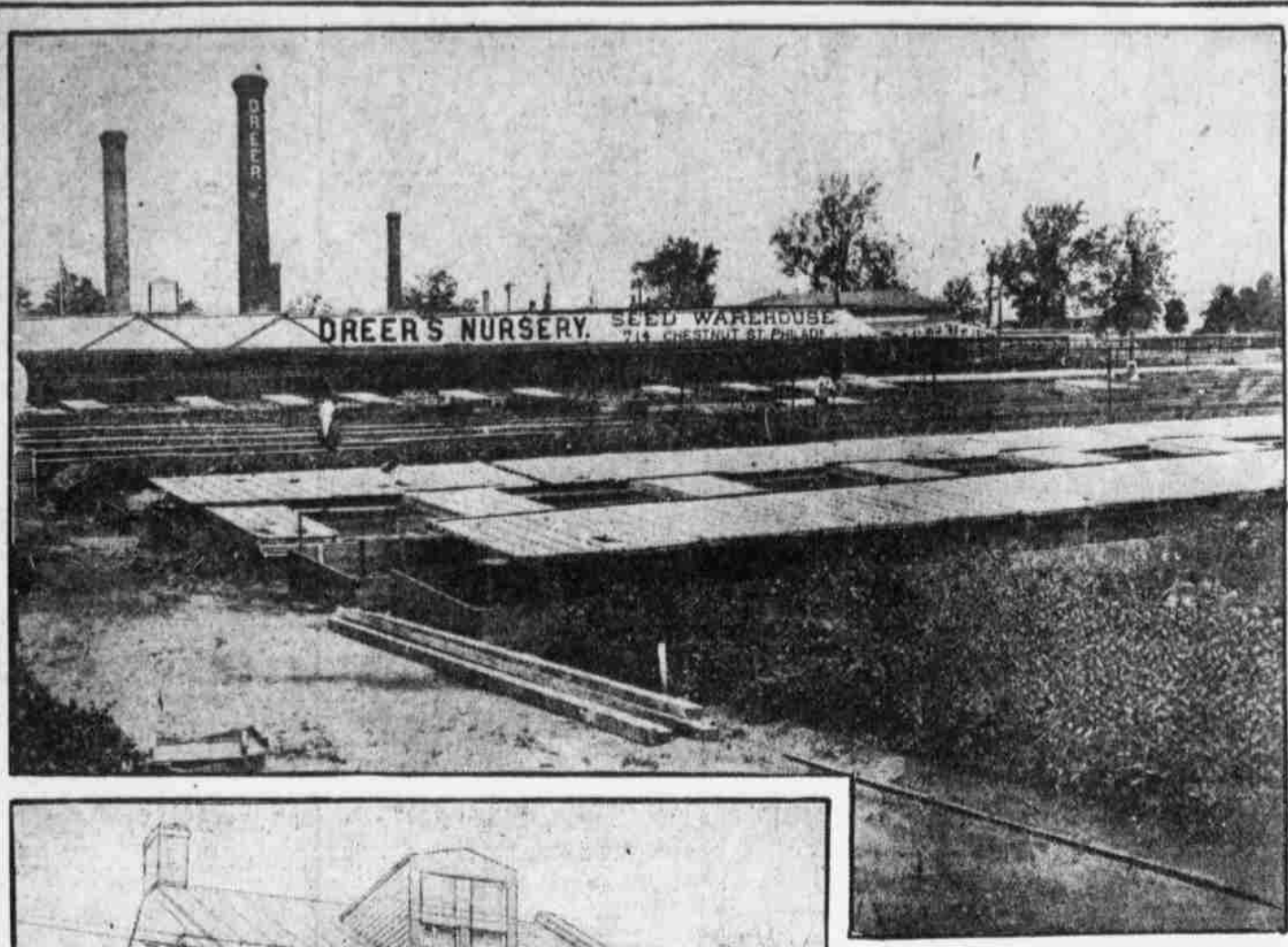
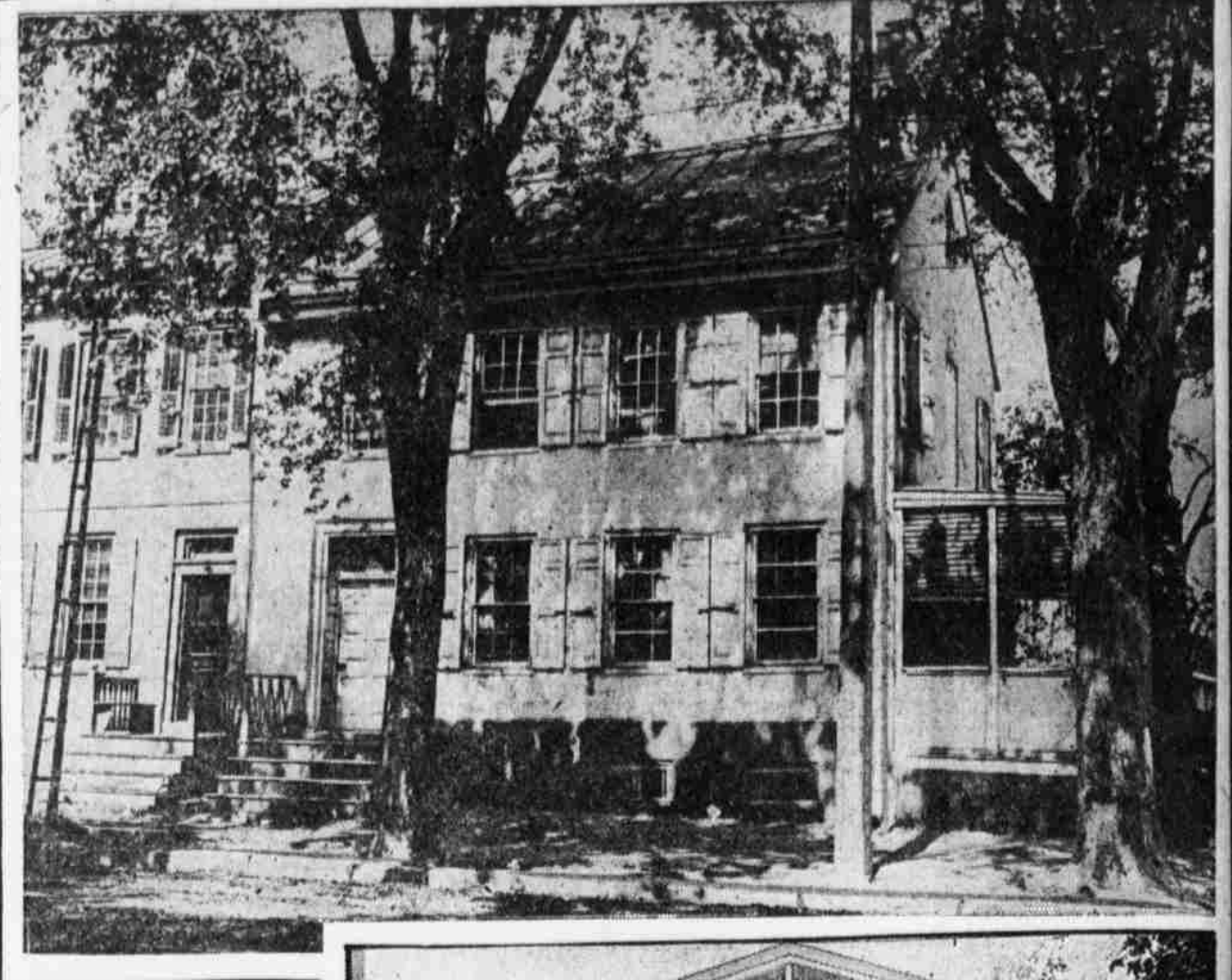


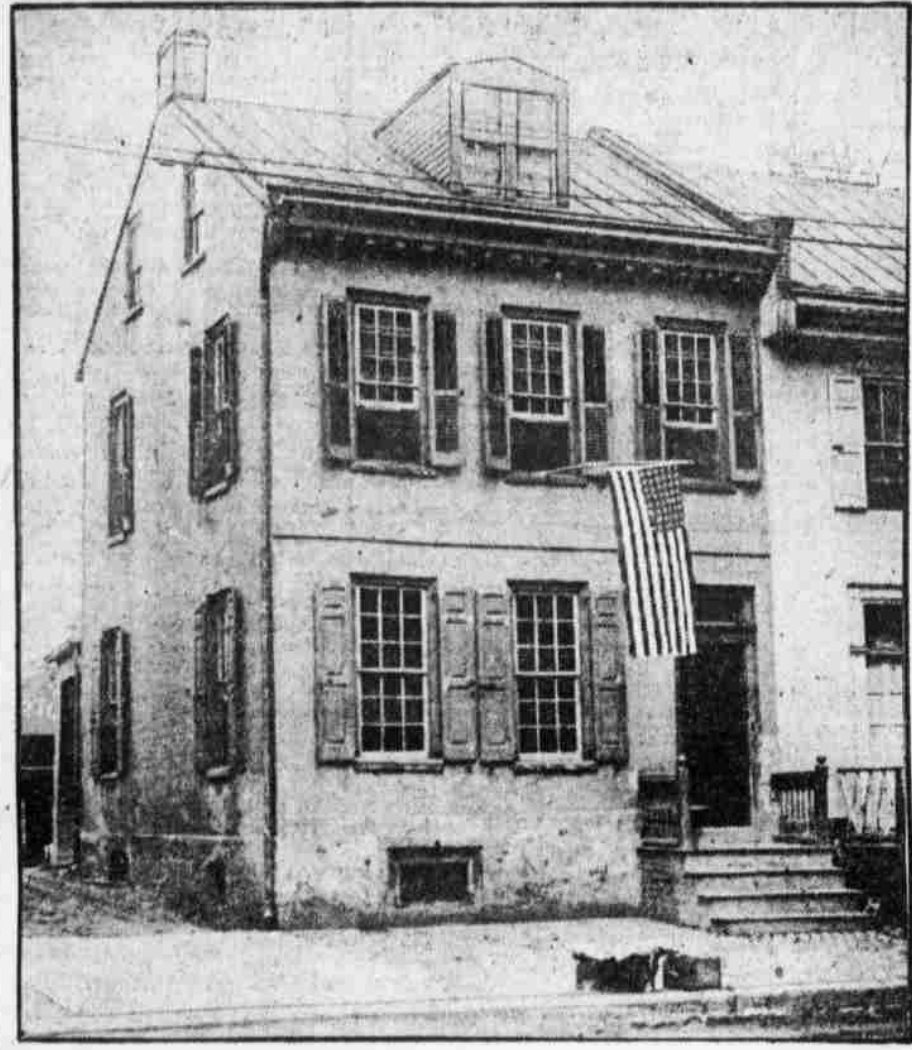
A CAMERA JOURNEY UP THE DELAWARE TO BURLINGTON AND NEIGHBORING TOWNS



THE DREER NURSERIES THAT SUPPLY A LARGE PHILADELPHIA TRADE



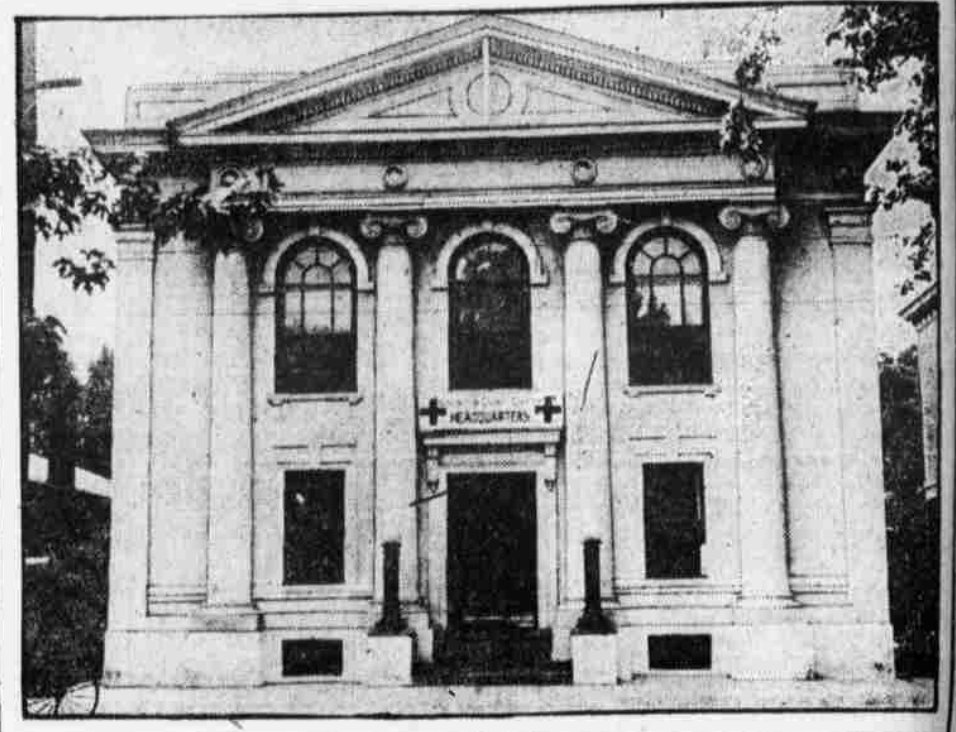
Captain James Lawrence, of "Don't Give Up the Ship" fame, once lived in this house in Burlington.



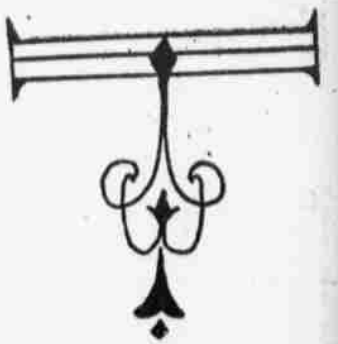
THE HOME OF JAMES FENIMORE COOPER
This structure is one of Burlington's many revered landmarks.



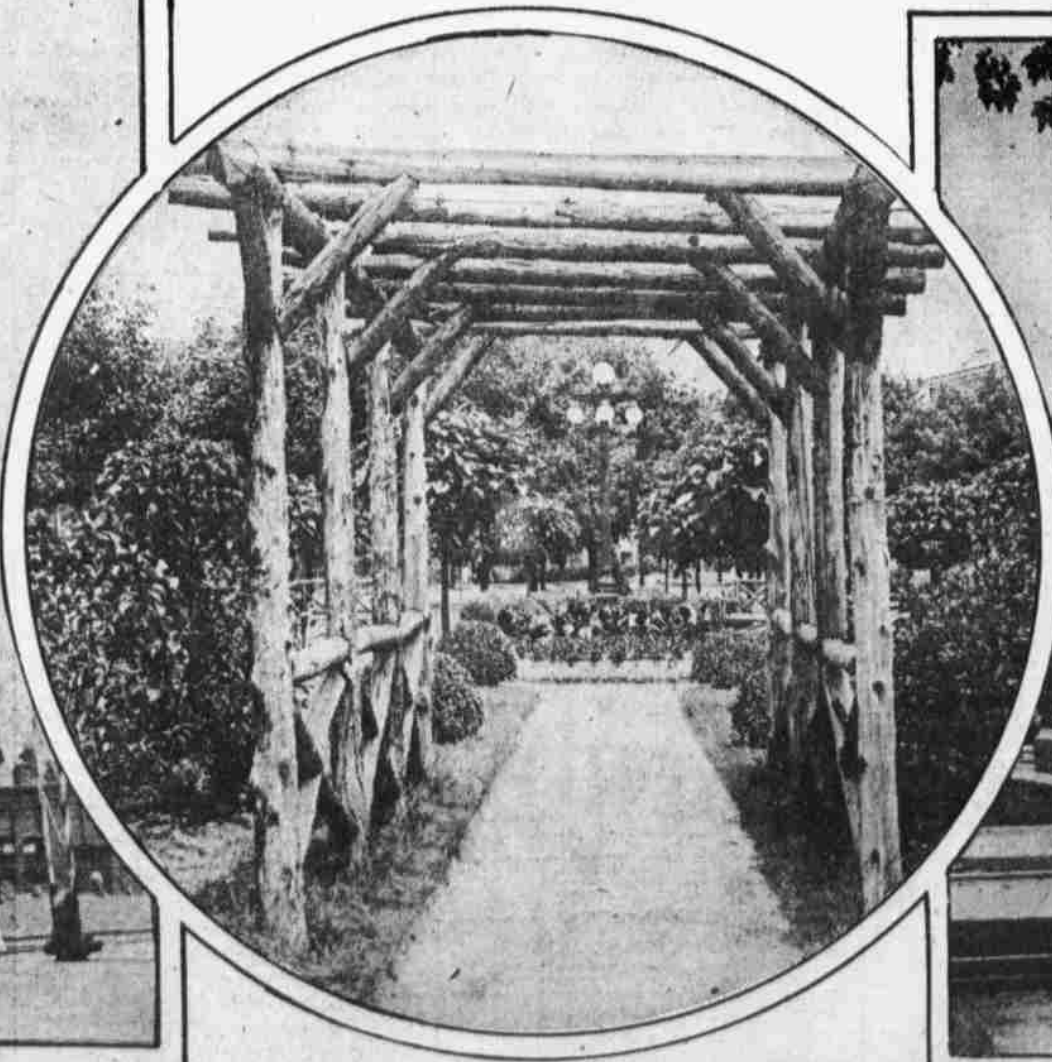
TO THE RIGHT, THE OUTLOOK AT BROAD AND MAIN STREETS, BURLINGTON.



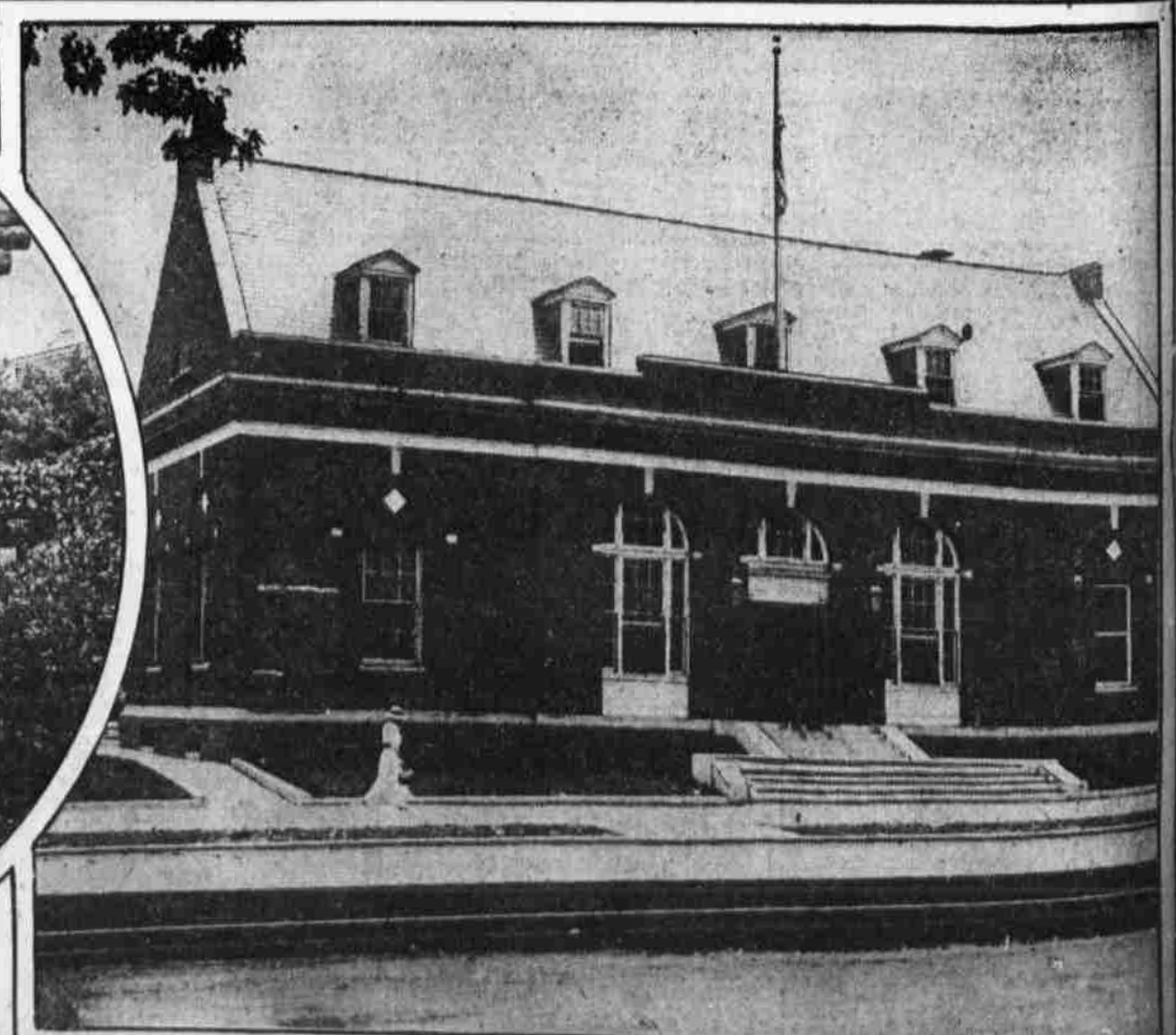
BURLINGTON'S CITY HALL
It is situated on High street in the heart of the New Jersey city.



FACTORY OF THE KEYSTONE WATCH CASE COMPANY AT RIVERSIDE



ENTRANCE TO THE MUNICIPAL PARK AT PALMYRA



BURLINGTON CITIZENS ARE PROUD OF THEIR NEW POSTOFFICE ON BROAD STREET