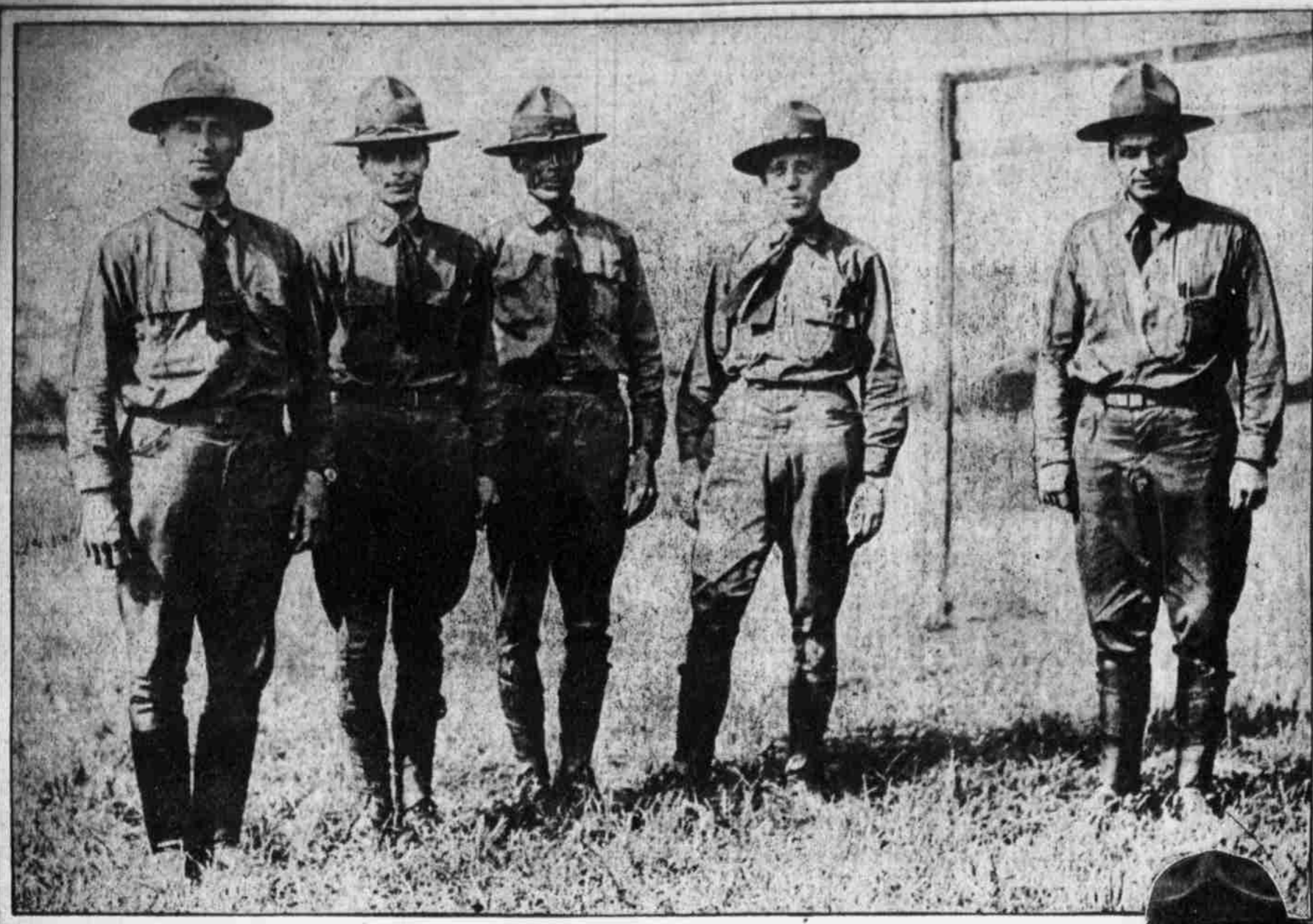
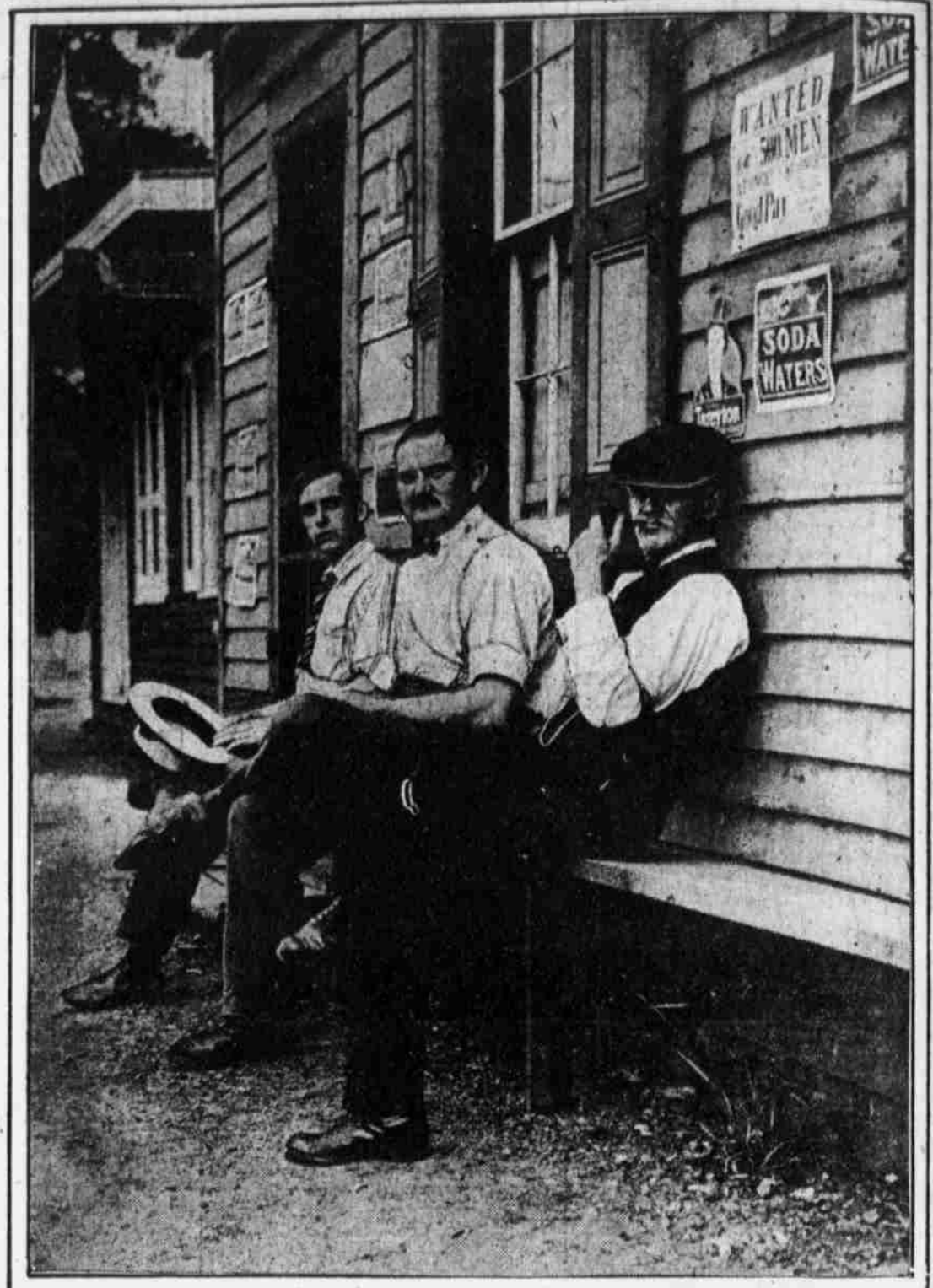


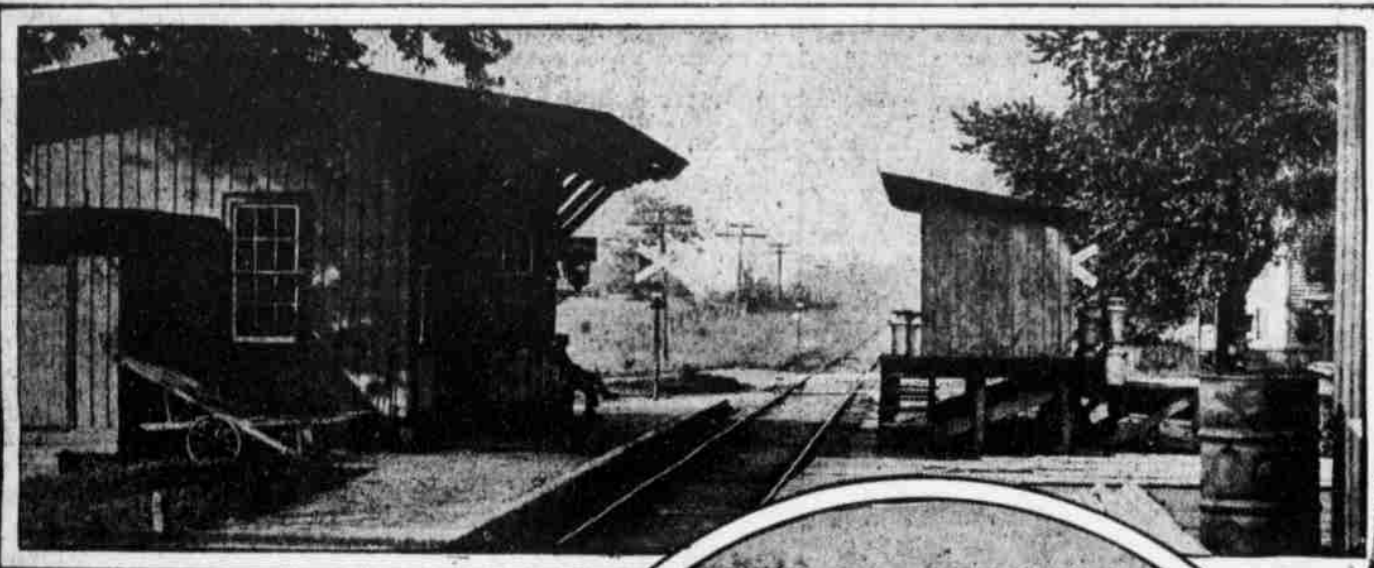
FORTUNES OF WAR THROW SPOTLIGHT ON WRIGHTSTOWN, SITE FOR GREAT TRAINING CAMP



OFFICERS OF THE FIRST BATTALION, NEW JERSEY ENGINEERS' CORPS, WHO ARE PLOTTING THE ENCAMPMENT. LEFT TO RIGHT, MAJOR F. A. REIMER, CAPTAIN C. M. HUSTED, CAPTAIN H. B. KEASBY, CAPTAIN G. W. MULHERON, CAPTAIN C. S. WOOLSON



A TYPICAL SUMMER SCENE IN THE PEACEFUL JERSEY TOWN Howard Johnson, town barber, in the center, is enjoying a dream over the pleasing prospect of having 36,000 men to shave twice a week. At his right is Shreve Nelson, a native. Clayton Sterling, another native, is on the left.



THE WRIGHTSTOWN STATION, A TYPICAL "JERKWATER" DEPOT NOW, SOON WILL RIVAL THE GREAT TERMINALS OF THE CITIES IN ITS WARTIME PROSPERITY



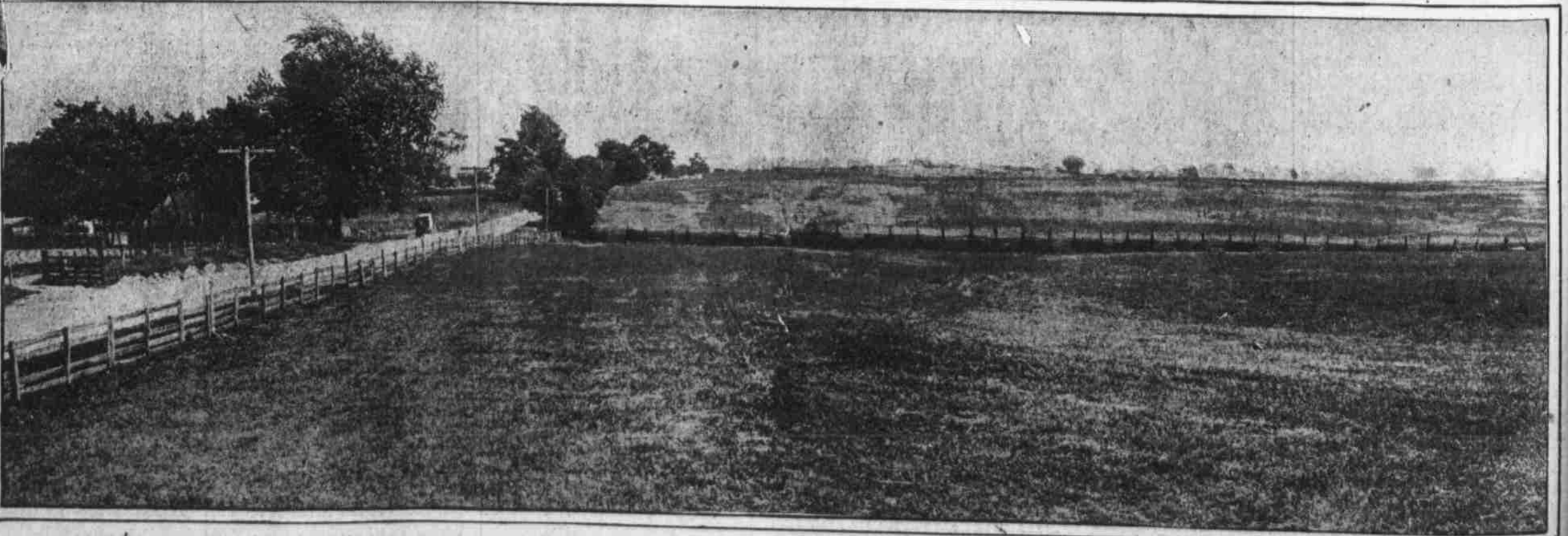
LEFT, THE TINY COLONY HOUSING THE ADVANCE GUARD OF ENGINEERS. ABOVE, MAJOR H. C. WILLIAMS, U. S. A., IN CHARGE OF PREPARATIONS FOR THE ENCAMPMENT



TO BE OR NOT TO BE IS THE PROBLEM OF THIS, THE TOWN'S LONE SALOON, NOW THAT GROCERIES ARE FORBIDDEN WITHIN TWO MILES OF AN ARMY CAMP. STILL, THE BARKEEP HAS HOPES



JOHN A. SMITH Now a fourth-class postmaster, he expects to become a first-class official when the town becomes a city.



GENERAL VIEW OF THE LEVEL FARMLAND WHICH WILL BE CONVERTED INTO A VAST CITY OF BARRACKS FOR THE 36,000 DRAFTED MEN WHO WILL MOBILIZE AT WRIGHTSTOWN The camp will be three miles long and two miles wide and will occupy twenty farms which have been leased for the purpose by the United States Government. Fully 4000 acres will be covered by tents, company streets and drill grounds.