



UPPER DARBY POLICE ARE "ON THE JOB" WHEN RIOT CALL SOUNDS When trouble developed at a building operation near the Sixty-ninth street terminal the police patrol arrived simultaneously with the EVENING LEDGER Photo Patrol. And that is going some.

The Young Lady Across the Way



The young lady across the way says her father has been diversifying all his investments into Government bonds.

Self-Evident

A country man on a visit to a city happened to see a sign. "Cast Iron Sinks." He looked at it a moment and then said, "Any darn fool knows that."—Nebraska Awgwan.

Two of a Kind

Mrs. Blue—Mah husband ain't been arrested in twenty-five years. Mrs. Green—Mine's up fo' life, too. —Awgwan.

KATRINKA'S ENORMOUS STRENGTH AND WILLIE'S SMALL FINGERS MAKE AN EFFECTIVE COMBINATION IN HOOKING UP "THE GAY AUNT EMMA"



—By FONTAINE FOX.

THE PADDED CELL



Bad Luck

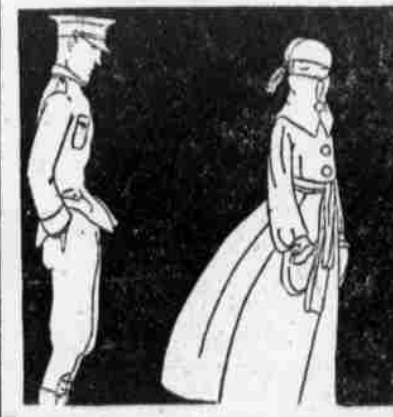
Jack Tumble was an acrobat. A good one, too, 'tis said; He'd take his foot, while lying flat, And gently scratch his head. But one bad day he broke his leg; Such luck! It can't be beat! The times are very hard for Jack. He can't make both ends meet. —Yonkers Statesman.

Time at Last



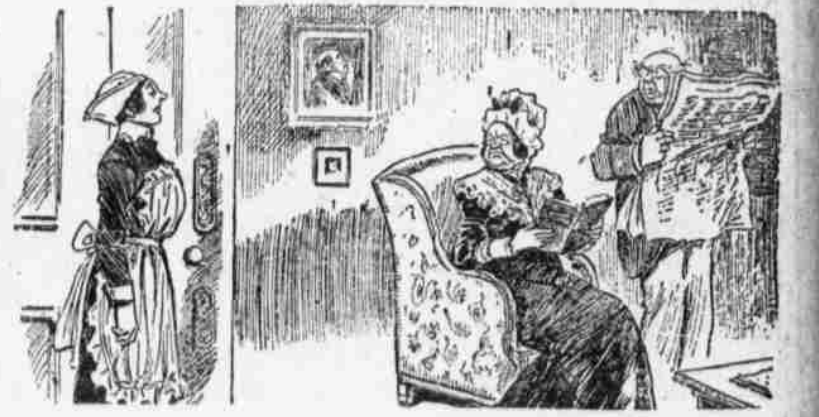
—Cornell Widow. "I wonder what Mary will do now, that Jack has gone to camp?" "Get acquainted with her father and mother, I guess."

Not Exclusive Enough



—Cornell Widow. Winston—So you don't like my uniform? Winifred—No, I don't—it's so common.

PATRIOTIC DELAY



—Passing Show. Mistress—Mary, how was it you didn't answer my bell? I rang quite five minutes ago? Maid—If you please, mum, I was in the middle of calculating how much my capital of \$178.75 invested in the Liberty Loan would amount to in ten years.

SCHOOL DAYS



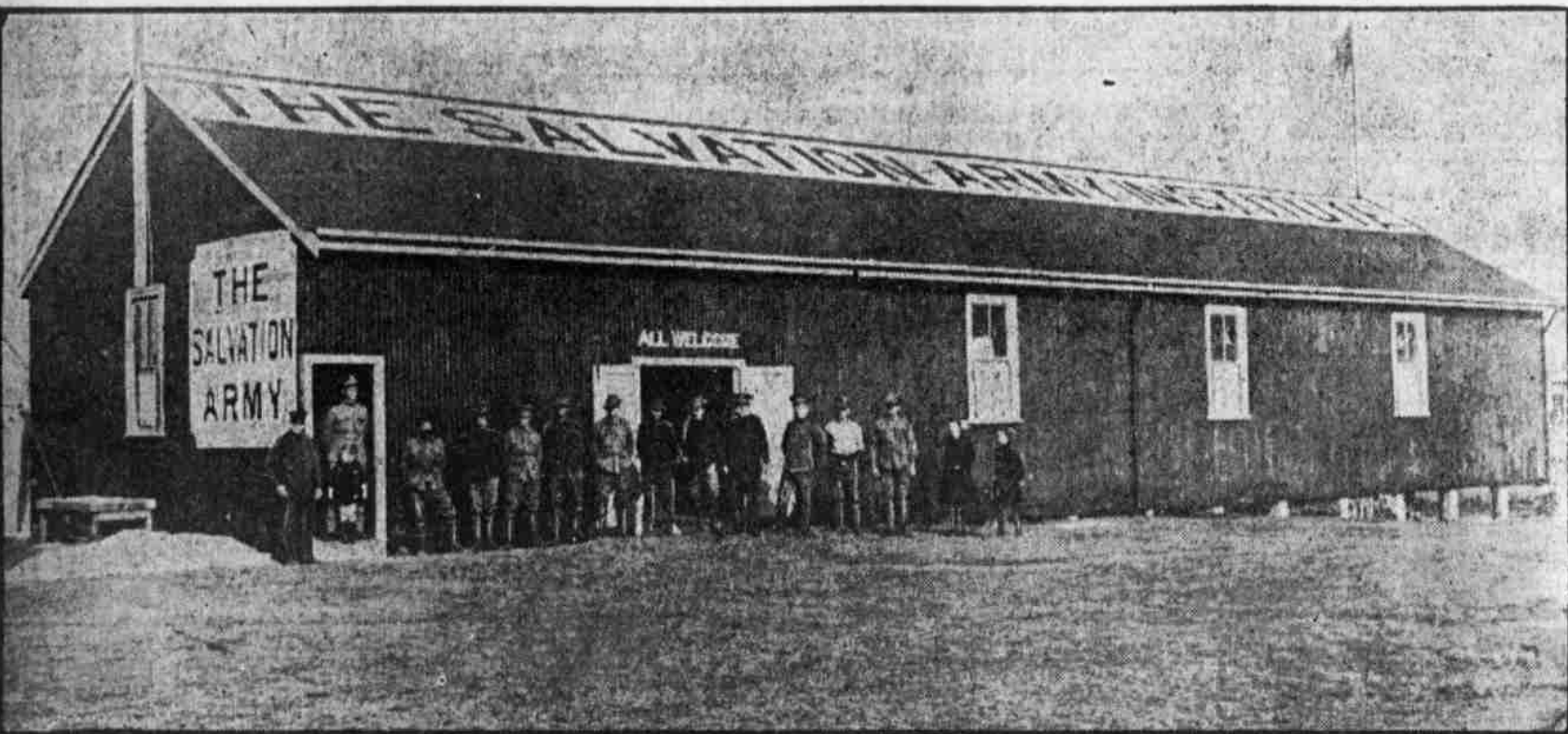
A Definition

"What is a monologue?" "It's a sort of conversation you get when you call on a professor."—Yale Record.

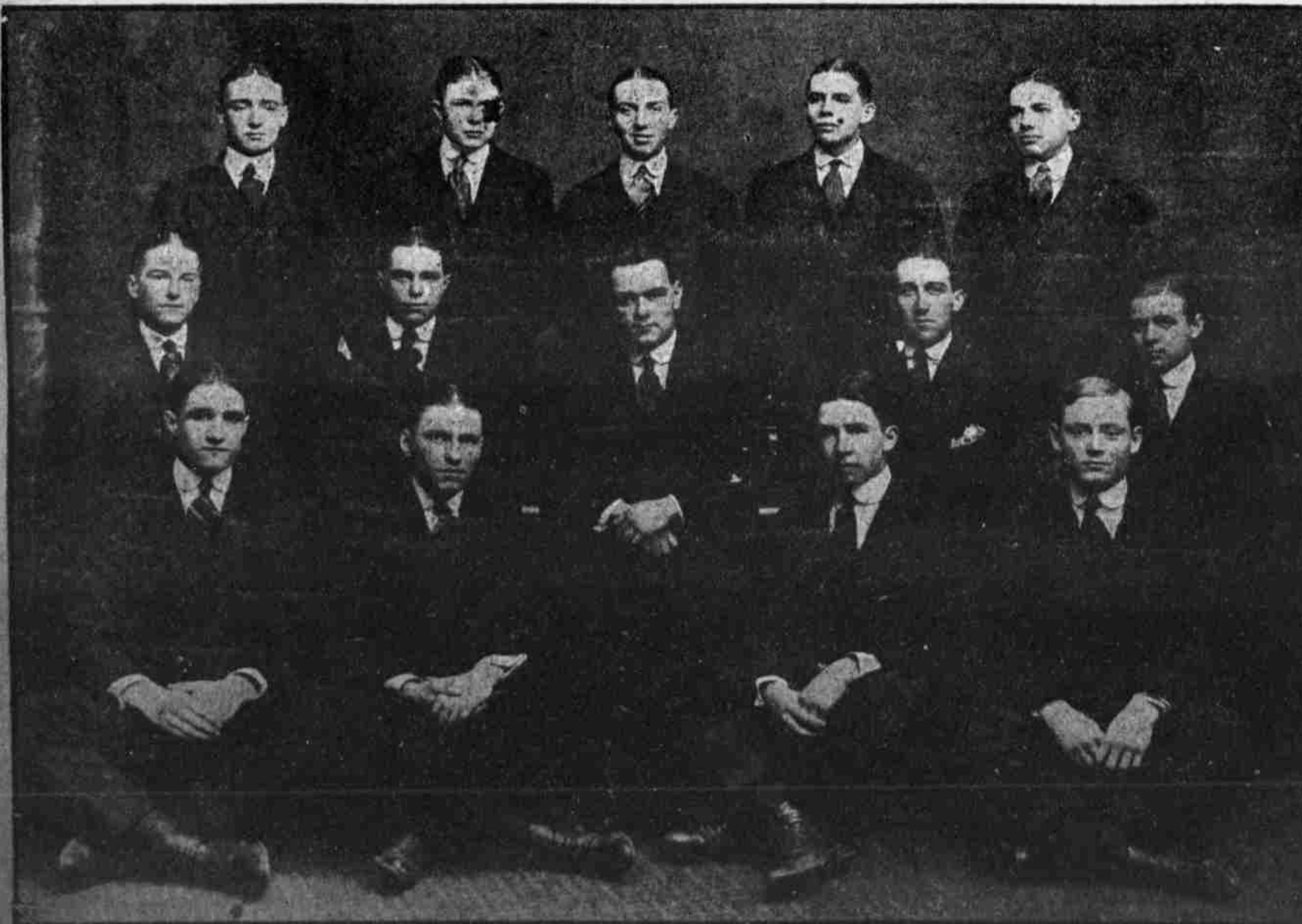
Well Served



—Tatter.



SALVATION ARMY STATION FOR MEN IN THE FIELD Copyright, American Press Association. These portable clubhouses, of which more than 100 already have been established on the European war fronts, are being duplicated in the mobilization and instruction camps in the United States. They provide coffee, checkers, writing materials and other acceptable comforts to the soldier boys.



NORTHEAST CHAPTER OF THE DUTCH COMPANY OF PHILADELPHIA HIGH SCHOOLS The group shows, top row, left to right: William Carter, C. Singleton Mears, Edward Wozley, Albert Whitaker, Russell White. Middle row: George Ringler, Thompson Jones, Andrew Whitaker, Lyons Thorpe, John Gimmel. Bottom row: Arthur Burns, Arthur Drew, George Katsenbach and Richard Kinsman.