

DRAMA MASQUE WILL HAVE PREMIERE TONIGHT

Elaborate Performance Ready for Presentation at U. of P. Final Rehearsal Held

The Masque of American Drama, the climax to Philadelphia's part in the general American drama year celebration, for which almost a thousand students of the University of Pennsylvania have been rehearsing for months, will have its premiere tonight in the Botanical Gardens. Performances will be given every night this week with a matinee on Saturday.

The last costume rehearsal of the entire cast was held this morning in the gardens, with Wassili Leps personally conducting the orchestra of sixty pieces, and Reginald De Koven, composer of the music, on hand to see that kinks were ironed out. The rehearsal revealed a fine blending of color in the costumes, which were designed by Leicester B. Holland and handled by Miss Marie Baer, while the cast itself executed the spectacle in a masterly way.

George F. Kearney, director of the Masque, was pleased over the outlook. "So, the Masque of the University is complete," he said. "We have worked for months on the Masque and it looks as though our efforts now are successful—if the weather is good."

De Koven's new national anthem, "Awake, America," will be presented for the first time at the opening performance tonight. Percy Mackaye, the poet, wrote the words and the gardens rang with the patriotic tune at the conclusion of the rehearsal this morning.

\$200,000 in Jewels Stolen

ELIZABETH, N. Y., May 14.—Jewels valued at \$200,000 were stolen from the country of Frederick H. Allen at Pelham Friday. It became known yesterday that the robbery occurred during the absence of the family. The jewels had been left out of the safe in which they were usually kept.

IN THE MOMENT'S MODES



An adorable creation in white organdie and Valenciennes lace is this kiddie's dress which trends slightly toward the Empire of old in its style. The huge hair bow and the cunningly rosetted sash girdle are of brilliant orange taffeta—an unusual and, therefore, entirely desirable note.

FILM FLASHES FOR FANS

Another big feature for the patrons of the Fifty-sixth Street Theatre every Wednesday and Thursday, beginning May 23 and 24, will be the weekly showing as an added attraction of one of the celebrated O. Henry stories. Untold millions have read these marvelous stories. The most beautiful, humorous, tender, pathetic and intensely ingenious stories of this great writer are now being produced in photoplay. It has arranged to present them all. A complete play each week. The first will be "The Third Ingredient."

The Ridge Avenue Theatre announces for Saturday, May 26, Sarah Bernhardt in "Mothers of France." This will be a first showing in this territory.

Some time ago Eustace Hale Hall wrote a novel. Later the Universal decided to purchase the moving-picture rights to it

and make it into a serial. Then they asked him to sit down and write a novelisation of the serial. He did this and enjoys the distinction of being the only author in captivity who had the pleasure of writing two versions of his own book. Any author who can muster enough courage to go through such an experience and come out unscathed has the profound respect of the entire author world.

In addition to writing "The Voice on the Wire" twice, Hall has written many of the "Nick Carter" stories which many a kid has been found reading on the sly in the woodshed—and received a good tanning from his father for it, too. He was also the first author to write a novel from a picture, when he wrote the story of "Traffic in Souls," which was one of the greatest successes the moving-picture industry has ever known.

This new serial will begin at the Fairmount on Wednesday.

Douglas Fairbanks, Carlisle Blackwell, Juna Elvidge and Norma Talmadge, four stars of the screen whose efforts to entertain are successful, will be the features of the bills at the Locust Theatre this week, and they will be seen in attractive photoplays that are presented for the first time in West Philadelphia. "Doug," whose popularity ever increases, will play today and Tuesday in one of his most popular comedies, "His Picture in the Paper."

The Belmont offers "The People vs. John Doe" as the big attraction today and Tuesday, and this remarkable picture is a wonderful preaching against capital punishment and the danger of conviction for murder on circumstantial evidence. Besides carrying a story of absorbing interest, it is well acted and splendidly photographed.

Beginning this week, and continuing for

fifteen weeks thereafter at the Music Theatre, will be a new serial story, the first episode of which will be shown on Friday as an added attraction to the chief feature. It is entitled "The Neglected Wife," in which that charming and vivacious actress, Ruth Roland, will have the stellar role. While this story will start on Friday, there will be features of unusual interest every other day during the week, and the principal attractions bring to patrons many stars in new plays, none of which have ever been seen in this part of the city before.

The program for the week at the Ruby offers a varied assortment of attractive plays and calls for the appearance of several of the most popular stars of the screen. Today June Caprice will appear in her latest success, "The Small Town Girl," and on Thursday the first chapter of the thrilling new serial, "The Neglected Wife," featuring Ruth Roland, will be the added attraction. Friday, H. B. Walthall will be seen in the first showing of "The Saint's Adventure."

BONWIT TELLER & CO.

The Specialty Shop of Originations
CHESTNUT AT 13TH STREET

Blouses

A Special Event Planned for
Tomorrow (Tuesday)



Our Entire Blouse and Waist Stocks have been Repriced for this Sale

It is as important as the price reductions to know that these garments are the season's most favored models.

French handmade blouses expressly made for this shop and Bonwit Teller & Co. originations in white and colored handkerchief linen, ecru, batiste, muslin, dimity, voile, Georgette crepe, silk shirtings and crepe de chine. Featured is every unusual blouse made, including the new high neck styles.

500 Blouses of voile, crepe de chine, handkerchief linen, batiste and blazer stripe sports models **3.90**

350 Blouses of Georgette crepe, handkerchief linen, nets, batiste, and voile. High and low necks **5.50**

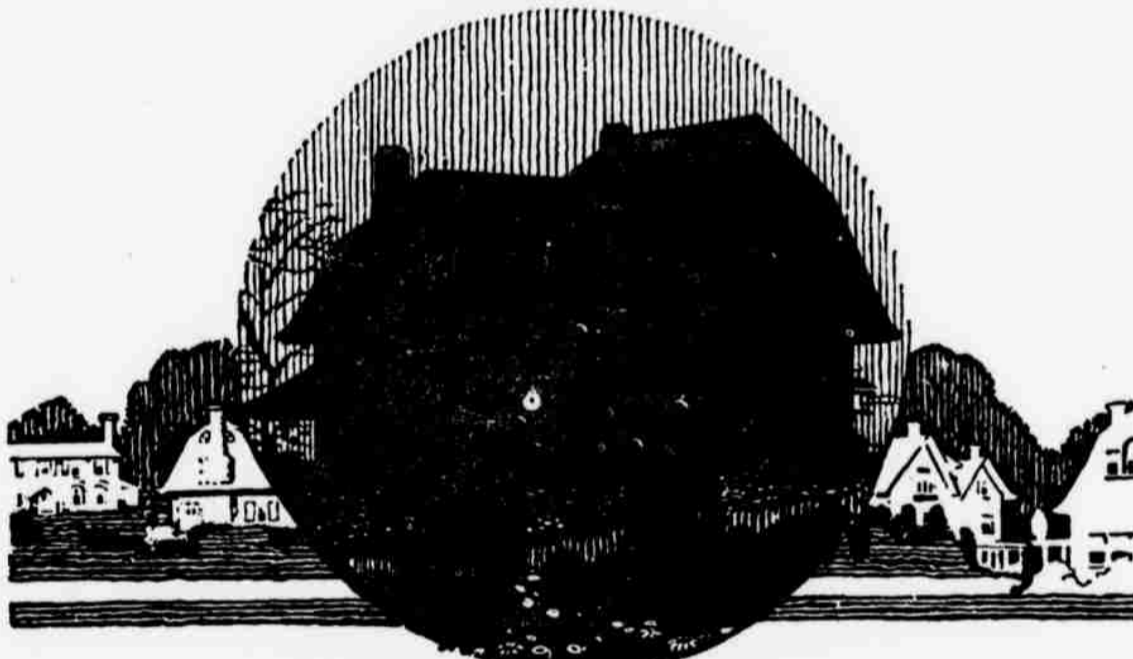
"Bontel" Sport Blouses of a particularly heavy quality Jap silk, with reverse collar and cuffs **8.50**

175 Georgette crepe, batiste, kerchief linen and French voile **10.00**

Imported and Domestic Model Waists

Collection of odd blouses and waists, taken from our regular stock and especially arranged for this sale.
Copies of imported models, developed in Georgette, lace trimmed, hand embroidered, and bead trimming.
A variety of models to select from, in flesh and white (broken sizes).

12.50
were 19.50
to 27.50



DO YOU LIVE IN A BLACK HOUSE?

In one out of every five homes, the plot of Pathe's new serial is being lived in real life right now. Were those houses of unhappiness painted black your street would have its share. Would your house be among them?

The theme is so broad, its ramifications are so far-reaching that everyone is interested in it. It remained for Mabel Herbert Umer, America's most widely read author, to put it into a story, so powerful, so absorbing, so sympathetic, that it needed the screen to adequately bring out its scope, its power.

PATHE places before your eyes the motion picture serial THE NEGLECTED WIFE

RUTH ROLAND

the charming, the talented, the popular favorite, plays in it the best part of her career—that of the other woman.

TODAY

leading theatres everywhere will show the first episode of this serial. Plan to win one of the tempting cash prizes which will go to those who furnish the best solution to life's leading problem.

Adapted from novels by Mabel Herbert Umer.

PRESENTED BY PATHE
Produced by Balboa

Life's greatest problem is that of the neglected wife, the spring husband, the other woman. What is the solution of this problem?
\$1000 will be yours if you give the best solution.
\$ 500 will be paid for the next best solution.
\$ 100 will be paid to each of the five persons who give the next best solutions.
Write us what you think is the best solution to the problem, using one side of the paper only and confining yourself to not more than 200 words. Your answer will not have to correspond to the ending in the picture and literary merit will not count. A committee of men and women of national standing will act as judges.
Your idea may win one of these prizes!
Address your solution: Contest Department, Pathe Exchange, 1235 Vine Street, Philadelphia, Pa.
No replies considered after August 12th, 1917.



J. A. Smit
Vice-President and General Manager
PATHE EXCHANGE, Incorporated.

American Stores Co.

QUAKER CORN FLAKES
6c pkg.

Pure Jelly glass 9c

The Price of Flour
is higher today than it has been since THE CIVIL WAR

Yet we are still selling those
Big Quality Loaves BREAD
6c

As long as our stock of flour lasts, we are glad, indeed, to be able to give our customers this and every other advantage within our power. Just another telling instance of our
PRODUCER TO CONSUMER PLAN
AMERICAN STORES CO.

NEW FLORIDA POTATOES
25c
1/4 Peck

Karo Syrup can 10c

High Grade Coffee lb 20c
This Coffee will please you—full, heavy body—delightful drink.

Fine Quality Tea lb 35c
Teas of unusual value blended to suit the most exacting housekeepers.

Lunch Biscuit lb 14c

Strictly Fresh Eggs doz 37c
Every egg carefully selected and guaranteed as represented.

Washing Soda lb 2c

Post Toasties pkg 8c

New Laid Eggs In Sealed Cartons doz 40c
Extra selected, big, full and meaty.

Bluing bot 4c

Fancy Rice lb 9c

Choice Quality Butter lb 45c
A superior quality of high-grade butter—equal to some Dealers' best.

Lenox Soap cake 4c

Evap. Milk can 11c

Our Best Butter lb 48c
Produced in the best Dairy District in the U. S. The finest quality Butter churned.

Old Dutch can 8c

Beans with pork can 14c

SLICED DRIED BEEF pkg 10c
Nice tender Beef, carefully trimmed and sliced very thin.

Insectine can 9c

Fancy PRUNES lb 12c 14c
Very choice California fruit—quality the same—only difference is size.

SALMON can 15c 18c 22c
Full size tall cans—very fine quality—priced according to its true value.