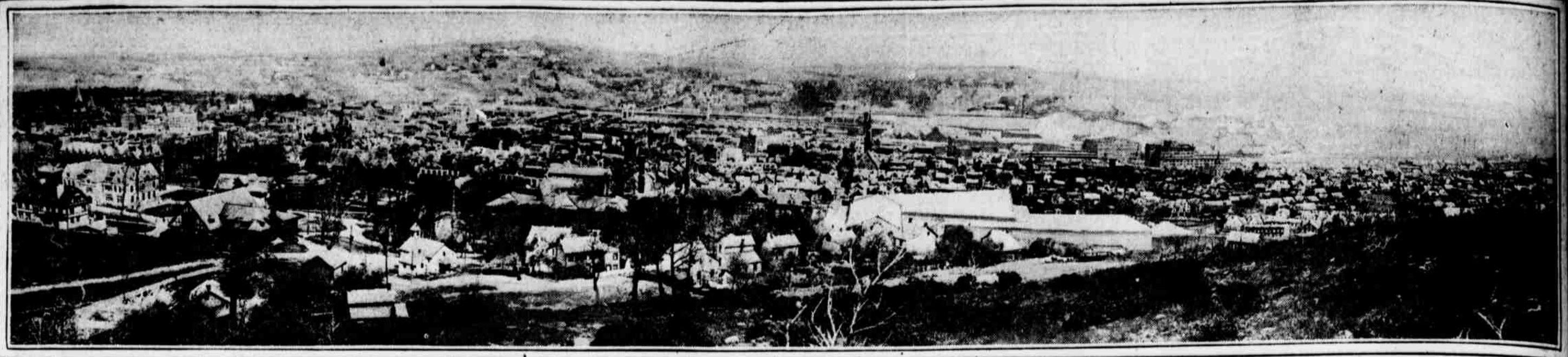
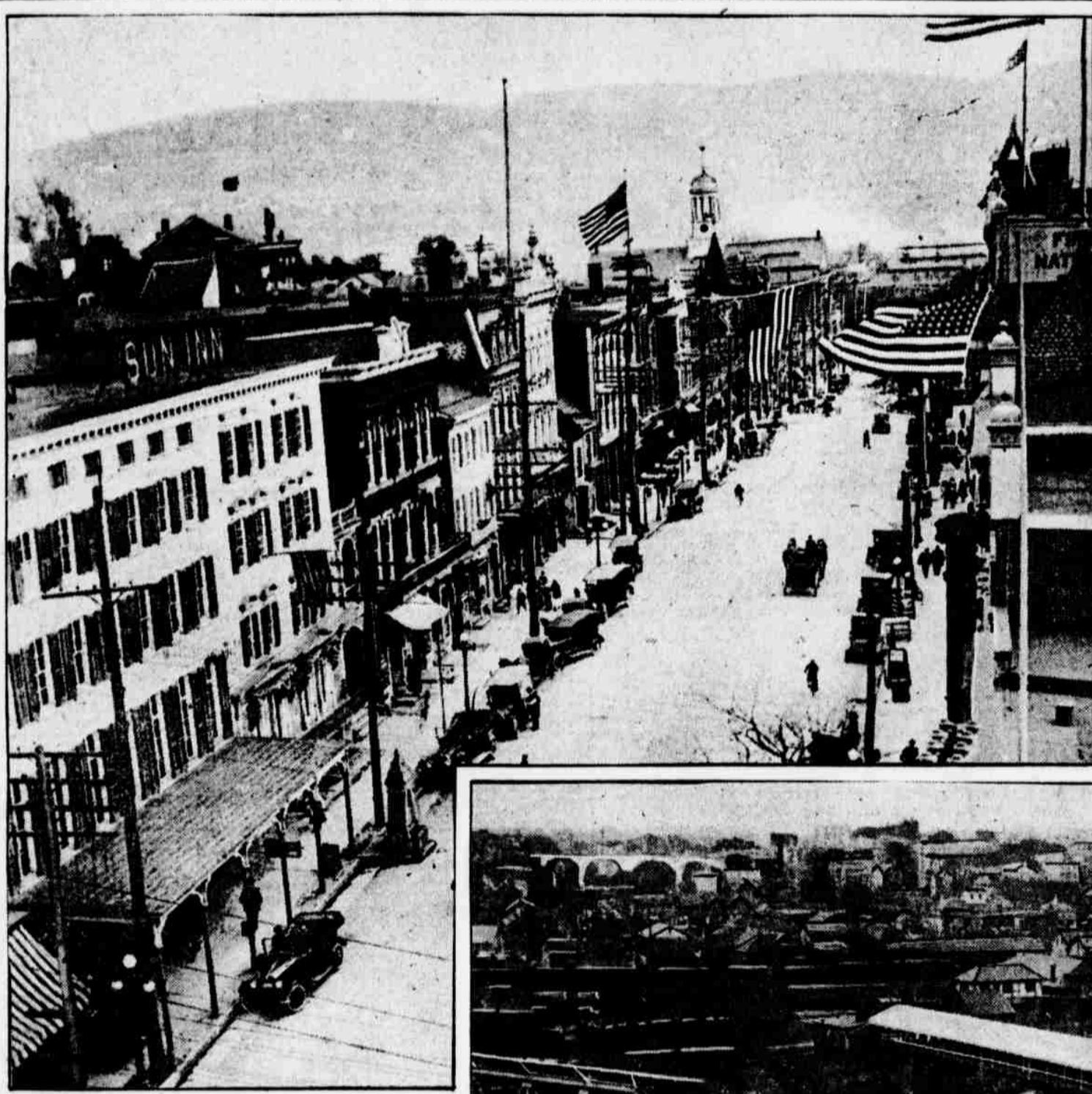


THE CAMERA DEPICTS THE BETHLEHEMS, TWIN PENNSYLVANIA TOWNS DAILY IN THE NEWS

Photographs by Evening Ledger Staff Photographers



GENERAL VIEW OF THE THRIVING SISTER CITIES THAT GREETS THE EYE FROM "THE LOOKOUT" IN SAYER'S PARK, ON THE CREST OF LEHIGH MOUNTAIN. In the foreground are the buildings of Lehigh University, situated well above the town of South Bethlehem. The university stadium can be discerned in the middle ground. Across the river the great volume of smoke betokens the mammoth Bethlehem Steel Works.



A HIGH-UP VIEW OF MAIN STREET, BETHLEHEM, LOOKING TOWARD SOUTH BETHLEHEM, ACROSS THE RIVER.

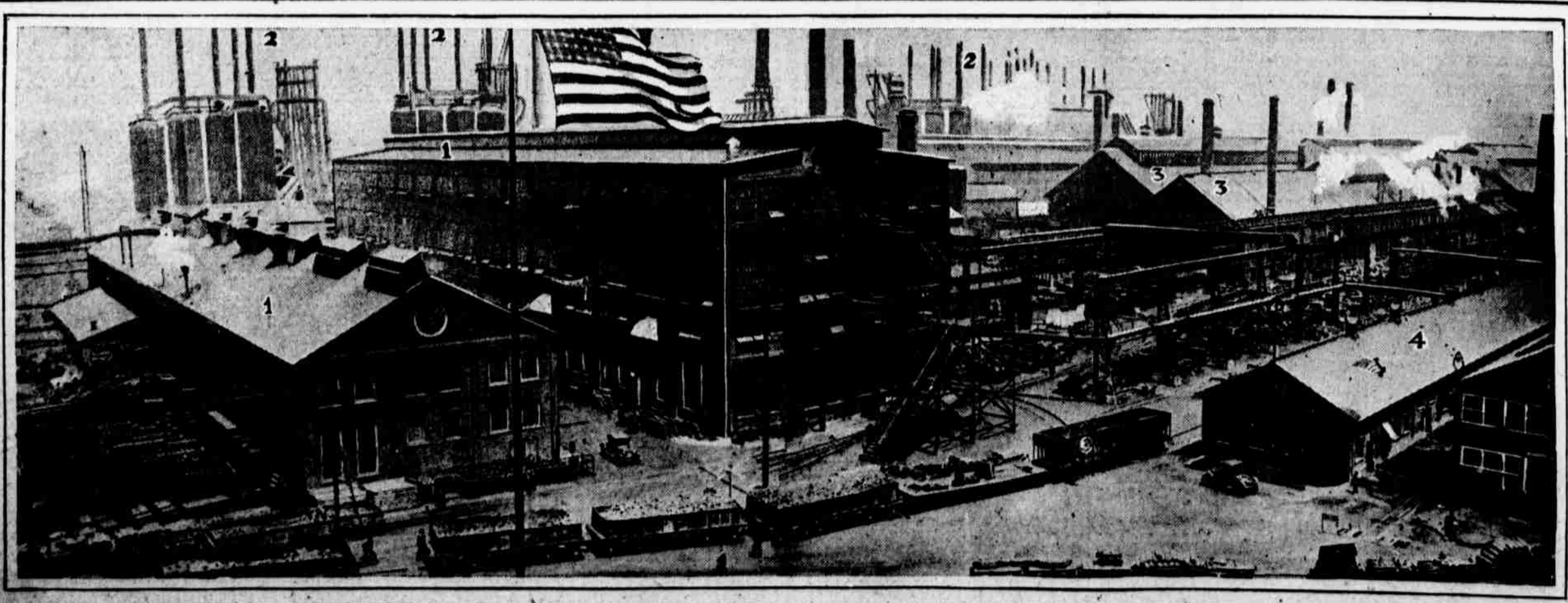


FAMILIAR SCENES AT THE ENTRANCE TO THE BETHLEHEM STEEL WORKS, WHERE 26,000 MEN FIND EMPLOYMENT

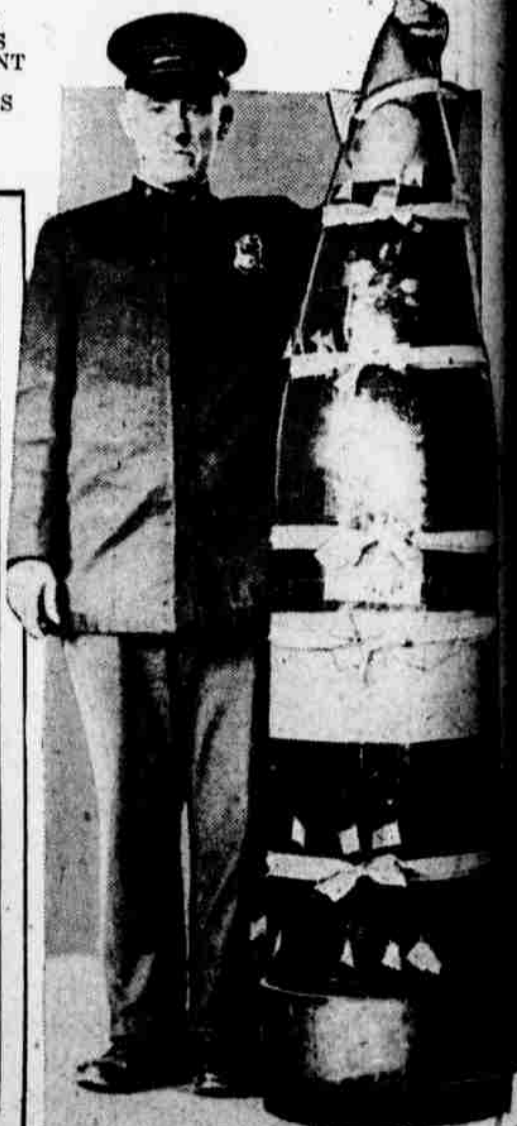


AT THE RIGHT, THE PROPOSED SITE FOR A MILLION-DOLLAR BRIDGE TO CONNECT THE BETHLEHEMS.

THE TAYLOR MONUMENT IS AN ADORNMENT OF WHICH BETHLEHEM IS PROUD.



STEELING PANORAMA OF THE MAMMOTH BETHLEHEM STEEL WORKS, WHERE 4800 CANNON ARE BEING MANUFACTURED FOR THE UNITED STATES. High officials of the Schwab Company gave the EVENING LEDGER photographer special permission to take this photograph. The numbers indicate: (1) machine shops, (2) blast furnaces, (3) open-hearth furnaces, (4) press forges.



A UNIQUE FLAG-RAISING. G. P. Roach, chief of the Bethlehem Steel police, beside a decorated sixteen-inch shell. The "shell" stands five feet high and weighs half a ton.