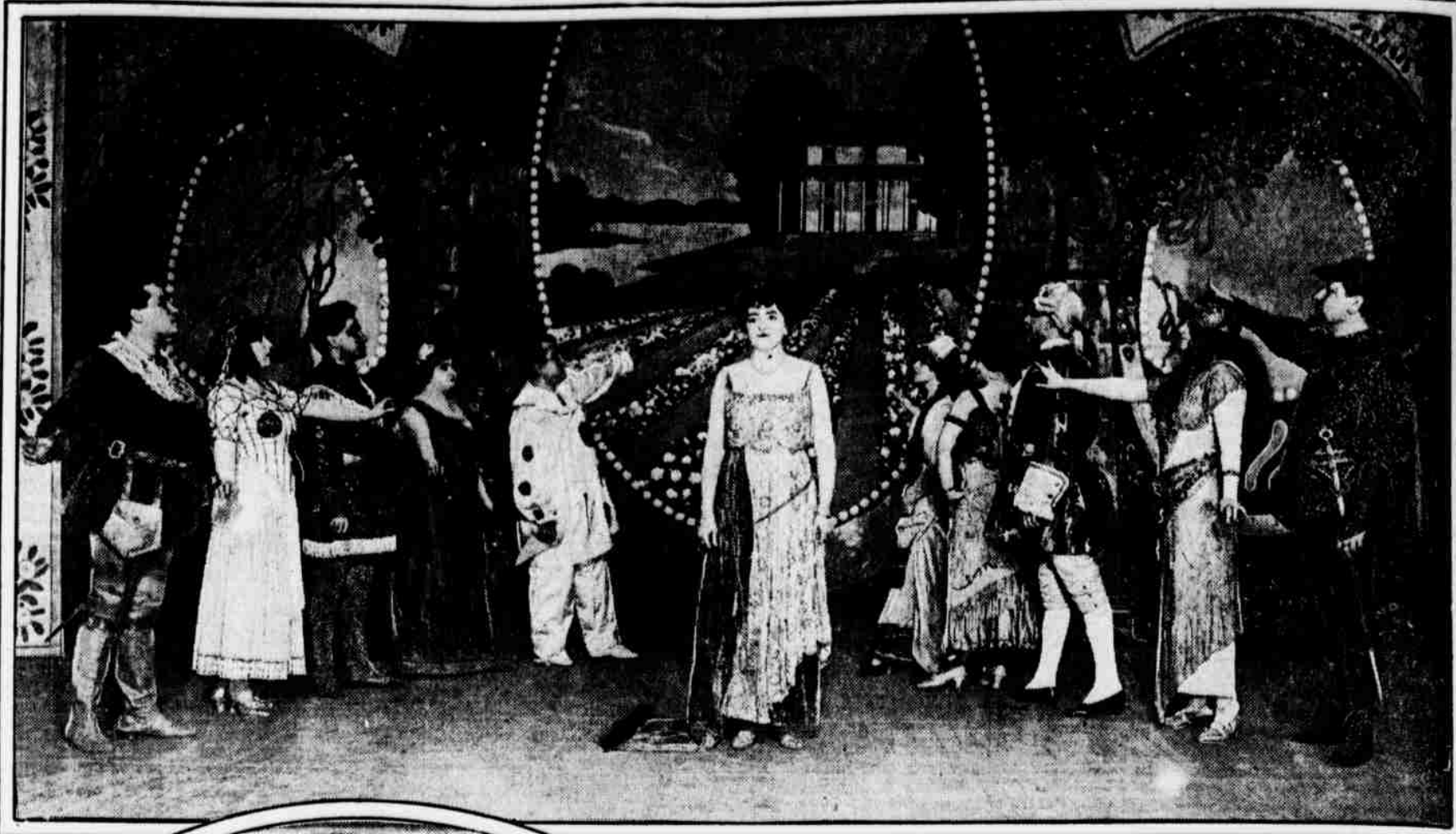


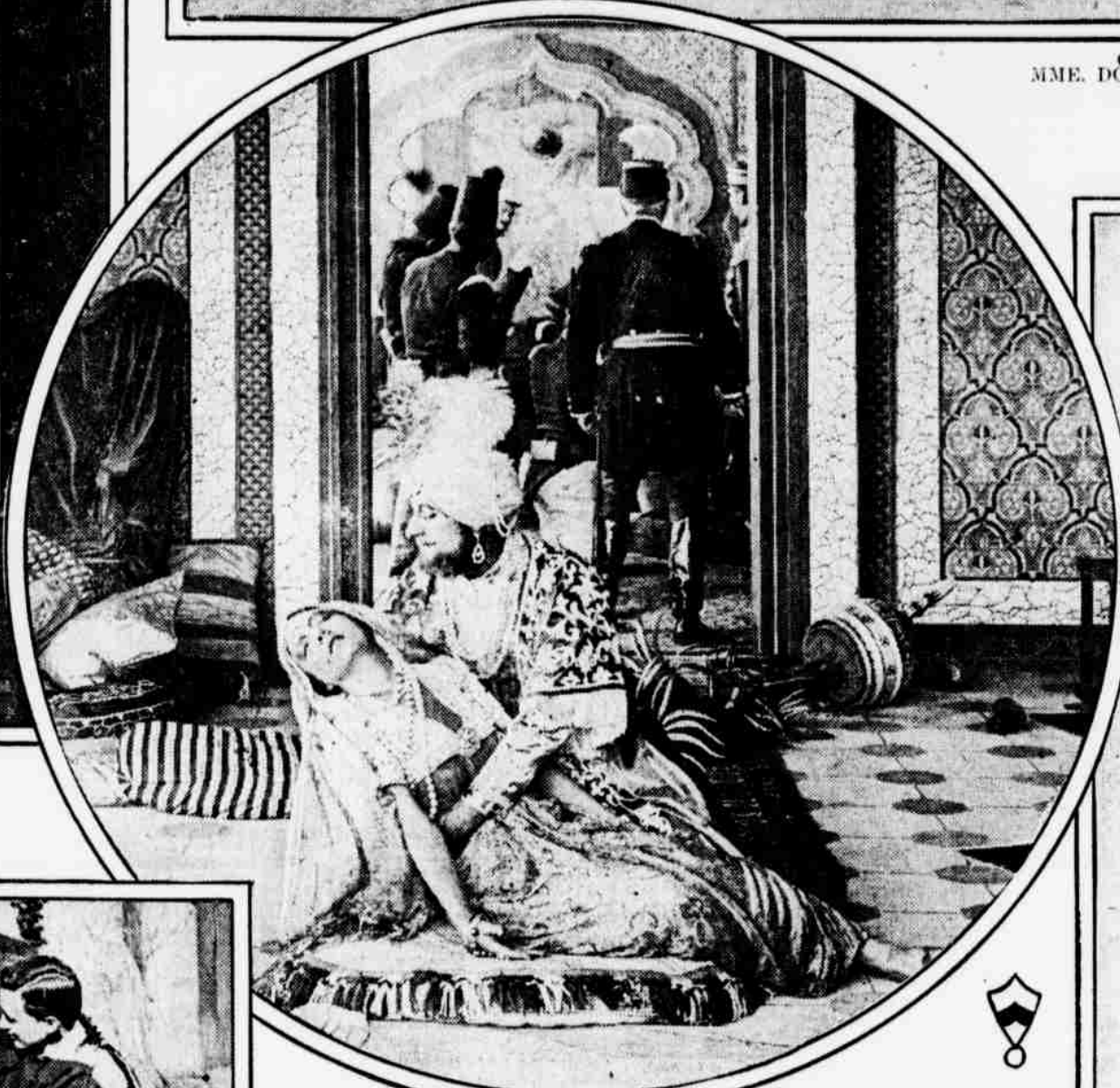
NOVELTIES SUFFICIENT TO WHET THE 'PLAYGOER'S APPETITE IN THEATRE MENU



"CEPTION SHOALS" BRINGS ALLA NAZIMOVA IN A NEW ROLE TO THE ADELPHI



MME. DOREE'S CELEBRITIES AT KEITH'S OFFER IMPRESSIONS OF WORLD-FAMOUS OPERATIC STARS



A SPECTACULAR SCENE FROM "TWENTY THOUSAND LEAGUES UNDER THE SEA," PICTURIZED AT THE FORREST



HARRISON AND PHILLIBER ARE AMONG THE BROADWAY'S ENTERTAINERS



A FOREGLIMPSE OF "THE MASQUE OF THE AMERICAN DRAMA" Left to right appear J. H. Schwartz, dwarf; C. E. Bell, "Rip"; G. M. Dickinson, "Old Rip," and M. Bendiner, dwarf.



"FRANCESCA DI RIMINI" AS "THE MASQUE" WILL SHOW IT A. E. Lauterbach (left) as "Paola" and Elizabeth Christian (right) as



MARIE WARREN, A PHILADELPHIA FAVORITE, AT THE KNICKERBOCKER



BILLY LANG WILL BE AMONG THE OSCULATORS IN "THE KISSING SCHOOL" AT THE GRAND



ETHEL MARTELL APPEARS AT THE WALNUT IN "HER UNBORN CHILD"