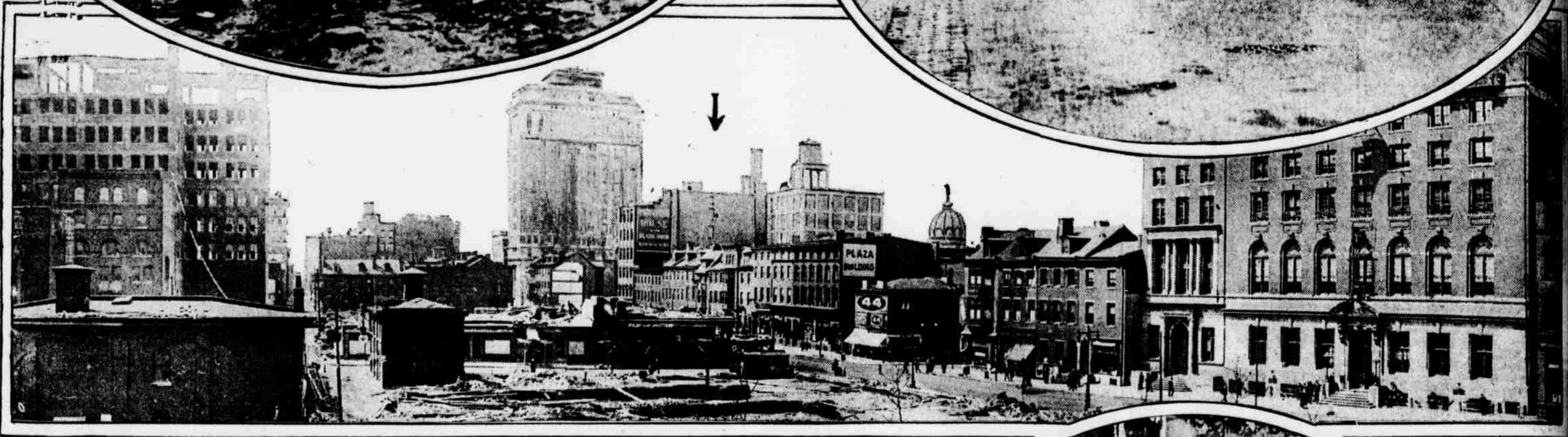
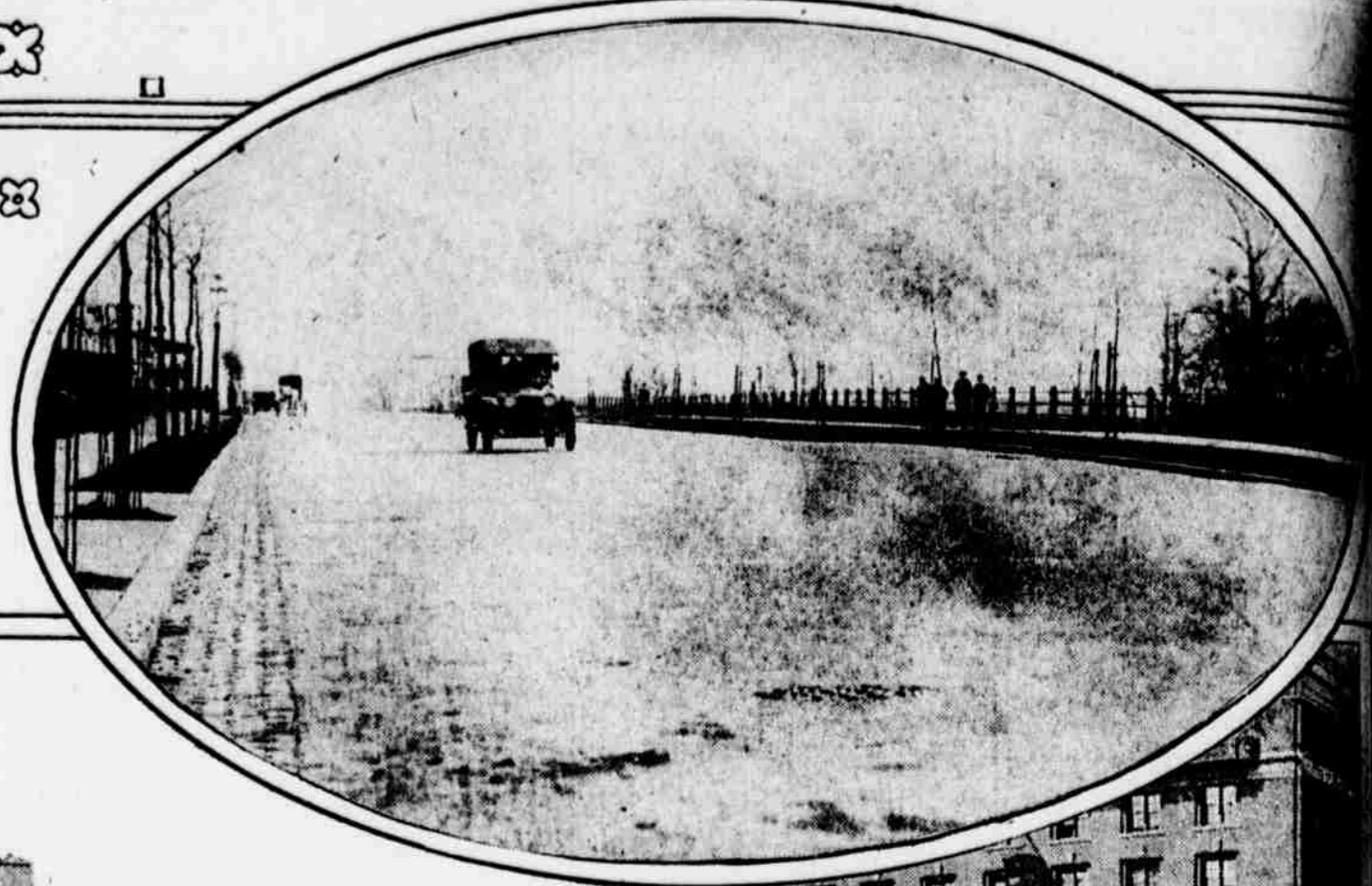
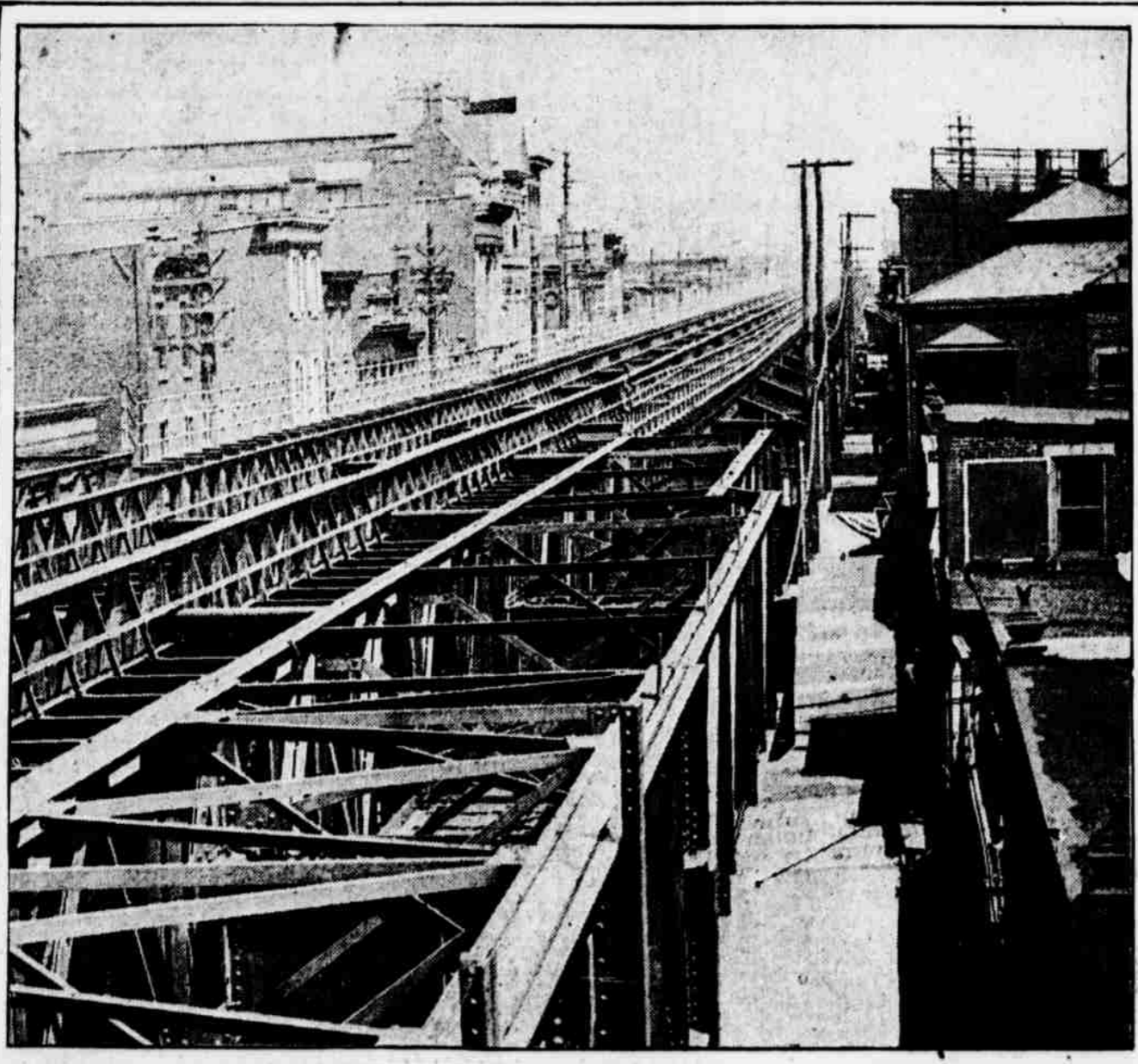


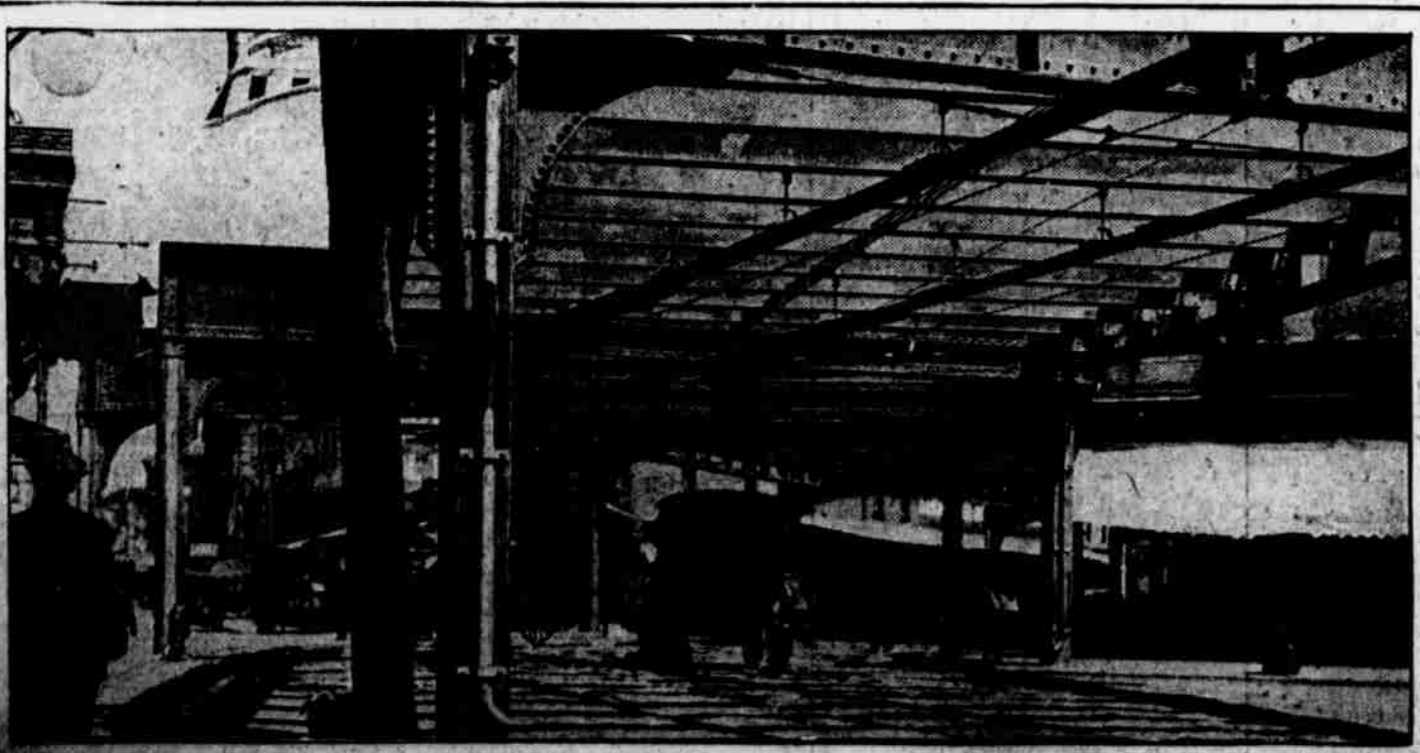
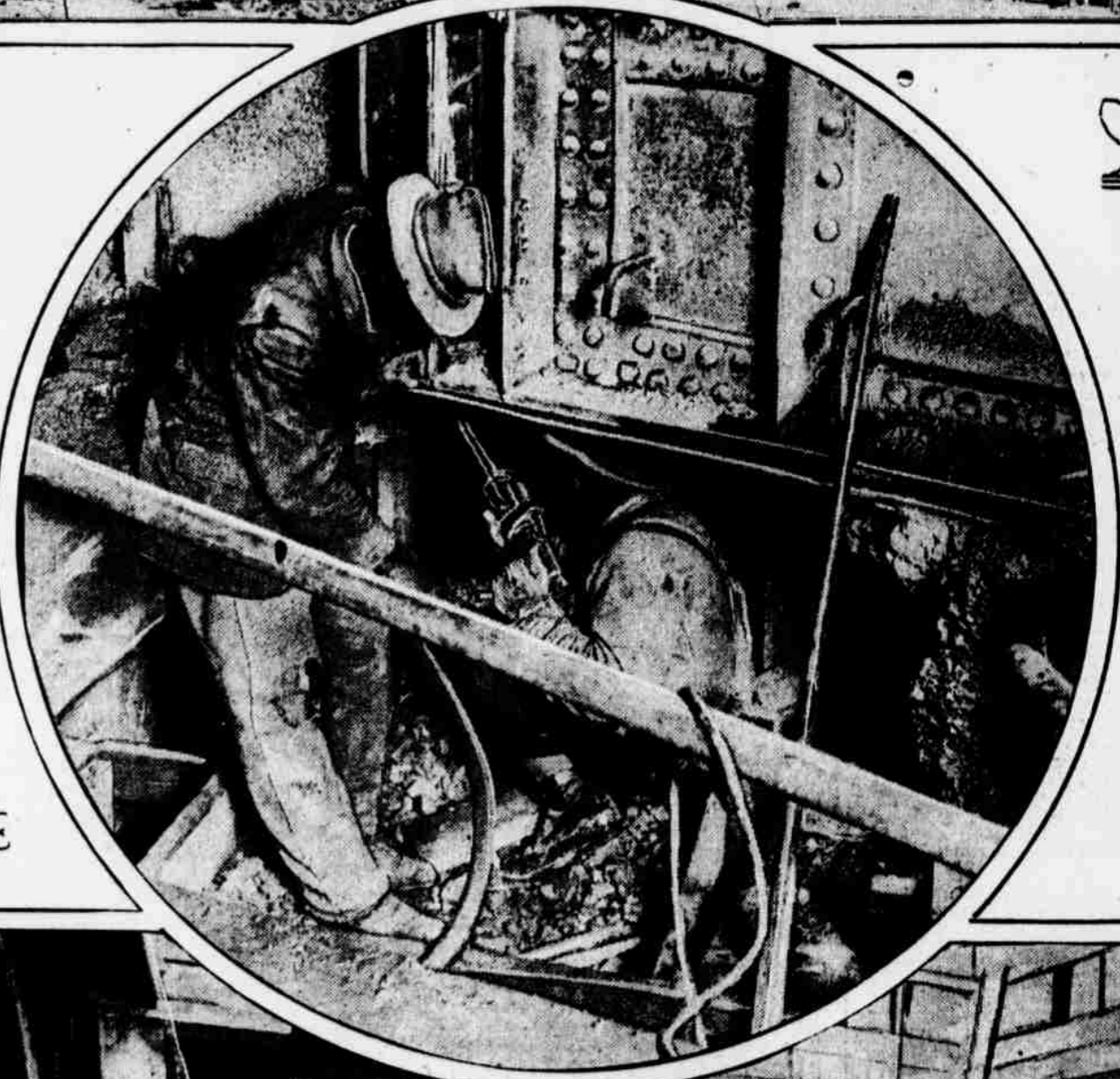
THOUGH THE WAR CLOUD HAS DESCENDED, PHILADELPHIA'S WORKS OF PEACE STILL GO ON



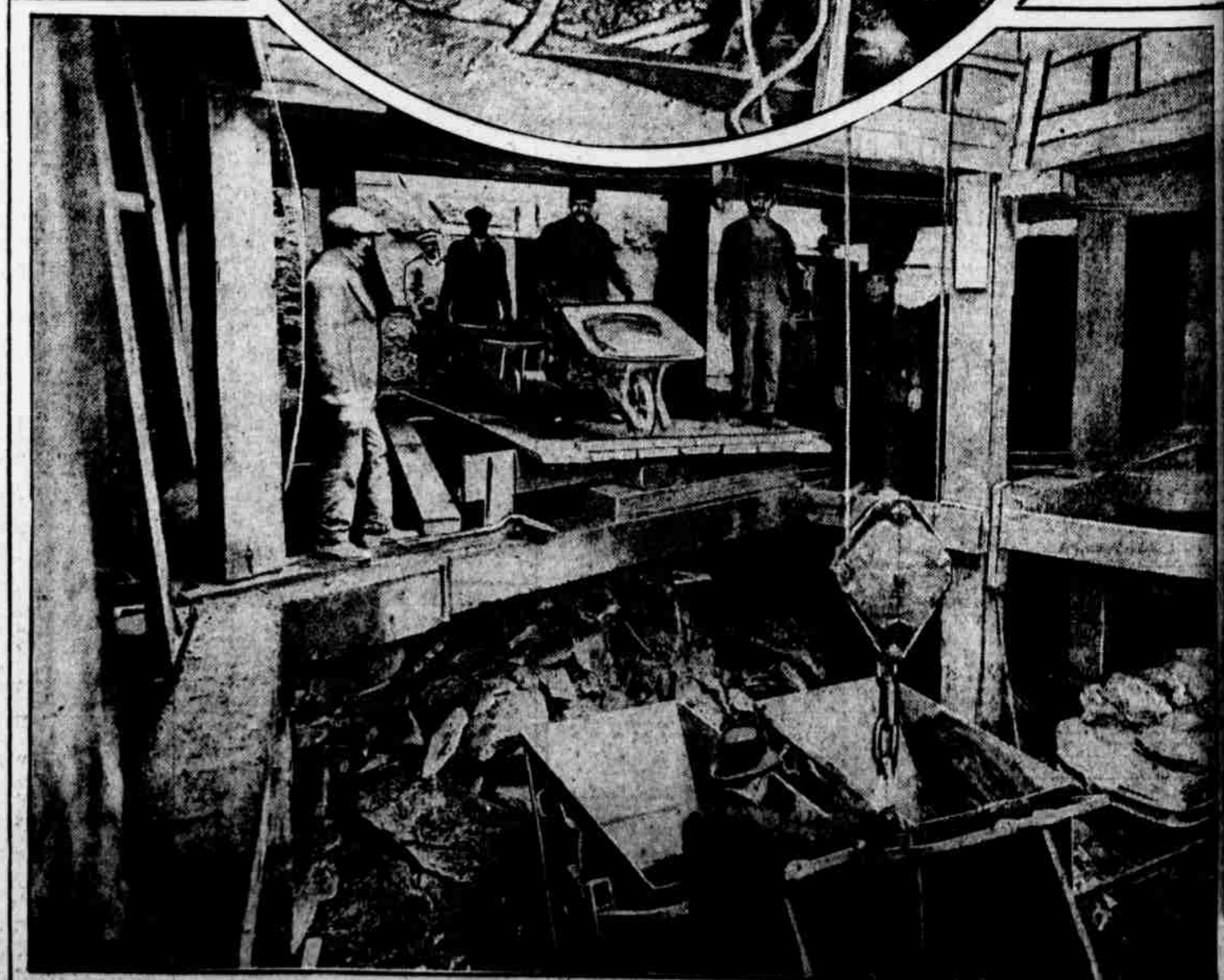
GENERAL VIEW FROM BROAD STREET OF THE WORK OF DESTRUCTION FOR THE PARKWAY. THE ARROW INDICATES WHERE THE BOULEVARD WILL BREAK THROUGH ON ITS WAY TO FAIRMOUNT PARK



AT THE TOP (LEFT) UNFINISHED SECTION OF COBB'S CREEK BOULEVARD FROM SPRUCE SOUTH TO CATHARINE STREET. AT THE RIGHT, LOOKING SOUTH FROM MARKET STREET, THE COMPLETED SECTION OF THE BOULEVARD



SLOWLY BUT SURELY THE "L" IS CREEPING ON TO FRANKFORD. Above, the completed structure as it appears along Front street at Berks. Below, where the elevated road turns from Front street into Lancaster avenue.



BURROWING FOR THE BROAD STREET SUBWAY FAR BENEATH CITY HALL. In the upper picture workmen are engaged in making the new tube under the ground. Below, the old tunnel.