

ALLENTOWN WORTHILY TYPIFIES THE PROGRESS OF THE LEHIGH VALLEY REGION



Photographs by Evening Ledger Staff Photographer
THE SOLDIERS AND SAILORS' MONUMENT OVERLOOKS HAMILTON STREET AT THE CENTER OF THE CITY'S BUSINESS DISTRICT



ALLENTOWN'S LATEST DONATION TO THE CAUSE OF EDUCATION—ITS MILLION-DOLLAR HIGH SCHOOL



THE EDWARD HARVEY MEMORIAL BUILDING, A NURSES' COLLEGE WITH ACCOMMODATIONS FOR 700 WOMEN

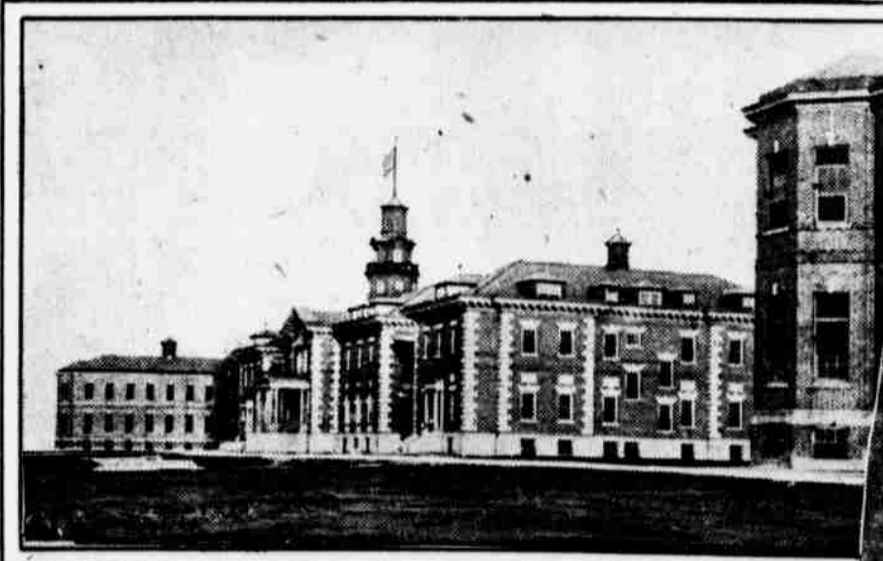
HIS HONOR, MAYOR A. L. REICHENBACH, ENJOYS THE TITLE OF "PRINCE OF ALLENTOWN" WITH TRUE DEMOCRATIC NONCHALANCE



COLONEL HARRY C. TREXLER, QUARTERMASTER GENERAL OF THE NATIONAL GUARD IN A TYPICAL



THE PORTION OF HAMILTON STREET REMOTE FROM THE BUSINESS DISTRICT CONTAINS THE HOMES OF LEADING ALLENTOWN FAMILIES



THE STATE INSANE ASYLUM CARES FOR 1300 INMATES IN A HOME OF ARCHITECTURAL DIGNITY



FROM SOUTH ALLENTOWN THE VISITOR MAY OBTAIN A GENERAL VIEW OF THE LEHIGH VALLEY METROPOLIS THAT LEAVES INDELIBLE IMPRESS OF INDUSTRY AND OF FUTURE GROWTH