

ORTHODOX FRIENDS DISCUSS WAR CRISIS

Philadelphia Yearly Meeting Being Marked by Interchange of Views

Views concerning the proper action to be taken by members of the Society of Friends in the event that the United States should go to war were discussed at the opening session of the Philadelphia Yearly Meeting of Orthodox Friends, which opened today at the meeting house, Fourth and Arch streets.

In an interview today Rufus M. Jones, professor of philosophy in Haverford College, said that Horace Mather Lippincott did not express the views of the society in a statement which he issued on Saturday concerning the approaching war.

This statement misrepresents the present position of the Society of Friends, said Professor Jones. It can only be taken as representing the views of the author, he asserted, and does not do justice to the facts as they are.

The meeting today again went on record as opposed to capital punishment. Report of the committee on legislation indicated strong backing for the bill now before the House of Representatives, providing for the abolition of the death penalty.

The opening session was followed by a public meeting at 2 o'clock this afternoon in the Twelfth Street Meeting House, where all the sessions except the peace meeting will be held.

Common Pleas Court No. 1 today granted the following divorces: Lizzie Easton from Sidney Easton.

Elkton Marriage Licenses ELKTON, Md., March 26.—The following marriage licenses were granted here today: Harry Egan and Lillian White, Leo Wilson and Esther Hughes, Charles E. Brown and Myrtle Lentz, Robert Archer and Anna Hill.

TODAY'S MARRIAGE LICENSES Albert H. Nantz, Narberth, Pa., and Anna W. Kernan, Narberth, Pa.

PENN ATHLETES TO FORM AVIATION CORPS FOR U. S.

"Ted" Meredith, "Don" Lippincott and Others Will Offer Services to Country

James E. Meredith, Donald Lippincott, "Nig" Koons and Wayne Vetterlein, athletes who brought fame to the Red and Blue while students at Pennsylvania, will join the aviation corps of the United States army.

"Ted" Meredith was the holder of the quarter and half mile running records of the world, Koons was varsity end on the football team and catcher of the 1914 baseball team, while Vetterlein shone at ice hockey. Lippincott was a track star.

It is Meredith's intention to organize an aviation section, enlisting former and present Penn athletes who have been graduated within the last five years.

WOMAN ASKS COURT TO DENY LIQUOR LICENSE

Says Her Plea to Saloonkeeper to Refuse to Sell to Her Son Was Ignored

Refusal of a saloonkeeper to bar her son from getting drinks on the basis for action started in the License Court today against the renewal of the retail liquor license of William H. O'Neill, 1005 McKean street.

BEQUESTS TO CHARITY

Orphan Asylums Benefit Under Two Testaments

Bequests of \$5000 to the Philadelphia Orphan Asylum, \$2000 to the Children's Aid Society, \$2000 to St. Christopher's Hospital and \$1000 to the Female Bible Society of Philadelphia are included in the will of Marianne Biddle, who died March 4 at her residence in Chestnut Hill.

Charitable bequests included in the will of Margaret Shay, who died in the Presbyterian Hospital, are \$300 to the Little Sisters of the Poor, a like sum each to St. John's Orphan Asylum and St. Vincent's Orphanage and \$100 each to the Seminary of St. Charles Borromeo and St. Joseph's House for Homeless Industrious Boys.

Other will probated today were those of S. J. Wetherill, Bryn Mawr, \$22,500; Leanne Gerhab, 3404 North Nineteenth street, \$100,000; Maryvitta Barth, who died in the German Hospital, \$4250; George Billings, 207 South Cecil street, \$2000, and Helen Nicholas, Bustleton, \$2000.

Heads Annapolis—"War" Class ANNAPOLIS, Md., March 26.—F. E. Heberle, California, leads the members of his class, which will be graduated next Thursday from the Naval Academy two months in advance of the scheduled time because of the immediate need of officers.

The other star members of the class in their order of merit are: J. E. Ostrander, Massachusetts; E. E. Brady, Jr., Maine; H. L. Maples, Alabama; G. W. McIver, California; A. L. Mokey, Kentucky; H. B. Oster, New York; R. E. Deen, Mississippi, and Colin Campbell, Kansas.

MINISTERS DISCUSS PREACHING IN PARK One Asys Commissioners Are Seeking Adequate Excuse to Frustrate Baptists' Plans

Preaching in Fairmount Park became a live issue today at the quarterly meeting of the Ministerial Association of Philadelphia held in the First Baptist Church, Seventeenth and Sanson streets.

The particular point of discussion was whether the Park Commission objected to the preaching of the Lemon Hill Association on the grounds of personal animosity or because of principles ruling against such park services.

The Rev. F. B. Parkin, a member of the committee appointed to take up the matter with the Park Commissioners, contended that members of that body made their objections purely on personal grounds.

The Rev. Mr. Ely, who was present at the meeting, replied that two years ago, when the matter was taken up with the Park Commission, the refusal to allow the services had been made without personal element entering into the decision.

George's rank as a patriot State was outlined by the Rev. Hugh Morris, pastor of the Central Presbyterian Church, in his address to the members of the association.

Acids Used to Ruin Yacht's Engines WILMINGTON, Del., March 26.—Acids have been poured into the engines of the yacht Nokomis, owned by C. I. Dodge, Detroit manufacturer, which is at the dock here, it was discovered today. The machinery has been ruined. The Nokomis had been offered the Government in this event of war.

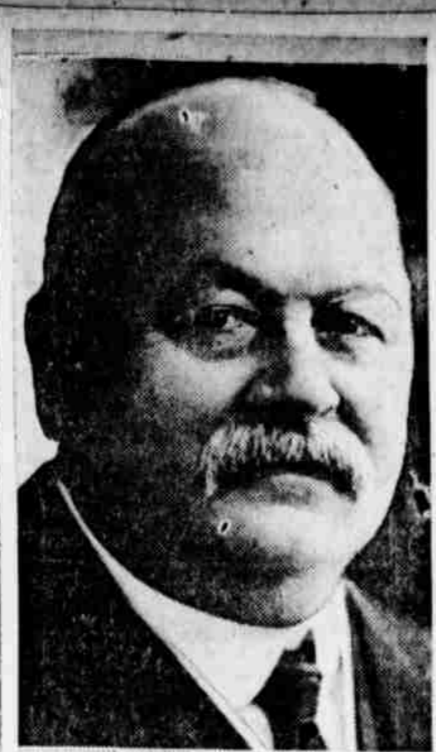


Photo by Photo-Crafters. WILLIAM B. RILEY Philadelphia manufacturer and director of Chamber of Commerce, who died today at his home in Wayne.

UNION LEAGUE'S FATAL DEATH TRIANGLE AGAIN

William B. Riley, Succumbing, Completes Traditional Fatality Among Members

The "fatal death three" of the Union League was completed today when William B. Riley, head of the blanket manufacturing firm of William B. Riley & Co., 228 Chestnut street, died at his home, Pembroke avenue, Wayne.

For years it has been the contention of many members of the league that, when one member dies, two more deaths, making a total of three, are certain to occur among the members within three days' time.

Mr. Riley was seventy years old and was born in Riegelville, Pa. When a young man he was employed by the firm of Lippincott, Ceale & Co., cloth importers, formerly located at Third and Cherry streets. Forty years ago he established the firm which bears his name.

He served as a try rail-laying machine LANCASTER, Pa., March 26.—An automatic machine is being installed at Dillerville by the Pennsylvania Railroad which, it is believed, will be a substitute for "gangs" in the laying and repairing of rails.

J. E. Caldwell & Co. Chestnut—Juniper—South Penn Square

JEWELRY and SILVERWARE Of Individual Design for Wedding Remembrances

YOU WASH YOUR FACE AND HANDS BUT YOUR TEETH--? If you cleaned your teeth half as conscientiously and intelligently as you clean your face and hands, your dentist would be satisfied.

THE S.S. WHITE DENTAL MFG. COMPANY MOUTH AND TOILET PREPARATIONS 211 SOUTH 12TH ST. PHILADELPHIA

COUPON Please send me a copy of "Good Teeth How They Grow And How To Keep Them," also a sample tube of S. S. White Tooth Paste.

MINISTERS DISCUSS PREACHING IN PARK

One Asys Commissioners Are Seeking Adequate Excuse to Frustrate Baptists' Plans

Preaching in Fairmount Park became a live issue today at the quarterly meeting of the Ministerial Association of Philadelphia held in the First Baptist Church, Seventeenth and Sanson streets.

The particular point of discussion was whether the Park Commission objected to the preaching of the Lemon Hill Association on the grounds of personal animosity or because of principles ruling against such park services.

The Rev. F. B. Parkin, a member of the committee appointed to take up the matter with the Park Commissioners, contended that members of that body made their objections purely on personal grounds.

The Rev. Mr. Ely, who was present at the meeting, replied that two years ago, when the matter was taken up with the Park Commission, the refusal to allow the services had been made without personal element entering into the decision.

George's rank as a patriot State was outlined by the Rev. Hugh Morris, pastor of the Central Presbyterian Church, in his address to the members of the association.

Acids Used to Ruin Yacht's Engines WILMINGTON, Del., March 26.—Acids have been poured into the engines of the yacht Nokomis, owned by C. I. Dodge, Detroit manufacturer, which is at the dock here, it was discovered today.

He served as a try rail-laying machine LANCASTER, Pa., March 26.—An automatic machine is being installed at Dillerville by the Pennsylvania Railroad which, it is believed, will be a substitute for "gangs" in the laying and repairing of rails.

The principle is similar to that of a quarry drill and power is to be served from a small station, now under construction. The stretch of track at Dillerville is regarded as a perfect place for a trial of the machine.

ROTARIANS OPEN THEIR ANNUAL CONFERENCE

Six Hundred Third District Delegates Expected to Attend Convention in Reading, Pa.

READING, Pa., March 26.—The annual conference of the Third District of Rotary Clubs opened at the Berkshire Hotel here today and is expected to bring together about 600 delegates from rotary clubs in Philadelphia, Baltimore, Pittsburgh, Scranton, Washington, D. C., Wilmington, Wilkes-Barre, York, Erie, Easton, Altoona and other leading cities of Pennsylvania.

The first real business of the conference was a meeting of the presidents and secretaries of the twenty-five clubs in the third district at the Berkshire Hotel. The meeting was open to rotarians in general and was followed by a smoker for delegates.

Among the distinguished visitors expected to attend the conference is Arch C. Klumph, of Cleveland, international president. The big feature of the conference will be the annual election of a district president, which is on the program for tomorrow. President McFarland is not a candidate to succeed himself.

SAVES PANTS; HATS BURNED

\$300 Worth of Panamas Lost, While \$2.50 Trousers Are Rescued

One hundred Panama hats disappeared in smoke this afternoon when fire swept the house of Samuel Morrison, at 2506 North Natrona street.

Louis Kamena, a barber at the corner, heard Mrs. Morrison's cries and ran in the house. He rescued a pair of pants worth \$2.50, while the hats, valued at \$300, were burned. The fire was extinguished after it had caused considerable damage to the house.

THE NEW DOUBLE-BREASTERS Coat fits snug at waist and over hips; high narrow shoulders and sleeves; short skirt; with slashed vertical pockets; with outside patch pockets; or with regular pockets. Trousers extremely narrow, \$18, \$20, \$22.50, \$25, \$30.

THE NEW DOUBLE-BREASTERS Coat fits snug at waist and over hips; high narrow shoulders and sleeves; short skirt; with slashed vertical pockets; with outside patch pockets; or with regular pockets. Trousers extremely narrow, \$18, \$20, \$22.50, \$25, \$30.

THE NEW DOUBLE-BREASTERS Coat fits snug at waist and over hips; high narrow shoulders and sleeves; short skirt; with slashed vertical pockets; with outside patch pockets; or with regular pockets. Trousers extremely narrow, \$18, \$20, \$22.50, \$25, \$30.

THE NEW DOUBLE-BREASTERS Coat fits snug at waist and over hips; high narrow shoulders and sleeves; short skirt; with slashed vertical pockets; with outside patch pockets; or with regular pockets. Trousers extremely narrow, \$18, \$20, \$22.50, \$25, \$30.

THE NEW DOUBLE-BREASTERS Coat fits snug at waist and over hips; high narrow shoulders and sleeves; short skirt; with slashed vertical pockets; with outside patch pockets; or with regular pockets. Trousers extremely narrow, \$18, \$20, \$22.50, \$25, \$30.

THE NEW DOUBLE-BREASTERS Coat fits snug at waist and over hips; high narrow shoulders and sleeves; short skirt; with slashed vertical pockets; with outside patch pockets; or with regular pockets. Trousers extremely narrow, \$18, \$20, \$22.50, \$25, \$30.

THE NEW DOUBLE-BREASTERS Coat fits snug at waist and over hips; high narrow shoulders and sleeves; short skirt; with slashed vertical pockets; with outside patch pockets; or with regular pockets. Trousers extremely narrow, \$18, \$20, \$22.50, \$25, \$30.

THE NEW DOUBLE-BREASTERS Coat fits snug at waist and over hips; high narrow shoulders and sleeves; short skirt; with slashed vertical pockets; with outside patch pockets; or with regular pockets. Trousers extremely narrow, \$18, \$20, \$22.50, \$25, \$30.

THE NEW DOUBLE-BREASTERS Coat fits snug at waist and over hips; high narrow shoulders and sleeves; short skirt; with slashed vertical pockets; with outside patch pockets; or with regular pockets. Trousers extremely narrow, \$18, \$20, \$22.50, \$25, \$30.

THE NEW DOUBLE-BREASTERS Coat fits snug at waist and over hips; high narrow shoulders and sleeves; short skirt; with slashed vertical pockets; with outside patch pockets; or with regular pockets. Trousers extremely narrow, \$18, \$20, \$22.50, \$25, \$30.

THE NEW DOUBLE-BREASTERS Coat fits snug at waist and over hips; high narrow shoulders and sleeves; short skirt; with slashed vertical pockets; with outside patch pockets; or with regular pockets. Trousers extremely narrow, \$18, \$20, \$22.50, \$25, \$30.

THE NEW DOUBLE-BREASTERS Coat fits snug at waist and over hips; high narrow shoulders and sleeves; short skirt; with slashed vertical pockets; with outside patch pockets; or with regular pockets. Trousers extremely narrow, \$18, \$20, \$22.50, \$25, \$30.

THE NEW DOUBLE-BREASTERS Coat fits snug at waist and over hips; high narrow shoulders and sleeves; short skirt; with slashed vertical pockets; with outside patch pockets; or with regular pockets. Trousers extremely narrow, \$18, \$20, \$22.50, \$25, \$30.

ROTARIANS OPEN THEIR ANNUAL CONFERENCE

Six Hundred Third District Delegates Expected to Attend Convention in Reading, Pa.

READING, Pa., March 26.—The annual conference of the Third District of Rotary Clubs opened at the Berkshire Hotel here today and is expected to bring together about 600 delegates from rotary clubs in Philadelphia, Baltimore, Pittsburgh, Scranton, Washington, D. C., Wilmington, Wilkes-Barre, York, Erie, Easton, Altoona and other leading cities of Pennsylvania.

The first real business of the conference was a meeting of the presidents and secretaries of the twenty-five clubs in the third district at the Berkshire Hotel. The meeting was open to rotarians in general and was followed by a smoker for delegates.

Among the distinguished visitors expected to attend the conference is Arch C. Klumph, of Cleveland, international president. The big feature of the conference will be the annual election of a district president, which is on the program for tomorrow. President McFarland is not a candidate to succeed himself.

SAVES PANTS; HATS BURNED \$300 Worth of Panamas Lost, While \$2.50 Trousers Are Rescued

One hundred Panama hats disappeared in smoke this afternoon when fire swept the house of Samuel Morrison, at 2506 North Natrona street.

Louis Kamena, a barber at the corner, heard Mrs. Morrison's cries and ran in the house. He rescued a pair of pants worth \$2.50, while the hats, valued at \$300, were burned. The fire was extinguished after it had caused considerable damage to the house.

THE NEW DOUBLE-BREASTERS Coat fits snug at waist and over hips; high narrow shoulders and sleeves; short skirt; with slashed vertical pockets; with outside patch pockets; or with regular pockets. Trousers extremely narrow, \$18, \$20, \$22.50, \$25, \$30.

THE NEW DOUBLE-BREASTERS Coat fits snug at waist and over hips; high narrow shoulders and sleeves; short skirt; with slashed vertical pockets; with outside patch pockets; or with regular pockets. Trousers extremely narrow, \$18, \$20, \$22.50, \$25, \$30.

THE NEW DOUBLE-BREASTERS Coat fits snug at waist and over hips; high narrow shoulders and sleeves; short skirt; with slashed vertical pockets; with outside patch pockets; or with regular pockets. Trousers extremely narrow, \$18, \$20, \$22.50, \$25, \$30.

THE NEW DOUBLE-BREASTERS Coat fits snug at waist and over hips; high narrow shoulders and sleeves; short skirt; with slashed vertical pockets; with outside patch pockets; or with regular pockets. Trousers extremely narrow, \$18, \$20, \$22.50, \$25, \$30.

THE NEW DOUBLE-BREASTERS Coat fits snug at waist and over hips; high narrow shoulders and sleeves; short skirt; with slashed vertical pockets; with outside patch pockets; or with regular pockets. Trousers extremely narrow, \$18, \$20, \$22.50, \$25, \$30.

THE NEW DOUBLE-BREASTERS Coat fits snug at waist and over hips; high narrow shoulders and sleeves; short skirt; with slashed vertical pockets; with outside patch pockets; or with regular pockets. Trousers extremely narrow, \$18, \$20, \$22.50, \$25, \$30.

THE NEW DOUBLE-BREASTERS Coat fits snug at waist and over hips; high narrow shoulders and sleeves; short skirt; with slashed vertical pockets; with outside patch pockets; or with regular pockets. Trousers extremely narrow, \$18, \$20, \$22.50, \$25, \$30.

THE NEW DOUBLE-BREASTERS Coat fits snug at waist and over hips; high narrow shoulders and sleeves; short skirt; with slashed vertical pockets; with outside patch pockets; or with regular pockets. Trousers extremely narrow, \$18, \$20, \$22.50, \$25, \$30.

THE NEW DOUBLE-BREASTERS Coat fits snug at waist and over hips; high narrow shoulders and sleeves; short skirt; with slashed vertical pockets; with outside patch pockets; or with regular pockets. Trousers extremely narrow, \$18, \$20, \$22.50, \$25, \$30.

THE NEW DOUBLE-BREASTERS Coat fits snug at waist and over hips; high narrow shoulders and sleeves; short skirt; with slashed vertical pockets; with outside patch pockets; or with regular pockets. Trousers extremely narrow, \$18, \$20, \$22.50, \$25, \$30.

THE NEW DOUBLE-BREASTERS Coat fits snug at waist and over hips; high narrow shoulders and sleeves; short skirt; with slashed vertical pockets; with outside patch pockets; or with regular pockets. Trousers extremely narrow, \$18, \$20, \$22.50, \$25, \$30.

THE NEW DOUBLE-BREASTERS Coat fits snug at waist and over hips; high narrow shoulders and sleeves; short skirt; with slashed vertical pockets; with outside patch pockets; or with regular pockets. Trousers extremely narrow, \$18, \$20, \$22.50, \$25, \$30.

THE NEW DOUBLE-BREASTERS Coat fits snug at waist and over hips; high narrow shoulders and sleeves; short skirt; with slashed vertical pockets; with outside patch pockets; or with regular pockets. Trousers extremely narrow, \$18, \$20, \$22.50, \$25, \$30.

THE NEW DOUBLE-BREASTERS Coat fits snug at waist and over hips; high narrow shoulders and sleeves; short skirt; with slashed vertical pockets; with outside patch pockets; or with regular pockets. Trousers extremely narrow, \$18, \$20, \$22.50, \$25, \$30.

THE NEW DOUBLE-BREASTERS Coat fits snug at waist and over hips; high narrow shoulders and sleeves; short skirt; with slashed vertical pockets; with outside patch pockets; or with regular pockets. Trousers extremely narrow, \$18, \$20, \$22.50, \$25, \$30.

THE NEW DOUBLE-BREASTERS Coat fits snug at waist and over hips; high narrow shoulders and sleeves; short skirt; with slashed vertical pockets; with outside patch pockets; or with regular pockets. Trousers extremely narrow, \$18, \$20, \$22.50, \$25, \$30.

THE NEW DOUBLE-BREASTERS Coat fits snug at waist and over hips; high narrow shoulders and sleeves; short skirt; with slashed vertical pockets; with outside patch pockets; or with regular pockets. Trousers extremely narrow, \$18, \$20, \$22.50, \$25, \$30.

THE NEW DOUBLE-BREASTERS Coat fits snug at waist and over hips; high narrow shoulders and sleeves; short skirt; with slashed vertical pockets; with outside patch pockets; or with regular pockets. Trousers extremely narrow, \$18, \$20, \$22.50, \$25, \$30.

THE NEW DOUBLE-BREASTERS Coat fits snug at waist and over hips; high narrow shoulders and sleeves; short skirt; with slashed vertical pockets; with outside patch pockets; or with regular pockets. Trousers extremely narrow, \$18, \$20, \$22.50, \$25, \$30.

THE NEW DOUBLE-BREASTERS Coat fits snug at waist and over hips; high narrow shoulders and sleeves; short skirt; with slashed vertical pockets; with outside patch pockets; or with regular pockets. Trousers extremely narrow, \$18, \$20, \$22.50, \$25, \$30.

THE NEW DOUBLE-BREASTERS Coat fits snug at waist and over hips; high narrow shoulders and sleeves; short skirt; with slashed vertical pockets; with outside patch pockets; or with regular pockets. Trousers extremely narrow, \$18, \$20, \$22.50, \$25, \$30.

THE NEW DOUBLE-BREASTERS Coat fits snug at waist and over hips; high narrow shoulders and sleeves; short skirt; with slashed vertical pockets; with outside patch pockets; or with regular pockets. Trousers extremely narrow, \$18, \$20, \$22.50, \$25, \$30.

Don't Let the Trees beat you to it!



THE NEW DOUBLE-BREASTERS Coat fits snug at waist and over hips; high narrow shoulders and sleeves; short skirt; with slashed vertical pockets; with outside patch pockets; or with regular pockets. Trousers extremely narrow, \$18, \$20, \$22.50, \$25, \$30.

¶ The sap is starting to run through trunk and limb; any day now the buds will begin to fill out, and Spring will be here indeed!

¶ Then most men will want to be togged out in new clothes to show that they're stepping even with the calendar!

¶ When you feel that impulse, come to Perry! Look at these new double-breasted Suits, some with belts, some with vertical slashed pockets; some with plain backs, some with pleats and tucks!

¶ They're priced at \$18, \$20, \$22.50, \$25, \$30 and will give you satisfaction and comfort that's worth a lot more to you than the price you pay!

¶ Everything in Spring Clothes that wide-awake, aggressive men will want to wear!

\$15, \$18, \$20, \$25, \$30 for Spring Suits and Topcoats

PERRY & CO. "N. B. T." 16th & Chestnut Sts.

Advertisement for Bedell Fashion Shop featuring 'New Easter Coats In Special Sale' and 'Wonderful Presentation Of Hundreds New Styles \$15'. Includes an illustration of a woman in a coat and hat.

Advertisement for Lamps from The Horn & Brannen Mfg. Co., featuring an illustration of a lamp and text describing the quality and variety of their products.

Advertisement for The Philadelphia Art Galleries featuring 'Valuable Paintings, Rich Furnishings, Costly Appointments' and 'Aubusson Carpets, Oriental Rugs, Old Silver Sheffield Plate, Diamonds and Jewelry Collection of Sportsmen's Trophies'.

Advertisement for S.S. White Dental Mfg. Company featuring 'YOU WASH YOUR FACE AND HANDS BUT YOUR TEETH--?' and 'S.S. WHITE TOOTH PASTE' with a coupon for a free booklet.