

A FORECAST OF THE MID-LENTEN MENU AWAITING THIS WEEK'S PLAYGOERS



GERTRUDE HOFFMANN IS AGAIN A KEITH HEAD-LINER



T. ROY BARNES, COMEDIAN, AND A BEVY OF PRETTY GIRLS FROM "KATINKA," AT THE LYRIC



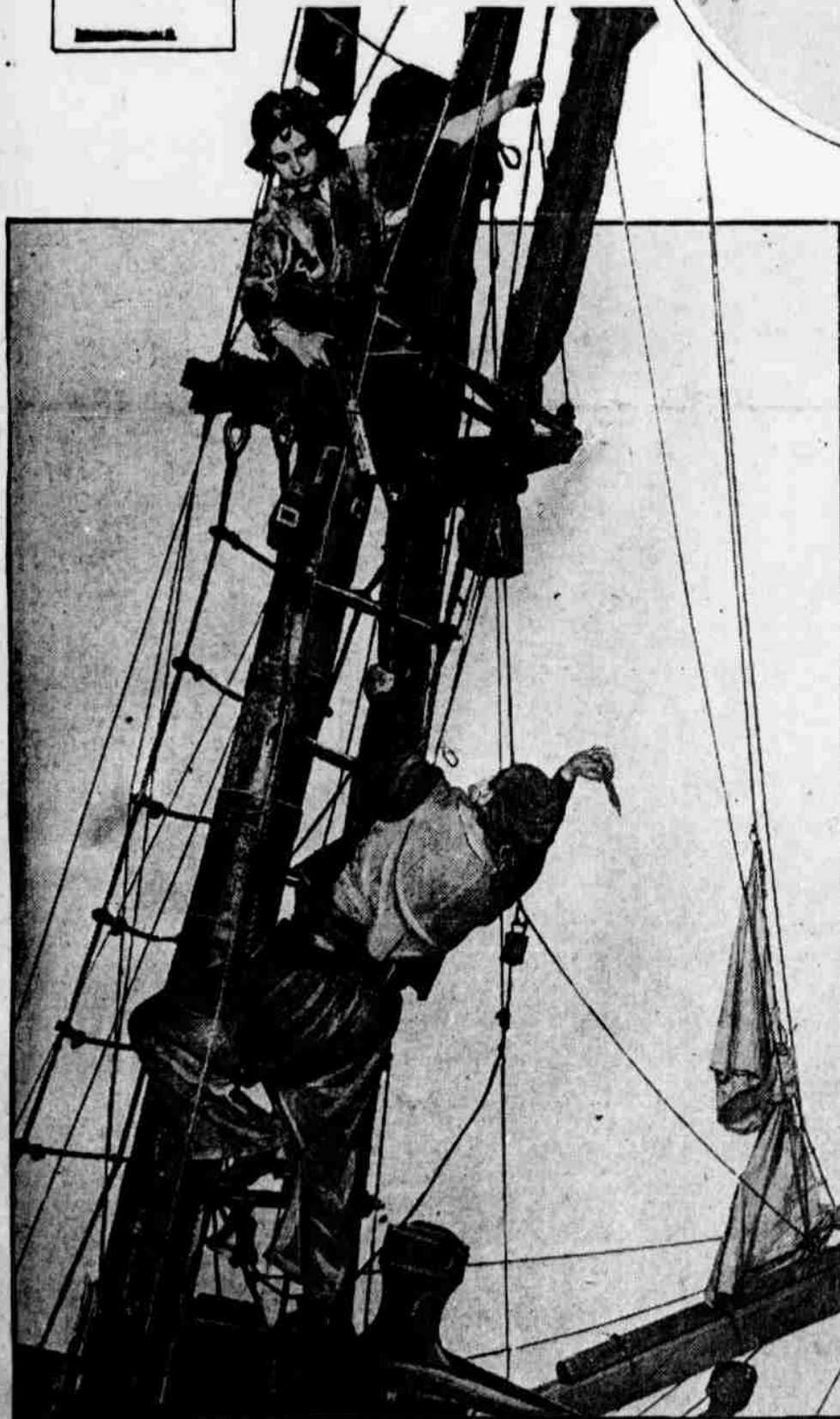
JEAN LYNES IN "PRETTY BABY," AT THE ORPHEUM



NINA PAYNE OFFERS A FUTURIST SUGGESTION AT KEITH'S



EDNA HIBBERD, ELISE ST. JOHN AND ERNEST COSSART IN "FAIR AND WARMER," AT THE GARRICK



CLIMAX OF THE EXCITING SHIP SCENE IN "TREASURE ISLAND," AT THE BROAD



FRANCES WOODBURY IN "SAPHO," AT THE KNICKERBOCKER



MITCHELL LEWIS HAS MADE A HIT IN "THE BARRIER"



MARGIT PAPOLCZY, AT THE LITTLE THEATRE, IN "A DOLL'S HOUSE"

MITZI, SEEN AS A MINIATURE NAPOLEON IN "POM-POM," AT THE FORREST



JANE LOWE, AT THE WALNUT IN "THE UNBORN CHILD"



WILLIAM FARNUM, WHO WILL BE SEEN AT THE ARCADIA IN "A TALE OF TWO CITIES" GASPS AS HE SURVEYS THE 7 FEET 5 INCHES OF J. G. TARVER, WHO HAS JUST JOINED THE WILLIAM FARNUM PLAYERS



NELLIE BENNETT, AT THE BROADWAY



ANNA MACK IS AMONG THE "GROWN-UP BABIES" AT TROCADERO



PAM LAWRENCE, WITH "PUSS-PUSS," AT THE CASINO