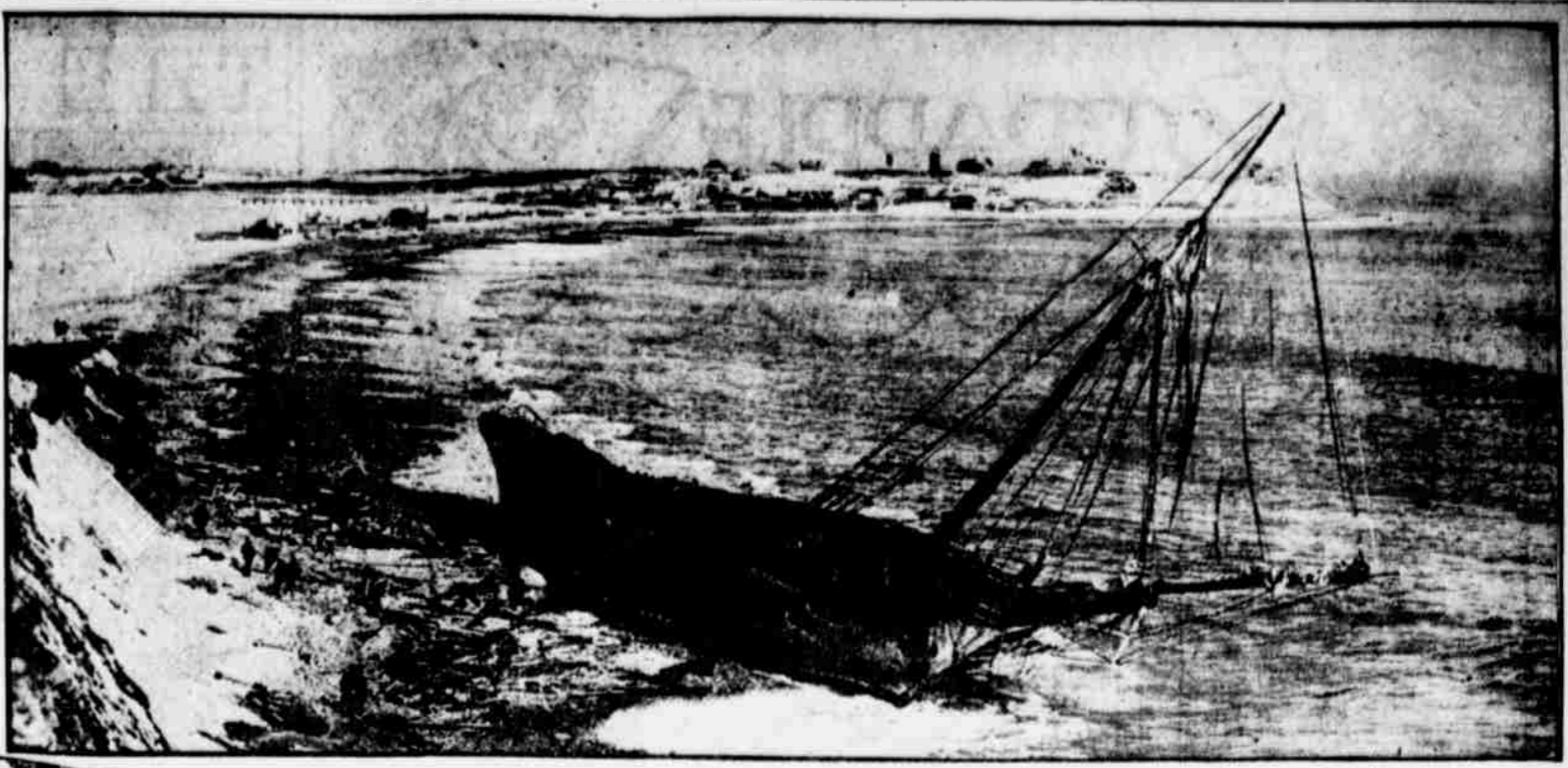
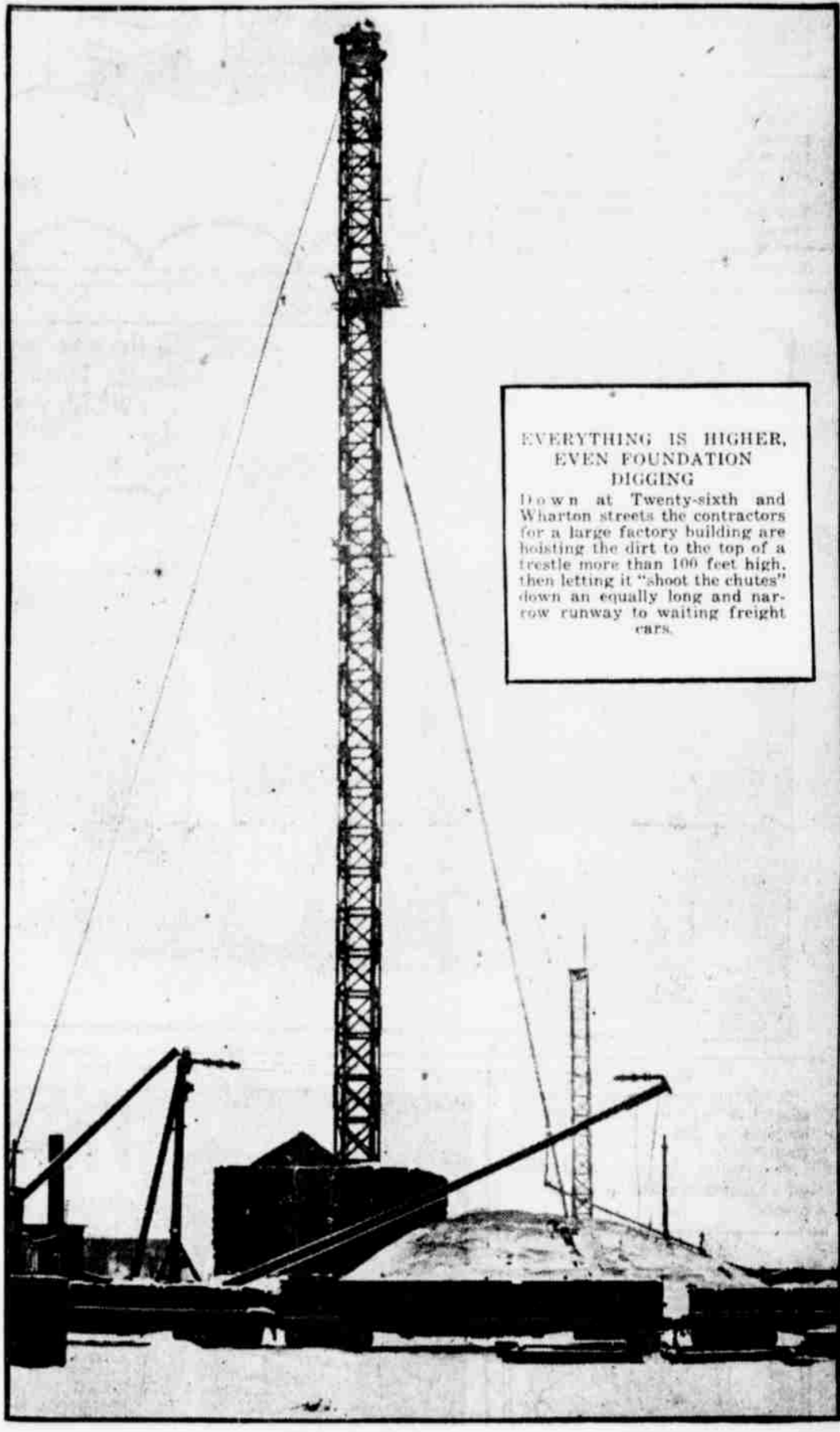




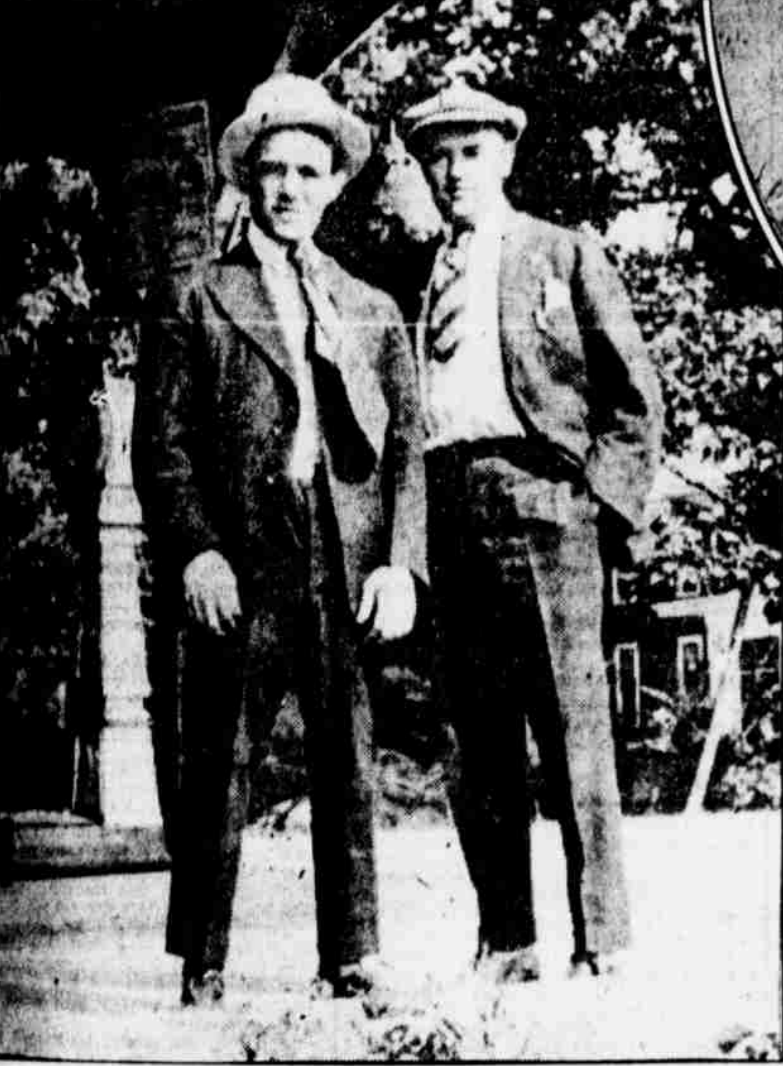
THE ONION TAKES RANK AMONG NEGOTIABLE COMMODITIES
An actual occurrence snapped in a pawnshop, in which the now high-priced vegetable figured as the basis for a loan.



FOUNDING TO PIECES ON "A STERN AND ROCKBOUND COAST"
Seven members of the crew of the schooner Henry Withington fought for life against mountainous waves before rescue by a rope stretched from her deck to shore, a quarter mile away, on the coast near Scituate, Mass.



EVERYTHING IS HIGHER, EVEN FOUNDATION DIGGING
Down at Twenty-sixth and Wharton streets the contractors for a large factory building are hoisting the dirt to the top of a trestle more than 100 feet high, then letting it "shoot the chutes" down an equally long and narrow runway to waiting freight cars.



"JUST BEFORE THE BATTLE"
George Chaney and his manager, Henry Bletzter, taken at Cedar Point, Ohio, shortly before Chaney's short but memorable battle with Kilbane. George meets Johnny Mayo tonight at the National A. C.



"DYNAMITE" ENJOYS THE PICTORIAL SECTION
The EVENING LEDGER has no more regular reader of its latest news-illustrating feature than the prize-winning mascot of Engine No. 32, at Sixth and Locust streets.



PENNSYLVANIA RAILROAD HELL GATE BRIDGE IS FORMALLY DEDICATED
President Samuel Rea is shown heading a party of officials of the Pennsylvania, New York, New Haven and Hartford and Long Island Railroads on the first train passing over this important link in the all-rail line between Halifax and Key West. Gustav Lindenthal, designer of the bridge, at right.



NEW YORK BELLHOPS STUDY ELOCUTION
The McAlpin Hotel has engaged Miss Edna Baily to teach its boys voice control and inflection, the better to page guests.

Copyright, International Film Service