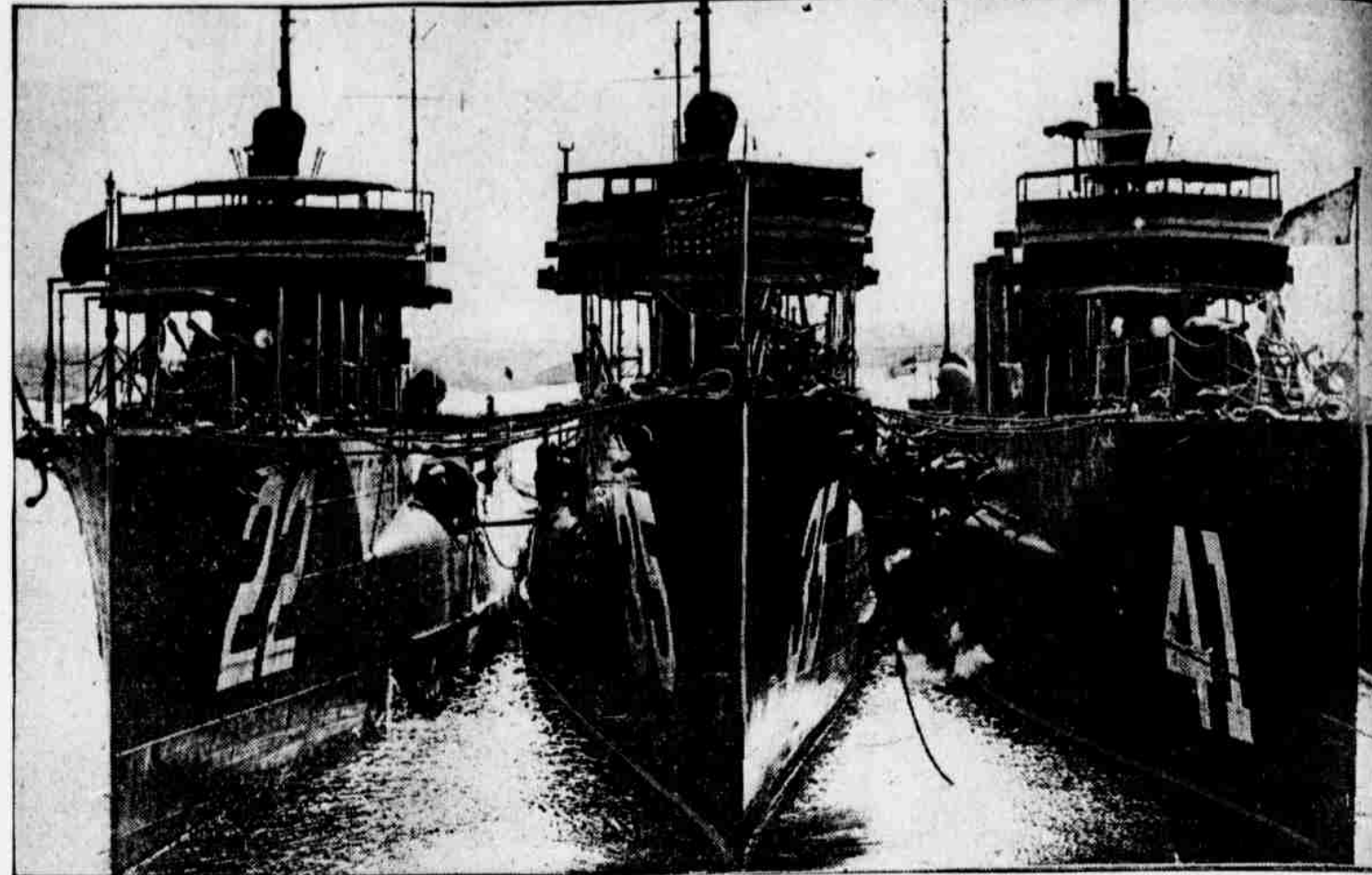
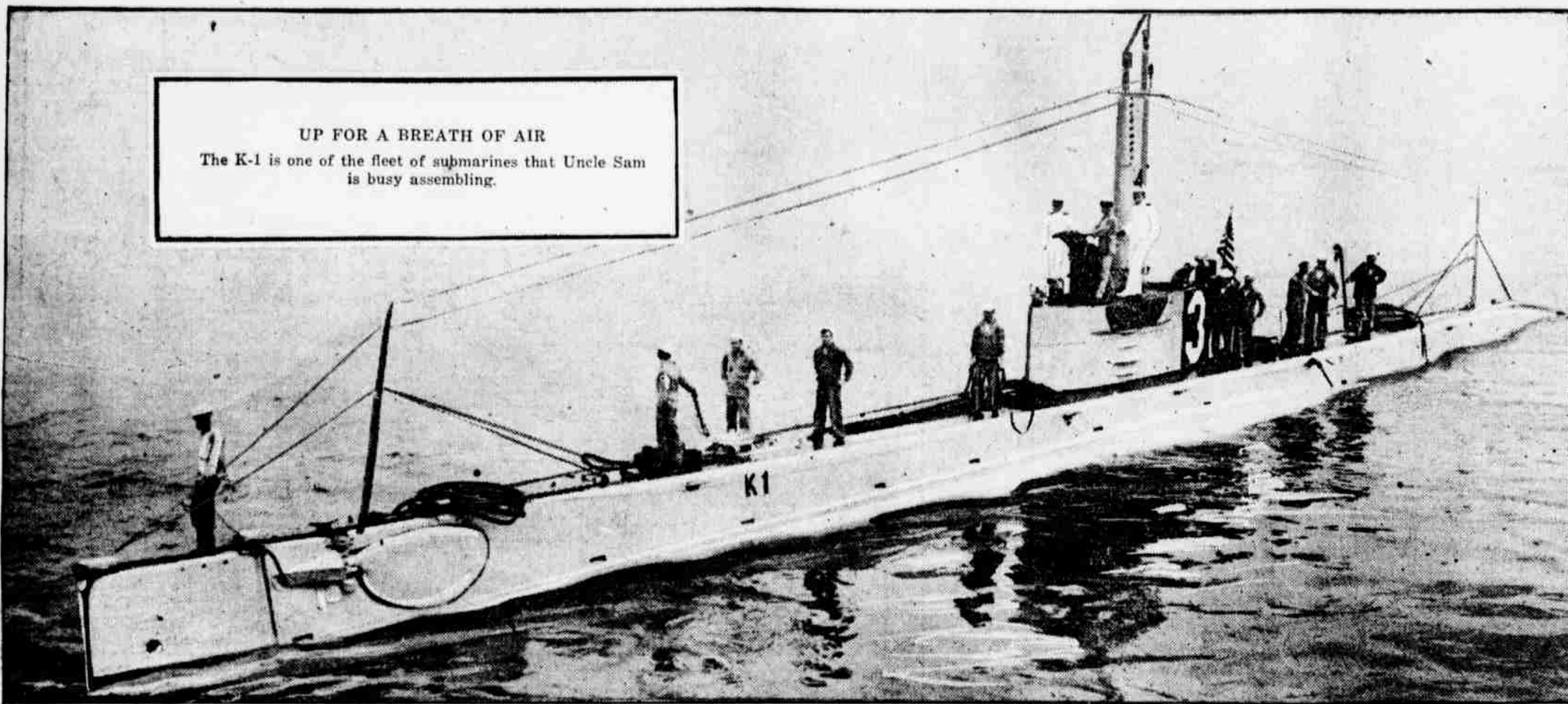


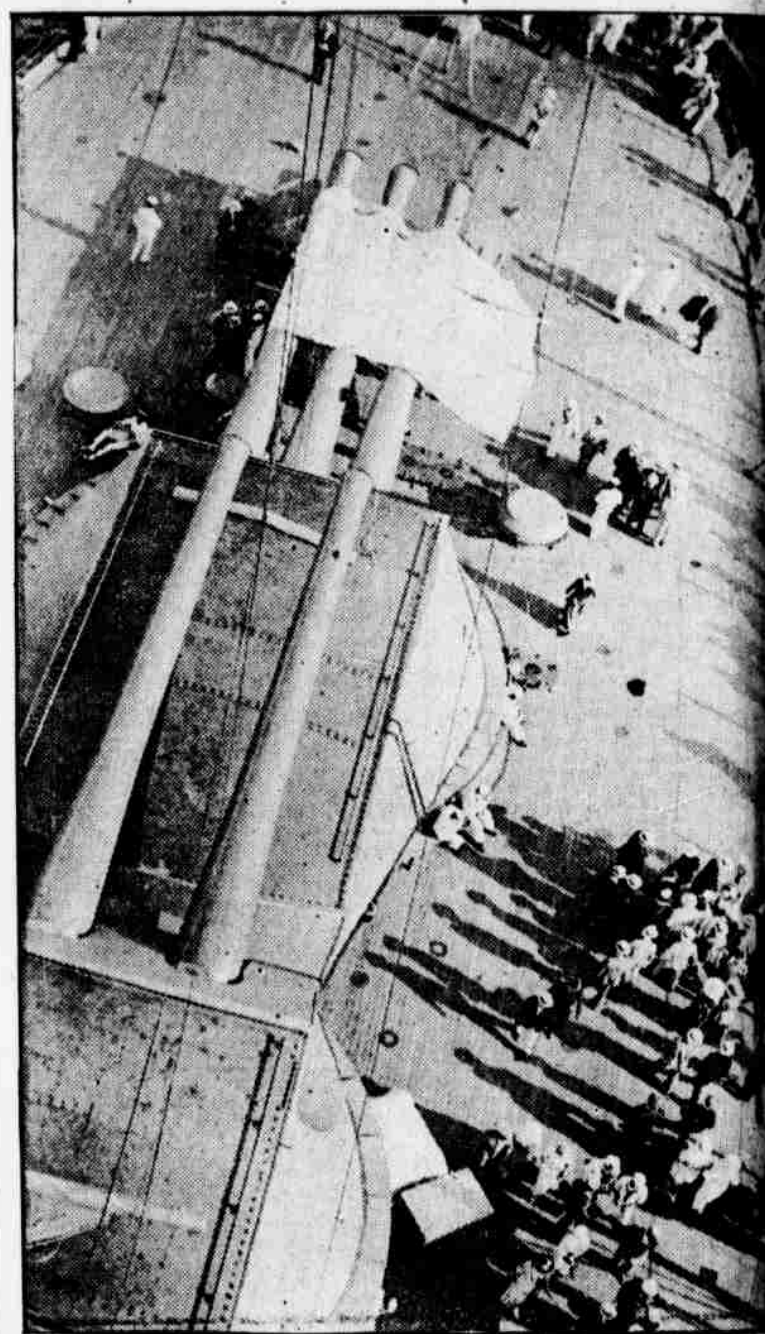
SPEEDY TORPEDOBOAT DESTROYERS PREPARED TO DASH OUT TO SEA AT A MOMENT'S NOTICE FROM THE PHILADELPHIA NAVY YARD
THE VESSEL WITH NO. 40 PAINTED ON ITS BOW IS THE BEALE. NO. 45 IS THE DOWNES



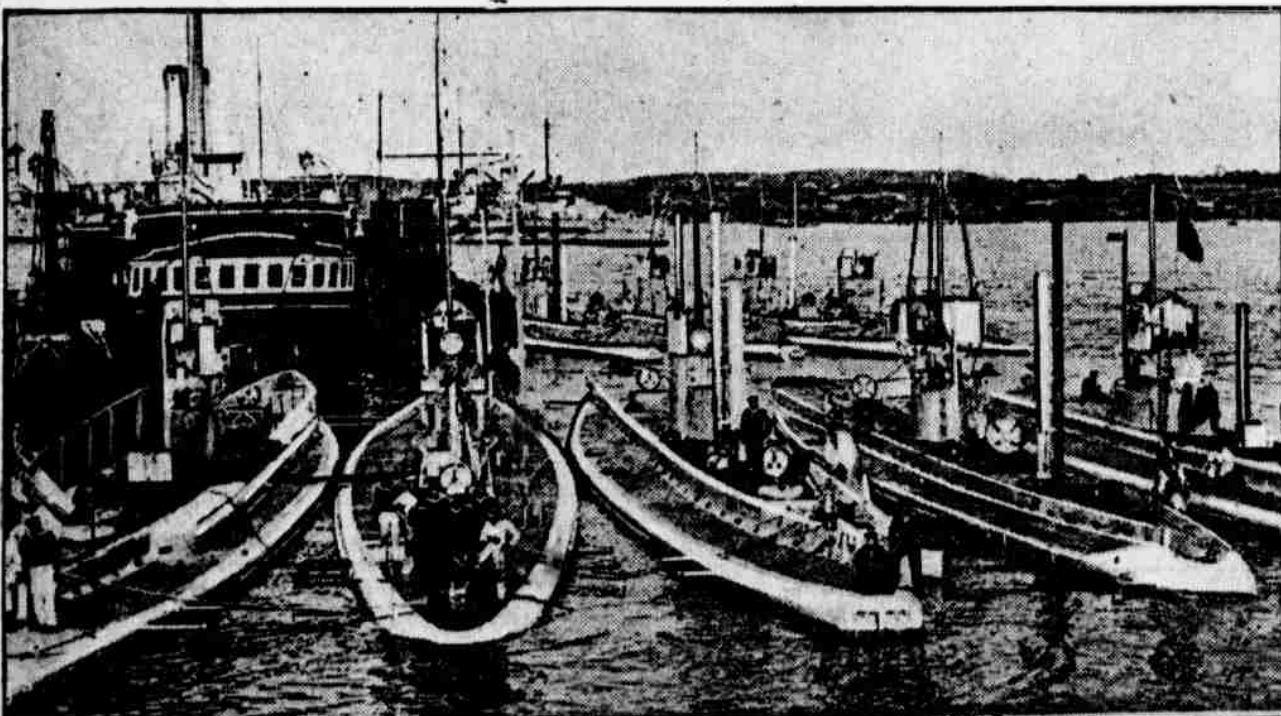
ABOVE ARE THE PAULDING, THE AMMON AND THE JOUETT, BEARING THE NOS. 22, 35 AND 41, RESPECTIVELY



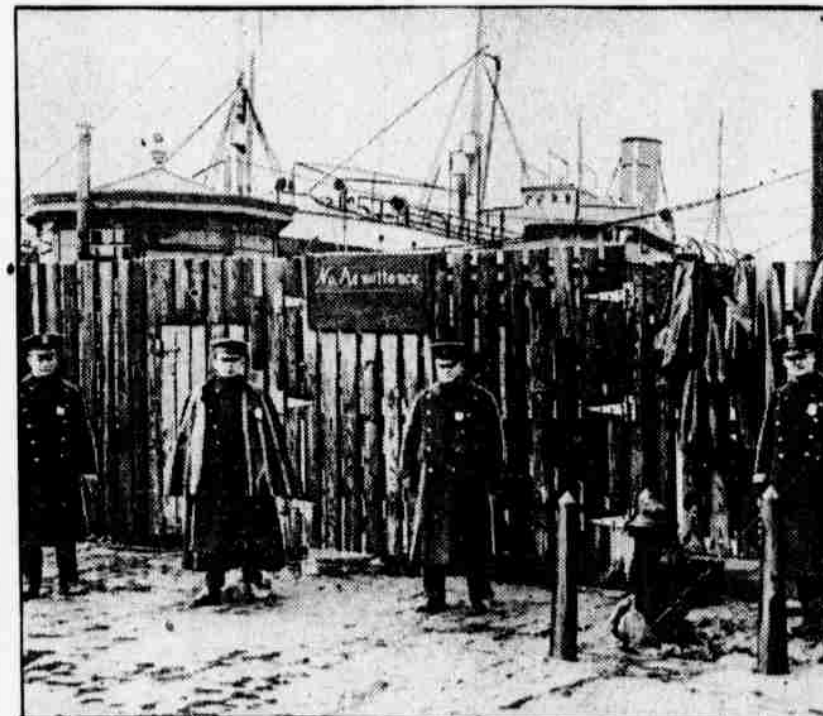
UP FOR A BREATH OF AIR
The K-1 is one of the fleet of submarines that Uncle Sam is busy assembling.



LOOKING DOWN UPON THE DECK OF ONE OF UNCLE SAM'S BIG SEA FIGHTERS NOW PAYING A VISIT TO LEAGUE ISLAND



(c) International Film Service.
PART OF THE GREAT FLEET OF GERMAN SUBMARINES BEFORE THEIR DEPARTURE FROM KIEL, BY MEANS OF WHICH THE KAISER THREATENS TO WIPE THE COMMERCE OF THE ALLIES OFF THE SEAS



(c) American Press Association.
FOUR OF NEW YORK'S NEUTRALITY SQUAD ON GUARD BEFORE THE PIER AT WHICH THE VATERLAND AND OTHER GREAT INTERNED GERMAN LINERS ARE MOORED



INTERNED GERMAN SAILORS LIVING IN THE VILLAGE THEY HAVE CONSTRUCTED AT LEAGUE ISLAND ARE KEPT UNDER CONSTANT SURVEILLANCE
Among the quaint structures that have interested hundreds of visitors at the Navy Yard is the three-story windmill shown above. The businesslike marine is keeping his eye on anything the officers and crews of the interned Prinz Eitel Friedrich and the Kronprinz Wilhelm may be doing.

