

SCENES ATTENDING THE RETURN OF PHILADELPHIA'S CAVALRYMEN FROM THE MEXICAN BORDER, SHOWING THE UNLOADING OF THEIR EQUIPMENT FROM FREIGHT CARS PENDING THEIR FORMAL MUSTERING OUT WITHIN A SHORT TIME



COAT OF RUSSIAN SABLE VALUED AT \$24,000 TO BE AUCTIONED AT THE PHILADELPHIA ART GALLERIES. THE BUTTONS ARE VALUED AT \$7.50 EACH



GUSTINE LAKE IS A FAVORITE WITH SKATERS FROM MANAYUNK



Photo by International Film Service.
PRESIDENT WILSON'S SHOES, MADE BY BROCKTON, MASS., FACTORY, WHICH USES 42 SEPARATE PIECES OF LEATHER



FRANKLIN STATUE AT THE UNIVERSITY GYMNASIUM IS DECORATED BY CLASS OF 1904

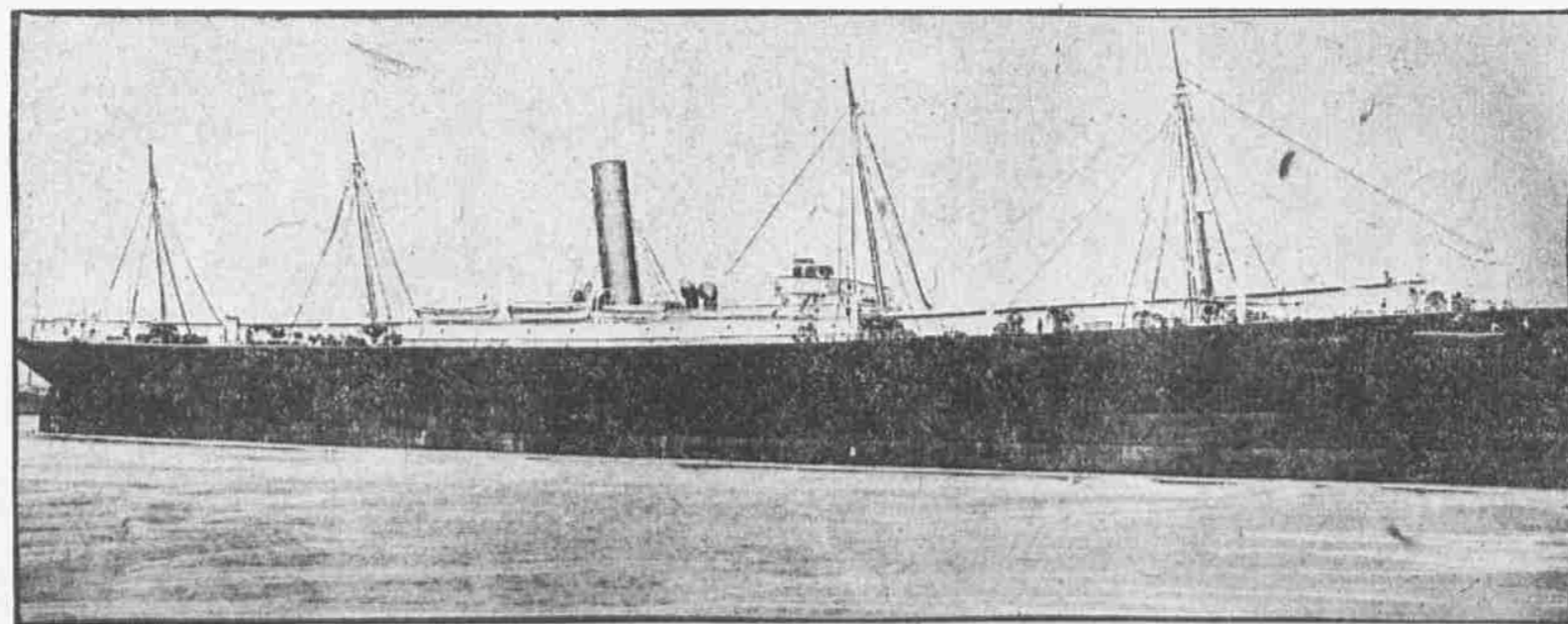


Photo by New York Shipbuilding Co.
THE SAMLAND, WHICH BROUGHT THE NEWS OF THE GERMAN RAIDER TO THE MARITIME WORLD, IS A PHILADELPHIA-BUILT BOAT, NOW CARRYING SUPPLIES TO BELGIUM



LIEUTENANT COLONEL SPENCER COSBY, UNITED STATES MILITARY ATTACHE AT PARIS, ORDERED TO RETURN HOME TO DO ENGINEERING DUTY



Photo by International Film Service.
GIRL DESIGNER AT WORK IN FACTORY IN WORCESTER, MASS., WHICH TURNS OUT VALENTINES BY THE TON



FAILURE OF MUNICIPAL ICE POND AT SIXTY-NINTH STREET, COBB'S CREEK, TO FREEZE OVER DISCOVERED TO BE DUE TO SUBMERGED HOT-WATER PIPE