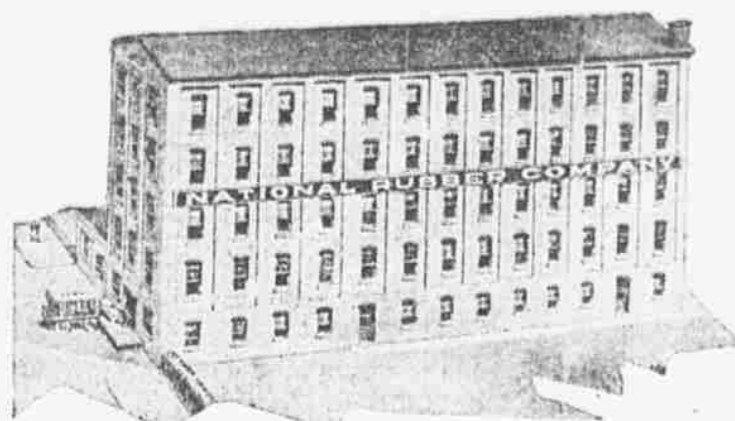




# Have Established a Splendid Reputation



FACTORY BUILDING OF THE NATIONAL RUBBER COMPANY IN 1912

**N**ATIONAL SPEEDWAY TIRES have the strength, the stamina, the appearance, the workmanship—all the qualifications that are demanded for thoroughly good tires. They deliver more than the average amount of mileage and successfully stand more than the average amount of punishment.

From the first day they were introduced National Speedway Tires have created an enormous demand—resulting in a tenfold production increase within the short space of one year.

The paramount quality of National Speedway Tires is made possible by the proximity of the Company's plant to open markets, in a location where good labor is obtained economically, and by a conservative, yet sufficient, capitalization.

### Guarantee Extraordinary

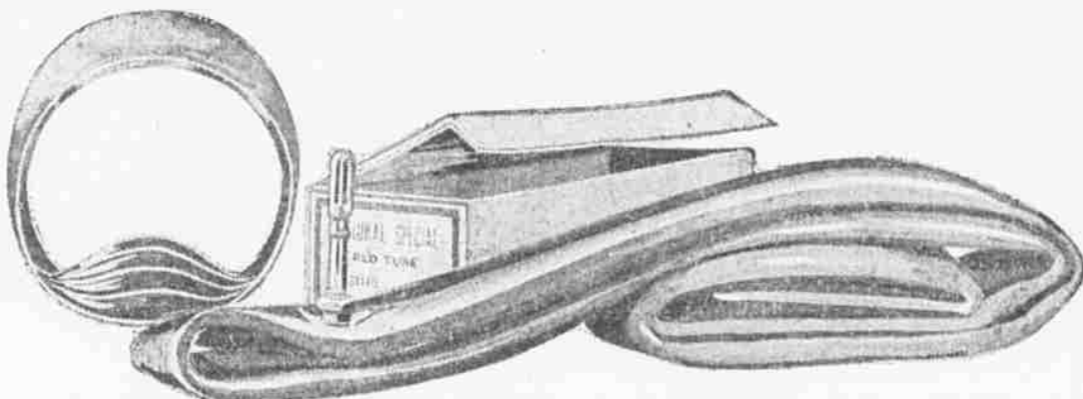
We guarantee Speedway Tires to outwear any other tire (same size), regardless of price, provided conditions of test are equal.

Place a Speedway Tire on your car opposite any competitive tire of the same size. If the Speedway tire does not outwear the other—all conditions being equal—we will give you a NEW tire FREE.

### Dealers: Investigate the NATIONAL Proposition

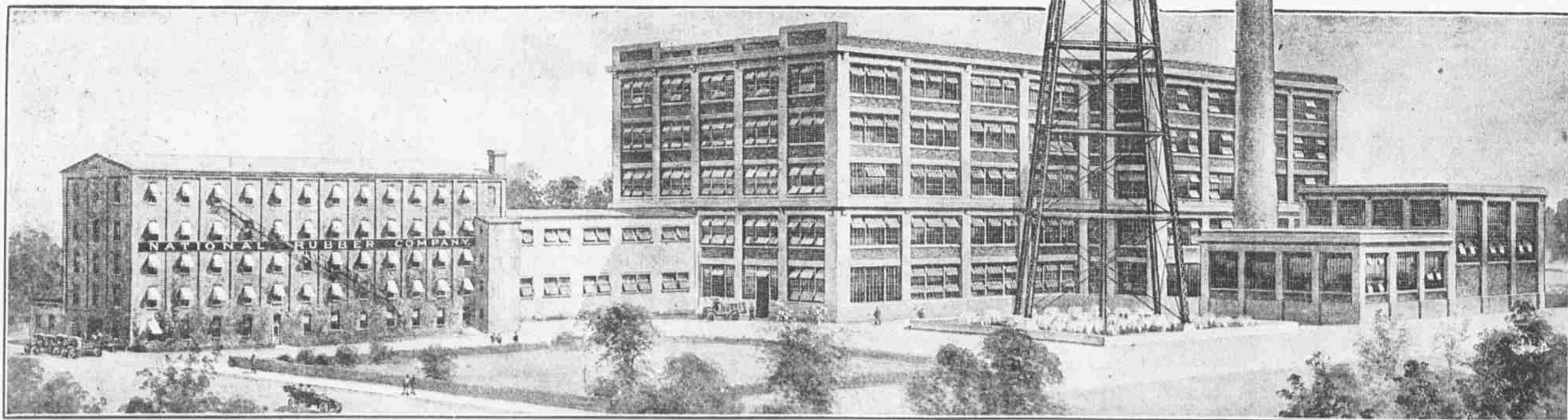
Successful dealers know that territory control of a good tire, well advertised and selling at a reasonable price, is the best tire to handle. Such a tire does not compete against itself—price cutting is eliminated. National SPEEDWAY Tires are adjusted on a five-thousand-mile basis. It will be to your advantage to post yourself as to our liberal terms, discounts and service.

NATIONAL RUBBER COMPANY



### NATIONAL Tubes Are Distinctly Better Than Most Tubes

Note cross section of National Tube shown in illustration. All our tubes, both red and gray, are built of layers, carefully laminated, thereby eliminating the possibility of slow leakage.



Mammoth New Five-Story Concrete, Glass and Steel Addition to the Plant of the National Rubber Company, Two Stories of Which Are Now Completed and in Operation—Convincing Evidence of the Tremendous Growth in the Four Years Since the Company Was Organized.

# NATIONAL RUBBER COMPANY

Pottstown

Penna.

