

FIGURES SHOW THIS PORT BEST FOR SHIPPERS

Comparisons Made at New Orleans Prove This Fact

CHARGES CHEAPEST ALONG ATLANTIC

Study of Expert Report Demonstrates Advantages of Philadelphia

DOES IT PAY? IT DOES

Exporters Need Only Examine Unbiased Testimony to Satisfy Themselves

This is the day of the efficiency expert. The cold science of facts and figures have the center of the commercial stage.

Of what advantage would it be to show up all the good points about the port of Philadelphia if the shipper, the exporter or the importer should find that with all our modern appliances and natural advantages, the port charges were greater than other ports on the North Atlantic seaboard?

Recently the Board of Commissioners of the port of New Orleans engaged the well-known efficiency expert, Messrs. H. H. Davis and J. H. Davis, to make a comparative estimate of port charges at New Orleans, Galveston, Mobile, Philadelphia, New York and San Francisco on a vessel of a specified draft and tonnage with a specified cargo.

Owing to the marked differences in wharfage rates, dockage charges, etc., at the various ports a satisfactory comparison of port charges can only be made for a hypothetical ship and cargo.

Table with 2 columns: Description of vessel, cargo, etc. and corresponding charges. Includes items like 'Description of vessel', 'Time at public wharf', 'Time at private wharf', etc.

The following table shows the port charges computed on the above basis of fact and figures. It has been based on the hypothetical ship and cargo at the ports of Galveston, Mobile, Philadelphia, New York and San Francisco, in addition, the charges actually assessed at New Orleans under the present system of rates.

Table with 2 columns: Port and corresponding charges. Includes 'Philadelphia', 'New Orleans', 'Galveston', 'Mobile', 'San Francisco'.

This San Francisco may be eliminated altogether in this comparison, as it is not an Atlantic port, and very different conditions prevail on the Pacific.

THIS PORT CAN DO EVEN BETTER

No one can say that this report, made by independent experts, was intended to favor the port of Philadelphia. It was intended to show truthfully and based on hard-incontrovertible facts and figures. Experts connected with the port of Philadelphia who have examined this report, claim that the favorable showing for this city could be made still more so, that the figures for labor as far as this city is concerned are too high, and should be very materially reduced.

FINANCE MEMBERS GET WAGE BOOST APPEALS

Requests for \$3,000,000 Deluge Committeemen, Who Have \$821,227 to Distribute

With a surplus of \$821,227.45 and a balance available for appropriation of \$1,200,000, members of Council's Finance Committee were today besieged by city employees and their families anxious to have salary increase demands receive prompt attention.

Chairman Coffey, of the Finance Committee, cannot pass through the corridors of City Hall without being stopped by hundreds of men who are carrying on their friends anxious to present their requests for "more money." Daily these demands become more insistent and the fact that the city treasury has no money to distribute is making it impossible to grant them.

Recently the Board of Commissioners of the port of New Orleans engaged the well-known efficiency expert, Messrs. H. H. Davis and J. H. Davis, to make a comparative estimate of port charges at New Orleans, Galveston, Mobile, Philadelphia, New York and San Francisco on a vessel of a specified draft and tonnage with a specified cargo.

FINANCE MEMBERS GET WAGE BOOST APPEALS

Requests for \$3,000,000 Deluge Committeemen, Who Have \$821,227 to Distribute

With a surplus of \$821,227.45 and a balance available for appropriation of \$1,200,000, members of Council's Finance Committee were today besieged by city employees and their families anxious to have salary increase demands receive prompt attention.

Chairman Coffey, of the Finance Committee, cannot pass through the corridors of City Hall without being stopped by hundreds of men who are carrying on their friends anxious to present their requests for "more money." Daily these demands become more insistent and the fact that the city treasury has no money to distribute is making it impossible to grant them.

Man members of the Finance Committee are meeting in the public buildings in the hope of avoiding being drawn into any of the discussions, while others are contenting themselves with openly declaring their belief that all of the demands are unjustified and cannot be granted because sufficient money is not available, and it would not be fair to raise one set of wages and not another.

U. S. WILL RECOGNIZE FRENCH IN MOROCCO

Negotiations for American Approval of Protectorate Established in 1911 Reach Successful End

WASHINGTON, Jan. 15.—The United States will soon formally notify the French Government that it recognizes the French protectorate over Morocco. It was learned today, negotiations to that end have been conducted by Secretary of State Lansing and French Ambassador Jusserand for some time.

FIGHT SALOON SIDE ROOMS

SUNBURY, Pa., Jan. 16.—Declaring for the closing of side rooms permanently and of all bars at 11 o'clock at night, Northumberland County church people are preparing a petition that will be presented to the court when it meets to grant Northumberland County saloon permits on January 22, it is understood. This petition has hundreds of signers.

JESUITS HOLD MISSION AT ST. JOSEPH'S CHURCH

Morning and Evening Programs Arranged—Children From School Provide Music

ARRESTED IN HIS CELL ON NEW ACCUSATION

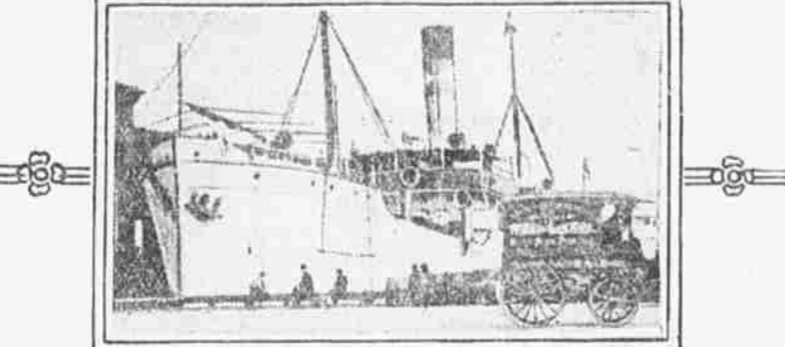
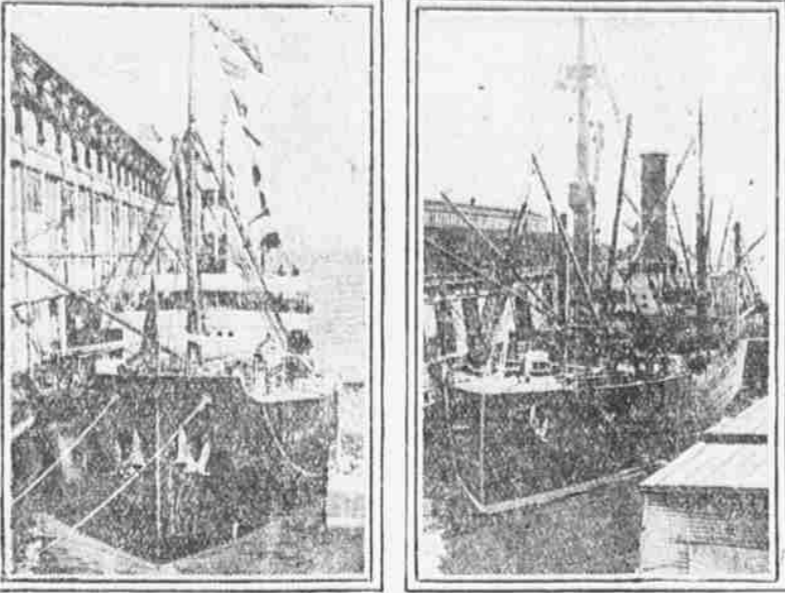
Prisoner Awaiting Extradition Faced With Charge of Swindling New Jersey Man

ATLANTIC CITY, N. J., Jan. 16.—A captive in default of \$2000 bail, awaiting extradition to Pennsylvania to answer a charge of selling worthless stocks to well-to-do residents of Norristown, C. S. Baker, fifty-six years old, a nattily dressed promoter, was arrested on a new charge this morning in his cell in the city prison.

Baker was stunned when a constable appeared at the grated door of his cell and told him he was wanted also for selling \$2000 worth of the stock of the Automatic Musical Company, a New York concern. It is said, to Sherman Bowen, one of the leading citizens of Minnetonka, a county, a prosperous glass town, where a great deal of boom money is said to have been invested in stocks of a doubtful variety.

Baker was taken before Magistrate Marta of Pleasantville, sitting in the City Hall Court, and was held in \$1000 bail to await trial on the charge preferred by Bowen, who is a member of the Grand Jury now sitting. This action means that Pennsylvania's claim to the prisoner will have to wait until that of New Jersey has been disposed of.

TYPES OF SHIPS ENTERING THIS PORT



At the top is an ocean freight and passenger liner. Below are two types of general cargo carriers which bear oil, fertilizer, coal, oil and manufactured goods to and from Philadelphia. At the bottom is a typical fruit ship bringing the products of Central America and the West Indies to this port for distribution.

Explosion in Factory Called Bomb Outrage

Continued from Page One

The police, however, are skeptical of this explanation. Detective Ralph Gold said he believed it was caused by a bomb and several policemen expressed the same opinion.

DEMOCRATS PLAN TAX TO RAISE \$525,000,000

Inheritance and Excess Profits Levy With Bond Issue New Revenue Scheme

WASHINGTON, Jan. 16.—Revenues, including bond issues, totaling \$525,000,000 will be raised by means of an additional inheritance tax, an excess profits tax of eight per cent on corporations and co-partnerships, and by bonds, Democrats of the House Ways and Means Committee decided today.

The decision has the approval of the President and Secretary of the Treasury, McAdoo.

Chairman Kitchin was authorized to draft a bill incorporating the decision.

PRINTER OF COAL PRICE CARD FOUND

M. J. McCullough Asserts He Did Work for "Exchange" Member

CONTAINED BOOST PRICES

M. J. McCullough, proprietor of a print shop at 1511 Federal street, printed the price cards which were distributed among many coal dealers prior to the December 20 advance of twenty-five cents in the retail price of coal.

McCullough said that the cards were ordered last fall by A. J. Cohn, a member of the Coal Exchange, and McCullough stated that when Cohn ordered the cards to be printed he said they were for the Coal Dealers' Association.

McCullough was questioned as follows by a representative of the Evening Ledger:

"Did you print some cards with coal prices last fall?"

ANOTHER DEALER GRILLED

Frank Mathers, a coal dealer at Washington avenue and Tenth street, accused of having left one of the cards in the office of Bald Brothers, 1220 Washington avenue, is a director of the Coal Exchange. He was questioned as follows regarding the card incident:

"Did you distribute those cards for the Coal Exchange, Mr. Mathers?"

"No, I did not."

"For whom did you distribute them?"

"I did not distribute any cards."

"How does it happen that you have one of those cards in your office?"

"That is my business card—a card to advertise my business and my price."

"But there is no name on the card; where did you get it, who printed it?"

attention the price of coal would be from fifty to seventy-five cents higher than the prices today.

PERMITS ELECTRIC CO. TO MERGE ITS HOLDINGS

Public Service Board Approves Plans to Consolidate Subsidiaries To Increase Bonds

The Philadelphia Electric Company is permitted to merge its fourteen subsidiary companies and proceed with its plan of financial readjustment, through a decision of the State Public Service Commission.

Santiago to Aid of Stranded Milwaukee

WASHINGTON, Jan. 15.—Admiral Caperton's flagship, the Santiago, has arrived at Eureka, Cal., to take command of the situation where the cruiser Milwaukee was ashore, the Navy Department announced today.

FRANK & SEDER ELEVENTH & MARKET STS. Additional Entrance from Eleventh St. Subway Station. The Season's Greatest 6-Hour Coat Sale. Offering such astonishing values and such magnificent styles that 2000 Coats will fairly fly out between 9 a. m. to 3 p. m. Wednesday. Your Choice of Coats Worth \$17.50 Up to \$30 at \$9.90.

FIAT At the Show. We invite your inspection of the new Fiat models—chasses, open and closed cars—lower, longer and more distinctive. Exhibited January 15 to 20 inclusive. Illustrated booklet on request. FIAT 1827 CHESTNUT STREET

DEWEEES Quality and Standard Famous Over Half Century. Announcing the Opening of a New Department for Smart Sports Hats. A CHARMING display of temptingly Stylish Hats for Southern Climes and early Spring wear. The shapes are fascinating and unusually becoming. Simple in style, Radiant in coloring. Made of new Peanut, Chrysanthemum, Pedal, Hinoki and Bangkok Braids and Straws.

MANN & DILKS 1102 CHESTNUT ST. Tyrol Wool Spring Suits In the New Light Colors. Ladies' and Misses' Suits and Top Coats are in Models here only. The Shades in the New High Light Colors Are Exclusive and Unusual.

Obituaries Joseph Elverson Joseph Elverson died yesterday at his home, 506 Linden street, Camden, N. J. He was a native of London, England, and came to this country when he was eight years old, settling first in Newark, N. J., but later moving to Camden. Mr. Elverson, who was eighty-two years old, was a hatter by trade. About fifty years ago he became connected with the business department of the Saturday Night, a popular periodical, and continued with it until its suspended publication. This, and later the Golden Days, were published by the late James Elverson, a brother of the deceased. Mr. Elverson for many years was a trustee of the Broadway Methodist Episcopal Church of Camden, and was superintendent of his Sunday school for twenty-five years. He had two children, Alice and J. Skelchey Elverson, of Catonsville, Pa., the latter surviving him. Mrs. Anna Lee Mrs. Anna Lee, of 12 Church lane, a well-known resident of Germantown, died at the home of her son, Henry W. Lee, 123 East Price street, Germantown, early yesterday morning. A short time before her mother died, Mrs. Lee was postmaster at the Mount Airy station, and continued with the Germantown Hospital with a severe attack of pneumonia. Mrs. Lee is survived by one son, Ivan Lee, and a daughter, Mrs. Henry Wagner. Mrs. Lee was a member of the A.M. Society of St. Vincent's Church, Germantown. The funeral will be held Thursday and interment will be made in the New Cathedral Cemetery.