



AFTER THE NEW JERSEY MUNITIONS EXPLOSION—GROUND STREWN WITH EXPLODED SHELLS



SHELLS THAT WERE BEING MADE FOR RUSSIA AT THE WRECKED PLANT



TRAFFIC OFFICER JOHN ARTMAN, AT CITY HALL, BELIEVES HE HAS COLDEST JOB IN TOWN

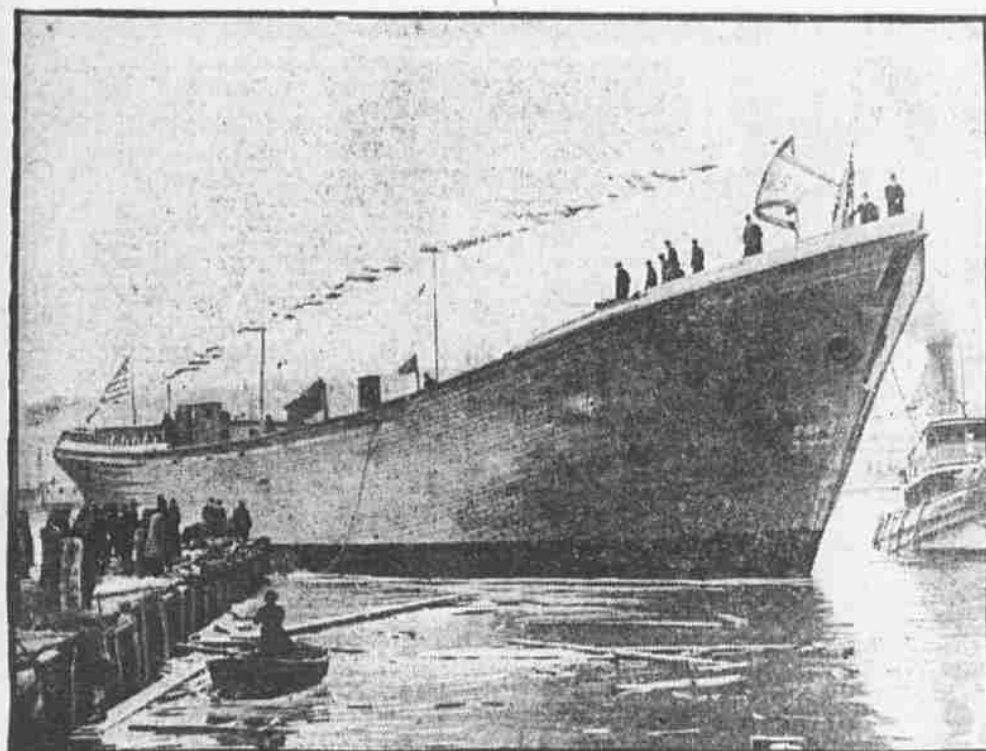


Photo by International Film Service.
 BOSTON SEES GREAT SQUARE-RIGGED BARKENTINE LAUNCHED.
 FIRST BUILT THERE IN TWENTY YEARS

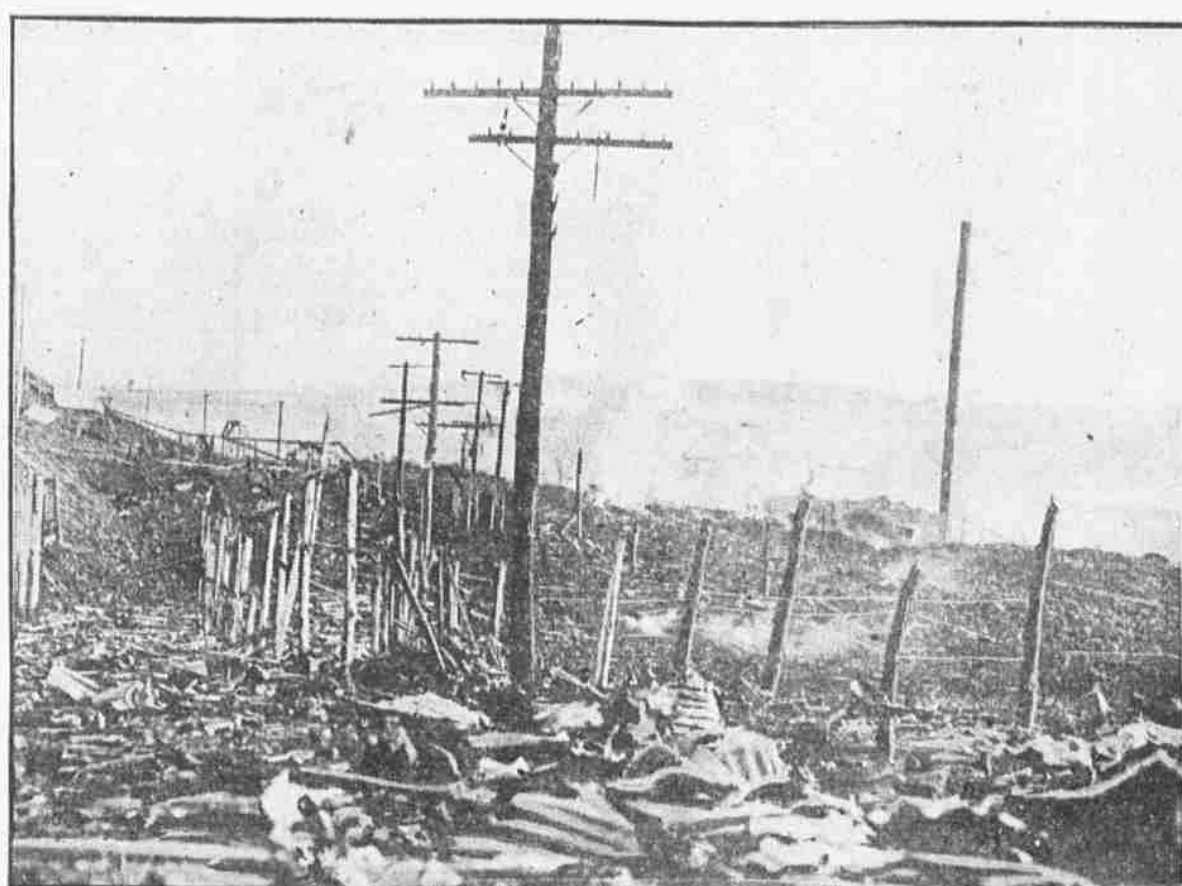
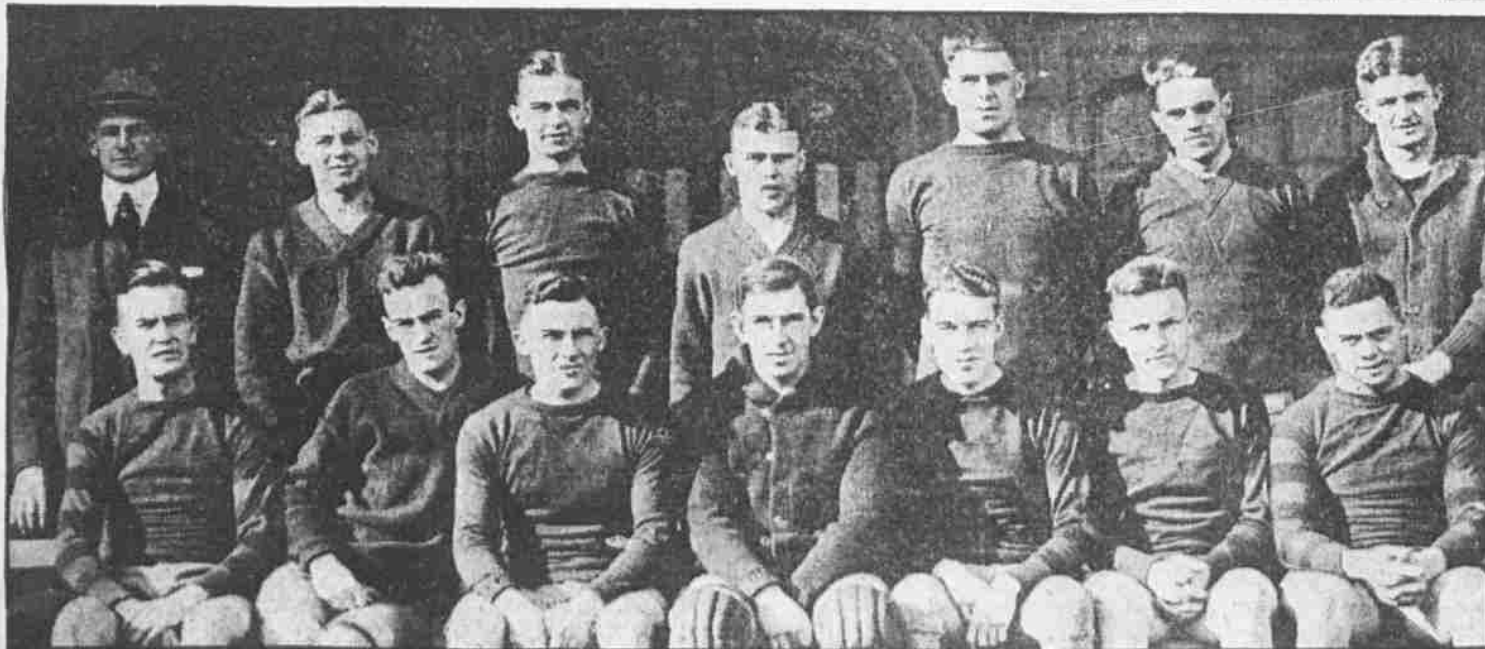


Photo by International Film Service.
 BARBED WIRE ENTANGLEMENT, BUILT TO
 KEEP OUT THE CURIOUS, WRECKED BY THE
 KINGSLAND BLAST



UNIVERSITY OF PENNSYLVANIA'S BASKETBALL SQUAD—CAPTAIN EDDIE McNICHOL IN THE CENTER BELOW



THOMAS D. SCHALL, BLIND CONGRESSMAN,
 ESCORTED FROM MINNESOTA TO THE
 CAPITAL BY HIS LITTLE SON



Photo by International Film Service.
 MISS ANNETTE ADAMS, WHO ASSISTED THE
 FEDERAL PROSECUTOR IN THE BOPP TRIAL AT
 SAN FRANCISCO



Photo by Chappell Studio.
 SERBIAN DAY, BY STEINLEIN, ONE OF THE WAR DRAWINGS IN THE FRENCH EXHIBITION AT THE ART CLUB



CECIL LEAN AND MISS CLEO MAYFIELD, OF
 THE BLUE PARADISE COMPANY, TRY THE ICE
 ON CONOURSE LAKE