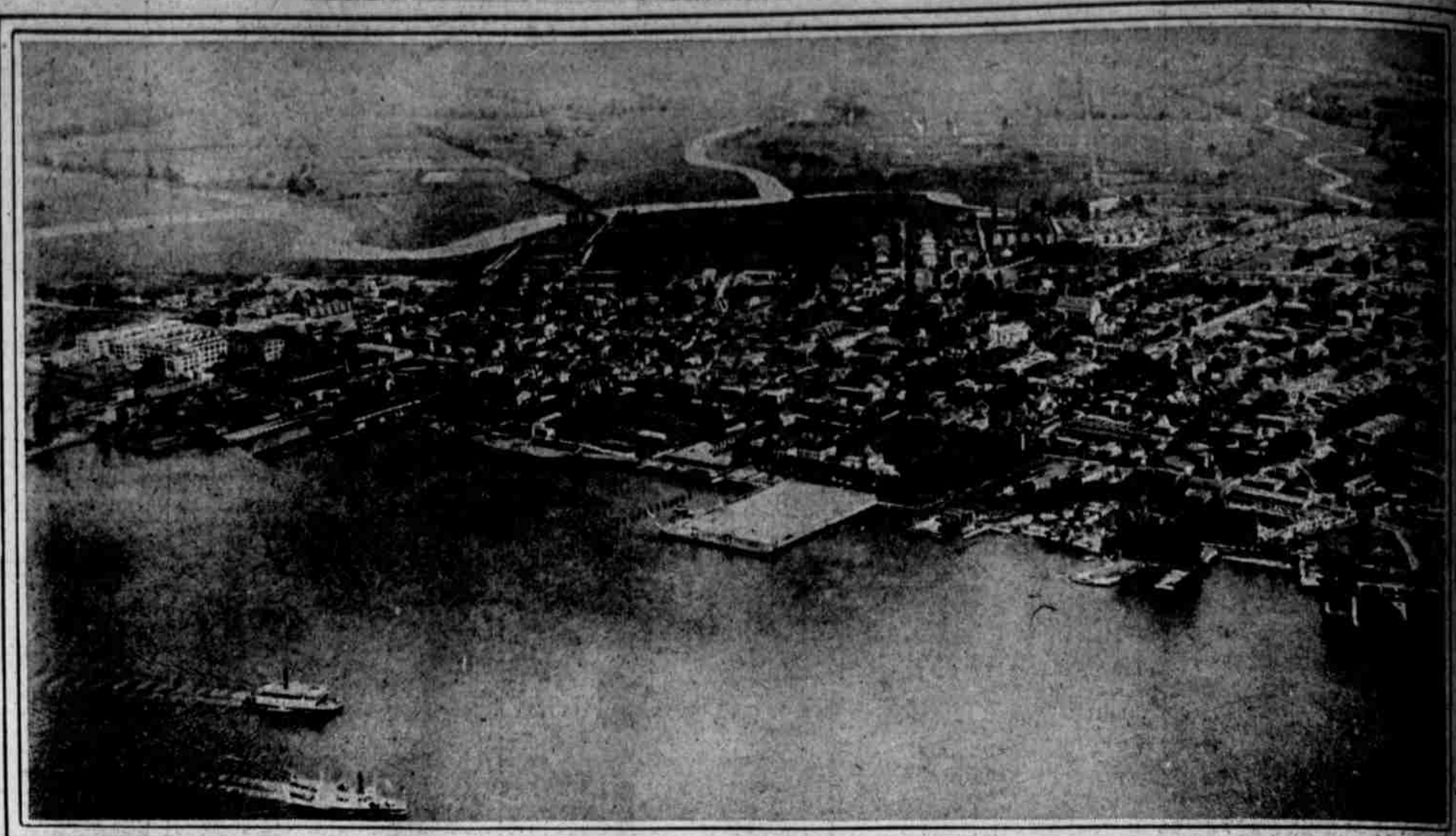
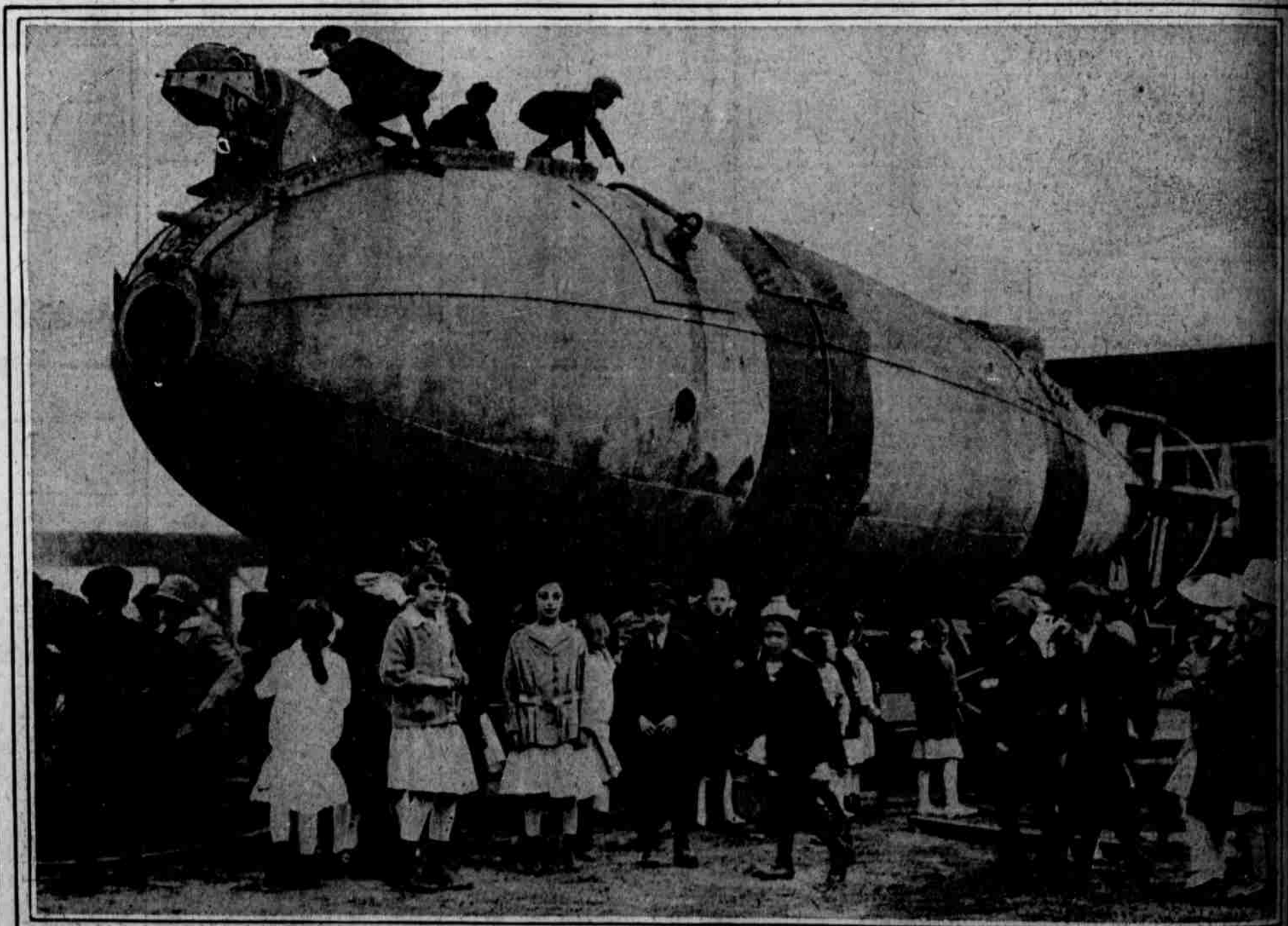


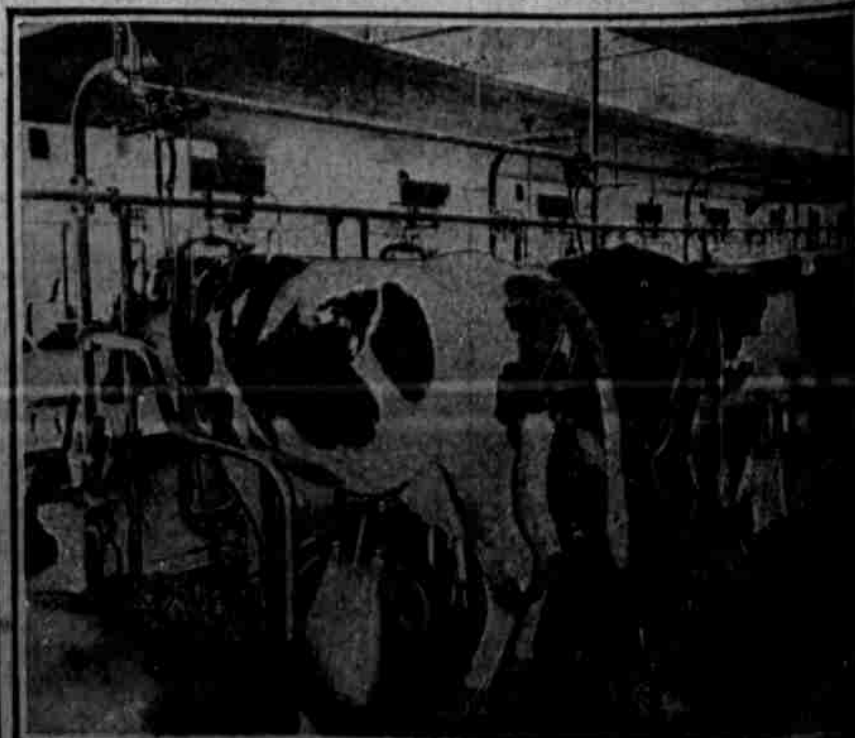
**THE CANYONS OF PHILADELPHIA**  
 The second of the series of photographs being reproduced on this page shows narrow Juniper street, looking north, from the top of the Witherspoon Building, Juniper and Walnut streets



**GLOUCESTER CITY, N. J., CAMDEN'S BUSY SUBURB, SEEN FROM AN AEROPLANE**  
 The photograph shows the administration offices of the New York Shipbuilding Company at the extreme left, the United States Immigration Station, with the detention building, in the center, and the Gloucester City ferry dock at the extreme right. Between the first two groups of buildings are the works of the Welsbach Company.



**OLD SUBMARINE PROVES A HARMLESS TOY FOR SCHOOL CHILDREN**  
 Children of the McCall School paid a visit to the submarine Holland, the first sub-sea craft in the United States Navy. The Holland is reposing, like a stranded amphibian, in the empty lots opposite Franklin Field before it goes to the Irish bazaar, in New York.



**INCREASED COST OF MILK BRINGS VIVIDLY BEFORE THE PUBLIC THE DIFFERENCE BETWEEN THE OLD AND THE MODERN MILEMAID**  
 The photograph at the left shows how farmers' daughters and wives went from farm to farm collecting two or three forty-gallon cans of milk to be taken to the city in the old-fashioned donkey backboard. In the center is the Twentieth Century method. The milkman's horse-drawn wagon, at a 6 o'clock every morning, goes to Elmer, N. J., gets nine-to-sixty quart cans of milk and returns to the city by 3 o'clock in the afternoon. While covering the sixty-nine miles the vehicle collects milk en route. At the right is the modern, scientific method. Three milking machines get the milk from a herd of forty cows in one hour and forty minutes, with an average yield of fifty-five pounds from each Holstein.