

CHESTER GROWS LIKE SCHOOLBOY; TREBLES WEALTH

Population of 38,000 Doubles in Decade—Investments Reach \$72,000,000

WAR ONLY ONE FACTOR

Industries Are Permanent and No Depression Will Follow Peace Treaty

Chester, the oldest city in Pennsylvania, is forging rapidly forward on the crest of one of the greatest industrial development waves ever experienced by an American city.

Most important of all is the fact that Chester's growth has not been ephemeral, born only of the European war boom, but has been steady, continuous and consistent.

The Chester section is that strip of land on the western bank of the Delaware River between Crum Lynne and Marcus Hook.

FIGURES SHOW GROWTH

The remarkable growth during the last decade is strikingly shown by the following approximate figures given by the Chester Chamber of Commerce:

Table with 3 columns: Year, Population, Industrial wealth. Shows growth from 1906 to 1916.

The population during the last decade has virtually doubled, but at the same time the industrial wealth, the money invested in industry, has been more than trebled.

As the signs of a panic disappeared the growth began with a new stride. And then came the world war in 1914, when the Allies turned to America for ammunition, guns, steelwork, locomotives and all other articles of war use.

New enterprises were started on every hand, established plants worked feverishly in extending their facilities to take care of the ever-growing trade, both domestic and foreign.

The Baldwin interests, embracing the Baldwin Locomotive Works, the Remington Arms and the Eddystone Ammunition Companies, now employ 27,000 workmen, of which the locomotive works alone have 10,000.

Among the other big industrial establishments in the Chester region are the plants of the American Dyewood Company, the General Chemical Company, the Consolium Company, the Eddystone Manufacturing Company, the Penn Seaboard Steel Corporation, the Tidel-Morris Company, the Belmont Iron Works, the South Chester Tube Company, the Delaware River Steel Company, the Chester Shipbuilding Company, the Robert Wetherill Company, the Aberfoyle Manufacturing Company, the Commercial Box and Envelope Company, the O. W. Ketchum Company and the Sun Shipbuilding Company.

The last-named concern was incorporated recently for \$5,000,000, and more than \$2,500,000 is being expended for the construction of the new plant, which will be equipped to build standard-cargo ships up to 600 feet in length and 58 feet beam. The plant will be ready to begin work about October 15.

A survey of the industries in the Chester section leads one through the whole range and gamut of industries. There is the steel castings industry, for instance, growing in importance each year and giving employment to thousands; the shipping industry, in its infancy yet, but growing with such rapidity that it promises to outgrow the locomotive industry within a few years; the textile industry, the oil industry, the dye industry and so on throughout the entire long list.

In the manufacture of locomotive, marine and miscellaneous castings the Chester region leads the world, the plants engaged in their manufacture in this section having an aggregate annual output of no less than 100,000 tons.

The first steel castings in America were made at Chester 25 years ago, at the plant of the Penn Steel Castings and Machine Works, now a part of the Penn Seaboard Steel Corporation, which stands on the historic site of Penn's landing in America on October 24, 1638.

The chief steel casting plant of the Chester region is the Penn Seaboard Steel Corporation, representing a consolidation of the Penn Steel Castings and the Seaboard Steel Castings companies. This plant, with its blast works, further down the river, has a capacity of approximately 9000 tons a month, these castings ranging in weight from an ounce to a hundred tons.

This is not the extreme limit as to weight, either; in fact, some years ago there was turned out at this plant a platen for the Camden Iron Company that weighed 125,000 pounds.

The Penn Seaboard Steel Corporation's plant is the largest in the East. It has a total floor space of 190,000 square feet. One of the features is a fireproof storage shed, where all patterns are numbered, staked, boxed and stored, and connected therewith is a pattern shop, where patterns are executed to order from submitted designs and sketches.

for the battleship Utah, the first stem ever cast in a single piece, whether here or abroad.

But as important as is steel casting to the industrial life of this rapidly growing section of the Keystone State, it is by no means the only branch of the great steel industry that is being comprehensively developed.

At the plant of the Tidel-Morris Company, for instance, are produced, on an extensive scale, steel forgings of every character, with a range of weight of from 10 to 45,000 pounds.

IMPROVED STEEL CYLINDERS. A recent departure of the Tidel-Morris Company is the manufacture of steel cylinders for the conveying of high-pressure gases, such as carbonic acid gas, oxygen and hydrogen, and cylinders for the storage of liquefied gases for lighting system, and air flasks for submarines, these cylinders being made under the Tidel-Morris rolling process, which, while somewhat similar to that used by the German Erhardt system, upon the German Erhardt system.

In the plant of the Belmont Iron Works, Chester possesses its only establishment for the fabrication of steel for bridges and buildings. This plant is situated at Eddystone and covers some ten and one-half acres of ground. Its buildings, all commodious and of the latest design, comprise beam, pattern, main bridge, rivet making and machine shop, powerhouse and office.

At this plant is being fabricated the steel for the Sun Shipbuilding Company's plant and for the new office buildings now in course of construction at Fifteenth and Locust streets and Sixteenth and Walnut streets, Philadelphia.

The development of the pre-smelting industry has not been perfected in the Chester region on a very considerable scale to date, but its single blast furnace is prospering mightily at present. This plant is the property of the Delaware River Steel Company, whose present name is rather a misnomer, for it has no activity other than the smelting of iron ore.

Wrought-iron pipe used in the drilling of natural gas and oil, the piping of gas and oil, the sinking of artesian wells, the construction of ammonia plants and for a myriad other purposes is manufactured on a very large scale by the South Chester Tube Company, which has an annual output of about 60,000 tons a year.

WIDE FIELD FOR IRON PIPES. Chester wrought-iron pipe finds a wide field. The great pipe line that conveys the gas from the Caddo, La., field to Texas, for example, was made in Chester, and it has played an important role in the development of the oil fields both of this country and of Mexico. The plant employs about 700 men.

As great as has been the development of the steel and allied industries, Chester's textile industries have not suffered in comparison. Her mills embrace cotton and woolen, lace and other, the more important branches of the spinning and weaving trades, and the operatives employed run into the thousands. The cardinal need of the industry at the moment is labor, both skilled and unskilled, especially weavers.

In the plant of the Aberfoyle Manufacturing Company, Chester possesses one of the leading novelty textile mills in the United States, its products competing with those of the foremost mills of Europe. These products consist of high-grade shirtings and dress goods, woven from cotton yarn, silk and artificial silk and mercerized yarns for use in the manufacture of hosiery, underwear, sweaters, garters, telephone cords, gas mantles and other knitted fabrics.

This is one of the few mills in the country that have attempted to produce a really fine-grade fabric. The first mill in the country to utilize artificial silk—importing it from England before it was manufactured on this side of the Atlantic—the Aberfoyle Manufacturing Company now has no fewer than 150 of its looms weaving cloth.

With an investment of \$2,000,000 and some 1500 employees, this plant is the largest of its kind in America.

BIG SHIPPING CASE PLANT. In the plant of the Commercial Box and Envelope Company, Chester has one of the largest plants for the manufacture of solid fiber shipping cases, cartons, folding boxes and envelopes in the East. The plant covers some 17 acres of ground and has a water frontage of 700 feet. It has seven buildings, equipped with the most modern machinery. The plant makes its own plates, and does all of its own printing. It is the purpose of the company to erect a large paper mill on the property for its own use. At the present time the capacity of the plant is being approximately doubled.

At the plant of the O. W. Ketchum Company, near Crum Lynne, is produced on an extensive scale every character of architectural terra cotta, a material that in the last few years has become indispensable to the American builder.

NEAR RIOT AT CITY HALL. More Than Hundred Laborers Demand Delayed Pay From Director Datesman. A gang of more than a hundred workmen stormed the office of Director Datesman at City Hall today and demanded the pay due them for work at the pumping station of the Bureau of Water. The corridors resounded with threats, and for a time things looked serious.

Finally they learned that a paymaster had started with the month's wages, but the breaking down of his automobile prevented him from reaching Otis street wharf where the men are a ways paid.

Finally the tardy paymaster arrived at City Hall in a taxicab and was cheered when the men received their money.

Men Taken in Poolroom Raid Freed. The men arrested when police raided Joseph Ferrotte's poolroom have been discharged by Magistrate Beaton for lack of evidence. Captain Kenny commanded the raid and said at the time that the police had information that New York "gunmen" were there planning a big hold-up.

Baltimore Closes Playgrounds. BALTIMORE, Aug. 27.—All the city playgrounds, between 30 and 40 in number, have been ordered closed by the health authorities as a measure of precaution to prevent infantile paralysis from becoming epidemic in Baltimore.



ANOTHER AUTO VICTIM. Robert H. Warden, 10 years old, 1514 Ridge avenue, struck and killed by an automobile at Broad and Cherry streets.

ONE DEAD, EIGHT INJURED FROM DAY'S AUTO MISHAPS

82 Fatalities Since January 1—Six This Month—Boy Killed After Parade

Eight persons are recovering from motorcar injuries today and arrangements are being made for the funeral of Robert Warden, 10 years old, of 1514 Ridge avenue, who died in the Hahnemann Hospital when struck by an automobile at Broad and Cherry streets.

The boy, according to the police, attempted to cross Broad street after the last section of the parade of the Patriotic Sons of America had passed and in the jam ran in front of the running board of an automobile. George Carrick, 3909 Spring Garden street, the driver of the machine, was held to await the action of the Coroner. This makes 82 motorcar fatalities since the first of the year and six since the first of the month.

The victims in most cases have been young children and aged persons. Charles L. Hutchinson, of Llanerch, was taken to the Bryn Mawr Hospital with three broken ribs as the result of a head-on collision between two touring cars on Eagle road, Llanerch, yesterday. Three other occupants of the car were treated by a physician.

Four men were injured when a large touring car crashed into a pole at Broadway and Benson street while carrying a patient to the Cooper Hospital, Camden. Louis Tian, 30 years old, of 130 Christian street, Philadelphia, who was the patient, is recovering. The others were able to leave the hospital after treatment.

HARD LUCK JINX PURSUES HIM. Candy Store Proprietor, Twice Visited by Burglars, Now Has \$1000 Fire. A fire early today in the home of John Lauber, who lives with his family above his candy store at Sixty-third street and Saybrook avenue, is the third stroke of hard luck Lauber has had this year.

On February 7 burglars stole \$260 in cash from him. On May 30 two men entered while Mrs. Lauber was in the store alone, and when she refused to give them money beat her badly. Her screams brought aid and the men fled. Today's fire caused damage of \$1000.

Mrs. Lauber and a 12-year-old daughter were saved by neighbors, Samuel Miller and William Earle, who climbed fences and sheds to get to a second-story window and lift the mother and daughter out. Lauber, who went downstairs to fight the flames, was badly burned. Earle, too, was hurt in a fall.

An alarm was turned in by a motorman, who raced his car to the Sixty-fifth street and Woodland avenue station house.

POSIZIONI NEMICHE A 2300 METRI PRESE DA LE FORZE DI CADORNA

La Russia Ammassa Un Esercito sui Confini della Rumania per Attaccare la Bulgaria

TRA BULGARI E GRECI

ROMA, 25 Agosto. Il Ministero della Guerra pubblica un rapporto del generale Cadorna nel quale sono annunziate nuove vittorie delle armi italiane. Gli austriaci hanno attaccato violentemente le posizioni italiane al Passo di Vall'Inferno, ma sono stati respinti. Ecco il testo del rapporto:

Nelle Alpi di Fassa una densa nebbia ha ostacolato l'attività della nostra artiglieria.

Non abbiamo fatto ulteriori progressi sulle falde del Monte Cauroli ed abbiamo ancora il nemico a quarantina di prigionieri.

Nell'alta Val Degano e nella valle del Goria e in quella del Carso. Gli austriaci bombardano di nuovo Gorizia ed i ponti sull'Isonzo.

Ecco il testo del rapporto di ieri del generale Cadorna circa la situazione alla fronte, italo-austriaca:

Piccole operazioni offensive da parte delle nostre truppe ci hanno dato il possesso di alcune nuove posizioni nella selvaggia area montuosa della Alpi di Fassa.

Alla testata della valle di Fosserrica noi abbiamo occupato la Quota 2354, a sud di Cima di Cece. Con un violento contrattacco il nemico riuscì a riprendere questa posizione, ma poco dopo ne fu di nuovo e definitivamente cacciato dalle nostre truppe.

Alla testata della valle di Cima alcuni reparti della nostra truppa alpina conquistarono trincee nemiche sulle falde del Monte Cauroli ed a Cima di Cupola.

Sul resto della fronte di battaglia si sono avute azioni intermittenti di artiglieria.

Si rapporta attività da parte del nemico di Cima di Cocco, in ricognizione. Durante un volo su Gorizia una delle nostre macchine Nieuport abbatté un aeroplano nemico che si incendiò e cadde nelle vicinanze di Ranzano.

Il generale Cadorna ha spinto le sue avanguardie fino a 14 miglia da Trieste e a poco a poco avanza sul difficile terreno montuoso dove gli austriaci si attaccano alle loro posizioni con la più grande tenacia.

Nelle ultime 24 ore, scrive un corrispondente della fronte di battaglia, ho visitato la zona dell'Isonzo a sud di Gorizia fino a Montafalcone. A sud-est della città gli italiani hanno conquistato la seconda linea delle trincee austriache ed in alcuni punti sono penetrati fino alla terza linea. Per molti giorni è continuato l'uragano di granate in questa zona.

Montafalcone, come tutti gli altri villaggi del Carso, è stato quasi distrutto dal fuoco delle artiglierie. Nelle vicinanze della città un prosciutto di 16,000 tonnellate, che era stato costruito per fare viaggi tra New York ed i porti austriaci, e tre torpediniere sono stati ridotti a pezzi.

L'altopiano del Carso è tutto rotto da crateri formati da granate. Trincee austriache sconvolte, resti di rottolati di ferro, cadaveri e carogne si incontrano dappertutto. Grossi frammenti di rocce, divelti dai proiettili di artiglieria nel bombardamento che precedette la conquista di Monte San Michele e di San Martino, si incontrano nei crateri scavati dalle granate e pieni di cadaveri, come immense tombe.

Le linee di trincee degli avversari sono così vicine le une alle altre sul Carso, che i soldati devono essere costantemente in guardia di giorno per evitare i colpi dei tiratori di fanteria.

Telegrammi da Parigi dicono che i francesi hanno conquistato nuove trincee a nord di Peronne, che è il loro obiettivo da alcune settimane, ed hanno occupato interamente il villaggio di Maurepas. Ciò mostra che l'offensiva degli anglo-francesi è tutt'altro che cessata mentre comincia una poderosa offensiva degli alleati nella Penisola balcanica.

Ivi in situazione va divenendo sempre più interessante, specialmente per quanto riguarda la Rumania e la Grecia.

Ieri un telegramma da Atene diceva che, in seguito ad ordini perentori pervenuti da Atene il comandante della guarnigione greca di Seres si era ritirato in direzione sud per non opporre resistenza alle truppe bulgare che, avendo occupato Demitrisar, si preparavano a marciare su Seres. Oggi invece si apprende che quel comandante è tuttora in Seres, non solo, ma che i volontari greci accorrono ad arruolarsi per combattere contro i bulgari, eterni nemici del ellenismo. E' probabile però che ordini siano realmente partiti da Atene per il ritiro della guarnigione di Seres e che il comandante non vi abbia dato peso.

French Dramatist Is Commended. PARIS, Aug. 25.—Lieutenant Henri Bernstein, of the aviation corps of the French army, was today cited in an order of the day for valiant services on the Macedonian front. Lieutenant Bernstein distinguished himself in reconnoitering duty and raids. Bernstein's exploits achieve additional interest from the fact that he once deserted from the French army. Afterward he fought a duel with Leon Daudet, son of the author of "Sappho." He is one of the foremost playwrights in France.

Address Market Square CHESTER, PA.

Homes, Factory Sites and Residence Property for sale in Chester and adjoining boroughs. Manufacturers seeking ideal locations in this rapidly developing section will profit by communicating with us.

Address Market Square CHESTER, PA.

Address Market Square CHESTER, PA.

Address Market Square CHESTER, PA.

Address Market Square CHESTER, PA.

del Carso, è stato quasi distrutto dal fuoco delle artiglierie. Nelle vicinanze della città un prosciutto di 16,000 tonnellate, che era stato costruito per fare viaggi tra New York ed i porti austriaci, e tre torpediniere sono stati ridotti a pezzi.

L'altopiano del Carso è tutto rotto da crateri formati da granate. Trincee austriache sconvolte, resti di rottolati di ferro, cadaveri e carogne si incontrano dappertutto. Grossi frammenti di rocce, divelti dai proiettili di artiglieria nel bombardamento che precedette la conquista di Monte San Michele e di San Martino, si incontrano nei crateri scavati dalle granate e pieni di cadaveri, come immense tombe.

Le linee di trincee degli avversari sono così vicine le une alle altre sul Carso, che i soldati devono essere costantemente in guardia di giorno per evitare i colpi dei tiratori di fanteria.

Telegrammi da Parigi dicono che i francesi hanno conquistato nuove trincee a nord di Peronne, che è il loro obiettivo da alcune settimane, ed hanno occupato interamente il villaggio di Maurepas. Ciò mostra che l'offensiva degli anglo-francesi è tutt'altro che cessata mentre comincia una poderosa offensiva degli alleati nella Penisola balcanica.

Ivi in situazione va divenendo sempre più interessante, specialmente per quanto riguarda la Rumania e la Grecia.

Ieri un telegramma da Atene diceva che, in seguito ad ordini perentori pervenuti da Atene il comandante della guarnigione greca di Seres si era ritirato in direzione sud per non opporre resistenza alle truppe bulgare che, avendo occupato Demitrisar, si preparavano a marciare su Seres. Oggi invece si apprende che quel comandante è tuttora in Seres, non solo, ma che i volontari greci accorrono ad arruolarsi per combattere contro i bulgari, eterni nemici del ellenismo. E' probabile però che ordini siano realmente partiti da Atene per il ritiro della guarnigione di Seres e che il comandante non vi abbia dato peso.

French Dramatist Is Commended. PARIS, Aug. 25.—Lieutenant Henri Bernstein, of the aviation corps of the French army, was today cited in an order of the day for valiant services on the Macedonian front. Lieutenant Bernstein distinguished himself in reconnoitering duty and raids. Bernstein's exploits achieve additional interest from the fact that he once deserted from the French army. Afterward he fought a duel with Leon Daudet, son of the author of "Sappho." He is one of the foremost playwrights in France.

Address Market Square CHESTER, PA.

Homes, Factory Sites and Residence Property for sale in Chester and adjoining boroughs. Manufacturers seeking ideal locations in this rapidly developing section will profit by communicating with us.

Address Market Square CHESTER, PA.

Address Market Square CHESTER, PA.

Address Market Square CHESTER, PA.

Address Market Square CHESTER, PA.

Address Market Square CHESTER, PA.

Address Market Square CHESTER, PA.

Address Market Square CHESTER, PA.

Address Market Square CHESTER, PA.

Address Market Square CHESTER, PA.

Address Market Square CHESTER, PA.

Address Market Square CHESTER, PA.

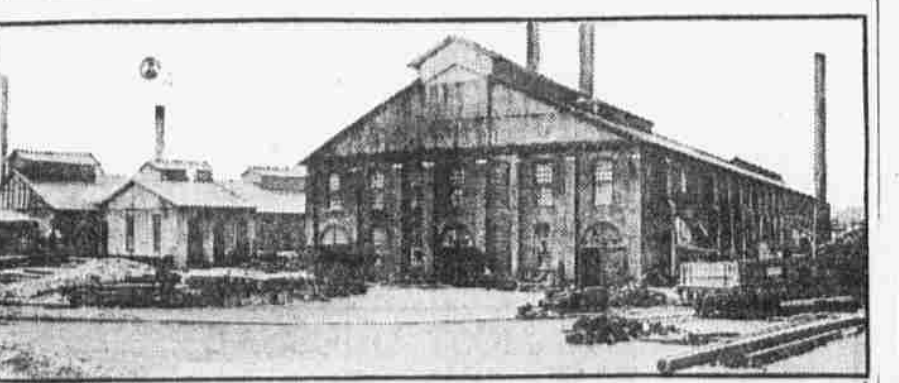
Chester Needs More Houses. Chester Shipbuilding Co. Chester, Pa.

BELMONT IRON WORKS. FABRICATORS OF STRUCTURAL STEEL. Philadelphia, Pa. Eddystone, Pa.

This is the Largest Factory of Its Kind in the World. Commercial Box & Envelope Co. Solid Fiber Shipping Cases, Folding Cartons and heavy Mailing Envelopes made to any required dimensions.

Commercial Box & Envelope Co. HEAD OFFICE, CHESTER, PA. PHILADELPHIA OFFICE 133 South 12th Street

Perfection Motor Oil. CREW LEVICK. "As Old as the Industry". Pennsylvania Gasoline. Land Title Building, Philadelphia, Pa.



PARTIAL VIEW OF OUR PACKING HOUSE

PORK AND BEEF PACKERS. JOHN T. BUCKLEY CO., Inc., Chester, Pa.

South Chester Tube Co. Chester, Pennsylvania. Manufacturers of WROUGHT IRON LINE PIPE : TUBING : CASING AND MERCHANT PIPE. New York Pittsburgh Chicago San Francisco

Delaware River Steel Company. MANUFACTURERS OF PIG IRON. Chester, Pa.

Delaware River Steel Company. Chester, Pa.

ABERFOYLE MANUFACTURING COMPANY. DYERS, BLEACHERS, GASSERS. DYERS OF COLORS FAST TO SUN AND BLEACHING. MERGERIZED YARNS. Our Yarns are the Products of American Mills. MAIN OFFICE CHESTER, PA. 402 MORRIS BUILDING PHILADELPHIA. 746 INSURANCE EXCHANGE CHICAGO.