



ILLUSTRATED Evening Ledger

FRIDAY
August 11, 1916

GRAPHIC NOTES AND COMMENT ON THE VARIED NEWS OF THE DAY AS RECORDED BY THE CAMERA



Coat of yellow and black wool velour, seal trimmed, with shoulder cape on oblique seam.

Suit of dark brown wool velour, self-material belt and scarlet collar.

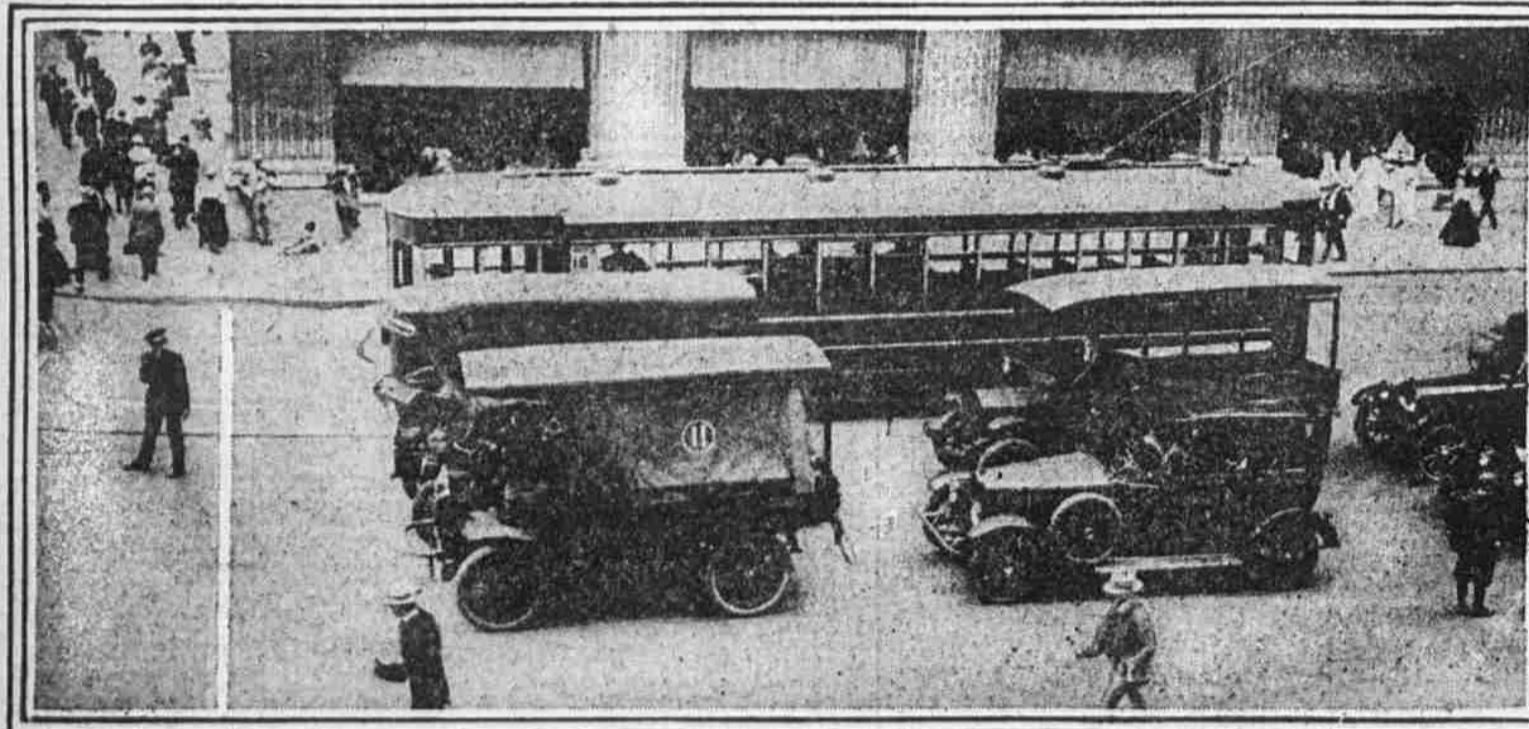
Suit of Burgundy velvet, trimmed with beaver, with raised waistline.

Jacket with pin-tucks, set in under arms, introducing fullness into sides.

Long-suit jacket of dark green satin, trimmed with gray rabbit for winter wear.

Photos by Underwood & Underwood.
Brocaded turquoise blue charmeuse, with extra wide collars and cuffs of gray wolf.

A SURVEY OF WHAT'S NEW AND NATTY IN FEMINE FASHIONS FOR THE FALL—THEY ARE ALREADY ON DISPLAY



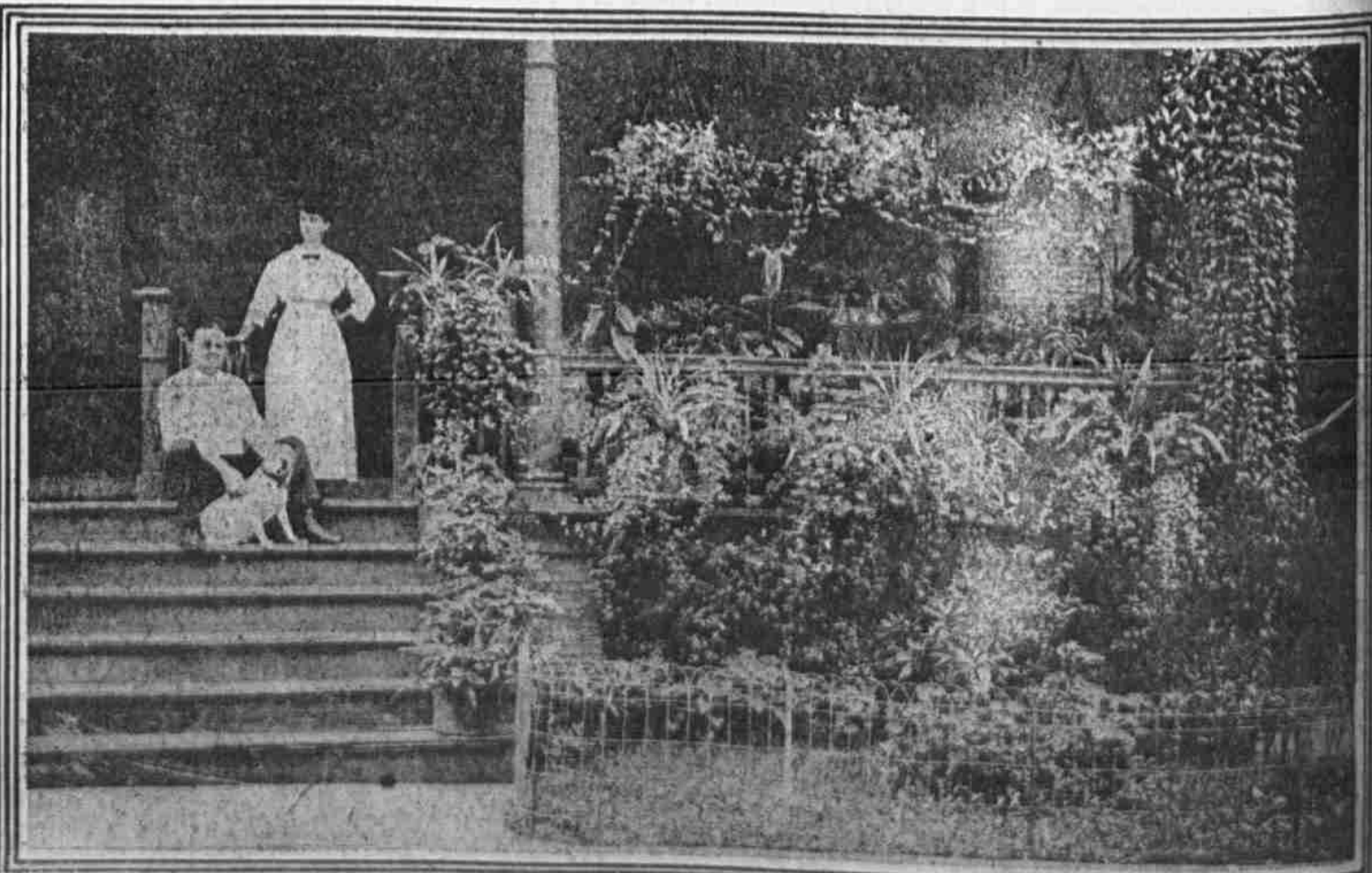
NEW SAFETY LINES FOR PEDESTRIANS PAINTED ON STREETS AROUND CITY HALL



STUDYING AERIAL MECHANICS AT THE ATHLETIC RECREATION CENTER



SCIENTIFIC FENCE-SCALING CLASS AT THE ATHLETIC CENTER



MR. AND MRS. JACK MAIER, OF FARRAGUT TERRACE, CREATE THEIR OWN "HOME BEAUTIFUL"