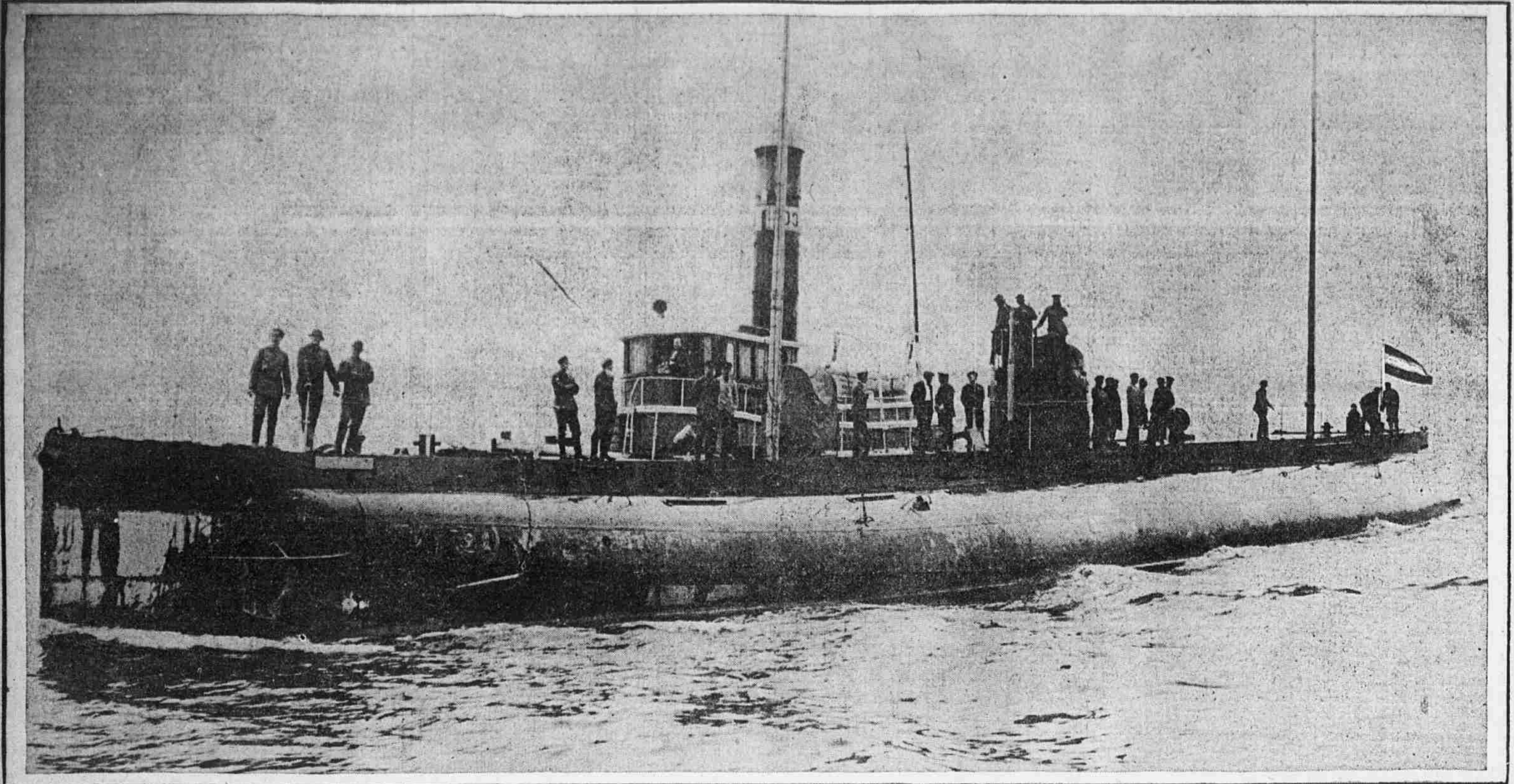


MONDAY
July 10, 1916

ILLUSTRATED
Evening Ledger

MONDAY
July 10, 1916

THE GERMAN SUPERSUBMARINE'S SENSATIONAL ARRIVAL AT BALTIMORE CHRONICLED IN PICTURES



GERMAN SUBMARINE, THE DEUTSCHLAND, COMING UP CHESAPEAKE BAY TO BALTIMORE EARLY THIS MORNING, TRIUMPHANTLY COMPLETING A VOYAGE OF 4100 MILES ACROSS THE ATLANTIC
The big U-boat is conveyed by the motortug Elco, of the North German Lloyd Line, whose captain was the first to sight the lights of the undersea craft as they hung from the high masts, which are clearly shown in the picture. Members of the crew, which successfully brought the submersible liner across the ocean, appear standing on deck.



STERN VIEW OF THE NEW SUBMARINE MERCHANTMAN, SHOWING HER BULGING UNDERWATER BODY, AND HER COMMANDER, CAPTAIN KOENIG
This view of the craft shows how she is built so as to provide roomy cargo space beneath her narrow superstructure. She is in tow of the tugs Elco and Timmins. The other picture shows her skipper, in his naval cap and sou'wester, standing beside Captain Hinsch, of the Baltimore company organized to handle the Deutschland's cargo. Photos by Harry Hood, Staff Photographers.