

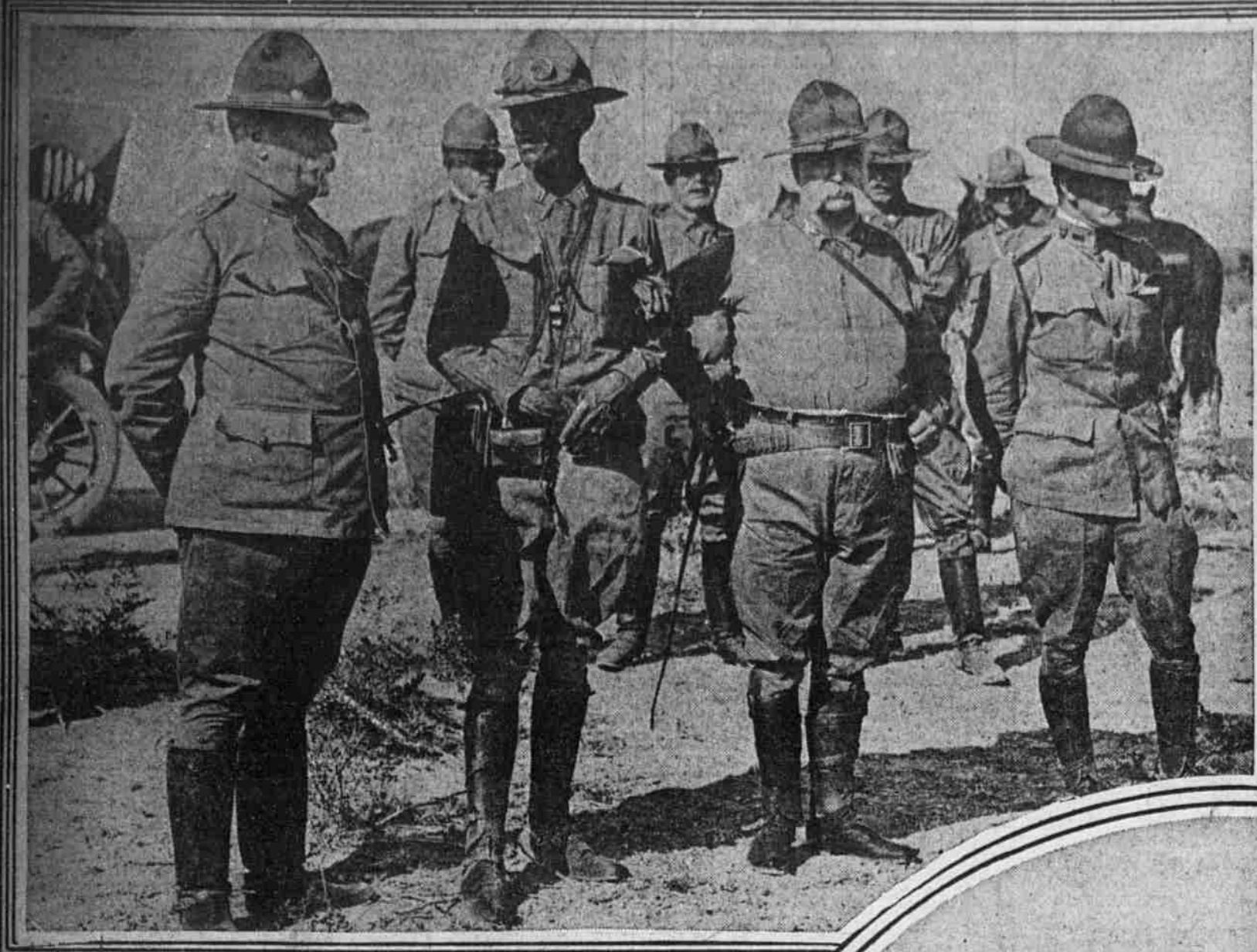


ILLUSTRATED

# Evening Ledger

SATURDAY  
July 1, 1916

GRAPHIC NOTES AND COMMENT ON THE VARIED NEWS OF THE DAY AS RECORDED BY THE CAMERA



Copyright, International Film Service.

GENERAL GEORGE BELL, CAPTAIN KELLY, TROOP H, 8TH UNITED STATES CAVALRY, AND COLONEL CHARLES W. TAYLOR, OF THE 8TH CAVALRY, ARE THE CHIEF UNITED STATES COMMANDERS AT EL PASO

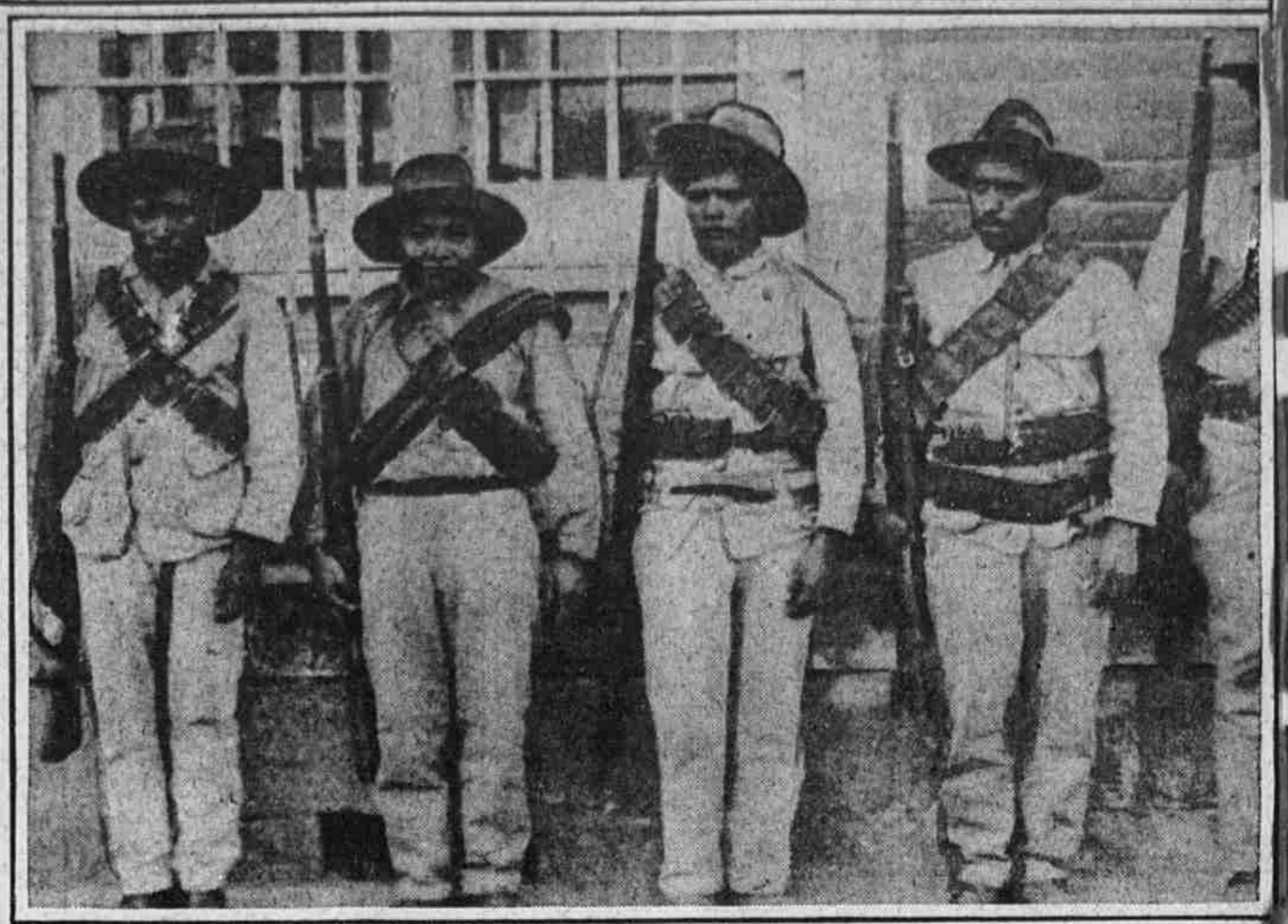


Photo by Evening Ledger-Universal Animated Weekly.

DIMINUTIVE DEFENDERS OF THEIR COUNTRY WHO WILL FACE PENNSYLVANIA TROOPERS FROM ACROSS THE RIO GRANDE



Copyright, International Film Service.

THE LEWIS MACHINE GUN, WHICH THE BRITISH CALL THE "BELGIAN RATTLESNAKE," WILL BE USED AGAINST THE MEXICANS IF NECESSARY



Copyright, International Film Service.

VIEW SOON TO BE UNVEILED BEFORE THE EYES OF PHILADELPHIA GUARDSMEN WHEN THEY ARRIVE AT EL PASO



Copyright, Underwood & Underwood.

CHARLES EVANS HUGHES, 3D, GRANDSON OF THE REPUBLICAN CANDIDATE FOR PRESIDENT OF THE UNITED STATES



Copyright, International Film Service.

MEXICANS IN THE DUSTY HILLS OF SALTILLO, NEW MEXICO. COLOR BEARER, THIRD FIGURE ON HORSEBACK



Small French War Photo.

WHAT FRENCH SOLDIERS PROUDLY CALL THEIR "AMERICAN BOARDWALK"