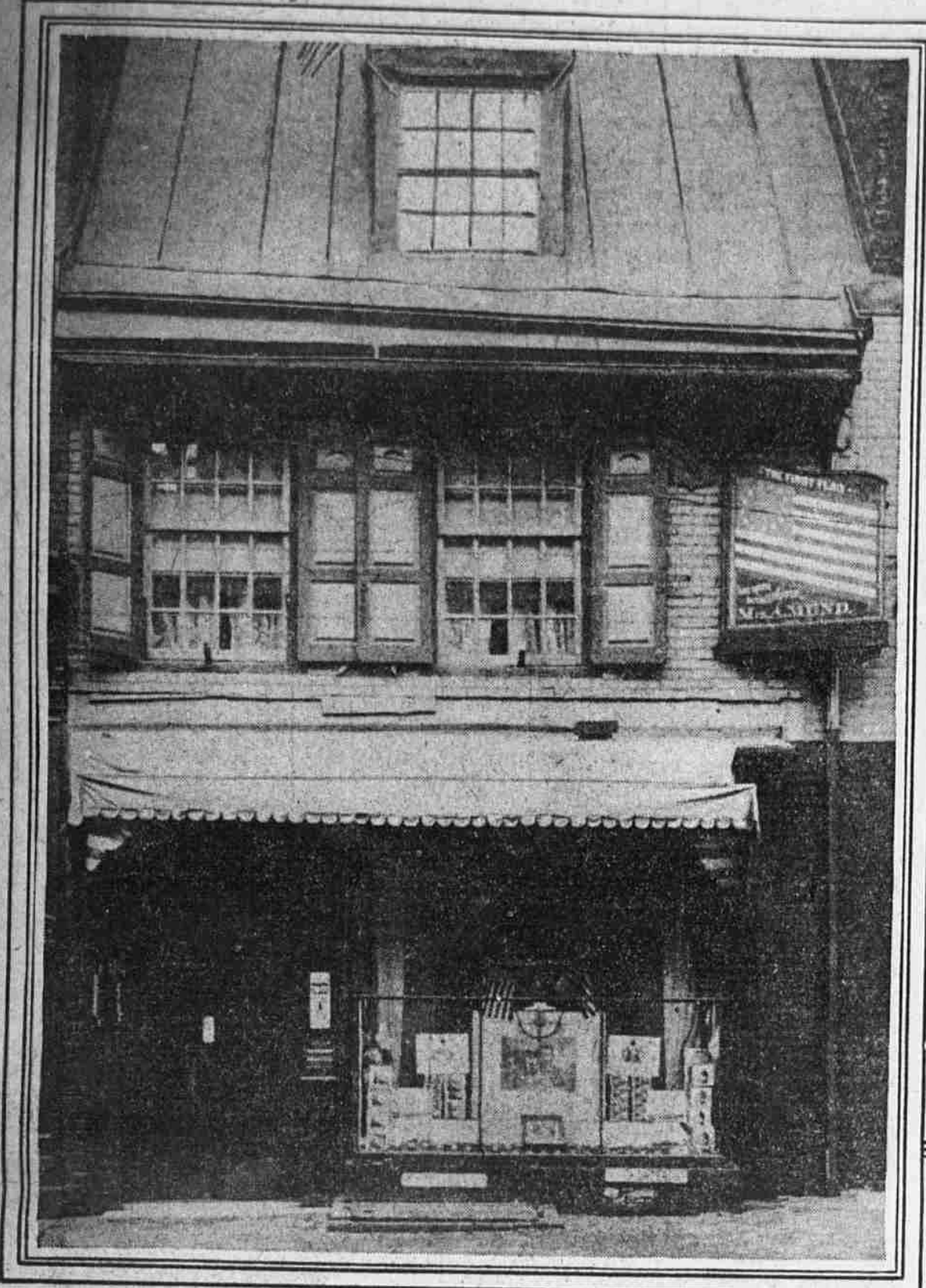




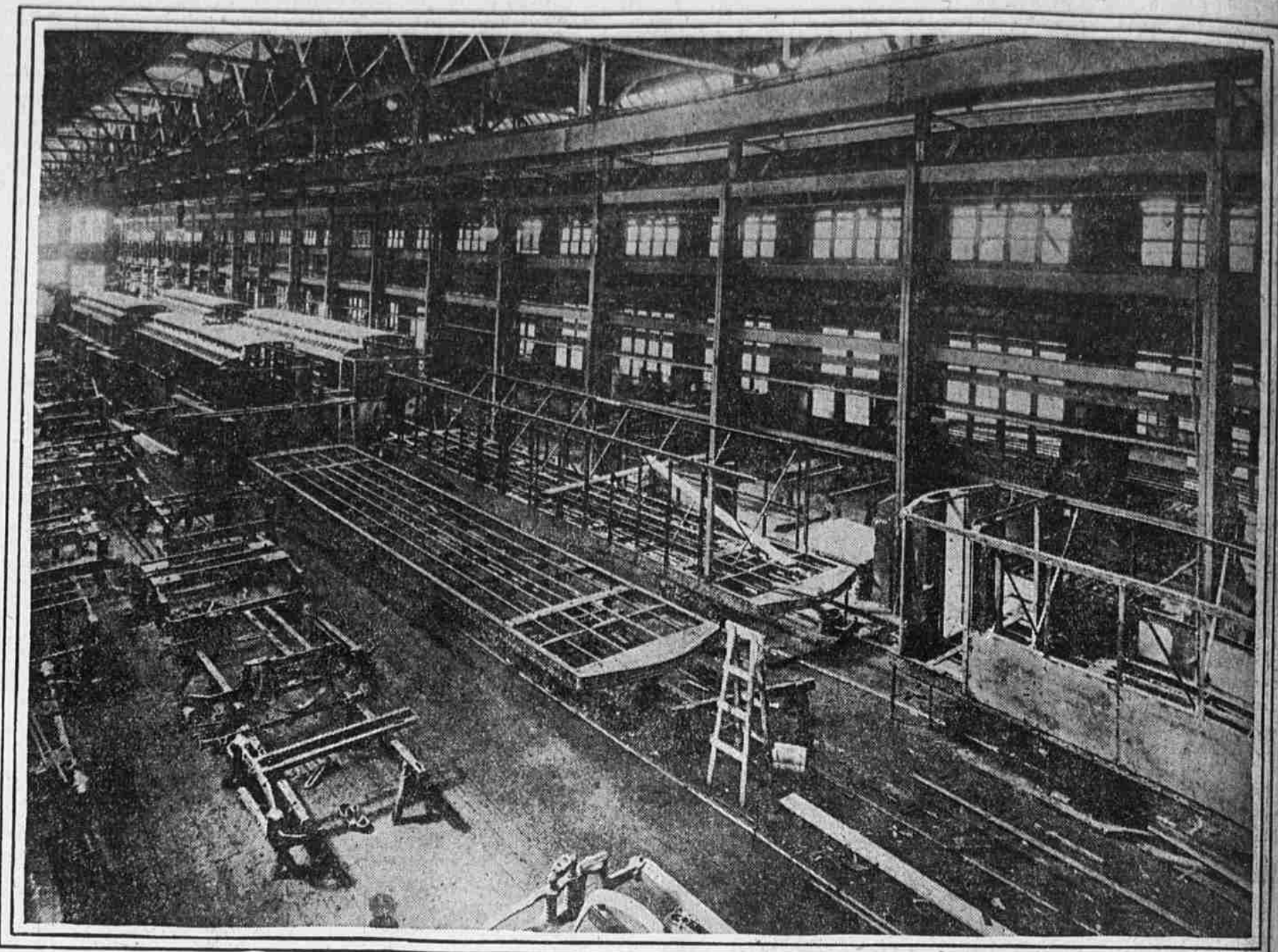
# ILLUSTRATED Evening Ledger

THURSDAY  
June 29, 1916

ADVERTISING DELEGATES WHO HAVEN'T SEEN THESE YET ARE MISSING A GOOD CHANCE



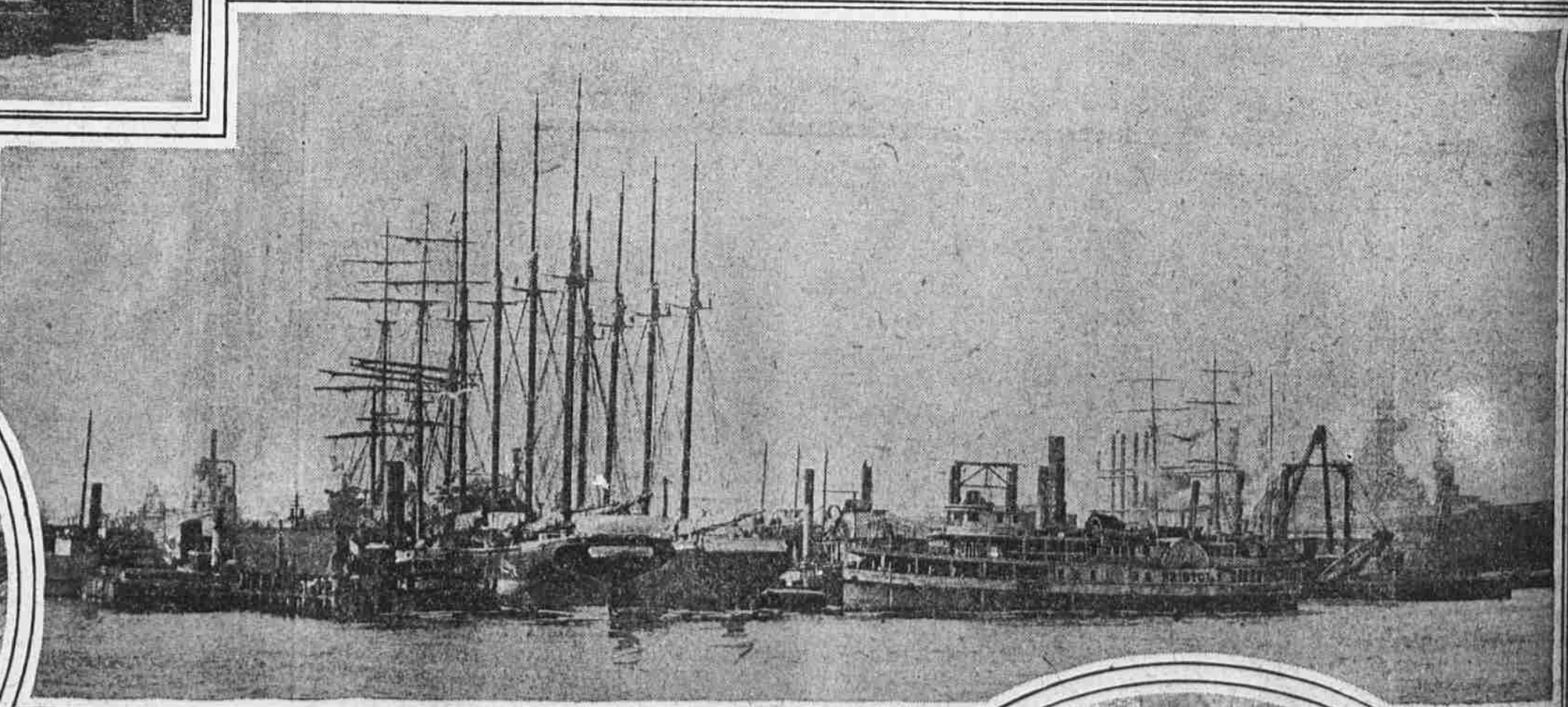
BETSY ROSS HOUSE, HOME OF THE AMERICAN FLAG



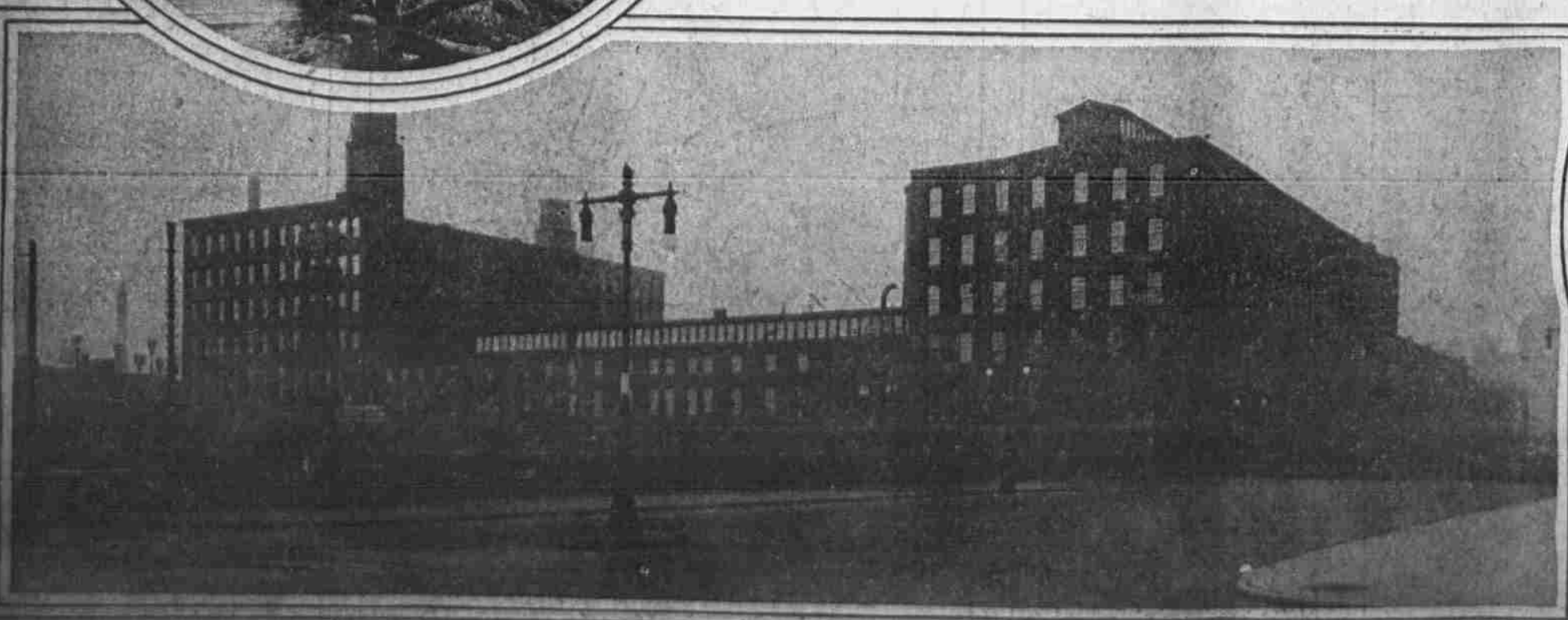
BRILL'S CAR WORKS, WHERE MOST OF THE COUNTRY'S STREET CARS ARE MADE



ALONG THE WISSAHICKON CREEK, FAIRMOUNT PARK



GREAT SHIP HOSPITAL FOR DECREPIT VESSELS AT FOOT OF MIFFLIN STREET



BALDWIN LOCOMOTIVE WORKS ON BROAD STREET BELOW SPRING GARDEN



FRANKLIN'S GRAVE, 5TH AND ARCH STREETS