



ILLUSTRATED

Evening Ledger

TUESDAY
June 20, 1916

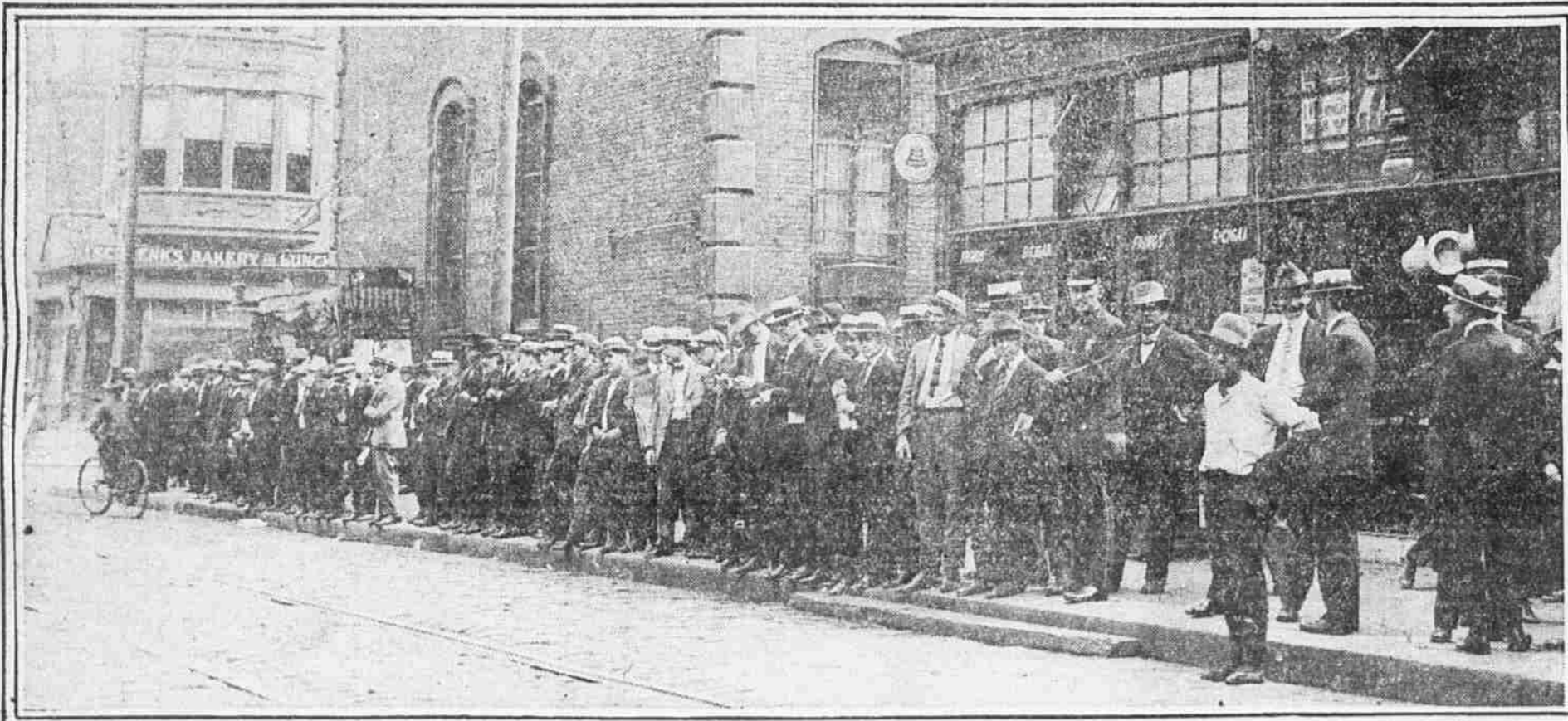
CAMERA MEN REFLECT MEXICAN COLOR IN LAST-MINUTE DISPATCHES FEATURING THE DAY'S NEWS



EL PASO'S WATER FRONT ALONG THE SHALLOW RIO GRANDE

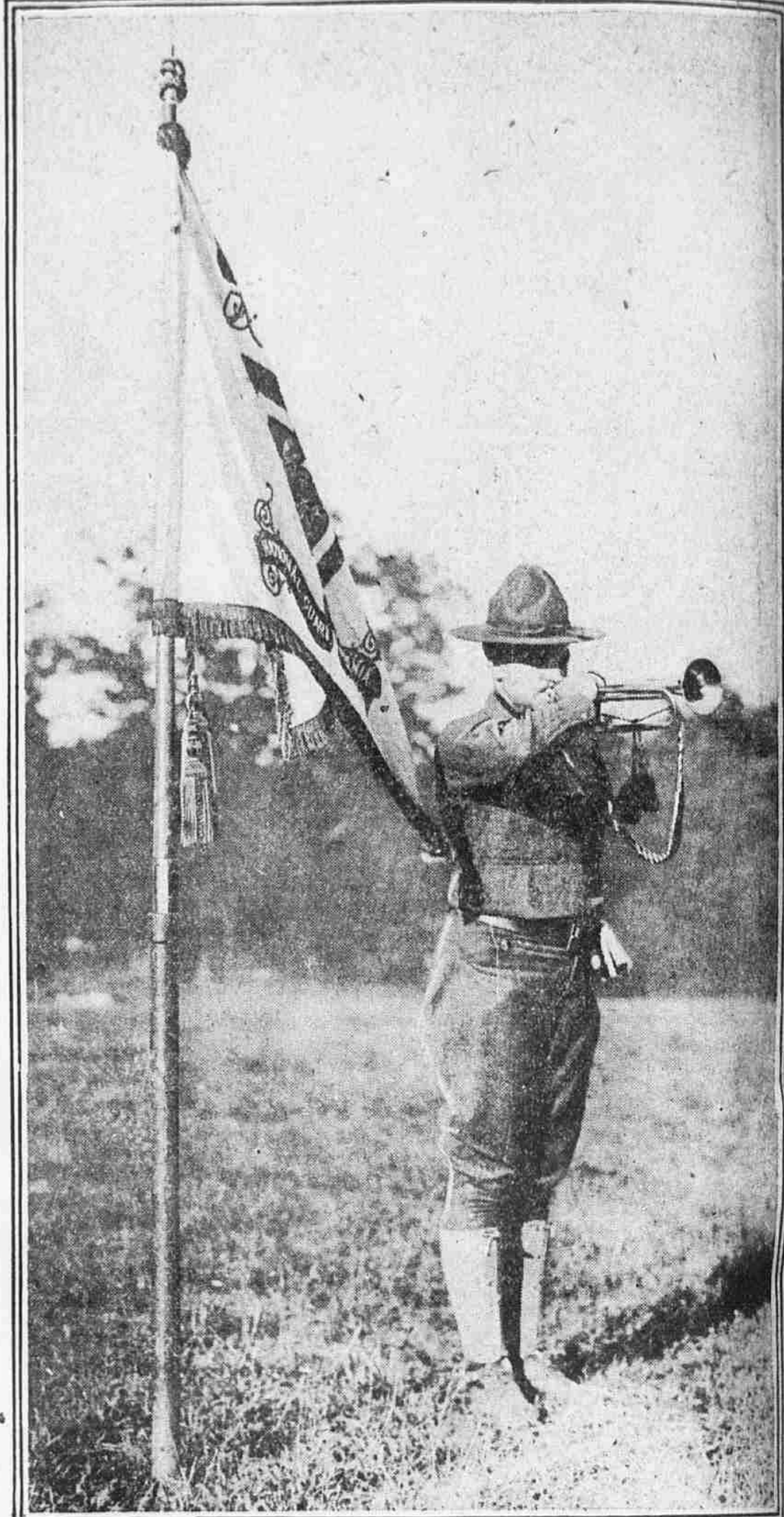
There is only a thin, shallow strip of water separating Mexico and the United States at this Texas city. The shallowness of the stream makes it easily crossed by raiders bent upon inciting hard feeling between the two countries.

Copyright, Underwood & Underwood.



PROSPECT OF WAR GIVES MUNITIONS BUSINESS ANOTHER BOOST

This is only part of the line of men which waited at 15th and Arch streets for jobs at the Remington Arms Company's plants. The applicants are of all ages and come from every part of Philadelphia and neighboring cities.



"YOU CAN'T GET 'EM UP, YOU CAN'T GET 'EM UP"

The familiar and much-hated "reveille" will resound through the hills around Mount Gretna Saturday, when the militiamen of Pennsylvania answer the mobilization call.



FIRST FOUR MEN RESPONDING TO THE 3D REGIMENT CALL

These guardsmen didn't take long to get on the job after the call to arms was issued. From left to right they are Sergeant J. D. Dolan, Sergeant R. J. Reilly, Sergeant W. J. Carver and Corporal J. Koch.



PHILADELPHIA "AD" HEADQUARTERS PREPARES FOR CONVENTION NEXT WEEK

This is a typical scene in the busy headquarters in the Bell Telephone Building, where Secretary Theodore E. Ash is dictating one of his numerous letters to Miss Muriel Webb.