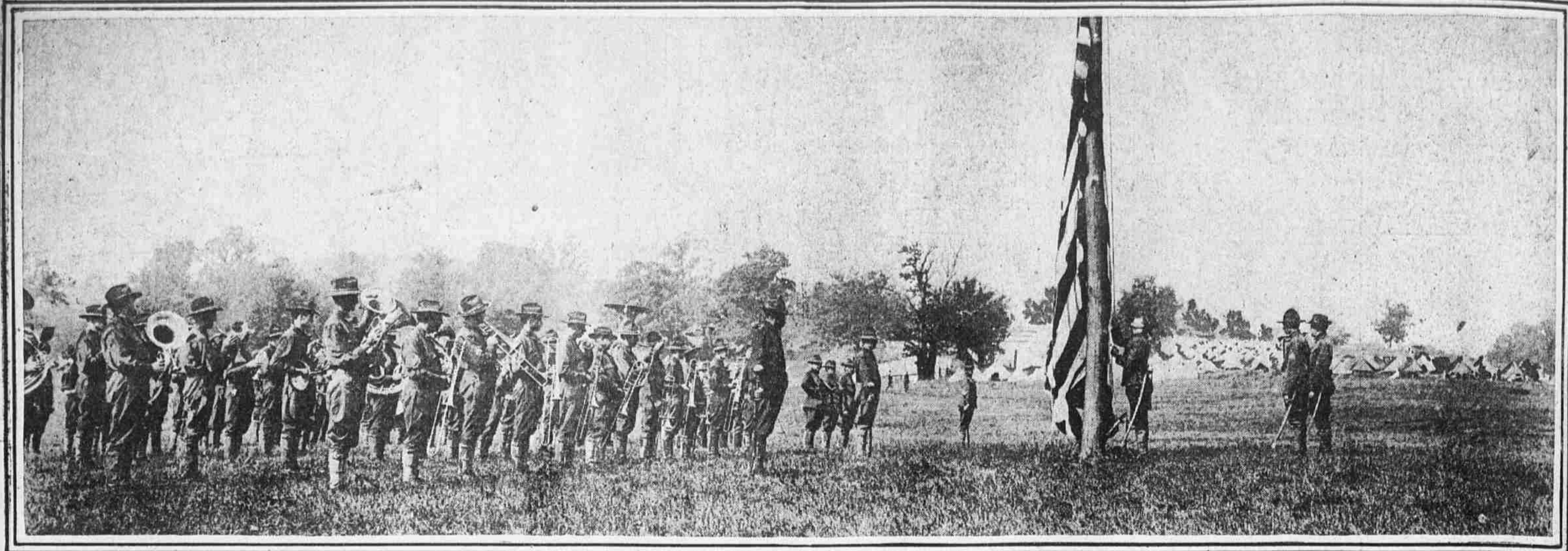




ILLUSTRATED
Evening Ledger

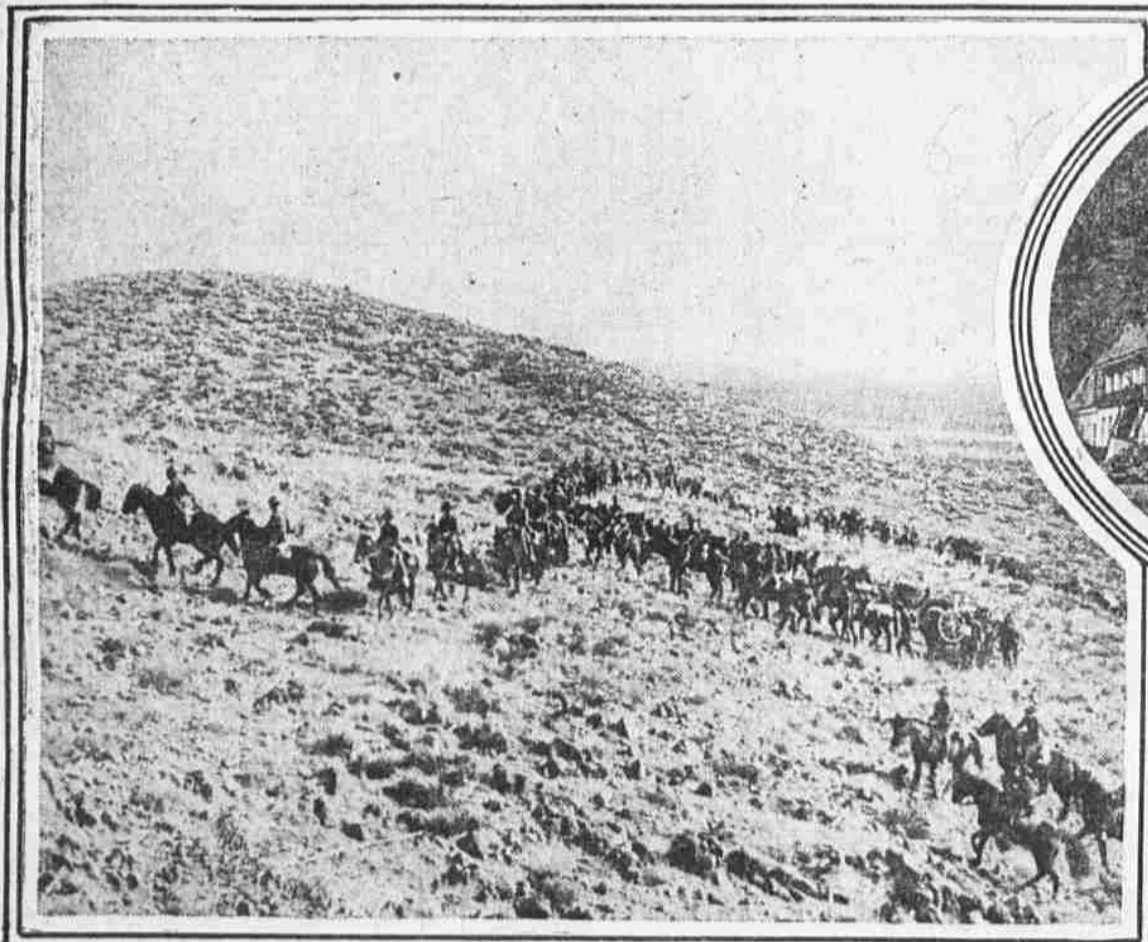
MONDAY
June 19, 1916

MT. GRETNA, WHERE PENNSYLVANIA MILITIA WILL MOBILIZE, AND SCENES IN THE TROUBLED AREA

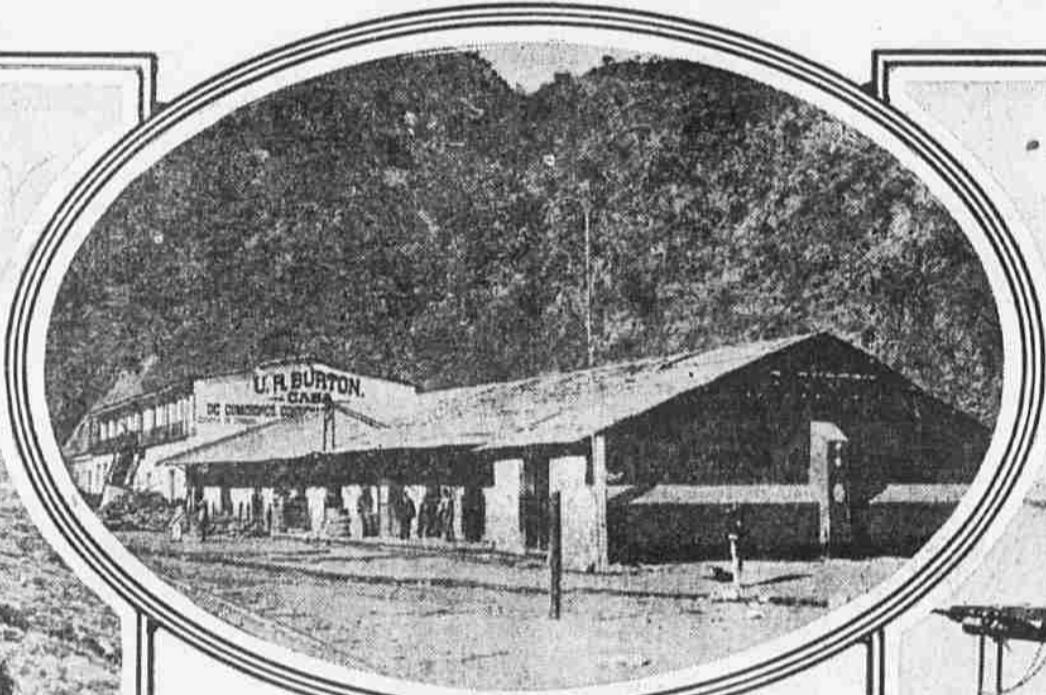


PENNSYLVANIA MILITIAMEN IN CAMP AT MT. GRETNA. THIS SCENE WILL BE DUPLICATED ON JUNE 24 WHEN THE TROOPS ASSEMBLE FROM ALL PARTS OF THE STATE

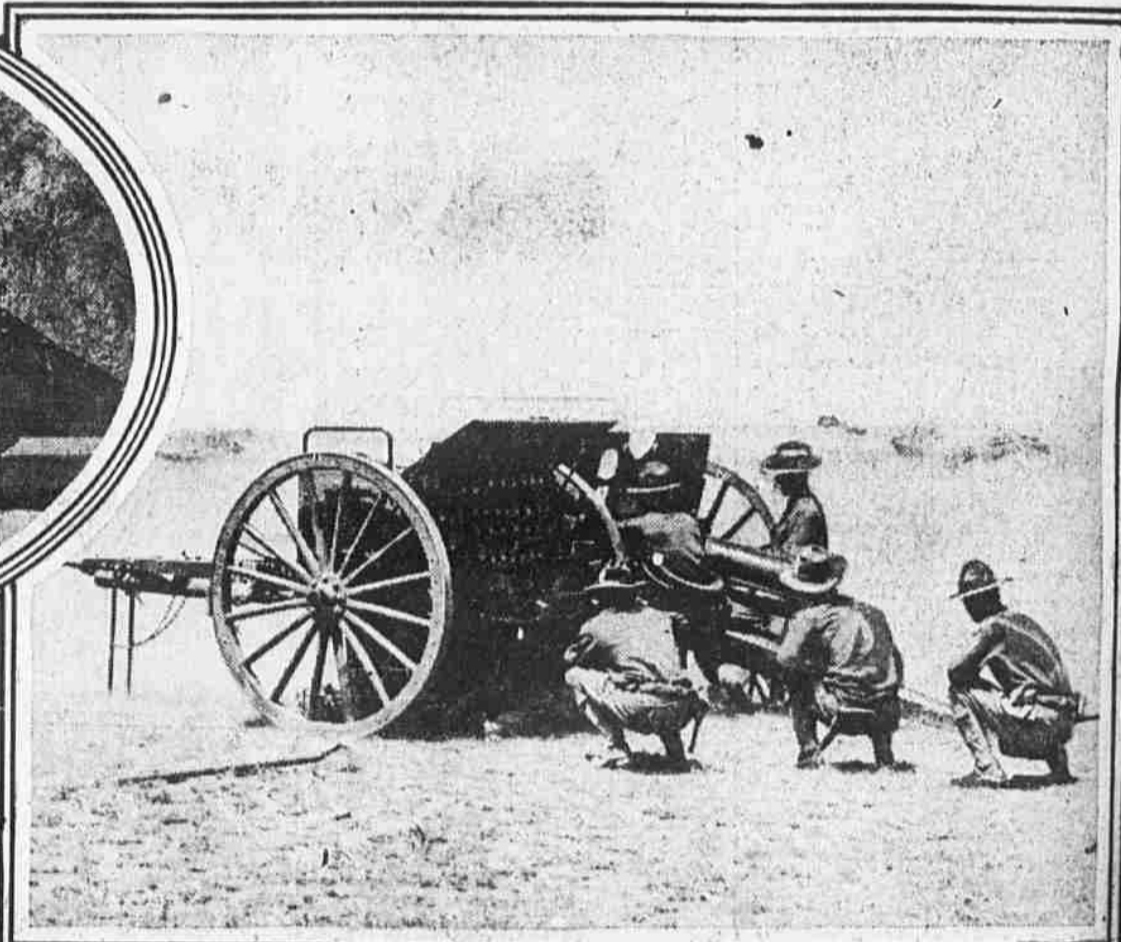
Photo by a Staff Photographer.



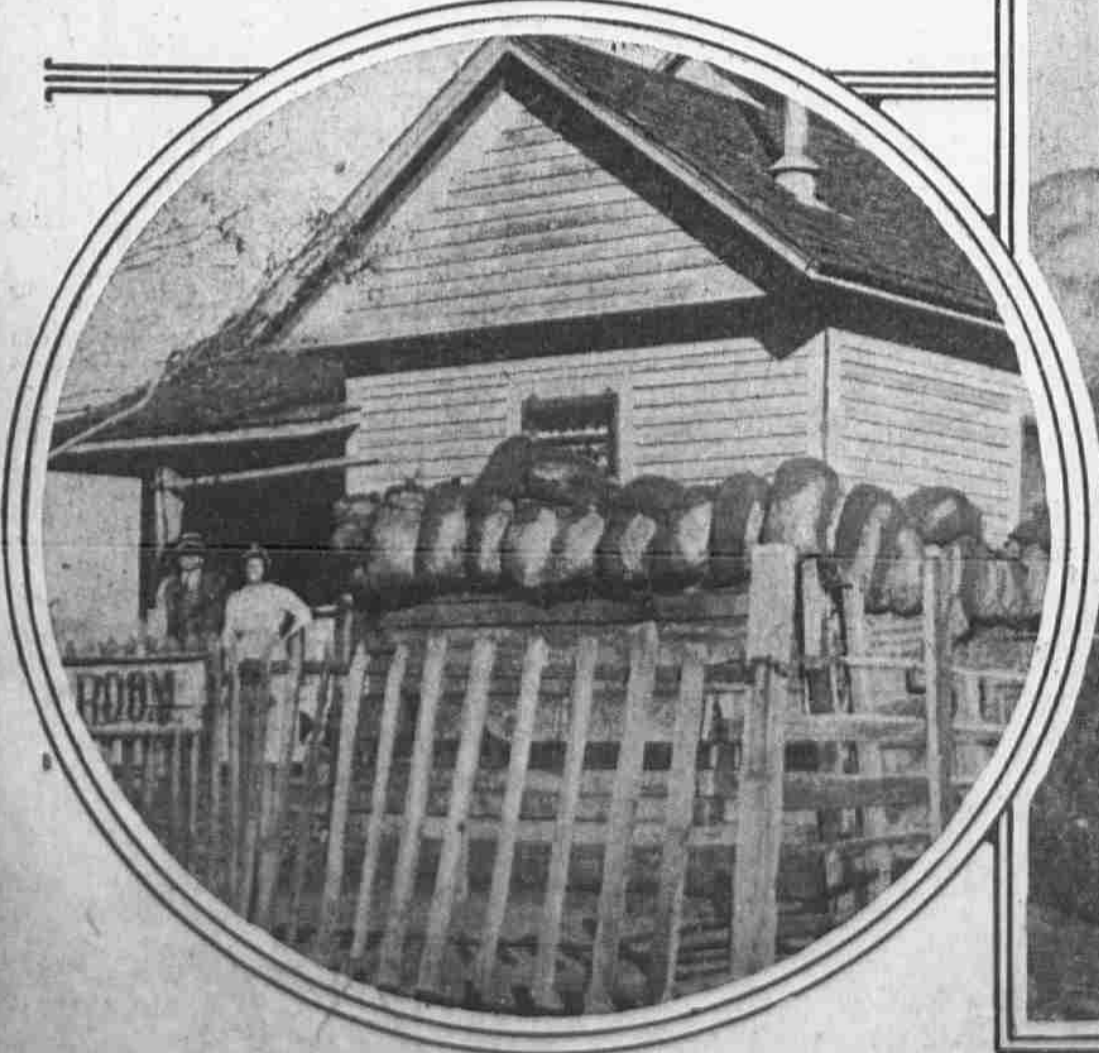
ALONG THE MEXICAN BORDER
United States troops are seen crossing the hot, arid, alkali plains which stretch for hundreds of miles into Mexico.



TYPICAL AMERICAN ENTERPRISE IN MEXICO
Hundreds of these concessions, owned and operated by citizens of the United States, are said to be in danger of destruction and confiscation.



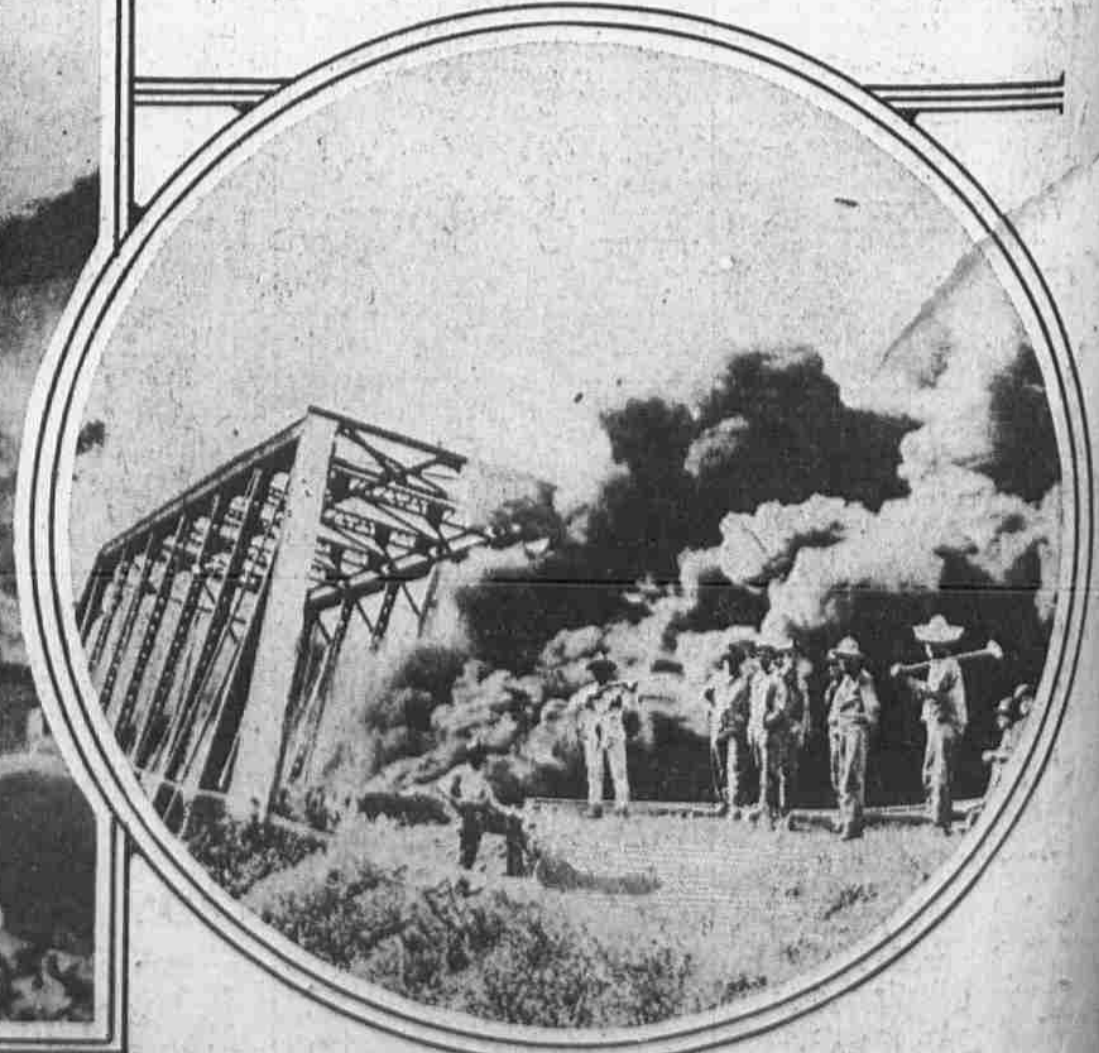
FIELD ARTILLERY IN ACTION
Members of the New Mexico militia along the border. The 3-inch gun is shown in full recoil after firing.



AMERICAN SHACK BARRICADED
Ever since the belligerent Mexican factions got tired of fighting amongst themselves and turned their attentions to the Americans in the stricken country the "gringos" have maintained armed camps at all their settlements.



VICTIM OF MEXICAN LAWLESSNESS
C. E. Watson, a Texas ranger, was one of the first Americans killed by the Villa bandits.



AN IDEA OF WAR'S EFFECT IN MEXICO
Mexico has learned its lesson from the warring nations in Europe well. Here is a typical scene along the railway lines that run from the United States into the southern republic. The bridge was first dynamited and then burned.