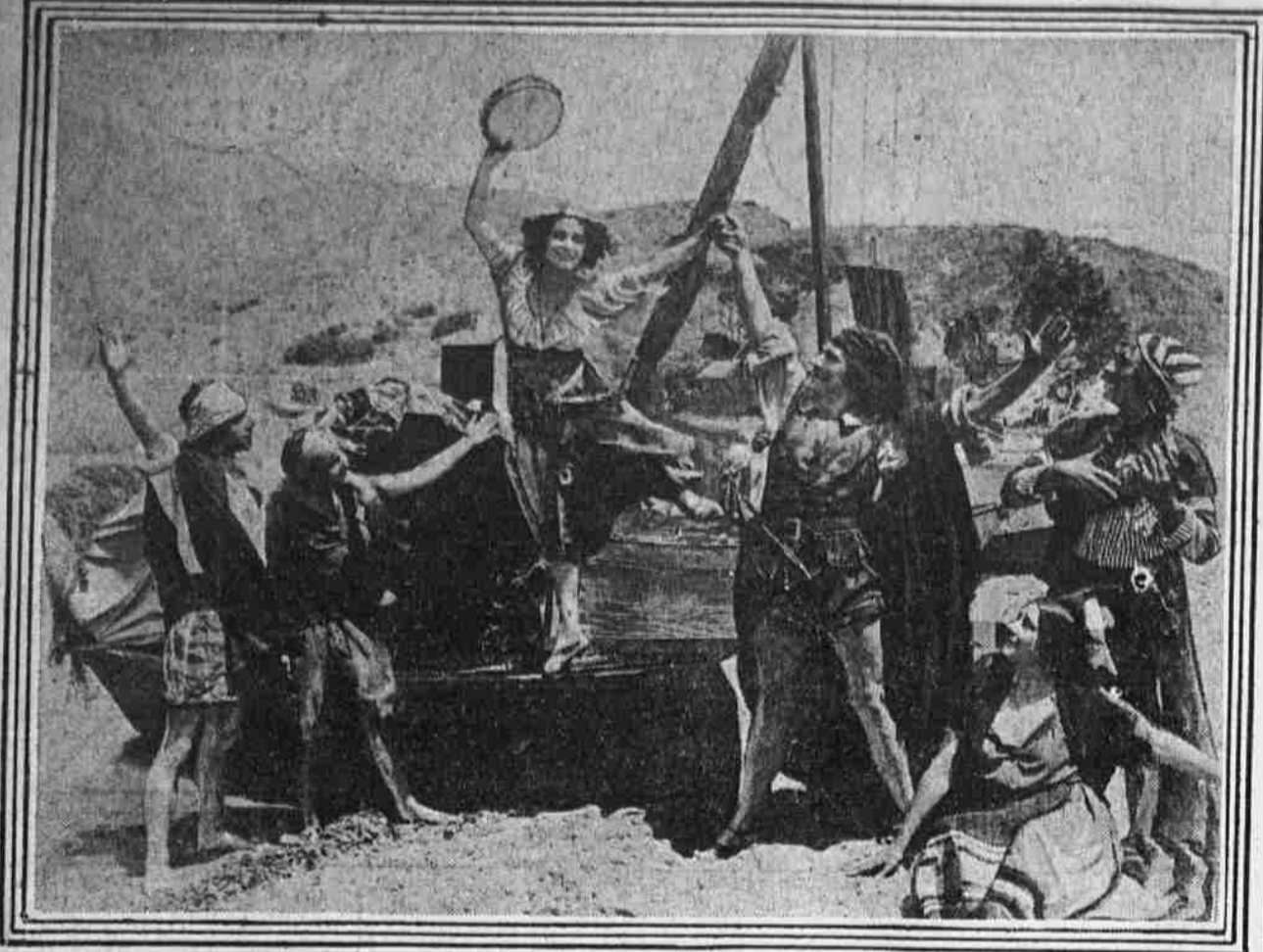




ILLUSTRATED
Evening Ledger

MONDAY
 June 5, 1916

GRAPHIC NOTES AND COMMENT ON THE VARIED NEWS OF THE DAY AS RECORDED BY THE CAMERA



"PAVLOWA, THE INCOMPARABLE," IS A NEW RECRUIT TO THE ARMY OF PHOTOPLAYERS. Following the example of other scintillating ornaments of the stage, the graceful Russian has tried her hand—or rather, her foot, since she is a dancer—at the movies. This is a dance scene from the new production, "The Dumb Girl of Portici."



Photo by Staff Photographer.
 "THE CALL OF JUNE"
 Miss Helen Crump sounds the pipe of Pan, which summons the spirits of the woods to the dance.



THE BEACH SEASON IS ON AT ATLANTIC CITY. Officially it opened on Memorial Day, but at that time the chill breath of a late spring had not departed from the waters. Since then bathers have daily become more numerous. Curious to relate, the fair sex has been harder than the unfair one.

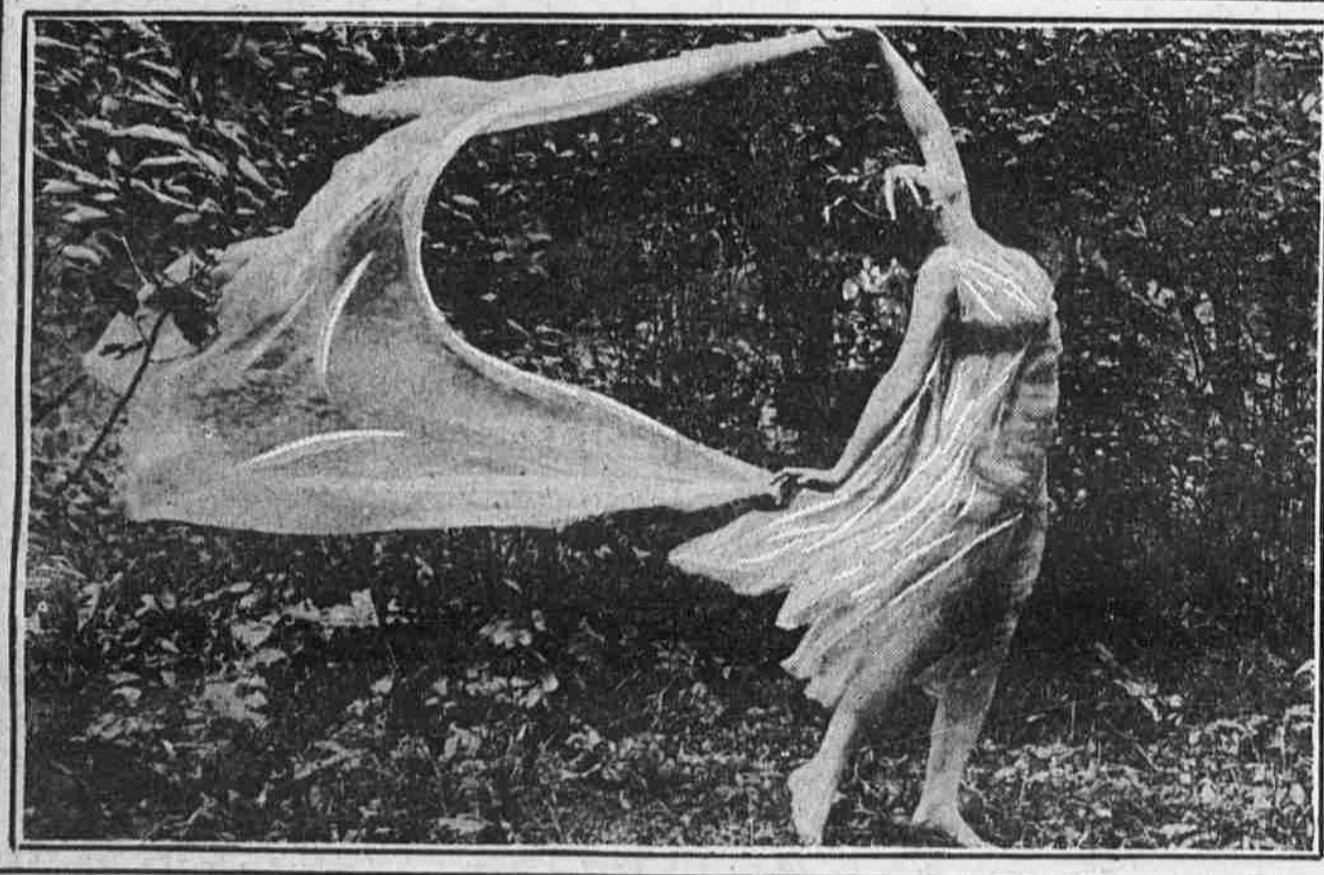
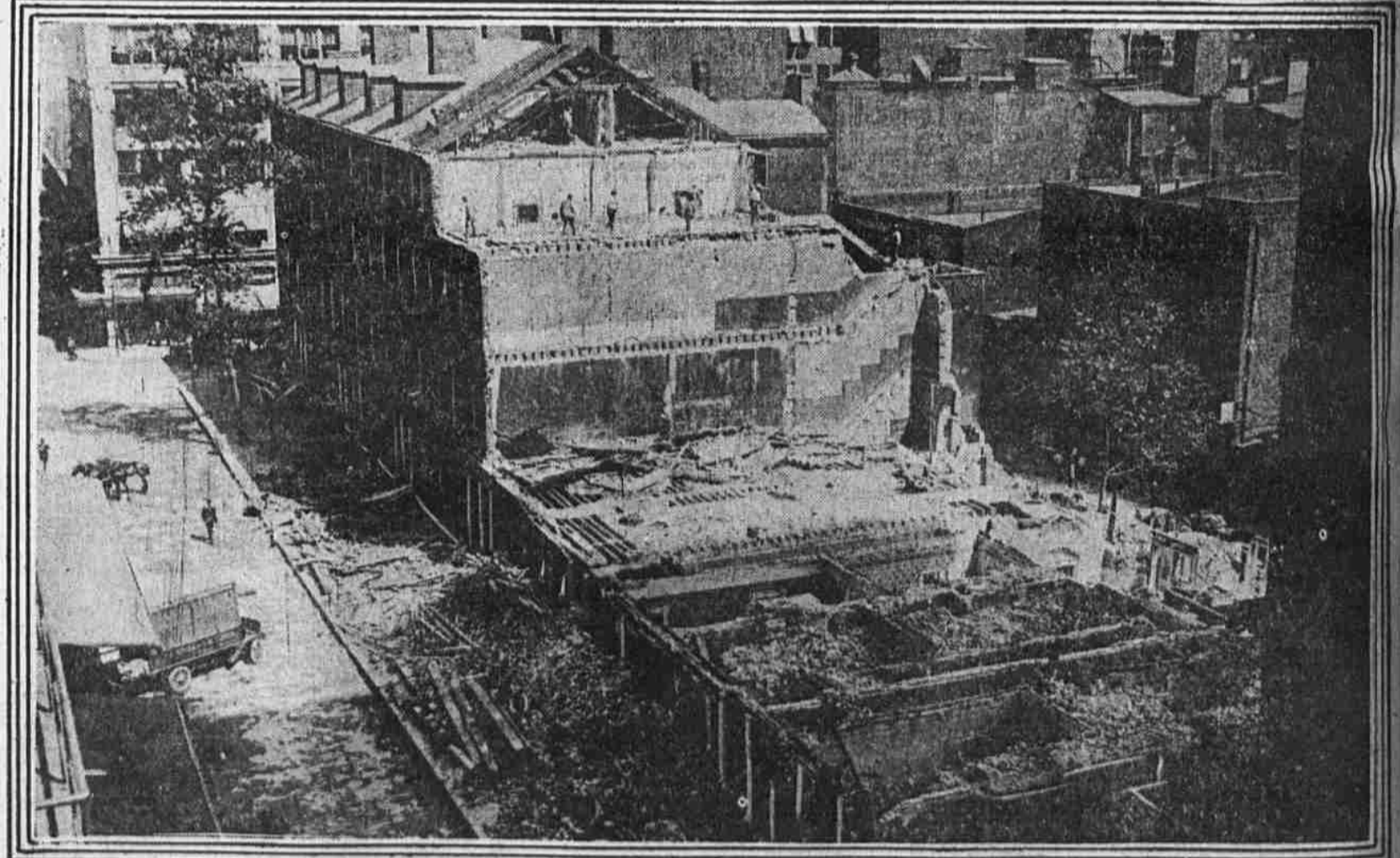
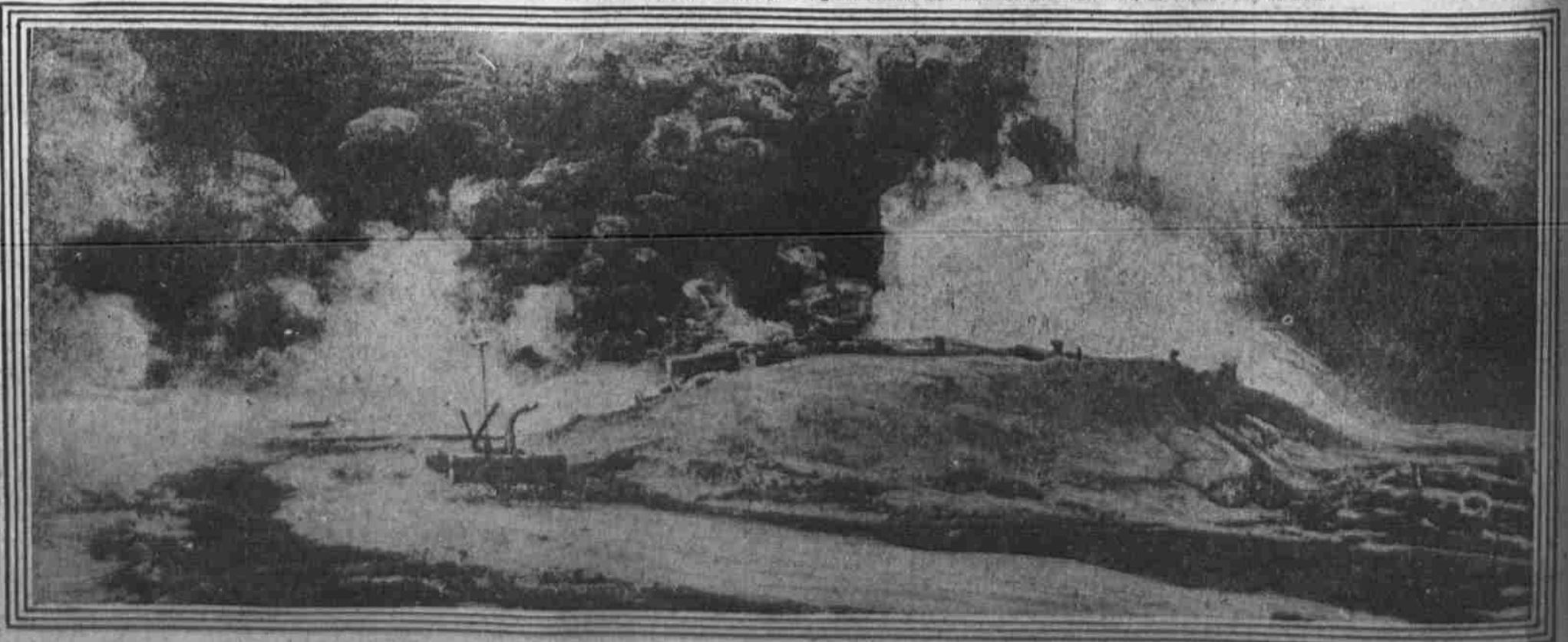


Photo by Staff Photographer.
 "A SUMMER BREEZE"
 Illustrated by Miss Louise Gifford in a setting of trees and green grass on an estate in Lansdowne.



THE OLD COLONIAL HOUSES OF GIRARD STREET FALL BEFORE THE WRECKER. This is a view from the top of the Stephen Girard Building, showing what is being done to clear the way for a new commercial structure to be erected in the little thoroughfare between Market and Chestnut, 11th and 12th streets.



A REDOUBT IN ALSACE UNDER THE FIRE OF HEAVY SHELLS. The cloud of smoke at the left is from a single "coal box," which is the name the British Tommies have for the German high-explosive shell. The position is one held by the French at Mulheim, which is situated on the strip of territory that the French still hold on German soil.

Photo by Staff Photographer.
 "WHERE THE SHADES INVITE"
 A dance a deux by the Misses Louise Gifford and Louise Killinger, who, with Miss Crump, above, are from the Meyer School of Rhythmical Expression. They have been teaching the children of the Southwark Neighborhood School in the Meyer system.