

ILLUSTRATED

Evening Ledger

THURSDAY
June 1, 1916

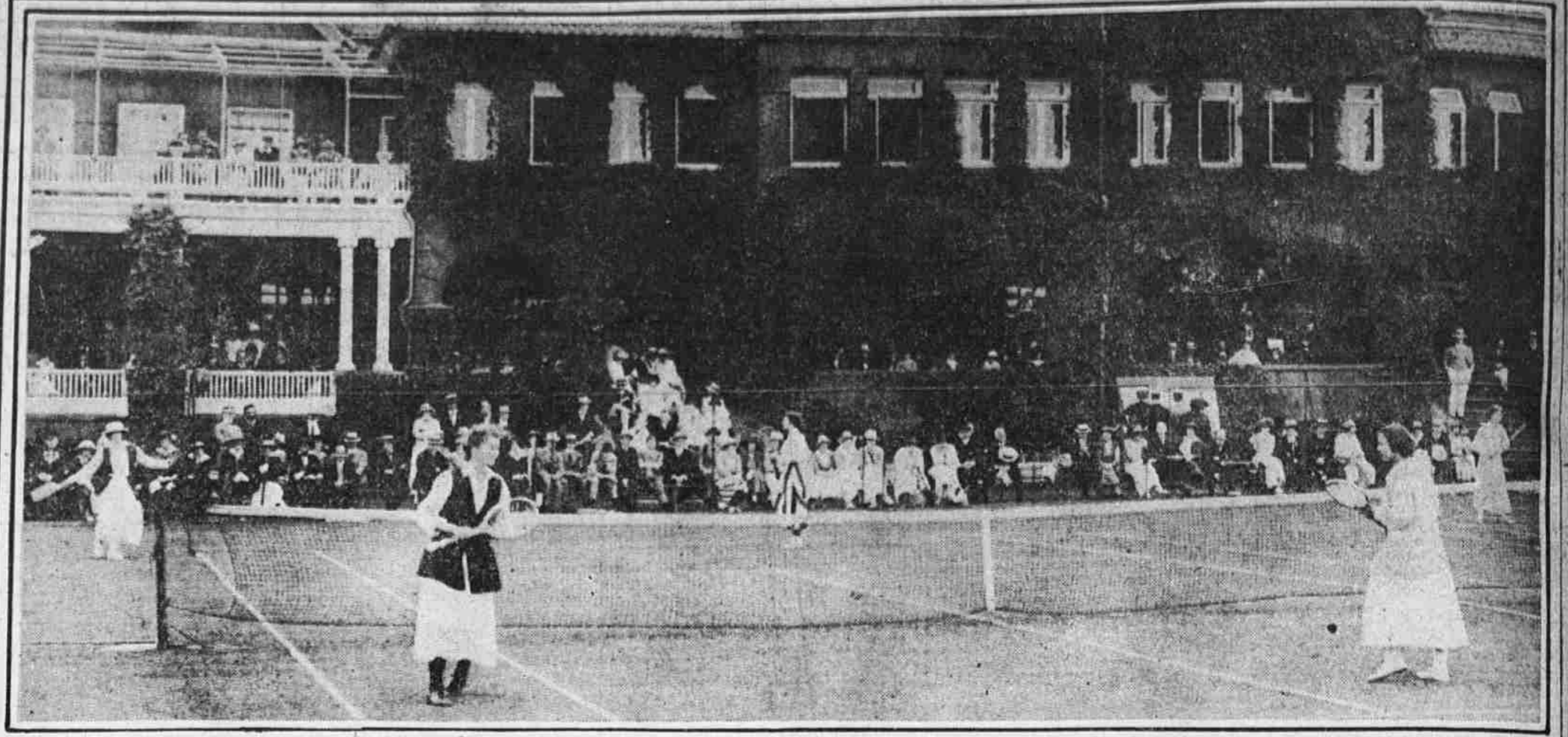
GRAPHIC NOTES AND COMMENT ON THE VARIED NEWS OF THE DAY AS RECORDED BY THE CAMERA



By Evening Ledger Staff Photo

EXPERTS MARVEL AT HER DRIVING POWER

This picture of Miss Molla Bjurstedt, taken at Merion, illustrates the sweep of the Norse girl's tennis drive—easy, yet causing dazzling speed.



THE HANDSOME SETTING OF THE WOMEN'S CHAMPIONSHIP TENNIS MATCHES
In the foreground at the left is Miss Eleanor Sears, whose partner in the doubles is Miss Bjurstedt. They are playing this week on the beautiful turf courts at the Merion Cricket Club, Haverford, for the women's Pennsylvania and Eastern States' championship.



Copyright, International Film Service
PRIME MINISTER ASQUITH ON PEACE-MAKING VISIT TO IRELAND

There is small hint of the recent tragic events in Ireland on the faces of the figures here, who are, from the left, General Maxwell, who was in charge of the troops that broke the uprising; Lady Wimborne, wife of the then Lord-Lieutenant, and Mr. Asquith. They are attending a review of loyal volunteers.



Photo by Underwood & Underwood

FRANCE'S MOST TALKED-OF GREYHOUNDS OF THE AIR
On the right is Lieutenant Jean Navarre, known as the "Fokker killer," after bringing down 16 German aeroplanes. Around his neck he wears his guerdon, a lady's silk stocking. His companion is Georges Carpentier, former pugilist, now an army aviator.



ARRIVING AUSTRALIAN AND NEW ZEALAND TROOPS ARE BEDECKED AND GARLANDED WITH FLOWERS BY WOMEN AT MARSILLES

Neither the British nor French Governments have made any official announcement about the presence of British Columbia in the south of France, but pictures have reached this side which show them planted there plenty enough. It is believed that these men, along with the recently arrived Russians, have been sent to France with a possible view to their use in the defense of Verdun.



Photo by Hambrant

A STORY IS REVEALED IN EVERY LINE ON THE FACES OF THESE VENERABLE JEWS
The sorrows of ancient Israel in the world that is now is revealed in these prophetic figures. More than six-score of them live in the Jewish Sheltering Home, at 315 South 2d street. Some of them are there from a misfortune; others because they cannot endure the modernity of Americanized sons and daughters.