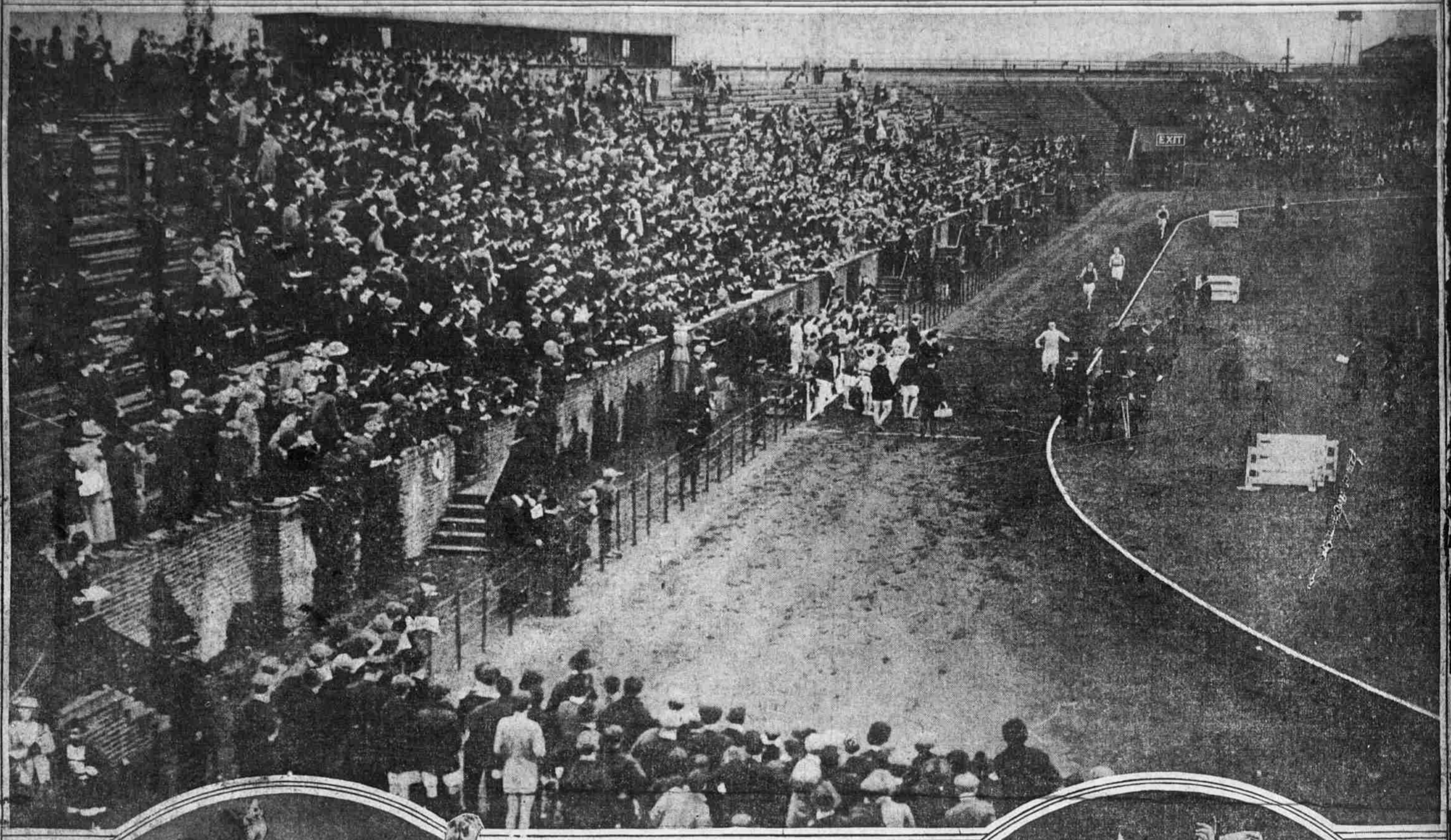




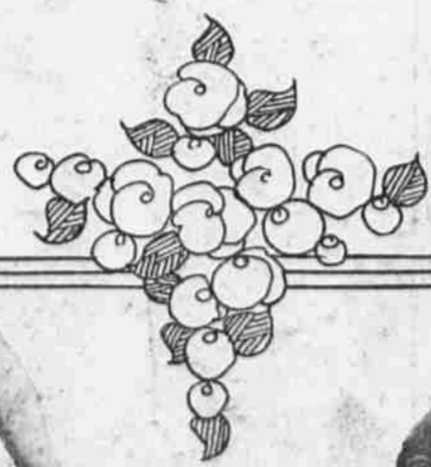
ILLUSTRATED Evening Ledger

SATURDAY
April 29, 1916

GRAPHIC NOTES AND COMMENT ON THE VARIED NEWS OF THE DAY AS RECORDED BY THE CAMERA



LA SALLE WINNING CITY COLLEGE CHAMPIONSHIP RELAY RACE YESTERDAY AT FRANKLIN FIELD



STUDENTS OF PHILADELPHIA INSTITUTIONS GIVE EXCELLENTLY DRILLED PERFORMANCES OF SHAKESPEAREAN FANTASY AND GREEK PLAY

The two upper pictures are scenes from "In the Forest of Arden," given last night by the High School for Girls. In No. 1 are the Misses Henrietta Keller, Helen Simmons and Helen Thawley as attendants to Ariel. In No. 2 are the Misses Katherine and Joanna Massey and Miss C. E. Wilson as attendants. Below are two scenes from Aristophanes' "Frogs," given by the classical and English departments of Temple University. No. 3 shows the frogs themselves as played by Messrs. Bickmore, Ervin, Farnell, Galt, Paton and Scudder. No. 4 is a chorus composed of the Misses Hilley, Shropshire, Gettier, Absalom, Dalley, Solomon, White, Rosenthal, Watkins, Wentz, Wilson, Bloom and Sullner.