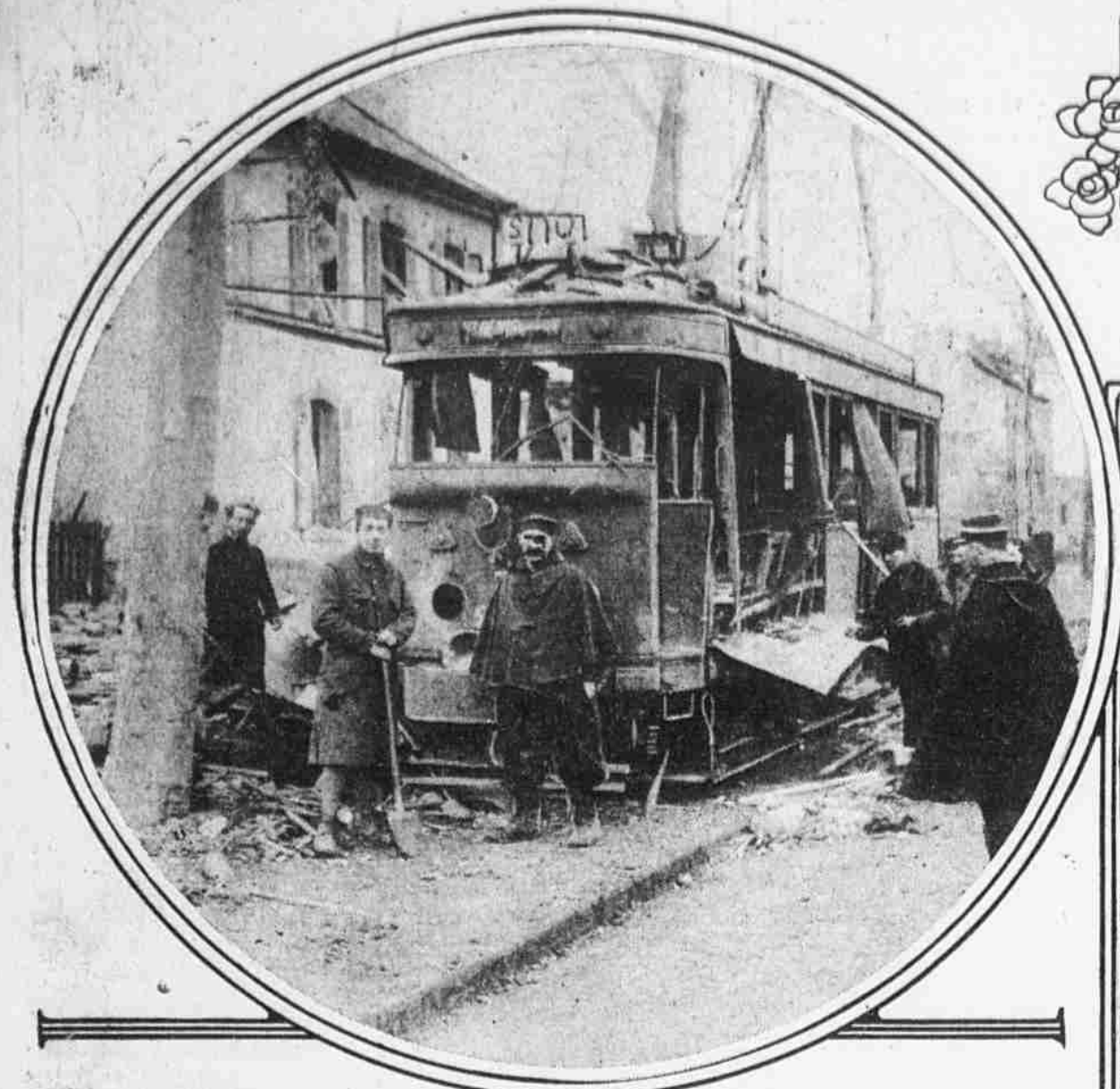




ILLUSTRATED
Evening Ledger

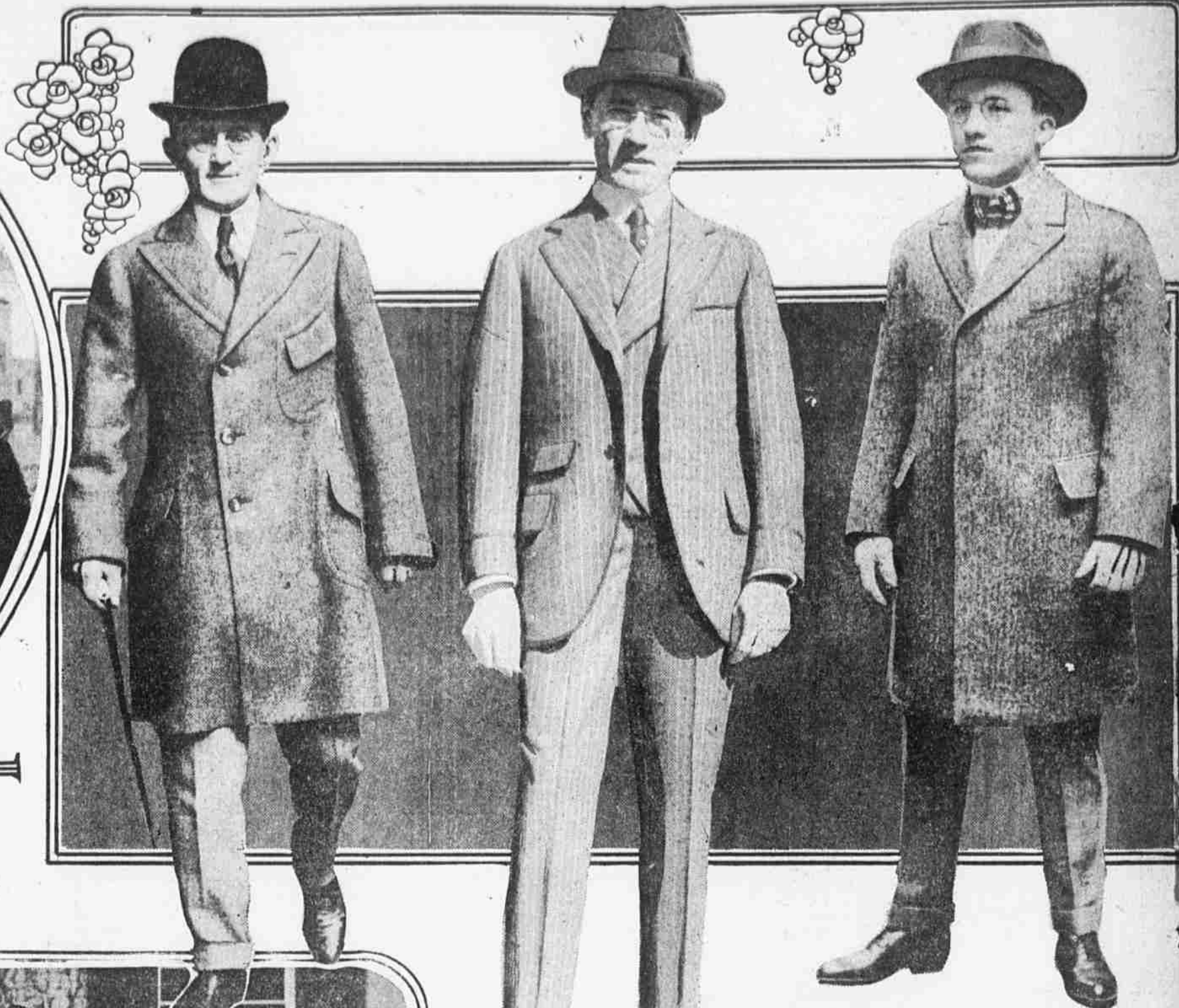
THURSDAY
 April 13, 1916

A VARIETY OF PICTORIAL SIDELIGHTS ON THE LATEST NEWS OF THE DAY FROM MANY SOURCES



PARIS TRAM WRECKED BY MUNITIONS EXPLOSION

This street car, though several hundred feet distant, was torn to pieces by the explosion of a shell factory in the St. Denis quarter of the French capital. Two score victims were counted.



SPRING FASHIONS FOR MALE SEX—WHY NOT?

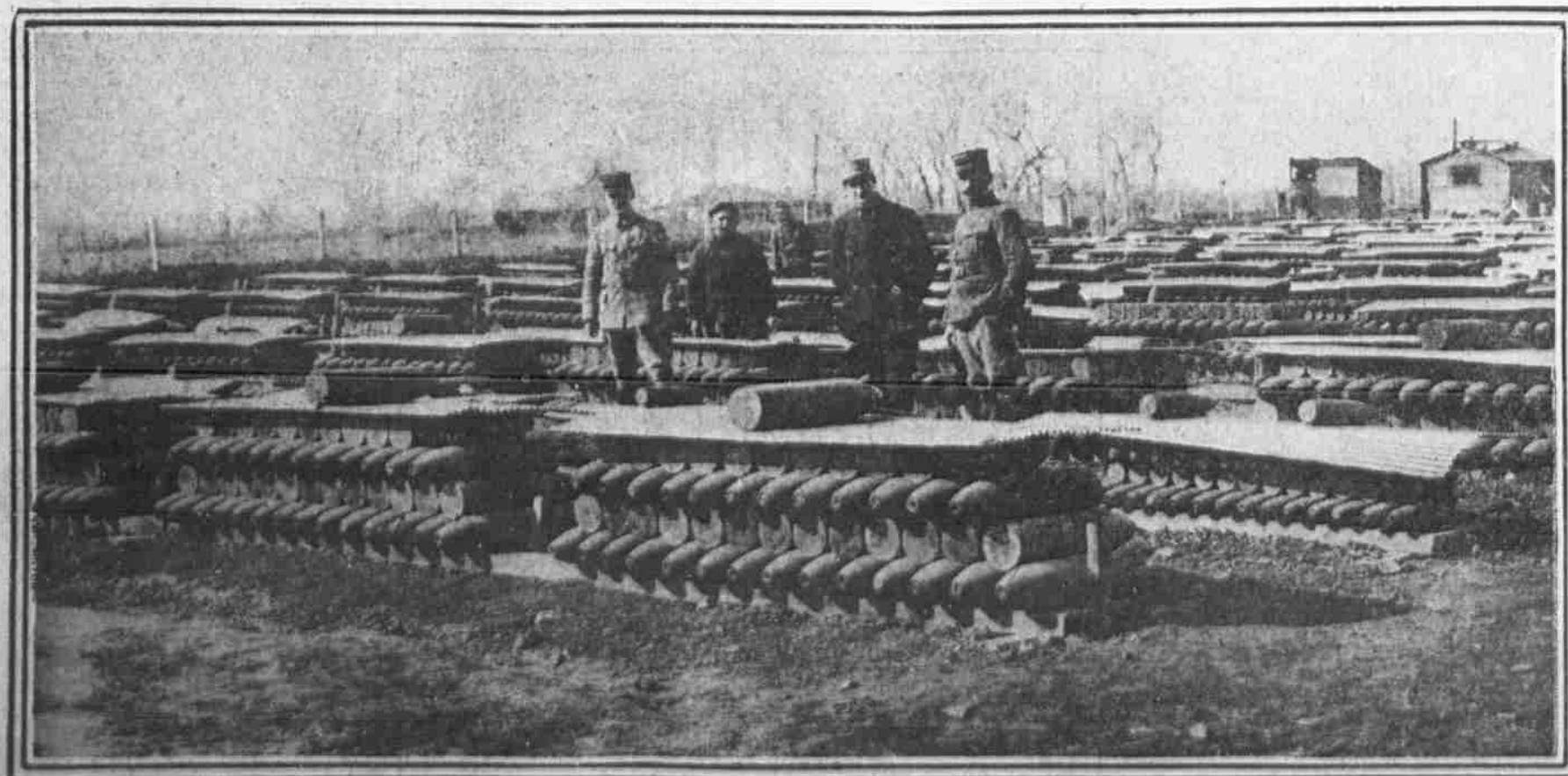
Here are some of the exhibits for the coming Fashion Show to be held at the shore by the Walnut Street Business Association. At the left is a close-fitting topcoat by Cunningham. In centre is a wide-lapelled business suit by Dixon. On the right is a neat, conservative topcoat by Fern.



SUFFRAGISTS OF CONGRESSIONAL UNION LEAVE CAPITAL FOR WESTERN TOUR

Photo by Harris & Ewing.

Left to right—Mrs. Florence Hilles, Wilmington, Del.; Mrs. Agnes Morey, Miss Lucy Burns, Miss Anna Constable, Mrs. John Rogers, Mrs. Percy Bead, the Misses Caroline Katzenstein and Ella Reigel, of Philadelphia; Miss Edith Goode, Mrs. W. D. Ascough, Mrs. Robert Baker, Miss Katherine Morey, Miss Agnes Campbell, Mrs. Harriot Stanton Blatch, Miss Julia Hurlburt and Mrs. Gertrude Newell.



GERMAN ATTACK FRENCH AT SALONICA HEAP UP AMMUNITION AGAINST EXPECTED

There have already been minor engagements on the Greco-Bulgarian front and a battle on a large scale may take place there at almost any moment. Both the French and British are strongly fortified at the Greek port and have batteries of heavy artillery waiting.



NEW YORK GIRL COPS START WORK IN STREETS

A juvenile police force has been organized by the East Side Protective Association as a campaign against street lawlessness and violations of the sanitary code. It chronicled the arrest of a very young lady offender.