



ILLUSTRATED Evening Ledger

TUESDAY
April 11, 1916

A VARIETY OF PICTORIAL SIDELIGHTS ON THE LATEST NEWS OF THE DAY FROM MANY SOURCES

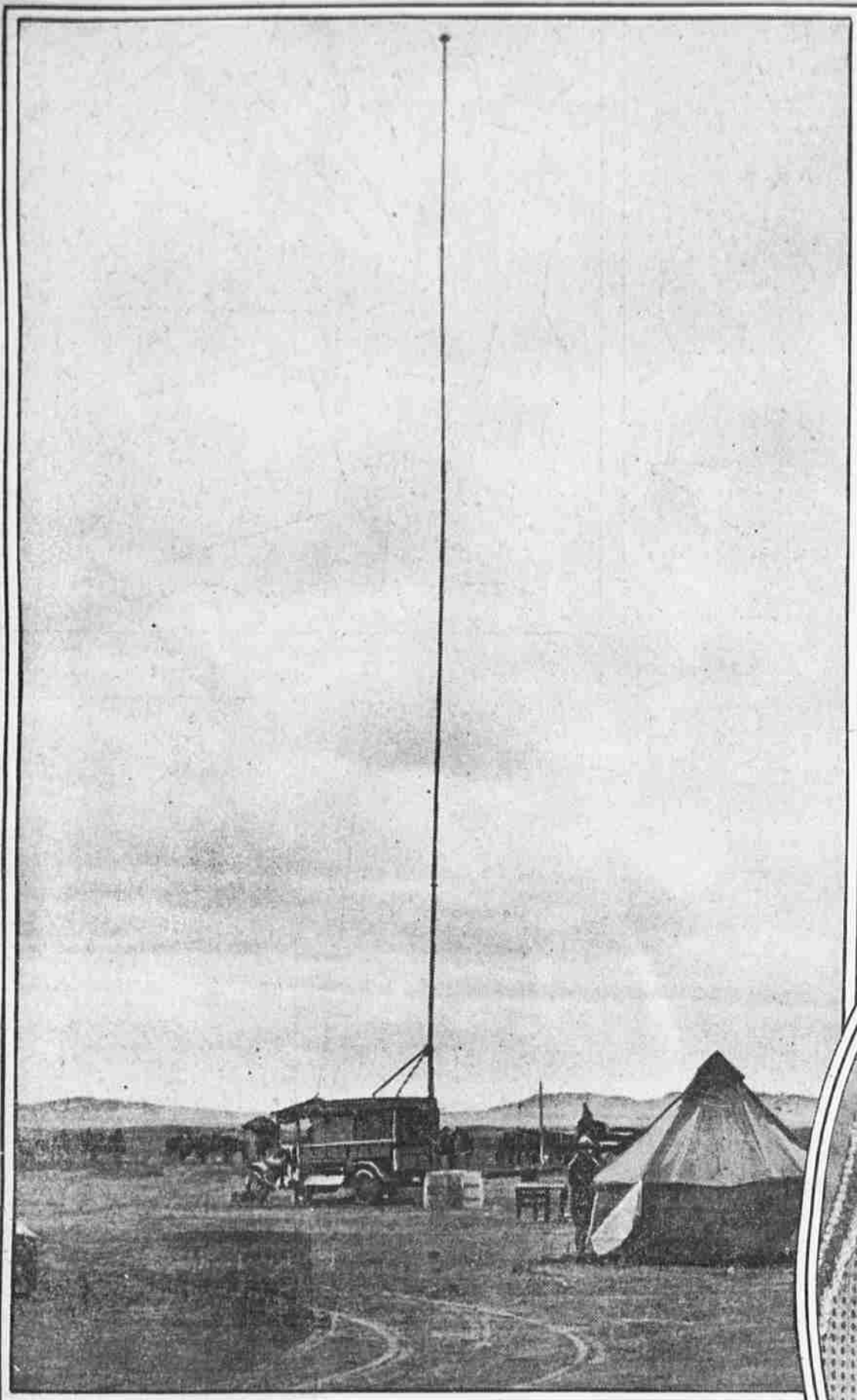
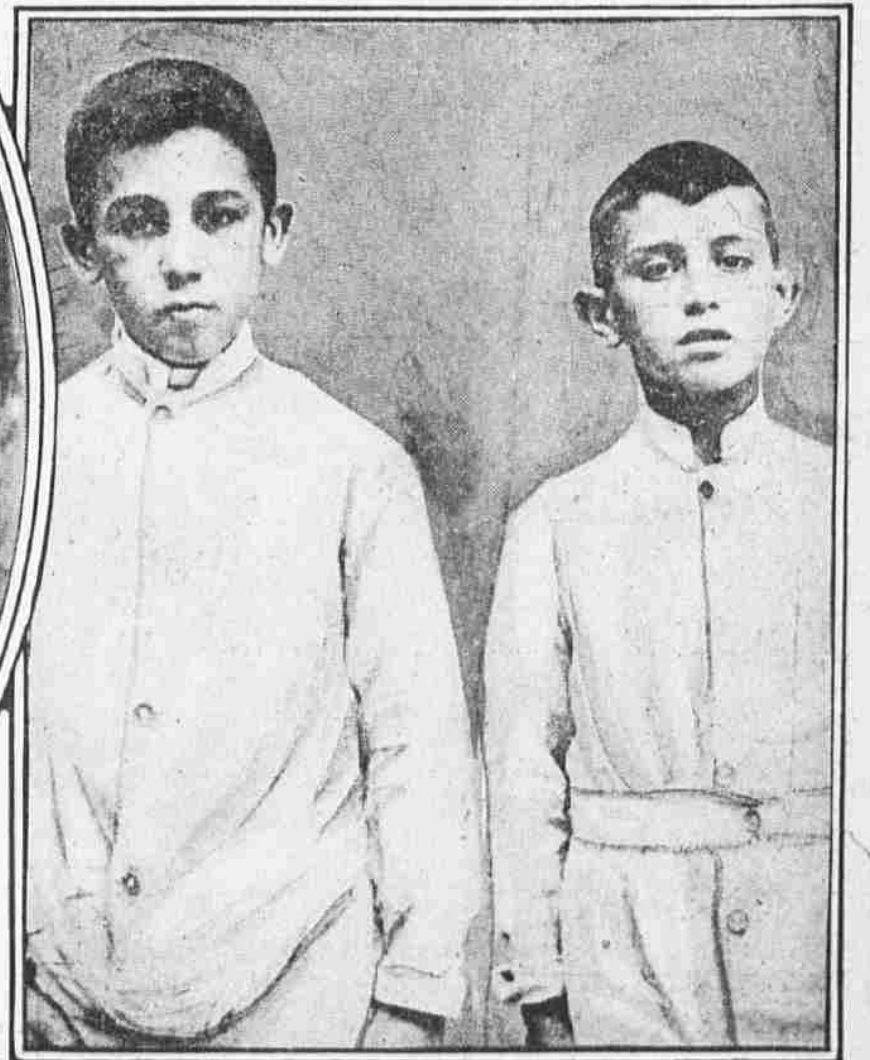


Photo by International Film Service.
THE CONNECTING LINK WITH THE ARMY IN MEXICO
Wireless receiving station at Columbus, N. M., by means of which Colonel Pershing's expedition keeps in touch with the United States. If it were not for this, the old-fashioned dispatch rider might have to be relied upon.



HUNGARIAN SOLDIERS BEARING BRUNT OF DUAL MONARCHY'S DEFENSE

Serious quarrels are reported to have broken out between the Austrian and Hungarian forces as a result of the alleged discovery that 70 per cent. of the men recently wounded belong to the latter race. The picture shows dismantled Honved Hussars in the trenches.



THE MOST ENVIED YOUNGSTERS IN THE WORLD

These two young peons, sons of a laborer, recently won the million-dollar prize in the Buenos Aires lottery, backed by the Argentine Government. They seem quite unconcerned about it, too.

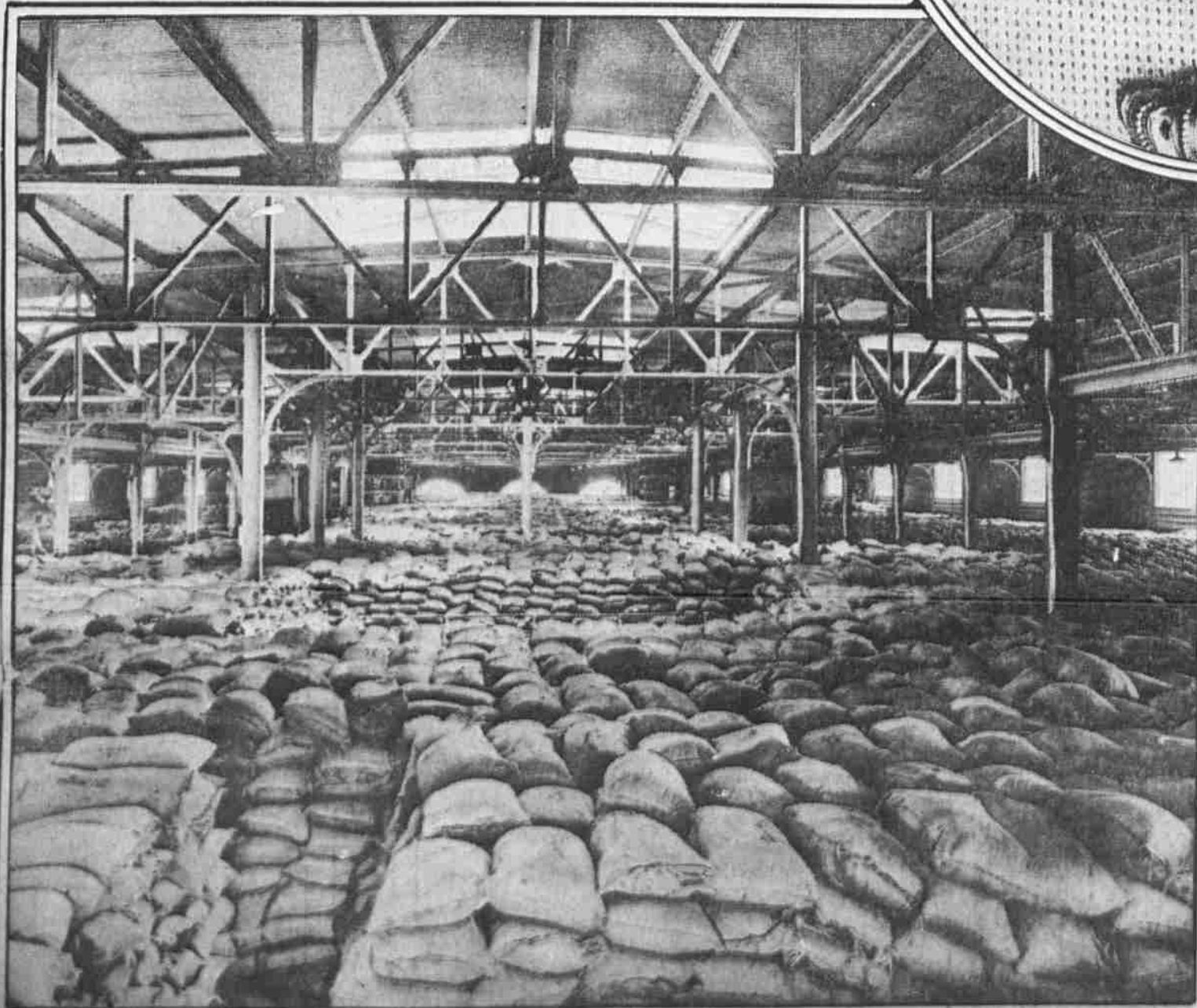
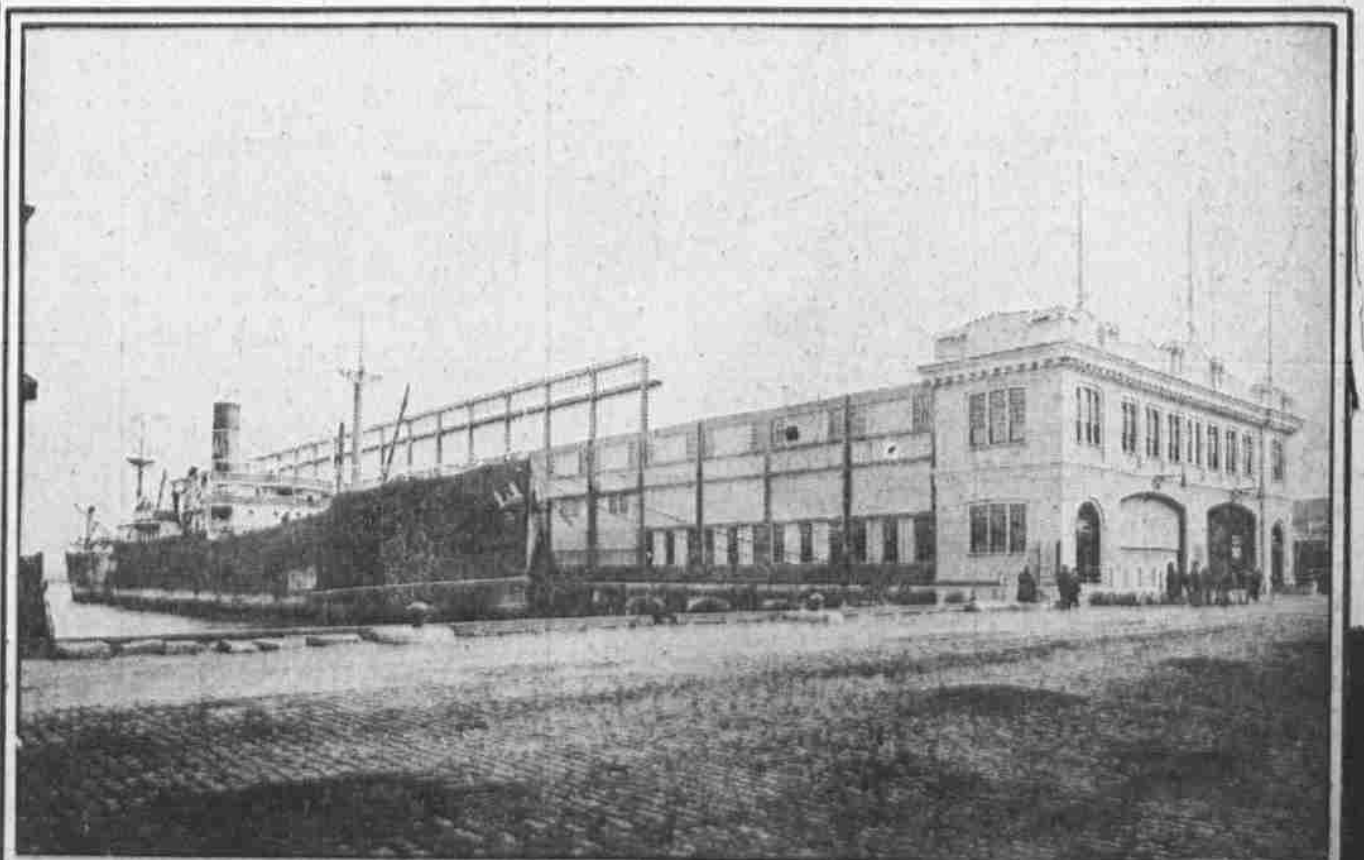


Photo by International Film Service.
FAIR PHILADELPHIAN IN CALIFORNIA
Miss Dorothy de Long, of this city, was one of the participants in the widely heralded charity fete recently held at Coronado beach.



EVIDENCES OF PHILADELPHIA'S POSSIBILITIES AS A PORT ARE REVEALED IN THESE VIEWS OF THE CITY'S MODERN PIERS AND THE HIGH-PILED GOODS THEREIN
On the left is a glimpse of the upper deck of Pier No. 40, South Wharves, which is loaded with 8700 tons of raw sugar ready to go out. On the right is Municipal Pier No. 16, South, which was leased to the Pennsylvania Railroad a few days ago at \$20,000 a year. Within a week after it was leased it contained 8000 tons of freight, and the Japanese steamer *Yokohama* was loading 10,000 tons of merchandise.