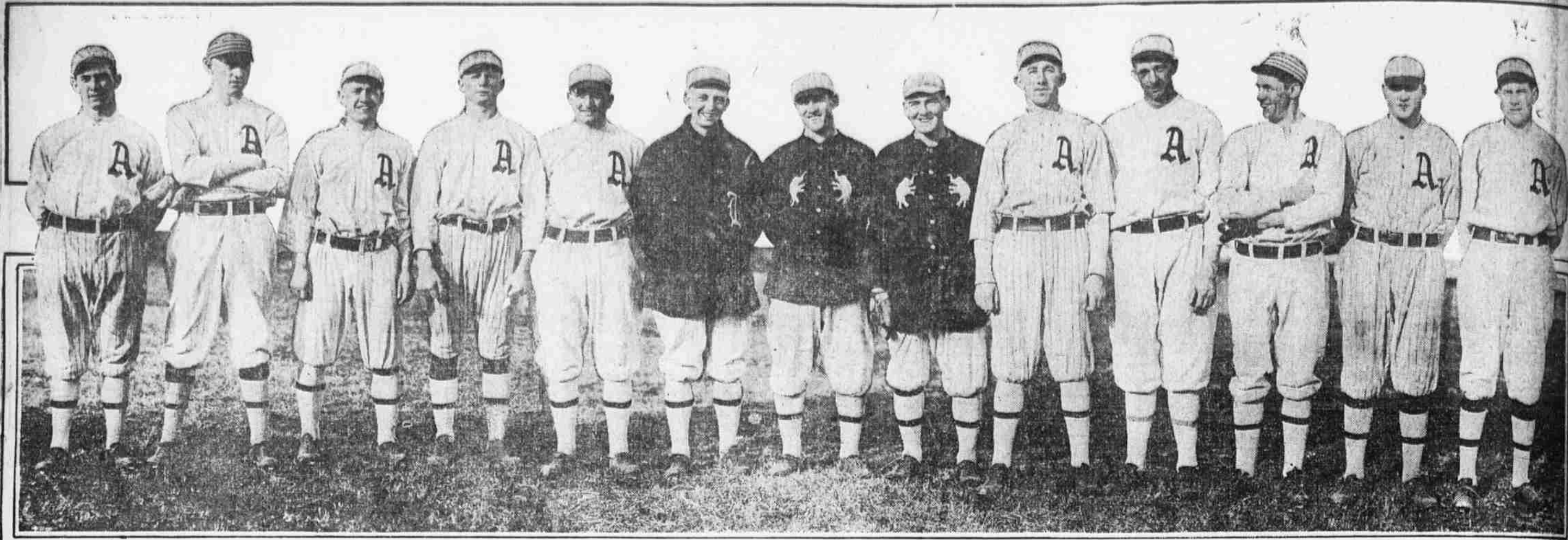


ILLUSTRATED Evening Ledger

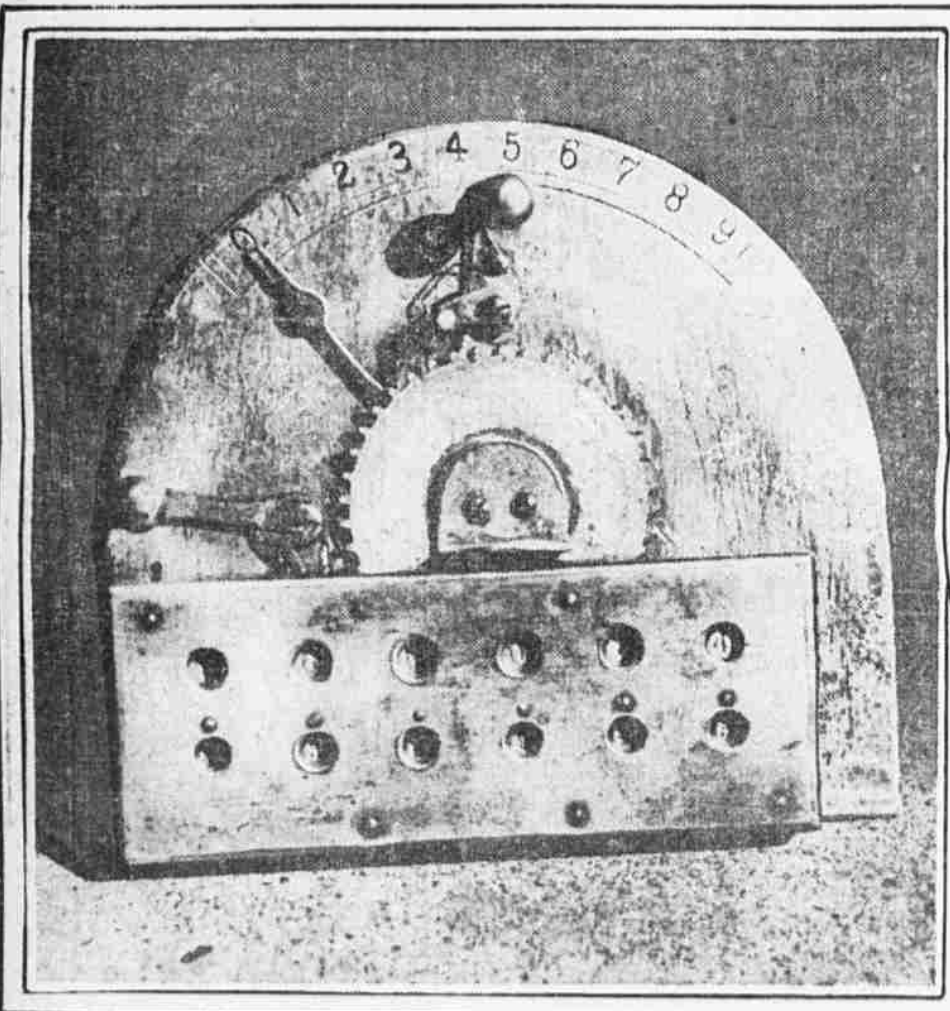
SATURDAY
March 18, 1916

TIMELY SIDELIGHTS ON THE DAY'S OUTPUT OF NEWS FROM A THOUSAND SOURCES



CONNIE MACK'S STRING OF YOUNGSTERS WHO ARE GOING THROUGH A COURSE OF SPROUTS WITH A FEW VETERAN PITCHERS AT THE SPRING TRAINING CAMP AT JACKSONVILLE, FLA.
Left to right: Weaver, Sheehan, Mellinger, Aldworth, Morrisette, Wyckoff, Bush, Bressler, Myers, Nabors, Crowell, Richardson and Parnham.

Photo by Howard P. Kingsmore, Staff Photographer.



FIRST PRACTICAL ADDING MACHINE
It is back in Philadelphia after an absence of 40 years. It was shown at the Centennial. The inventor, F. S. Baldwin, who won the John Scott Gold Medal for inventing it in 1874, is still alive. He lives at Orange, N. J. This machine, his first calculating machine, and the gold medal are on exhibition at the Philadelphia Business Show, which closes tonight.



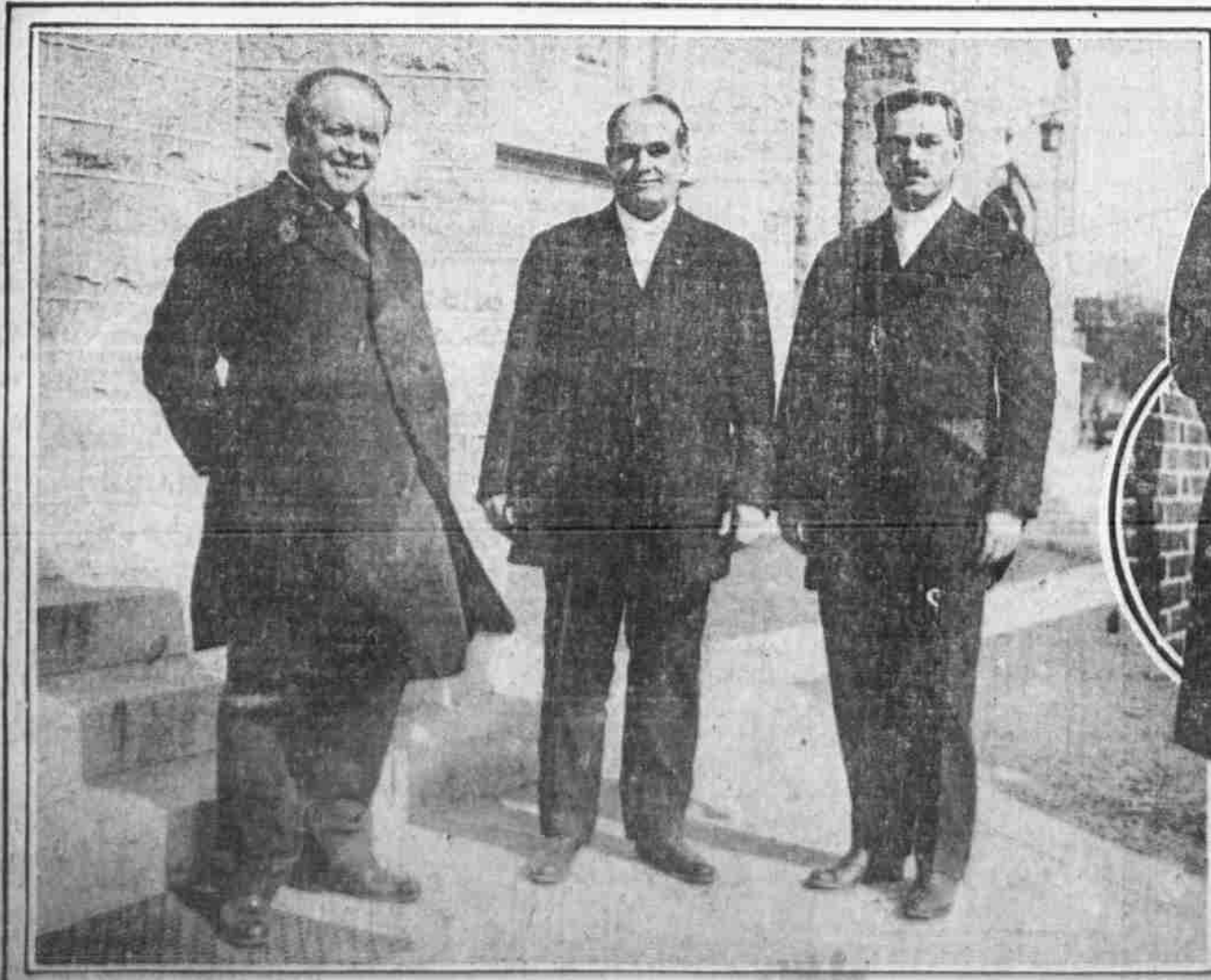
RIDING ON THE BEACH AT ATLANTIC CITY
Miss Betty Ross, of New York, and Miss Marie Furlow are shown on their mounts as they appear daily on the sands at the shore.

Photo by Harper B. Smith.



WREATH FOR WASHINGTON'S STATUE IN PARIS
Ambassador William Sharp is shown reading an address at the ceremonies in the Garden of the Tuileries, which was attended by many Government representatives and prominent citizens.

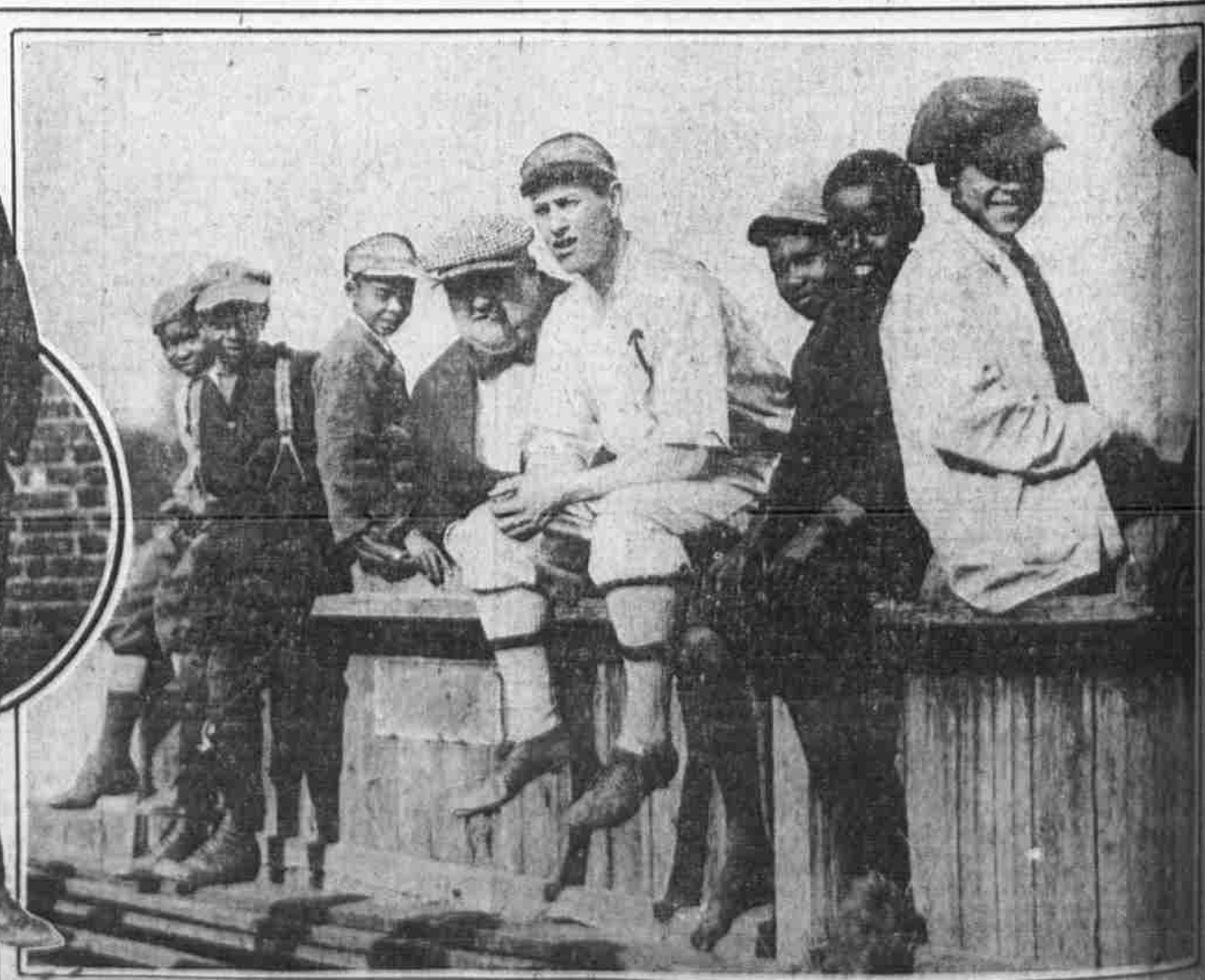
Photo by Madem.



FIRST THREE MINISTERIAL DELEGATES ELECTED TO GENERAL CONFERENCE
Left to right: The Rev. Dr. Alpha G. Kynett, the Rev. Dr. Charles M. Boswell and the Rev. George H. Bickley, who were chosen on the first ballot yesterday by the Philadelphia Conference at Olney.



JOHN MASEFIELD
From a photograph by an EVENING LEDGER staff photographer.



AMONG THE ATHLETICS' FENCE CRITICS AT JACKSONVILLE
Emory Titman, of Philadelphia, largest baseball rooter in the world, and Joe Bush surrounded by the delegation which daily arrives to inspect spring training methods.