

LONDON MARKET QUIET; DEALERS WATCH VERDUN

Leading Dutch Merchant Thinks French Resistance Will Hasten Peace

RUSSIAN MONEY EASY

By FRANCIS W. HIRST Editor The Economist, London Special Cable to Evening Ledger

LONDON, March 9.—A snowstorm has retarded communications in the financial district. The stock exchange is quiet and is watching the French front.

At the annual meeting of the Bradford Association the propriety of West Riding Yorkshire industrial districts being placed in one of cost districts, which is also in Glasgow. They described it as the greatest munition of arms.

The old tariff reform bill has been re-introduced and is being again discussed in the House of Commons. The Government is right in asserting that a tariff is not the road to the greatest wealth.

According to official accounts from Petrograd, Russian money markets, which have been very tight, are becoming more easy to meet.

ENGLISH BANK STATEMENT

LONDON, March 9.—The weekly statement of the Bank of England shows the following changes: Total reserves increased £171,000; circulation increased £28,000; bills discounted £28,000; other securities decreased £3,567,000; other deposits decreased £1,241,000; Government securities unchanged.

LIVE STOCK QUOTATIONS

CHICAGO, March 9.—Receipts: 2,000 market hogs; 10,000 head of cattle; 10,000 head of sheep.

NEW YORK BUTTER AND EGGS

NEW YORK, March 9.—Butter: Market steady. Eggs: Market steady.

THE WEATHER

Official Forecast WASHINGTON, March 9.—For eastern Pennsylvania and New Jersey: Fair and continued mild tonight.

U. S. Weather Bureau Bulletin

Observations taken at 8 a. m., Eastern time.

Station Name, Wind, Clouds, Rain, etc.

Financial Briefs

The Old Dominion Company report for the year ended December 31 shows net income for the year, \$1,389,396; surplus at end of year, \$365,696.

Sales of the F. W. Woolworth Company in February amounted to \$5,348,974, an increase of 18.43 per cent.

The Kelly Springfield Tire Company for the year ended December 31 reports gross profit, \$2,880,089; net operating income, \$1,684,286; and net income of \$1,796,743.

The Standard Screw Company has declared an extra dividend of 6 per cent on the common stock, payable April 1 to holders of record March 20.

The Westinghouse Air Brake Company reported for the six months ended January 31 net profits, exclusive of contracts for munitions, of \$1,183,883, or \$48,530 in excess of dividends.

Railways of the United States earned only 3.93 per cent on their property investment in the last six months of 1915, according to information made public in Chicago today by the Railway Age Gazette.

Stockholders of the Bank of North America took action today to increase the membership of the board of directors as the result of the absorption of the National Bank of the Northern Liberties.

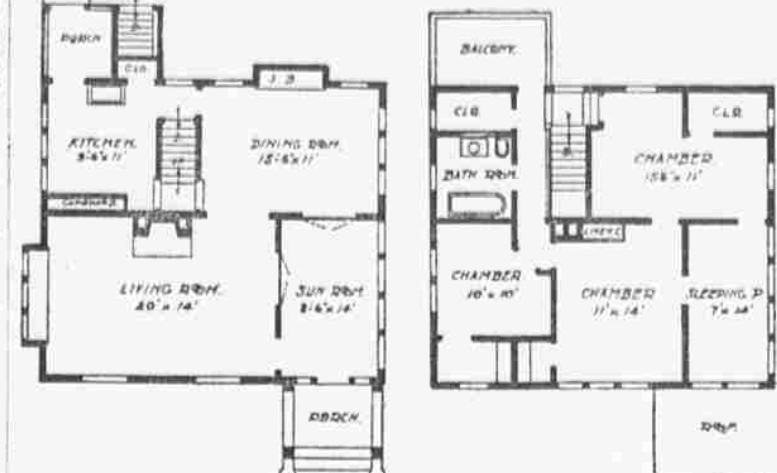
Nearly every boatload of lumber that comes to us arrives on time. Even if the boat's a minute late we DOCK IT!

Edward F. Henson & Co.

PRACTICAL HOMES FOR THE MAN OF MODERATE MEANS



This cottage we are illustrating is suited to a west frontage. It is 30 feet in width and 26 feet 6 inches in depth; there are three good rooms on the first floor exclusive of the glazed sun room and three chambers and sleeping porch on the second floor, also a liberalized bathroom and ample clothes closets.



AN IDEAL COTTAGE

The living room on the left of the sun room is 12 feet by 11 feet with a projecting Dutch window on the north and with a wide and wide, liberal fireplace in the center of the long side. The steps are carried up between the dining room and kitchen with basement stairs underneath.

The main floor is finished in oak with oak floor, and the second story is finished in birch with birch floors. This is a very economical cottage to build and adapted to a city site.

The main floor is finished in oak with oak floor, and the second story is finished in birch with birch floors. This is a very economical cottage to build and adapted to a city site.

WHEAT RALLIED AS SHORTS COVERED

Government Report of Reserves on Farms Discounted—Commission Houses Bought

CHICAGO, March 9.—Buying by a large number of commission houses, which forced shorts to cover, quickly rallied the wheat market today after a weak start.

The Government report on reserves on farms, which was one of the most bullish ever issued, had been discounted.

B. W. Snow, in an analysis of the report, indicated that the total stock in the United States at present amounted to about 500,000,000 bushels, or approximately one-half of the last enormous yield, with new wheat only three months away, and with competing export countries crowding to sell heavy surpluses.

Final prices, however, were below the best, at \$1.13 1/2 for May, against a high point of \$1.17 1/2, and \$1.10 1/2 at the end yesterday, and at \$1.09 1/2 for July, against a high price of \$1.10 1/2 and \$1.08 1/2, yesterday's last quotation.

Leading futures ranged as follows: Wheat—Open, High, Low, Close, Yesterday's.

Wheat—Open, High, Low, Close, Yesterday's. Corn—Open, High, Low, Close, Yesterday's.

Wheat—Open, High, Low, Close, Yesterday's. Corn—Open, High, Low, Close, Yesterday's.

Wheat—Open, High, Low, Close, Yesterday's. Corn—Open, High, Low, Close, Yesterday's.

Wheat—Open, High, Low, Close, Yesterday's. Corn—Open, High, Low, Close, Yesterday's.

Wheat—Open, High, Low, Close, Yesterday's. Corn—Open, High, Low, Close, Yesterday's.

Wheat—Open, High, Low, Close, Yesterday's. Corn—Open, High, Low, Close, Yesterday's.

Wheat—Open, High, Low, Close, Yesterday's. Corn—Open, High, Low, Close, Yesterday's.

Wheat—Open, High, Low, Close, Yesterday's. Corn—Open, High, Low, Close, Yesterday's.

Wheat—Open, High, Low, Close, Yesterday's. Corn—Open, High, Low, Close, Yesterday's.

Wheat—Open, High, Low, Close, Yesterday's. Corn—Open, High, Low, Close, Yesterday's.

Wheat—Open, High, Low, Close, Yesterday's. Corn—Open, High, Low, Close, Yesterday's.

Wheat—Open, High, Low, Close, Yesterday's. Corn—Open, High, Low, Close, Yesterday's.

Wheat—Open, High, Low, Close, Yesterday's. Corn—Open, High, Low, Close, Yesterday's.

Wheat—Open, High, Low, Close, Yesterday's. Corn—Open, High, Low, Close, Yesterday's.

Wheat—Open, High, Low, Close, Yesterday's. Corn—Open, High, Low, Close, Yesterday's.

Wheat—Open, High, Low, Close, Yesterday's. Corn—Open, High, Low, Close, Yesterday's.

Wheat—Open, High, Low, Close, Yesterday's. Corn—Open, High, Low, Close, Yesterday's.

Wheat—Open, High, Low, Close, Yesterday's. Corn—Open, High, Low, Close, Yesterday's.

Wheat—Open, High, Low, Close, Yesterday's. Corn—Open, High, Low, Close, Yesterday's.

DO YOU KNOW WHAT YOU MIGHT BE? HAVE YOU FOUND YOURSELF?

Have You Discovered Your Real Self?—Do you know where to find your own success-power? These questions do not refer to physical endurance, nor to mere intellectual attainments.

Men are not mere animals, nor beasts of burden. There is a vitalizing spirit within them. The better self, the consciousness of strength and intelligence is this power.

We Judge Others Wrongly.—We look to the brain more than to the heart. Men are not mere animals, nor beasts of burden. There is a vitalizing spirit within them.

Principles Should Regulate Your Actions.—All are naturally inclined to be honest, truthful and just. The reason that all men are not honest, truthful and just to themselves and others is that they have lost their vision of the right way.

Know This Inner Power.—When you know where lies your real strength, and know how to find the mighty principle which governs the best impulses, then you are ready to meet every emergency.

Know This Inner Power.—When you know where lies your real strength, and know how to find the mighty principle which governs the best impulses, then you are ready to meet every emergency.

Know This Inner Power.—When you know where lies your real strength, and know how to find the mighty principle which governs the best impulses, then you are ready to meet every emergency.

Know This Inner Power.—When you know where lies your real strength, and know how to find the mighty principle which governs the best impulses, then you are ready to meet every emergency.

Know This Inner Power.—When you know where lies your real strength, and know how to find the mighty principle which governs the best impulses, then you are ready to meet every emergency.

Know This Inner Power.—When you know where lies your real strength, and know how to find the mighty principle which governs the best impulses, then you are ready to meet every emergency.

Know This Inner Power.—When you know where lies your real strength, and know how to find the mighty principle which governs the best impulses, then you are ready to meet every emergency.

Know This Inner Power.—When you know where lies your real strength, and know how to find the mighty principle which governs the best impulses, then you are ready to meet every emergency.

Know This Inner Power.—When you know where lies your real strength, and know how to find the mighty principle which governs the best impulses, then you are ready to meet every emergency.

Know This Inner Power.—When you know where lies your real strength, and know how to find the mighty principle which governs the best impulses, then you are ready to meet every emergency.

Know This Inner Power.—When you know where lies your real strength, and know how to find the mighty principle which governs the best impulses, then you are ready to meet every emergency.

Know This Inner Power.—When you know where lies your real strength, and know how to find the mighty principle which governs the best impulses, then you are ready to meet every emergency.

Know This Inner Power.—When you know where lies your real strength, and know how to find the mighty principle which governs the best impulses, then you are ready to meet every emergency.

Know This Inner Power.—When you know where lies your real strength, and know how to find the mighty principle which governs the best impulses, then you are ready to meet every emergency.

Know This Inner Power.—When you know where lies your real strength, and know how to find the mighty principle which governs the best impulses, then you are ready to meet every emergency.

Know This Inner Power.—When you know where lies your real strength, and know how to find the mighty principle which governs the best impulses, then you are ready to meet every emergency.

Know This Inner Power.—When you know where lies your real strength, and know how to find the mighty principle which governs the best impulses, then you are ready to meet every emergency.

Know This Inner Power.—When you know where lies your real strength, and know how to find the mighty principle which governs the best impulses, then you are ready to meet every emergency.

Know This Inner Power.—When you know where lies your real strength, and know how to find the mighty principle which governs the best impulses, then you are ready to meet every emergency.

Know This Inner Power.—When you know where lies your real strength, and know how to find the mighty principle which governs the best impulses, then you are ready to meet every emergency.

Know This Inner Power.—When you know where lies your real strength, and know how to find the mighty principle which governs the best impulses, then you are ready to meet every emergency.

Know This Inner Power.—When you know where lies your real strength, and know how to find the mighty principle which governs the best impulses, then you are ready to meet every emergency.

Know This Inner Power.—When you know where lies your real strength, and know how to find the mighty principle which governs the best impulses, then you are ready to meet every emergency.

DEATHS

Street Station, P. R. 117, Dr. Kath Street Station, P. R. 116, Fortieth Street, P. and W. Trolley Station, Bridgeport, 12th.

COCHRAN—Suddenly on March 7, 1916, KATHERINE COCHRAN, wife of Andrew Cochran and daughter of the late Alfred J. and Charlotte Wale, Hoboken and friends are invited to attend the funeral services on Friday, at 2:30 p. m., at her late residence, 212 1/2 Penn. st., Germantown. Interment private.

COOK—On March 6, 1916, CATHERINE, widow of John Cook (now letter). Relatives and friends are invited to attend the funeral services on Thursday, at 2 p. m., at the residence of Mrs. Cook, 1200 Chestnut st., at the corner of 12th and Chestnut streets.

DESSALET—On March 8, 1916, JOHN P., husband of Sarah Harbeck Dessalet, relative and friends are invited to attend the funeral services on Saturday, at 2 p. m., at the residence of Mrs. Dessalet, 1200 Chestnut st., at the corner of 12th and Chestnut streets.

DE LANEY—On March 7, 1916, HARRY (1872), husband of Margaret De Laney, relative and friends are invited to attend the funeral services on Saturday, at 2 p. m., at the residence of Mrs. De Laney, 1200 Chestnut st., at the corner of 12th and Chestnut streets.

DRAPER—On March 7, 1916, GEORGE G., husband of Mary Draper, aged 78 years, relative and friends are invited to attend the funeral services on Saturday, at 2 p. m., at the residence of Mrs. Draper, 1200 Chestnut st., at the corner of 12th and Chestnut streets.

DURHAM—On March 7, 1916, JACOB, husband of Anna Durham, relative and friends are invited to attend the funeral services on Saturday, at 2 p. m., at the residence of Mrs. Durham, 1200 Chestnut st., at the corner of 12th and Chestnut streets.

FEIN—On March 7, 1916, MARY E., beloved wife of Patrick Fein, relative and friends are invited to attend the funeral services on Saturday, at 2 p. m., at the residence of Mrs. Fein, 1200 Chestnut st., at the corner of 12th and Chestnut streets.

FINN—On March 6, 1916, MARY E., beloved wife of Patrick Finn, relative and friends are invited to attend the funeral services on Saturday, at 2 p. m., at the residence of Mrs. Finn, 1200 Chestnut st., at the corner of 12th and Chestnut streets.

FISHER—On March 7, 1916, LUTHER A., husband of Mary Fisher, relative and friends are invited to attend the funeral services on Saturday, at 2 p. m., at the residence of Mrs. Fisher, 1200 Chestnut st., at the corner of 12th and Chestnut streets.

GREENE—On March 7, 1916, JOSEPH D., beloved wife of Joseph Greene, relative and friends are invited to attend the funeral services on Saturday, at 2 p. m., at the residence of Mrs. Greene, 1200 Chestnut st., at the corner of 12th and Chestnut streets.

GREENE—On March 7, 1916, JOSEPH D., beloved wife of Joseph Greene, relative and friends are invited to attend the funeral services on Saturday, at 2 p. m., at the residence of Mrs. Greene, 1200 Chestnut st., at the corner of 12th and Chestnut streets.

GREY—On March 7, 1916, EDWARD J., husband of Anna M. Grey, relative and friends are invited to attend the funeral services on Saturday, at 2 p. m., at the residence of Mrs. Grey, 1200 Chestnut st., at the corner of 12th and Chestnut streets.

GREY—On March 7, 1916, EDWARD J., husband of Anna M. Grey, relative and friends are invited to attend the funeral services on Saturday, at 2 p. m., at the residence of Mrs. Grey, 1200 Chestnut st., at the corner of 12th and Chestnut streets.

GREY—On March 7, 1916, EDWARD J., husband of Anna M. Grey, relative and friends are invited to attend the funeral services on Saturday, at 2 p. m., at the residence of Mrs. Grey, 1200 Chestnut st., at the corner of 12th and Chestnut streets.

GREY—On March 7, 1916, EDWARD J., husband of Anna M. Grey, relative and friends are invited to attend the funeral services on Saturday, at 2 p. m., at the residence of Mrs. Grey, 1200 Chestnut st., at the corner of 12th and Chestnut streets.

GREY—On March 7, 1916, EDWARD J., husband of Anna M. Grey, relative and friends are invited to attend the funeral services on Saturday, at 2 p. m., at the residence of Mrs. Grey, 1200 Chestnut st., at the corner of 12th and Chestnut streets.

GREY—On March 7, 1916, EDWARD J., husband of Anna M. Grey, relative and friends are invited to attend the funeral services on Saturday, at 2 p. m., at the residence of Mrs. Grey, 1200 Chestnut st., at the corner of 12th and Chestnut streets.

GREY—On March 7, 1916, EDWARD J., husband of Anna M. Grey, relative and friends are invited to attend the funeral services on Saturday, at 2 p. m., at the residence of Mrs. Grey, 1200 Chestnut st., at the corner of 12th and Chestnut streets.

GREY—On March 7, 1916, EDWARD J., husband of Anna M. Grey, relative and friends are invited to attend the funeral services on Saturday, at 2 p. m., at the residence of Mrs. Grey, 1200 Chestnut st., at the corner of 12th and Chestnut streets.

GREY—On March 7, 1916, EDWARD J., husband of Anna M. Grey, relative and friends are invited to attend the funeral services on Saturday, at 2 p. m., at the residence of Mrs. Grey, 1200 Chestnut st., at the corner of 12th and Chestnut streets.

GREY—On March 7, 1916, EDWARD J., husband of Anna M. Grey, relative and friends are invited to attend the funeral services on Saturday, at 2 p. m., at the residence of Mrs. Grey, 1200 Chestnut st., at the corner of 12th and Chestnut streets.

GREY—On March 7, 1916, EDWARD J., husband of Anna M. Grey, relative and friends are invited to attend the funeral services on Saturday, at 2 p. m., at the residence of Mrs. Grey, 1200 Chestnut st., at the corner of 12th and Chestnut streets.

GREY—On March 7, 1916, EDWARD J., husband of Anna M. Grey, relative and friends are invited to attend the funeral services on Saturday, at 2 p. m., at the residence of Mrs. Grey, 1200 Chestnut st., at the corner of 12th and Chestnut streets.

GREY—On March 7, 1916, EDWARD J., husband of Anna M. Grey, relative and friends are invited to attend the funeral services on Saturday, at 2 p. m., at the residence of Mrs. Grey, 1200 Chestnut st., at the corner of 12th and Chestnut streets.

GREY—On March 7, 1916, EDWARD J., husband of Anna M. Grey, relative and friends are invited to attend the funeral services on Saturday, at 2 p. m., at the residence of Mrs. Grey, 1200 Chestnut st., at the corner of 12th and Chestnut streets.

GREY—On March 7, 1916, EDWARD J., husband of Anna M. Grey, relative and friends are invited to attend the funeral services on Saturday, at 2 p. m., at the residence of Mrs. Grey, 1200 Chestnut st., at the corner of 12th and Chestnut streets.

GREY—On March 7, 1916, EDWARD J., husband of Anna M. Grey, relative and friends are invited to attend the funeral services on Saturday, at 2 p. m., at the residence of Mrs. Grey, 1200 Chestnut st., at the corner of 12th and Chestnut streets.

GREY—On March 7, 1916, EDWARD J., husband of Anna M. Grey, relative and friends are invited to attend the funeral services on Saturday, at 2 p. m., at the residence of Mrs. Grey, 1200 Chestnut st., at the corner of 12th and Chestnut streets.

GREY—On March 7, 1916, EDWARD J., husband of Anna M. Grey, relative and friends are invited to attend the funeral services on Saturday, at 2 p. m., at the residence of Mrs. Grey, 1200 Chestnut st., at the corner of 12th and Chestnut streets.

GREY—On March 7, 1916, EDWARD J., husband of Anna M. Grey, relative and friends are invited to attend the funeral services on Saturday, at 2 p. m., at the residence of Mrs. Grey, 1200 Chestnut st., at the corner of 12th and Chestnut streets.

GREY—On March 7, 1916, EDWARD J., husband of Anna M. Grey, relative and friends are invited to attend the funeral services on Saturday, at 2 p. m., at the residence of Mrs. Grey, 1200 Chestnut st., at the corner of 12th and Chestnut streets.

GREY—On March 7, 1916, EDWARD J., husband of Anna M. Grey, relative and friends are invited to attend the funeral services on Saturday, at 2 p. m., at the residence of Mrs. Grey, 1200 Chestnut st., at the corner of 12th and Chestnut streets.

GREY—On March 7, 1916, EDWARD J., husband of Anna M. Grey, relative and friends are invited to attend the funeral services on Saturday, at 2 p. m., at the residence of Mrs. Grey, 1200 Chestnut st., at the corner of 12th and Chestnut streets.

GREY—On March 7, 1916, EDWARD J., husband of Anna M. Grey, relative and friends are invited to attend the funeral services on Saturday, at 2 p. m., at the residence of Mrs. Grey, 1200 Chestnut st., at the corner of 12th and Chestnut streets.

GREY—On March 7, 1916, EDWARD J., husband of Anna M. Grey, relative and friends are invited to attend the funeral services on Saturday, at 2 p. m., at the residence of Mrs. Grey, 1200 Chestnut st., at the corner of 12th and Chestnut streets.

GREY—On March 7, 1916, EDWARD J., husband of Anna M. Grey, relative and friends are invited to attend the funeral services on Saturday, at 2 p. m., at the residence of Mrs. Grey, 1200 Chestnut st., at the corner of 12th and Chestnut streets.

GREY—On March 7, 1916, EDWARD J., husband of Anna M. Grey, relative and friends are invited to attend the funeral services on Saturday, at 2 p. m., at the residence of Mrs. Grey, 1200 Chestnut st., at the corner of 12th and Chestnut streets.

GREY—On March 7, 1916, EDWARD J., husband of Anna M. Grey, relative and friends are invited to attend the funeral services on Saturday, at 2 p. m., at the residence of Mrs. Grey, 1200 Chestnut st., at the corner of 12th and Chestnut streets.

GREY—On March 7, 1916, EDWARD J., husband of Anna M. Grey, relative and friends are invited to attend the funeral services on Saturday, at 2 p. m., at the residence of Mrs. Grey, 1200 Chestnut st., at the corner of 12th and Chestnut streets.

GREY—On March 7, 1916, EDWARD J., husband of Anna M. Grey, relative and friends are invited to attend the funeral services on Saturday, at 2 p. m., at the residence of Mrs. Grey, 1200 Chestnut st., at the corner of 12th and Chestnut streets.

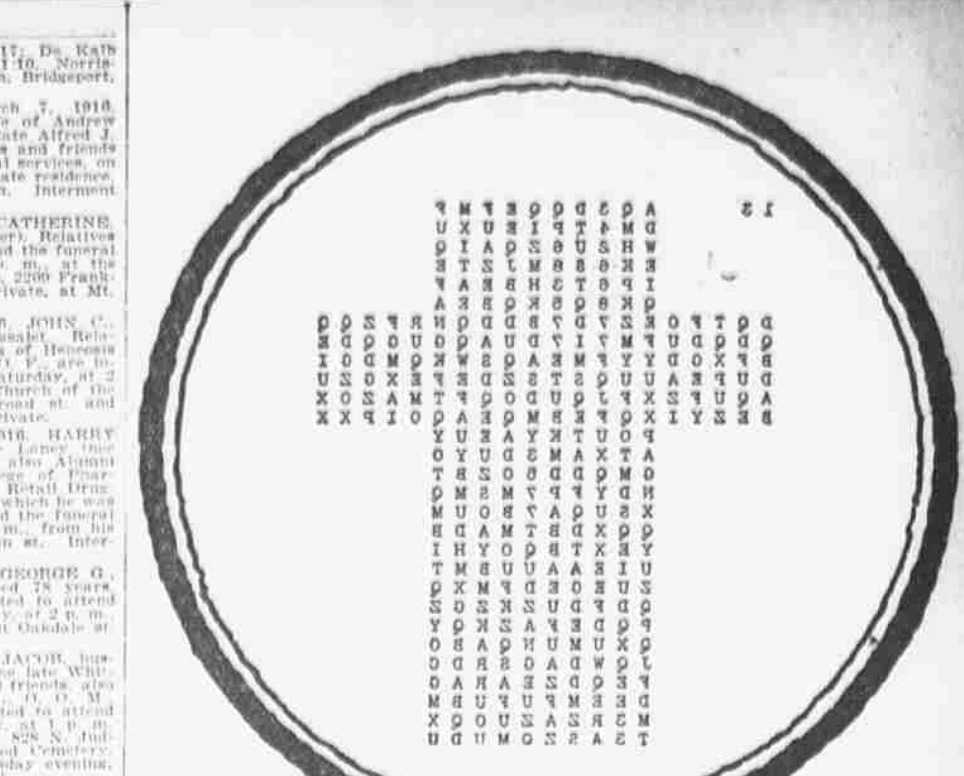
GREY—On March 7, 1916, EDWARD J., husband of Anna M. Grey, relative and friends are invited to attend the funeral services on Saturday, at 2 p. m., at the residence of Mrs. Grey, 1200 Chestnut st., at the corner of 12th and Chestnut streets.

GREY—On March 7, 1916, EDWARD J., husband of Anna M. Grey, relative and friends are invited to attend the funeral services on Saturday, at 2 p. m., at the residence of Mrs. Grey, 1200 Chestnut st., at the corner of 12th and Chestnut streets.

GREY—On March 7, 1916, EDWARD J., husband of Anna M. Grey, relative and friends are invited to attend the funeral services on Saturday, at 2 p. m., at the residence of Mrs. Grey, 1200 Chestnut st., at the corner of 12th and Chestnut streets.

GREY—On March 7, 1916, EDWARD J., husband of Anna M. Grey, relative and friends are invited to attend the funeral services on Saturday, at 2 p. m., at the residence of Mrs. Grey, 1200 Chestnut st., at the corner of 12th and Chestnut streets.

GREY—On March 7, 1916, EDWARD J., husband of Anna M. Grey, relative and friends are invited to attend the funeral services on Saturday, at 2 p. m., at the residence of Mrs. Grey, 1200 Chestnut st., at the corner of 12th and Chestnut streets.



\$100 IF YOU SOLVE IT!

This cryptogram contains a skilfully concealed message. If you can correctly decipher it 'mid the queer reversed letters and figures its owner will pay you \$100 in gold.

Read how he got the cryptogram:-

Wednesday Night.

Sir—We need \$5000. You need information we possess about your mills and iron works in Kensington. Our documents for sale came from a black portmanteau lost a month ago \* \* \* in the Market street subway.

INSTRUCTIONS.

Put \$5000 in a shoe box. Wrap the box carefully; tie it well; check it in the parcel room of the Broad Street Station. Be on the southwest corner of Broad and Chestnut streets alone, at 12 o'clock Thursday morning with the parcel check. A messenger boy will give you a check in exchange for the one you hold. This check will show where you are to go for the original documents taken from the lost black portmanteau.

The moment you make a move to apprehend us or break your pledged word all bets are off.

A FRIEND.

Can you solve it? It means much to the man who paid \$5000 for it. He will gladly pay

\$100 for the first correct solution.

His name is

MONTICRISPEN

These Notices Are Printed in the Evening Ledger Free of Charge.

REIVE—On March 8, 1916, NATHAN L., husband of Mary Reive, relative and friends are invited to attend the funeral services on Saturday, at 2 p. m., at the residence of Mrs. Reive, 1200 Chestnut st., at the corner of 12th and Chestnut streets.

REIVE—On March 8, 1916, NATHAN L., husband of Mary Reive, relative and friends are invited to attend the funeral services on Saturday, at 2 p. m., at the residence of Mrs. Reive, 1200 Chestnut st., at the corner of 12th and Chestnut streets.

REIVE—On March 8, 1916, NATHAN L., husband of Mary Reive, relative and friends are invited to attend the funeral services on Saturday, at 2 p. m., at the residence of Mrs. Reive, 1200 Chestnut st., at the corner of 12th and Chestnut streets.

REIVE—On March 8, 1916, NATHAN L., husband of Mary Reive, relative and friends are invited to attend the funeral services on Saturday, at 2 p. m., at the residence of Mrs. Reive, 1200 Chestnut st., at the corner of 12th and Chestnut streets.

REIVE—On March 8, 1916, NATHAN L., husband of Mary Reive, relative and friends are invited to attend the funeral services on Saturday, at 2 p. m., at the residence of Mrs. Reive, 1200 Chestnut st., at the corner of 12th and Chestnut streets.

REIVE—On March 8, 1916, NATHAN L., husband of Mary Reive, relative and friends are invited to attend the funeral services on Saturday, at 2 p. m., at the residence of Mrs. Reive, 1200 Chestnut st., at the corner of 12th and Chestnut streets.

RE