



GRAPHIC SIDELIGHTS ON THE VARIED NEWS OF THE DAY AS REVEALED BY THE CAMERA

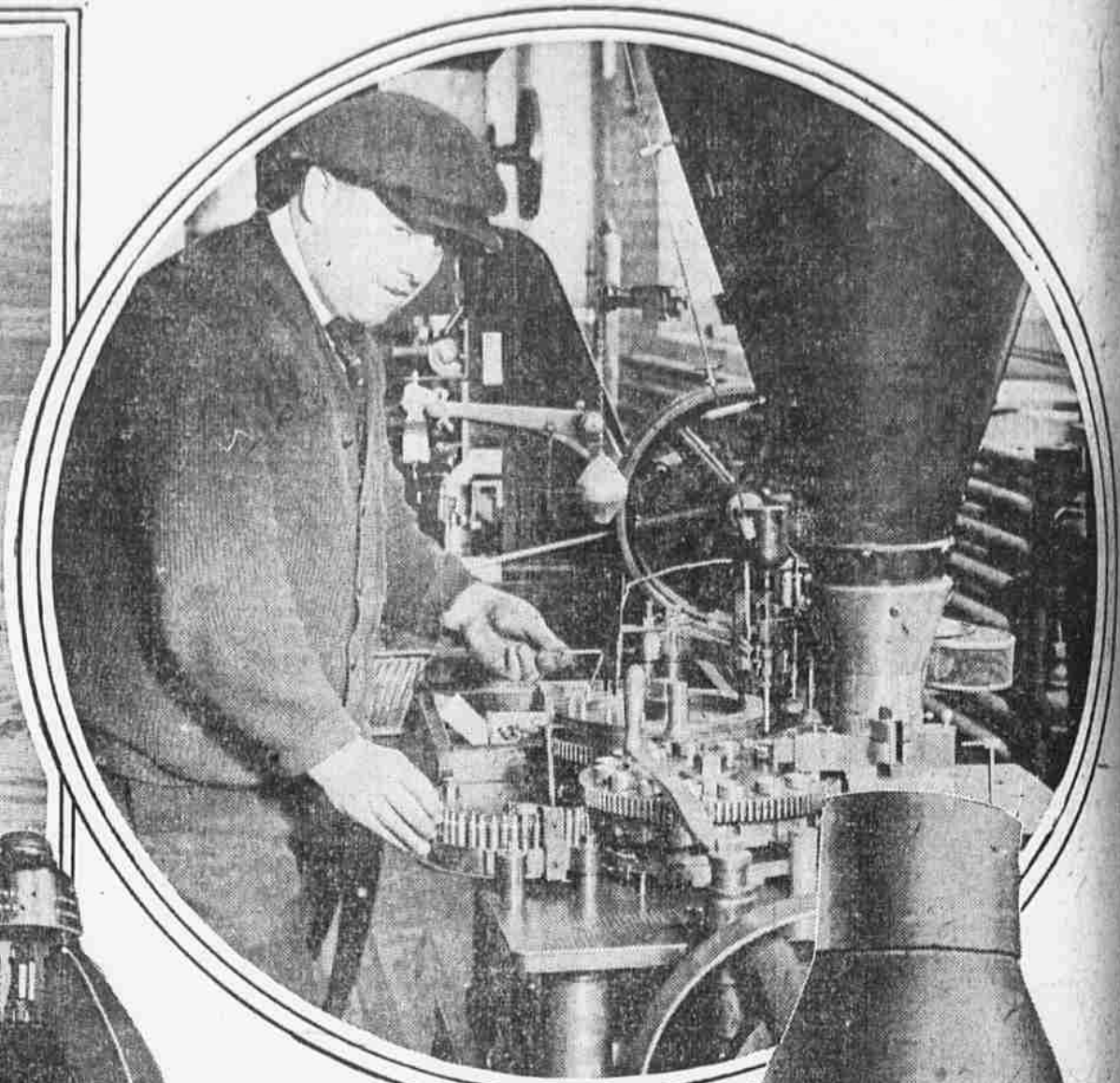
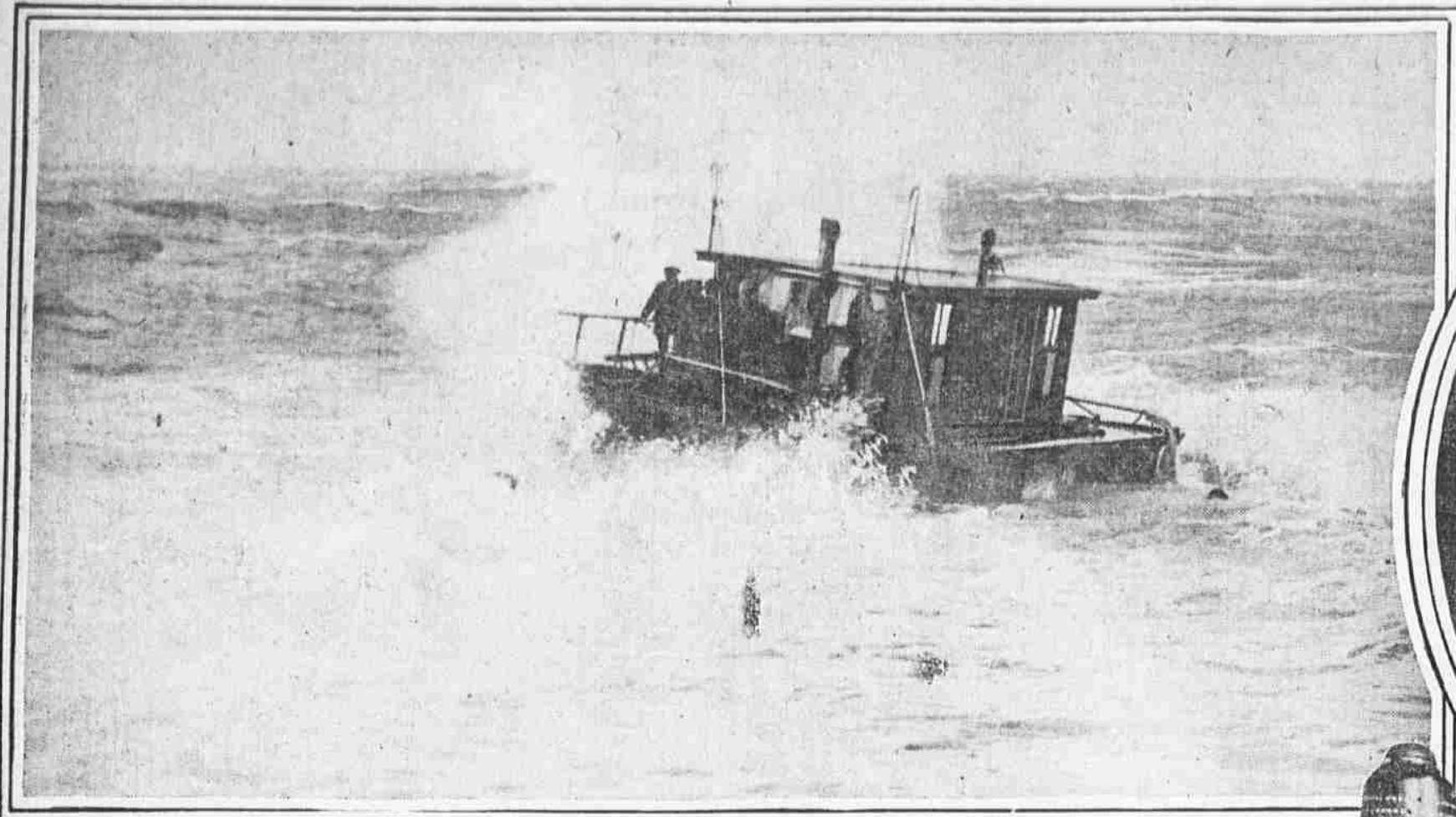
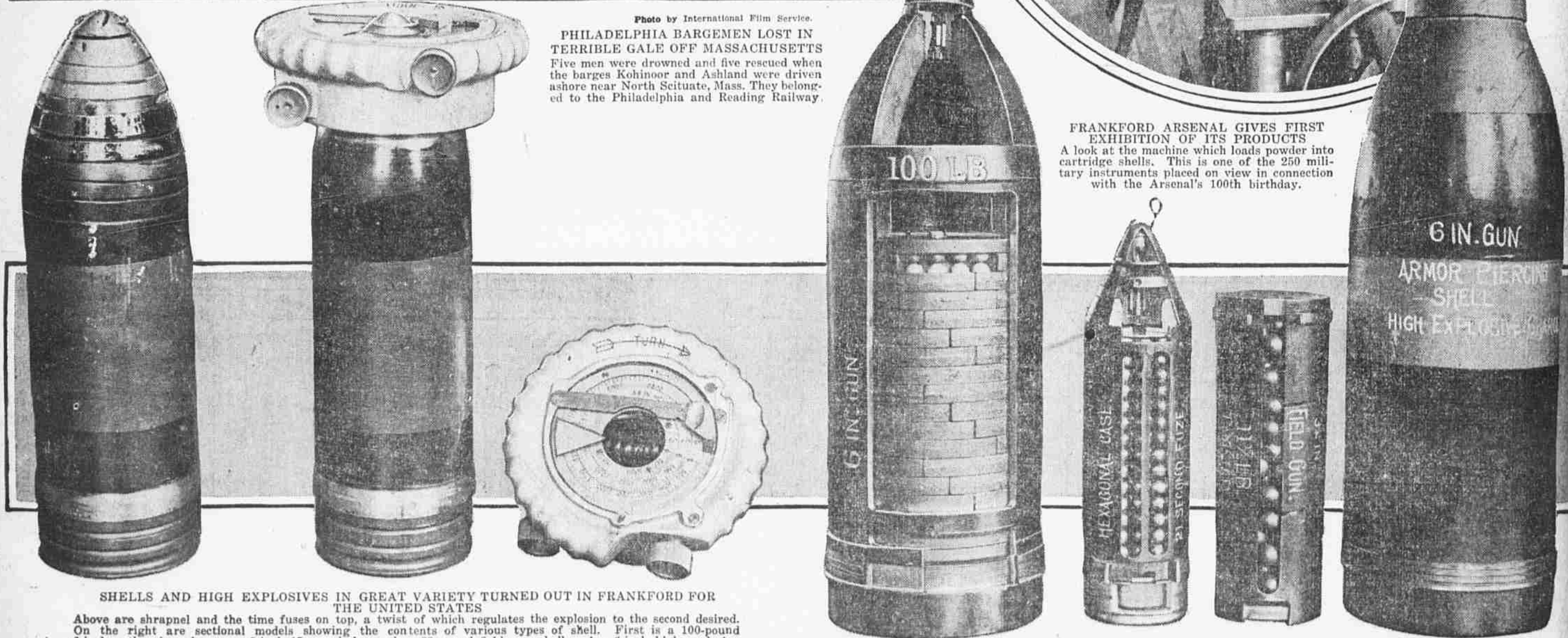
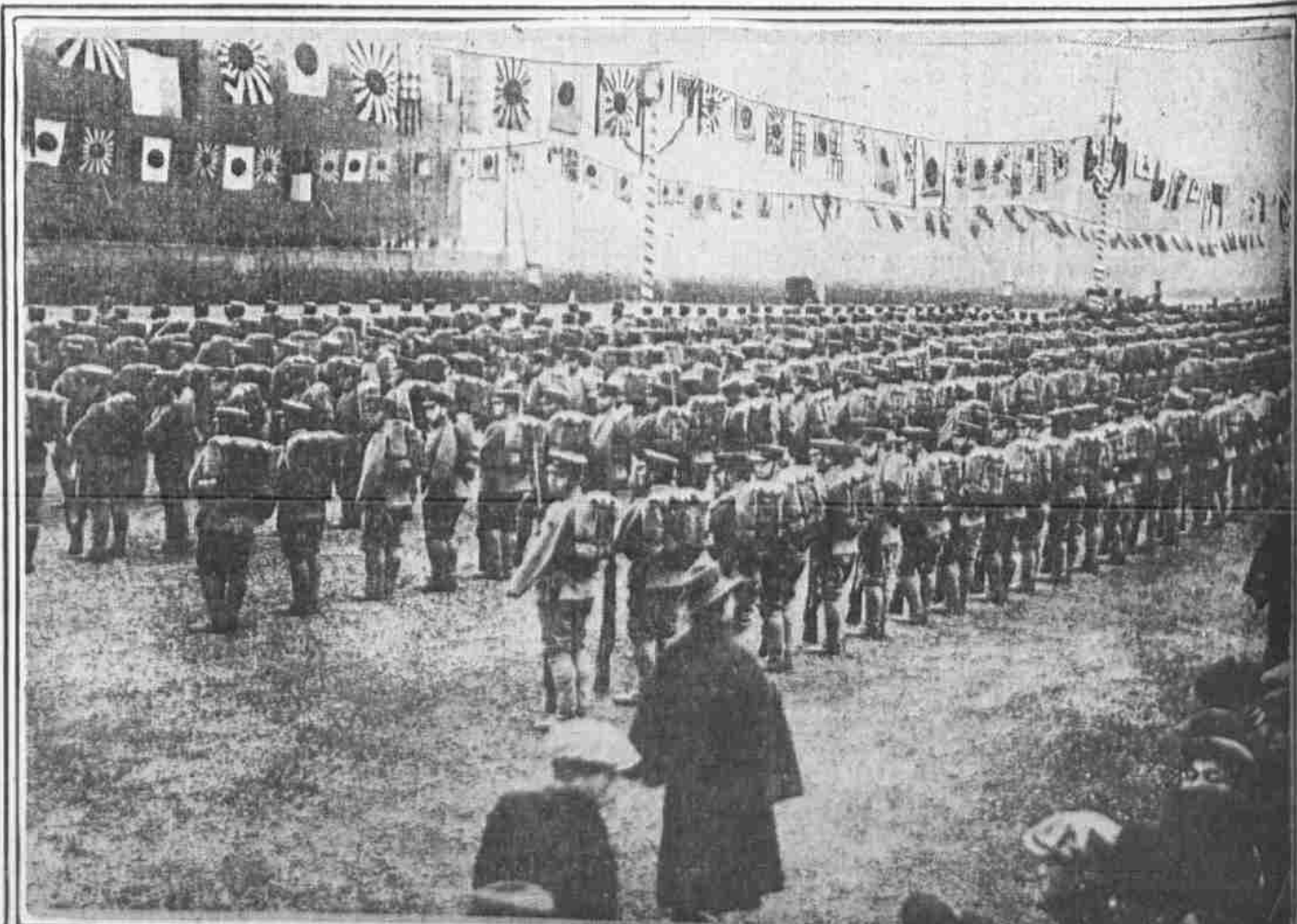


Photo by International Film Service.
PHILADELPHIA BARGEMEN LOST IN TERRIBLE GALE OFF MASSACHUSETTS
Five men were drowned and five rescued when the barges Kohinoor and Ashland were driven ashore near North Scituate, Mass. They belonged to the Philadelphia and Reading Railway.

FRANKFORD ARSENAL GIVES FIRST EXHIBITION OF ITS PRODUCTS
A look at the machine which loads powder into cartridge shells. This is one of the 250 military instruments placed on view in connection with the Arsenal's 100th birthday.



SHELLS AND HIGH EXPLOSIVES IN GREAT VARIETY TURNED OUT IN FRANKFORD FOR THE UNITED STATES
Above are shrapnel and the time fuses on top, a twist of which regulates the explosion to the second desired. On the right are sectional models showing the contents of various types of shell. First is a 100-pound 6-incher, then in order are a 3-inch 15-pound shrapnel, a 32-pound field gun shell and a 6-inch high explosive armor-piercing naval shell.



JAPAN PAYS OFFICIAL HONORS TO RUSSIAN GRAND DUKE GEORGE MICHAELOVITCH ON VISIT TO WHICH MUCH DIPLOMATIC SIGNIFICANCE IS ATTACHED
On the left is the Grand Duke, accompanied by a priest of the Russian Church, as he arrived in Tokio. On the right are soldiers of two Japanese regiments drawn up at a review held in the Duke's honor. The Grand Duke is supposed to have been empowered to arrange a closer friendship with Japan and especially to carry his country's thanks to the island which has been Russia's chief source of ammunition since the great war began.