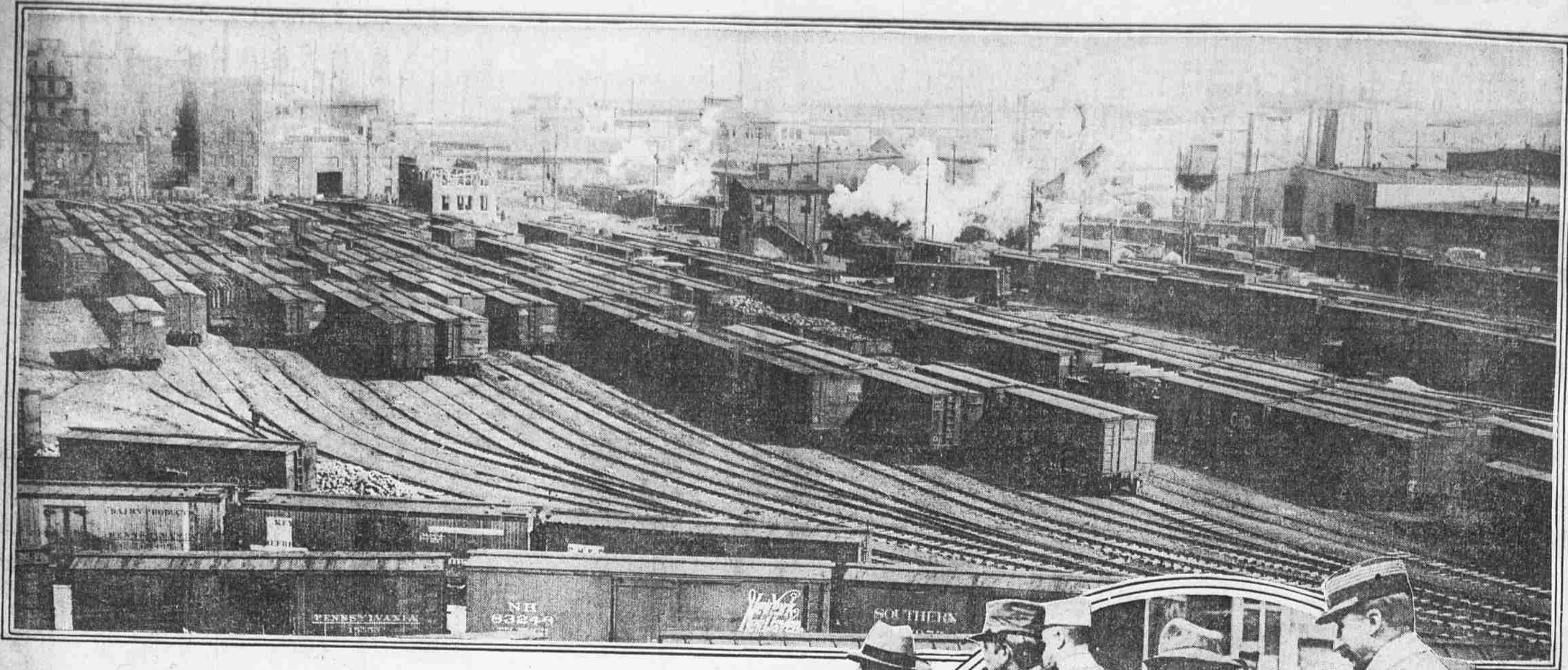




ILLUSTRATED Evening Ledger

TUESDAY
February 29, 1916

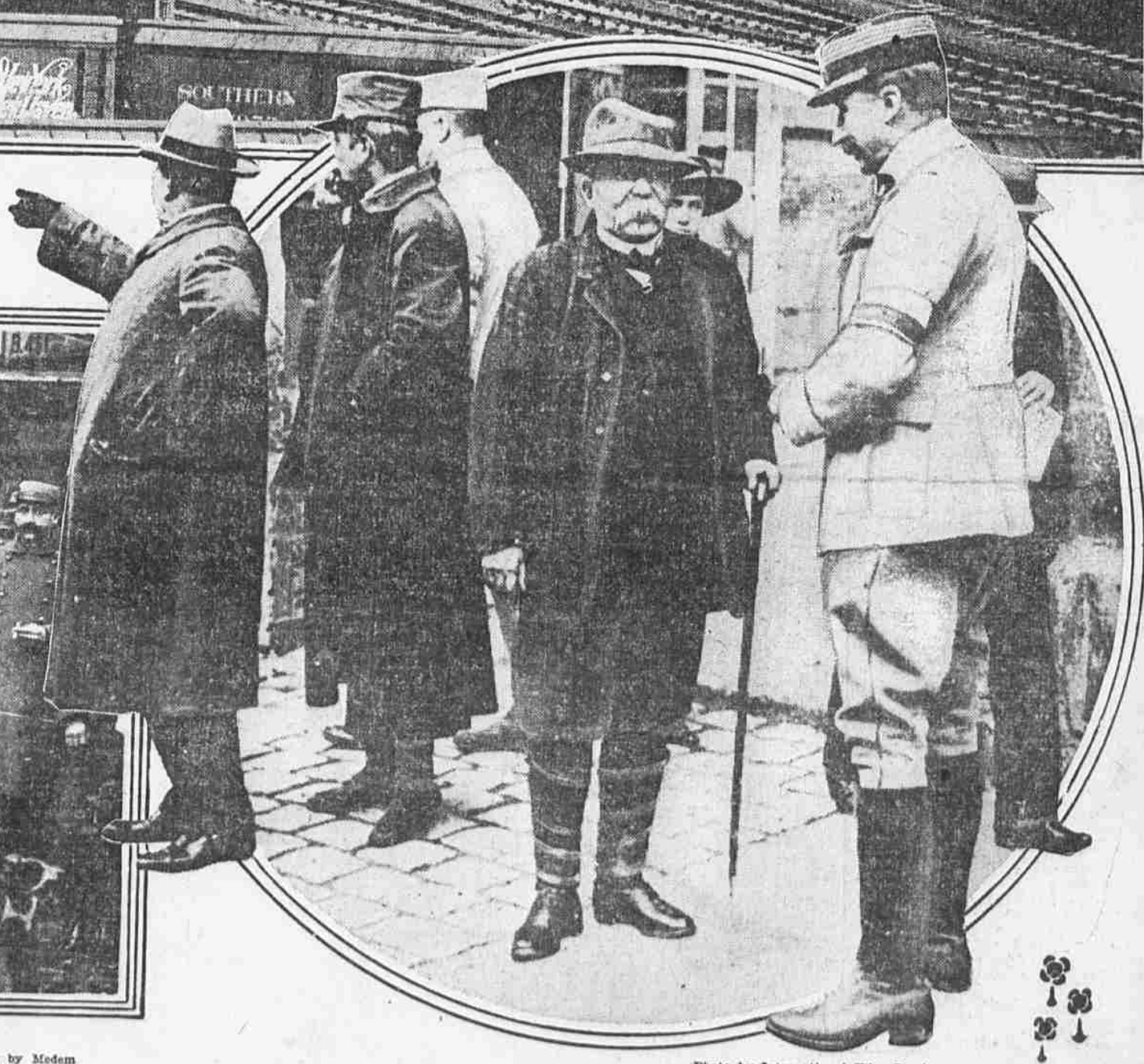
PICTURES FROM HOME AND ABROAD THROW TIMELY SIDELIGHTS ON THE DAY'S ASSORTED NEWS



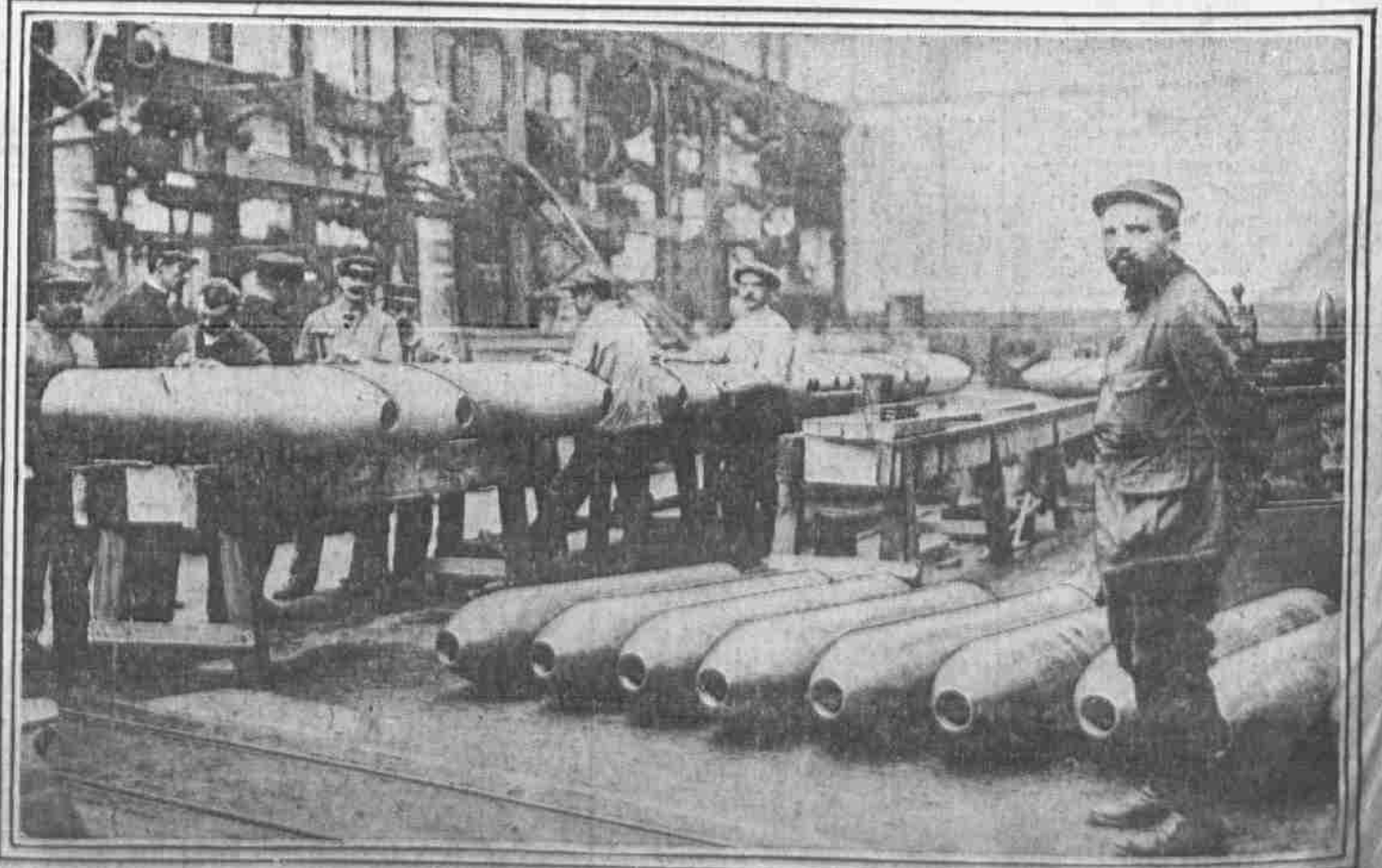
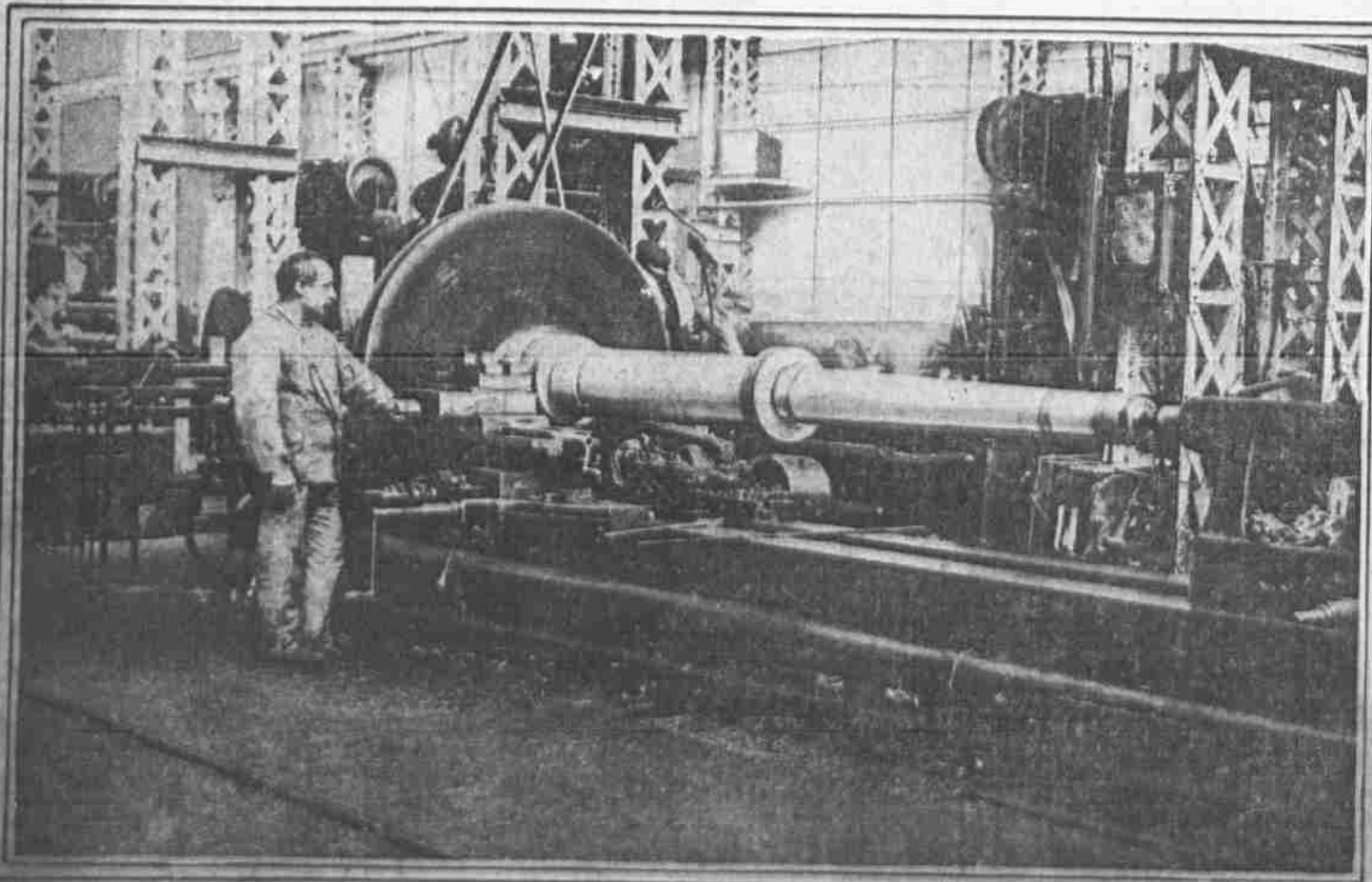
PART OF THE 6196 LOADED FREIGHT CARS NOW TIED UP IN THIS CITY
This picture, taken at Front and Reed streets, reveals the unprecedented congestion of traffic at present prevailing, causing the Pennsylvania Railroad to announce an embargo on all shipments except foodstuffs. There are 237 cars held up along the waterfront awaiting delivery to steamships.



FRENCH VETERANS FROM ONE SECTOR SEE TROPHIES CAPTURED IN ANOTHER
These soldiers are on leave from the Artois front, and are viewing at the Place des Invalides in Paris the trench mortars and bomb-throwers taken from the Germans by their comrades in the Champagne. *Photo by Medem*



CLEMENCEAU RETURNS FROM VISIT TO VERDUN
France's most noted publicist and editor paid a visit to the fortress shortly before the present German attack began. He is shown returning from a conference with General Castelnau, who planned Verdun's new defenses. *Photo by International Film Service*



FRANCE'S FAMOUS GUN WORKS RUSHES NEWLY DESIGNED GUNS AND HEAVY SHELLS TO COMPLETION IN PREPARATION FOR DRIVE IN THE SPRING.
Some experts believe that the present German attacks in the Woëvre, Champagne and Artois regions are being made to forestall the French efforts which are expected with the advent of milder weather. At the Creusot works enormous supplies of artillery and ammunition are being turned out. At the left a 175-millimetre gun is being bored out, while on the right inspectors are going over the latest crop of heavy shells, each of which is about five times the weight of an average man. *Photo by Medem*