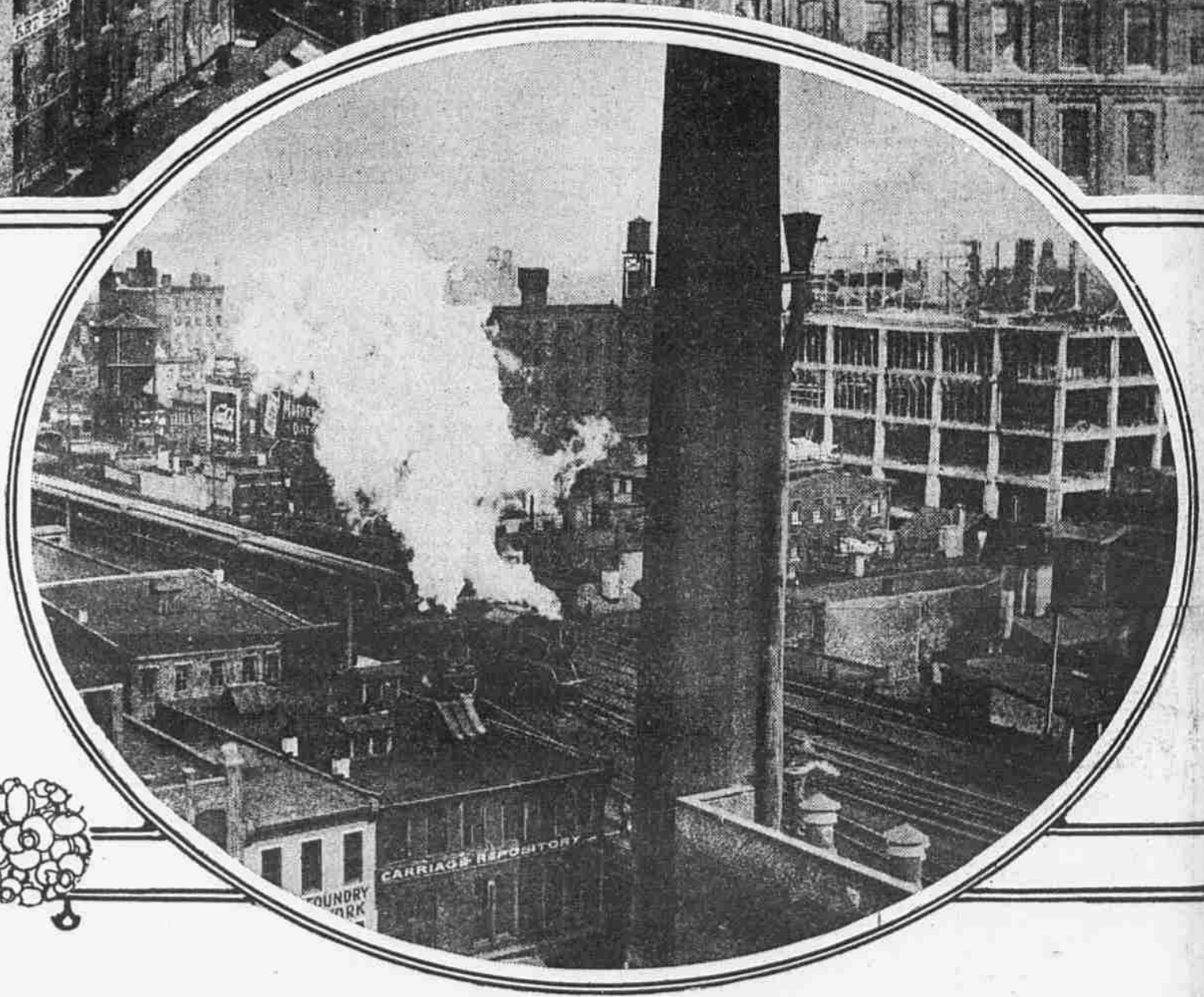




GLIMPSES OF INDUSTRIAL PHILADELPHIA UNDER ITS EVER-PRESENT CANOPY OF SMOKE AND STEAM



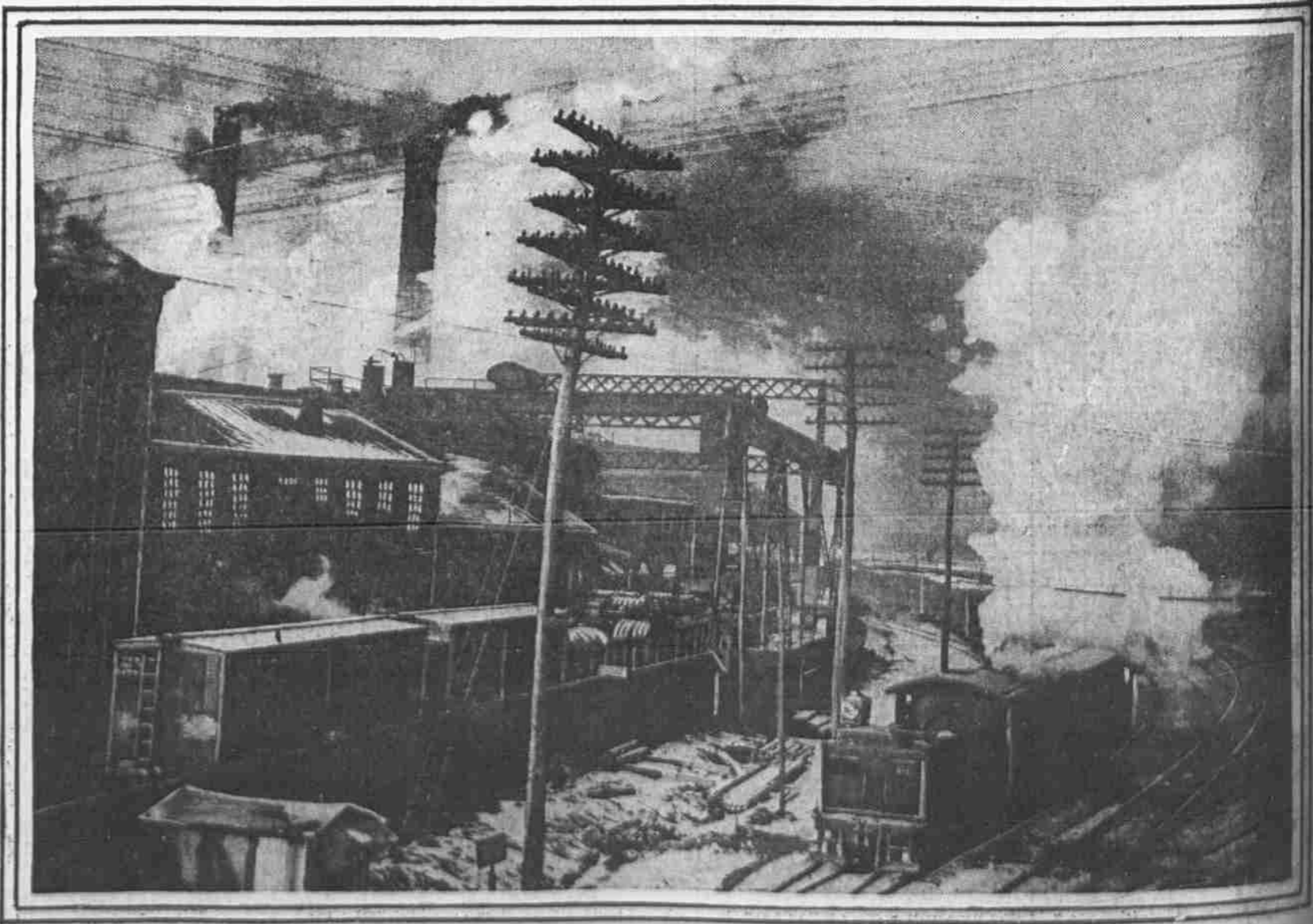
IN THE HEART OF KENSINGTON'S TEXTILE MANUFACTURING DISTRICT
AT THIRD STREET AND LEHIGH AVENUE



THE READING TRACKS FROM THE EIGHTH FLOOR OF THE PEOPLE'S
TRUST BUILDING



LOOKING DOWN ON THE PENNSYLVANIA RAILROAD'S TRACKS FROM
THE SPRING GARDEN STREET BRIDGE



A CORNER OF THE MIDVALE STEEL WORKS IN NICETOWN