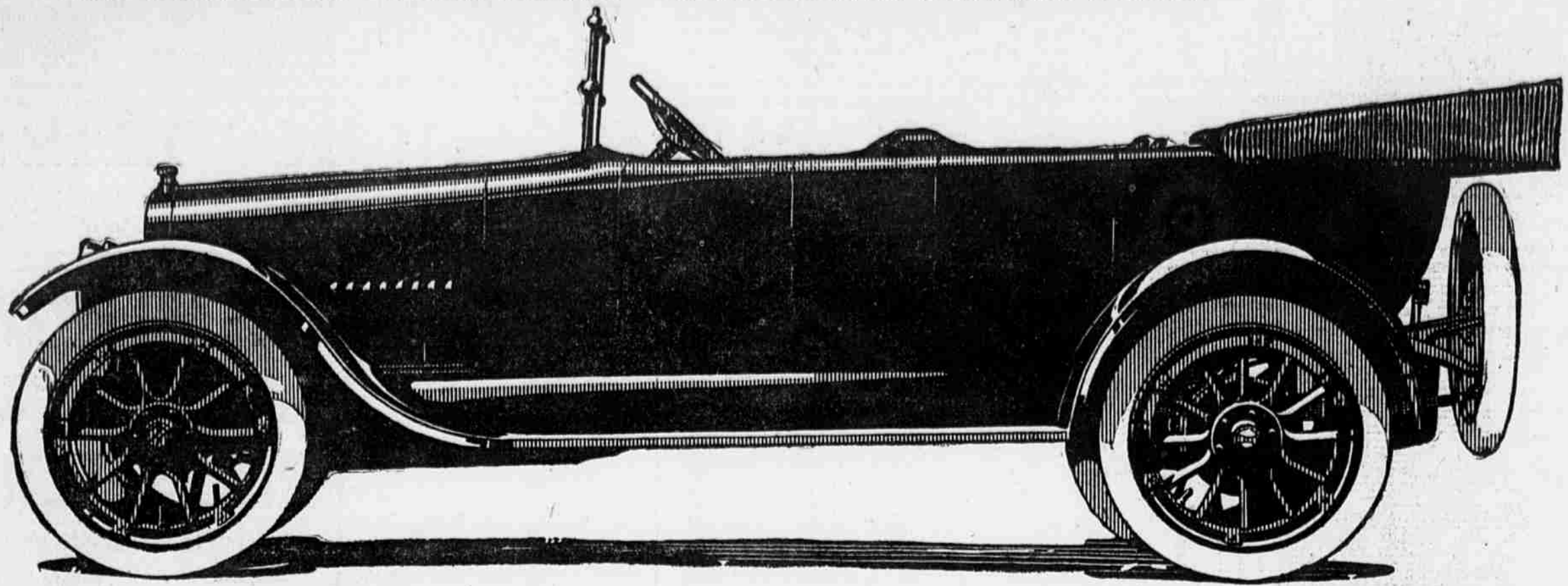


A NEW and GREATER CHANDLER SIX

\$1295

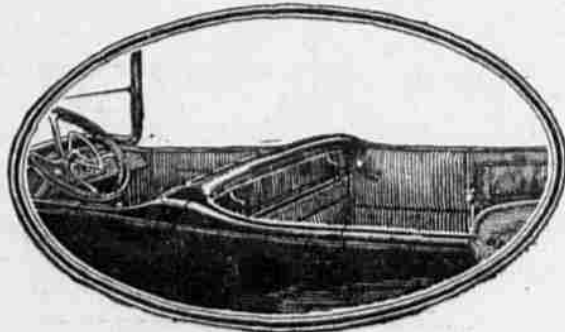
**Longer Wheelbase—Handsome and Roomier Body
The Same Marvelous Motor—Greater and Unusual Power**



THE price of the new model Chandler Six—the leading six—is \$1295. The Chandler is built for the thousands of men and women who are ready now to buy this great car at this low price. It offers the motor-car quality they demand at a price that pleases them. We are proud that with steel and aluminum and leather and all other motor car materials so high we can sell the Chandler for a price so low. Yes, there are lower prices, but there is no price so low for such a car. We could build a cheap car. That would be easy. But it would be a problem, indeed, to build a better car. We could build a small car, but the people who want the Chandler want roominess, power, sturdy construction and style. So we build the best six cylinder car in the world—then we fix the price as low as it can be made.

THIS policy has made the Chandler a price-pioneer in the quality six-cylinder field. This policy put on the market three years ago this month the first high-grade six selling for less than \$2000,—the \$1785 Chandler. This policy reduced that price a year later to \$1595, and this policy brings you now this Greater Six for \$1295.

"Large production" cannot be the explanation of any lower price than the Chandler price. For our 20,000 car production for this year is large enough—and more, too—to earn lowest costs.



The Walnut-Paneled Tonneau Cowl

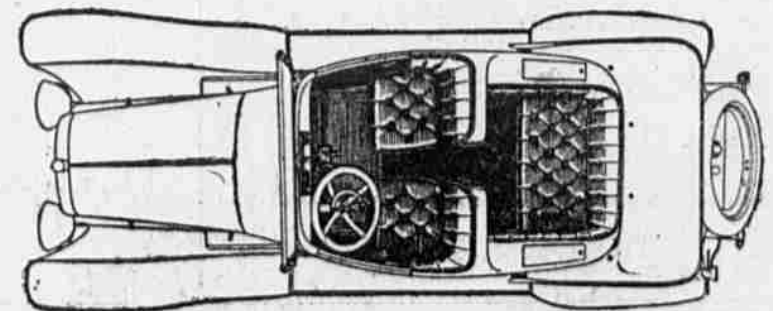
POWER Ample to take this car, loaded, anywhere that any automobile can go.

SPEED More than 999 out of every thousand car owners would ever want or dare to use.

MOTOR The Marvelous Chandler Motor—built in the Chandler factory for three years past and famous the world over. FREE FROM ANY HINT OF EXPERIMENTATION.

"Low overhead" cannot explain any lower price, for engineers and manufacturing experts and other car builders marvel at the simplicity and economy of our factory operations.

"Financial strength" cannot explain any lower price, for the Chandler Company's resources are extremely large, as nearly everyone now knows. So we have reason to be proud of the Chandler price, just as we are proud of This Greater Six.



Seating Arrangement, Chandler 4-Passenger Roadster

**Most Beautiful of All New Motor Car Bodies; Before the Season's Over
Any Other Type Will Be Out of Date**

Chandler Mechanical Excellence Admitted

Every one knows the Chandler pretty well now from the mechanical standpoint. Every one knows how Chandler pioneered the Light Six field—long in advance of any other six at a price less than \$2,000. Every one knows how the Chandler has made good right from the beginning.

The Chandler is almost everywhere in America now. Thousands of them, from coast to coast, in the hands of happy owners. So, we say, you know the mechanical excellence of this car. Now know the handsome new Chandler bodies.

The big seven-passenger car, with new body and walnut paneled tonneau cowl, is simply a delight. In grace of line we do not believe there is any other car to match it. You must see the car itself to know just how much we mean when we say it is the handsomest car of the year. We cannot describe it. The car itself makes any attempt at describing it seem futile.

Room to Spare—A Comfort Margin

There are a good many automobiles with seats, but not room, for seven persons. The big Chandler is a real seven-passenger car. There's room to spare—a comfort margin. The seats are wide and tilted a bit, and every one speaks of the "leg-room."

The interior finish, too, is in keeping with the rest of the car. The deep, pillowy hair cushions, upholstered in the new long-grain, semi-glazed leather, the walnut paneled tonneau cowl and all the other niceties of finish and completeness, reflect the Chandler Company's thought for your comfort and your sense of style.

So come now and see this car. We have the new Chandlers ready for inspection and demonstration, and can give you delivery at any time you designate, provided you place your order now.

Interesting Chandler Features

Body Finish—Chandler blue, high finish. Fenders, wheels and motor hood black. Deep cushioned upholstery covered with long-grain, semi-glazed leather.

Equipment—Highest grade equipment is a feature of the Chandler now as always, including Bosch High-Tension Magneto, Gray & Davis separate unit Electric Starting and Lighting System, Chandler aluminum crank case, Chandler full-floating silent spiral-bevel-gear rear axle, silent chain drive for motor shafts, annular ball bearings, Stewart-Warner Magnetic Speedometer, Stewart Vacuum Gasoline Feed, Non-skid Tires in the rear, and all the usual incidental items.

**We Want Everyone to Come and See the Big New Chandler Touring Car
and the New Chandler Four-Passenger Roadster**

W. P. HERBERT
N. E. Corner Broad and Race Streets

Bell Phone—Walnut 112.

CHANDLER MOTOR CAR CO., CLEVELAND, OHIO