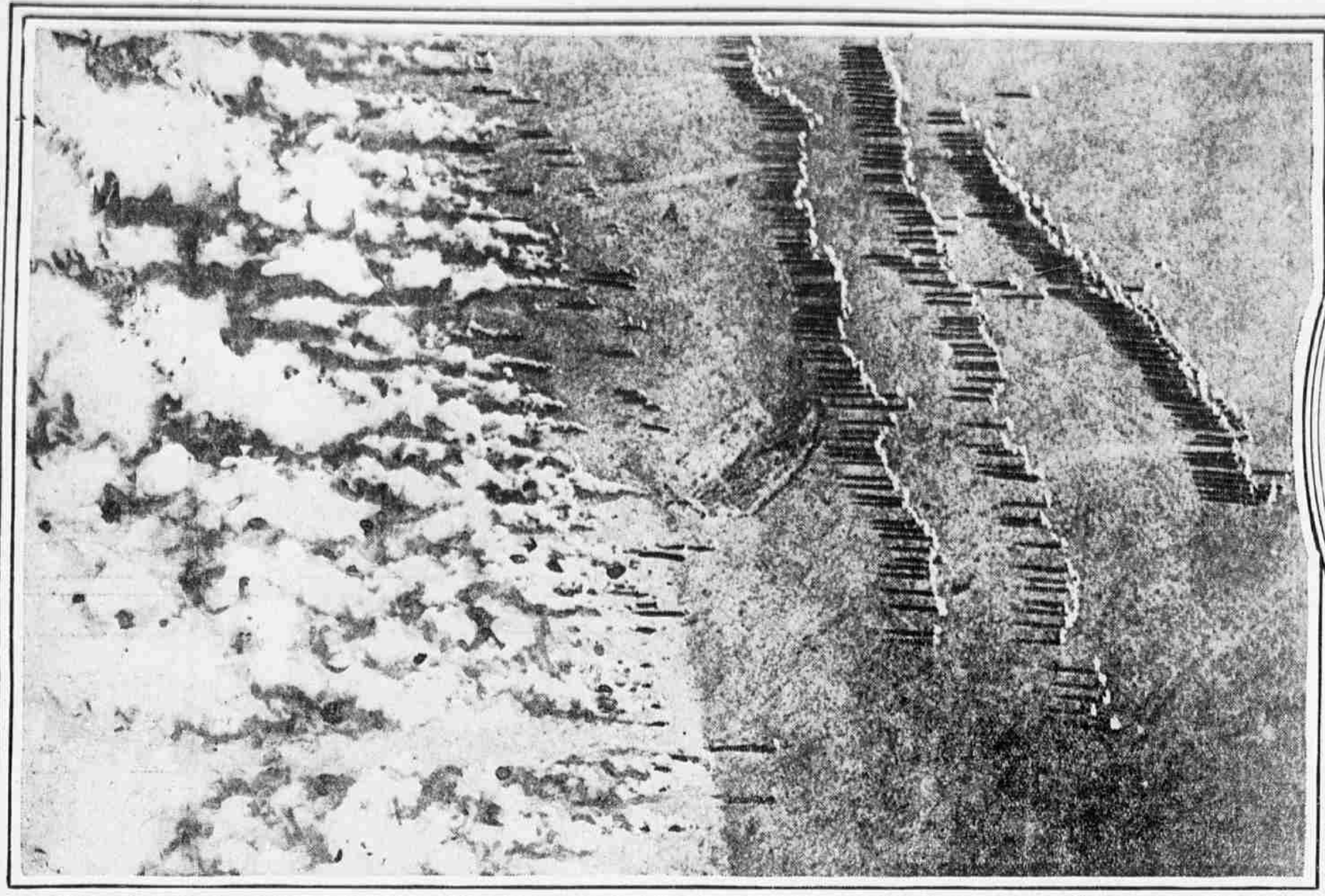


ILLUSTRATED Evening Ledger

TUESDAY
December 28, 1915

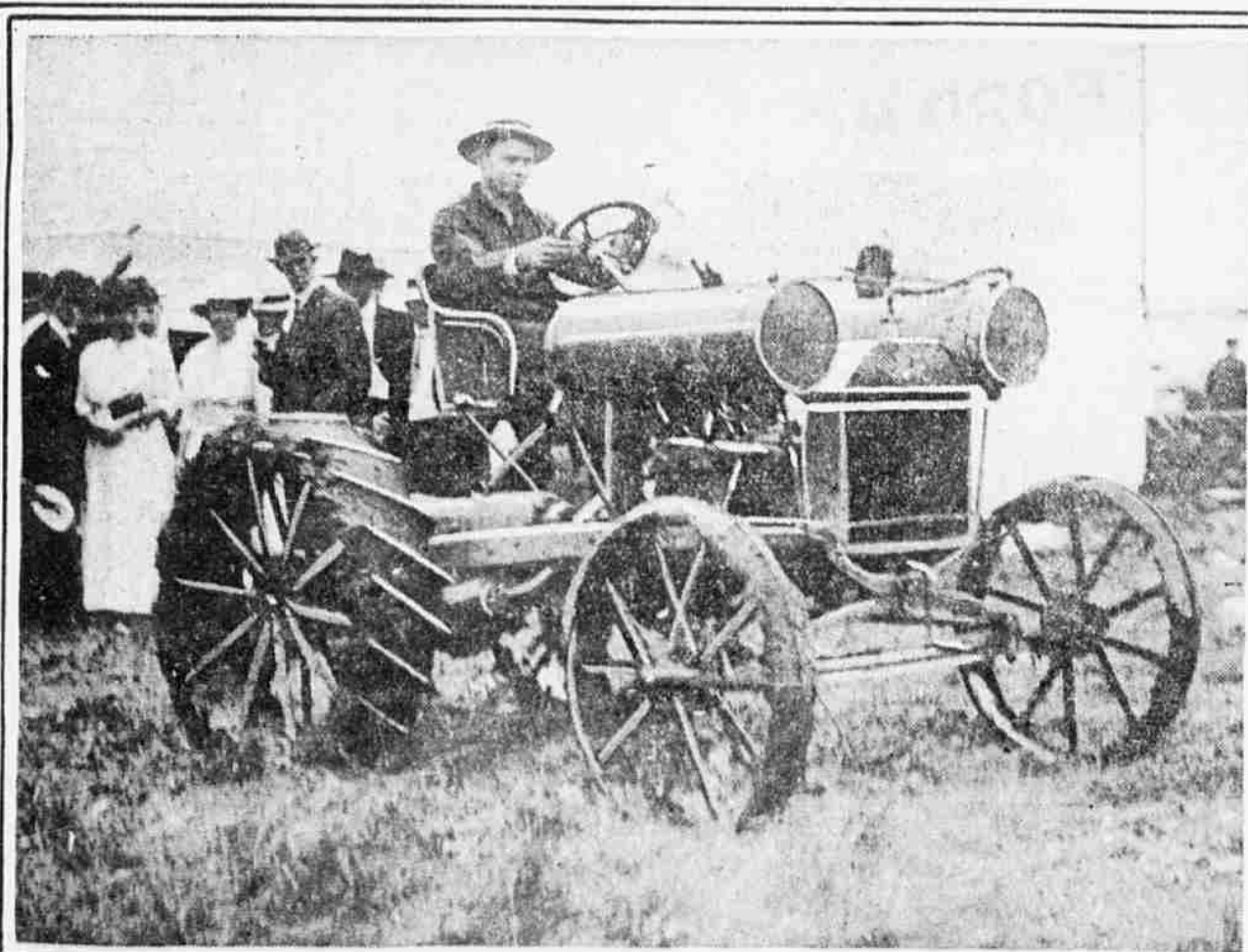
THE WORLD'S KALEIDOSCOPE OF EVER-CHANGING EVENTS AS RECORDED BY THE CAMERA MAN



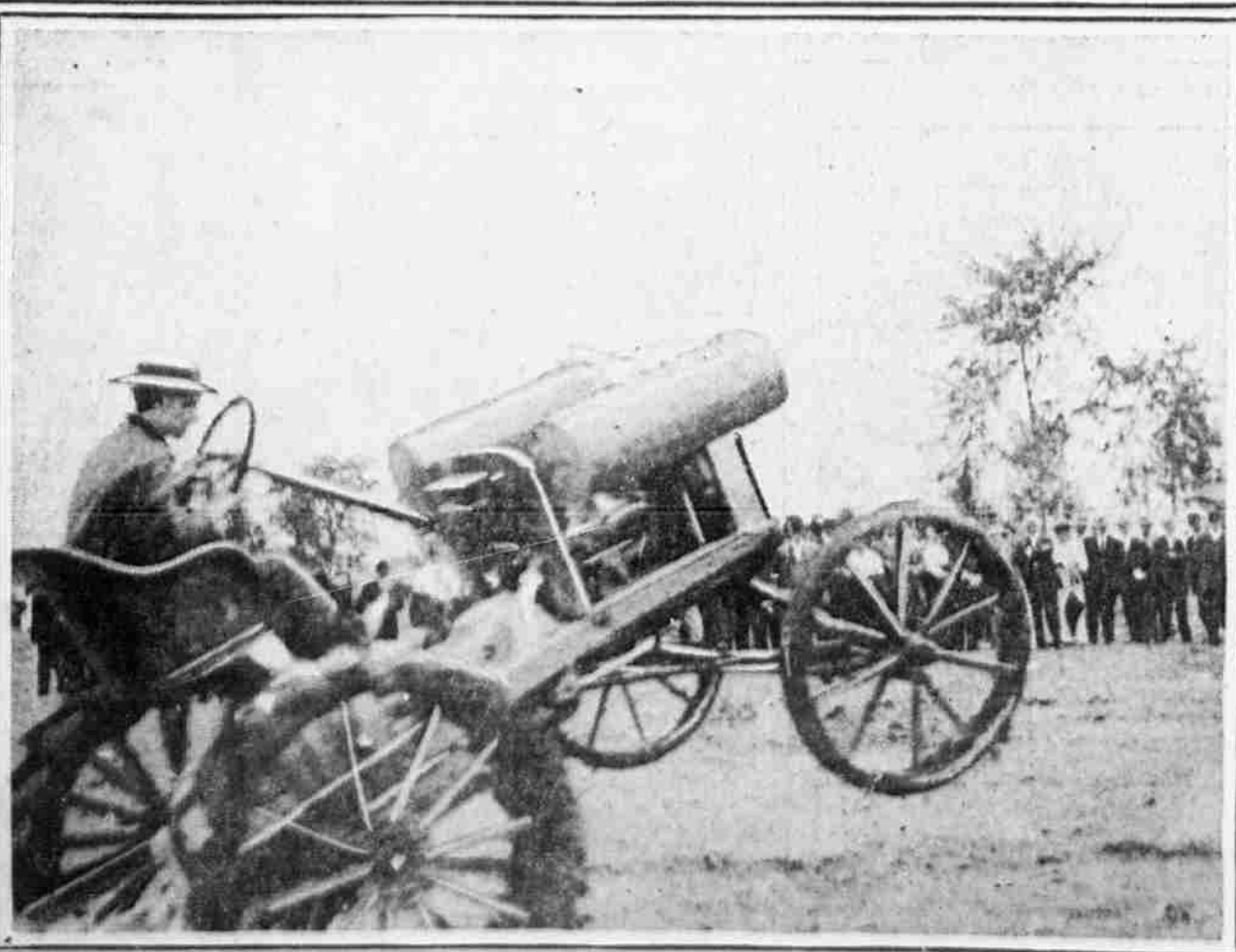
GERMANS RELEASING CLOUDS OF GAS IN PREPARATION FOR ATTACK ON RUSSIANS
This unusual picture, taken from above by a Russian airman, reveals the beginning of a grand chlorine gas assault on the Slav lines. Long columns of the poisonous vapor are rolling toward the enemy from the cylinders operated by the Germans in the center. Behind, lines of men are forming to follow up the attack. The brilliant sun causes each man to cast a long shadow.



SHE FRAMES RULES FOR HAPPY MARRIAGES
Mrs. Justus Sheffield, author, has been amusing a New York law court in her husband's suit for divorce. To wives she says: "Thou shalt not ask him any questions." To husbands: "Thou shalt be a careful kisser."



"SNOW BIRDS" GAMBOLE ON BEACH DESPITE WINTER'S FIERCEST GALE
True to their annual custom, New York's midwinter bathers of the fair sex, with their brother organization, the "Polar Bears," had their outing at Brighton Beach on Sunday. Here are two members tossing the medicine ball.



HENRY FORD'S NEWEST PRODUCTOR—THE JITNEY FARM TRACTOR
This is the car which the motor king offered to let the warring nations manufacture without royalty if they would stop fighting. The car can plow, pull roots, draw a load, harrow a field, and turn on its "hind legs" in a narrow space, as the lower picture shows. It is said Ford hopes to sell it for \$200.



POLISH RELIEF COMMITTEE MEETS TO FRAME NEW PLANS FOR AIDING WAR VICTIMS
A meeting of prominent women was held at the headquarters, 1428 Walnut street, yesterday to consider further means of helping Poland's afflicted. Left to right are Mrs. George Fritz Chandler, Mrs. Morris L. Parrish, Mrs. Robert von Moschizker, Mrs. Betty Campbell Madeira, Mrs. George Q. Horwitz, Mrs. B. Franklin Haddock.