



ILLUSTRATED
Evening Ledger

SATURDAY
 December 18, 1915

GUESTS AND SCENES CONNECTED WITH TODAY'S LEADING MATRIMONIAL EVENT IN THE CAPITAL

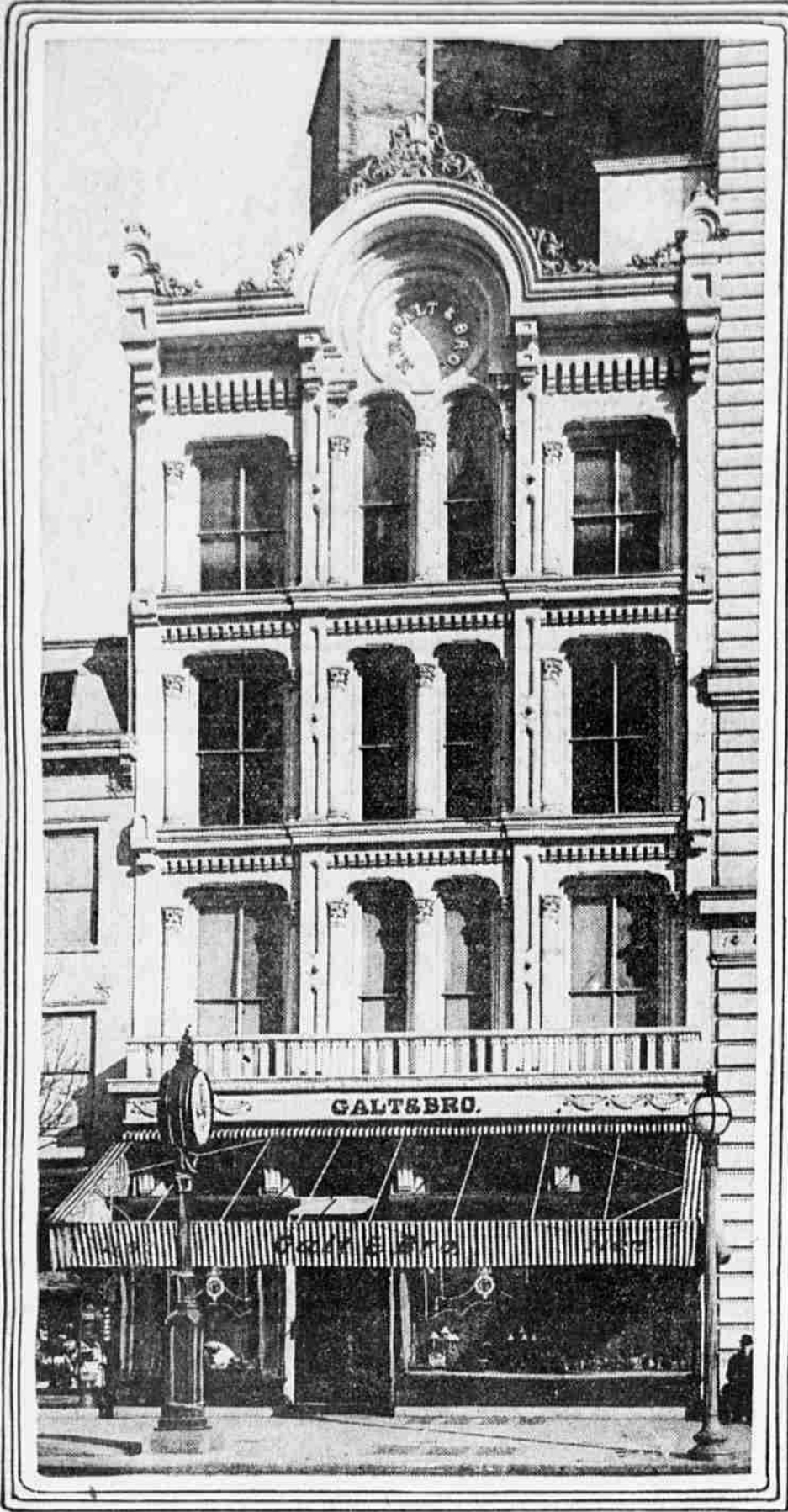


Photo by Buck.
THE GALT JEWELRY STORE AT THE CAPITAL.
 It is said this establishment, at 1107 Pennsylvania avenue, will continue under Mrs. Galt's ownership after she becomes Mrs. Wilson.



MISS BERTHA BOLLING
 Sister of Mrs. Galt, who will attend the bride at the altar.

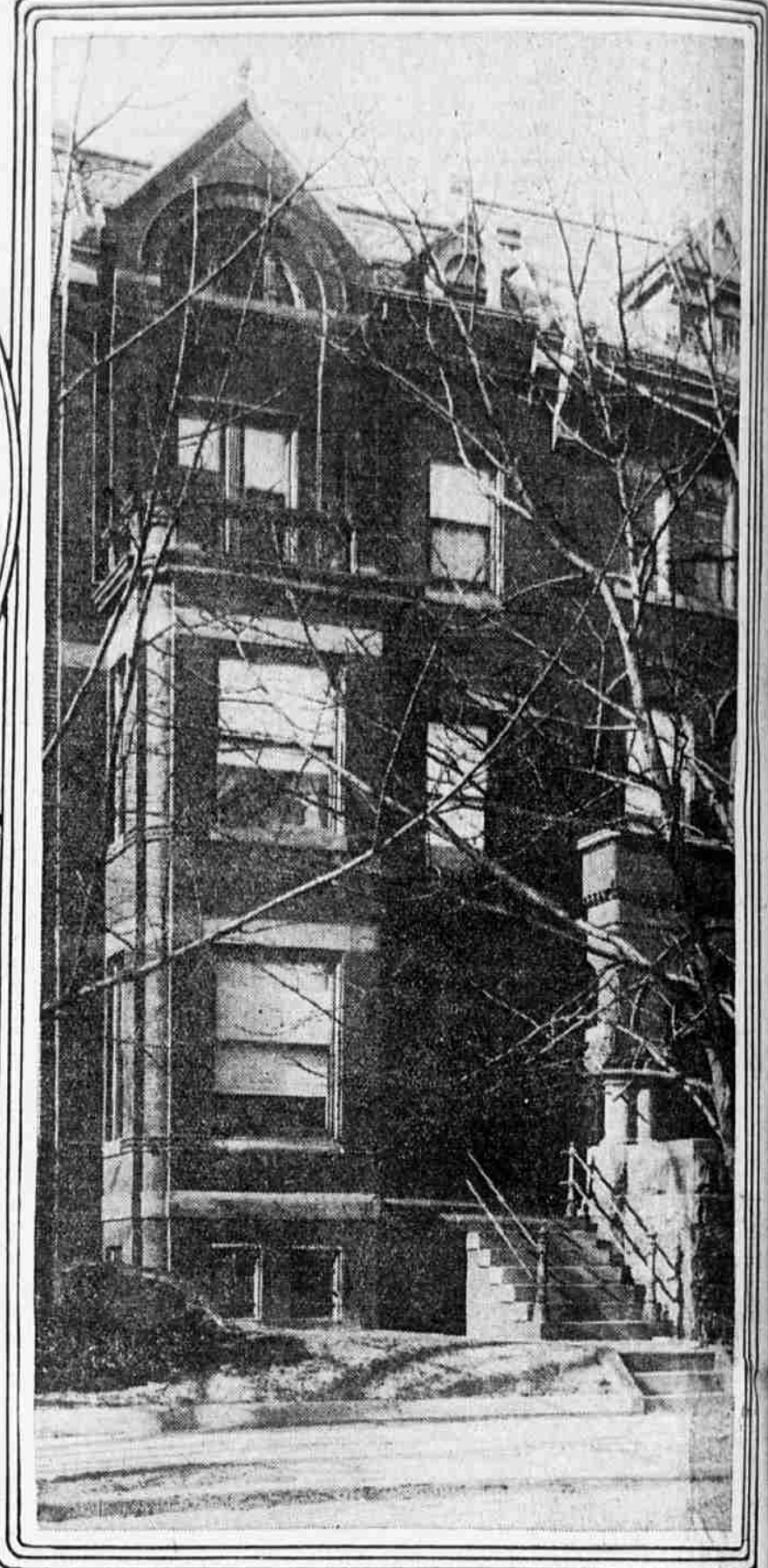


Photo by Underwood & Underwood.
WHERE THE CEREMONY WILL BE PERFORMED
 Home of Mrs. Galt, at 1308 20th street, Washington, D. C.

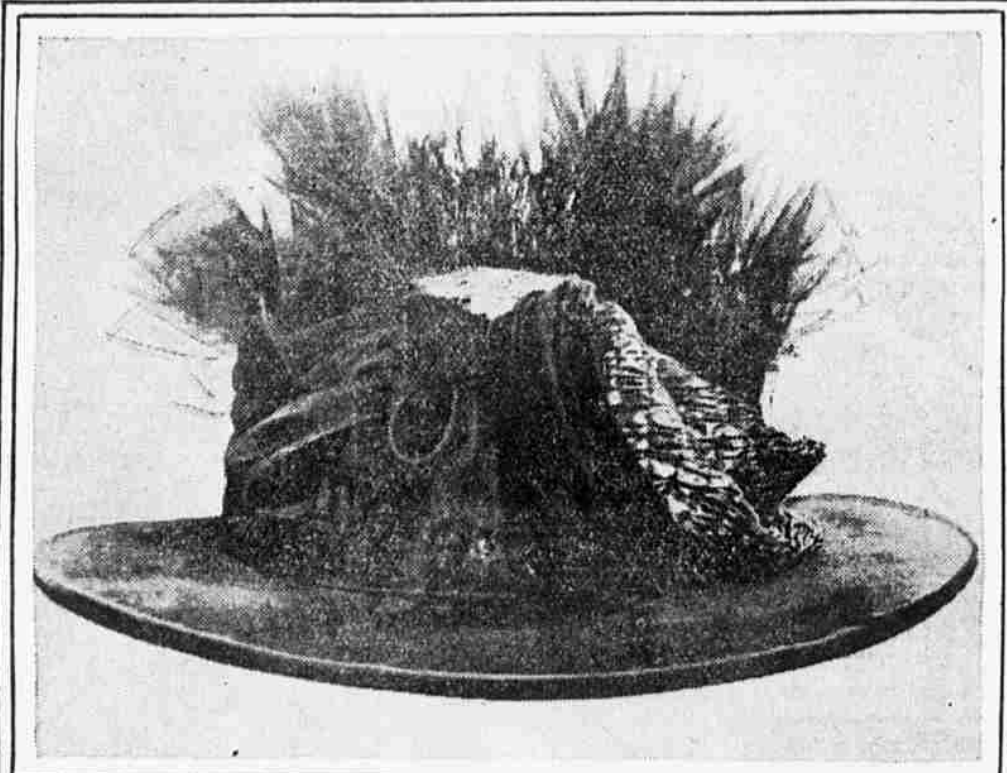


Photo by International Film Service.
TRAVELING HAT MADE FOR MRS. GALT
 A black sailor covered with green velvet. The crown has a top of lace wire covered with two thicknesses of black maline.



Photo by Harris & Ewing.
MISS HELEN WOODROW BONES
 The President's cousin and an oft-mentioned member of the White House family.



Photo by Harris & Ewing.
JOSEPH WILSON
 Brother of the President and possessor of some of the typical Wilson features.



Photo by International Film Service.
MRS. W. H. BOLLING
 Mother of the White House bride-to-be.



Photo by International Film Service.
FORMER MISS ANNA BOLLING
 Now Mrs. Maury, of Alabama. She will be among the guests at the wedding.