



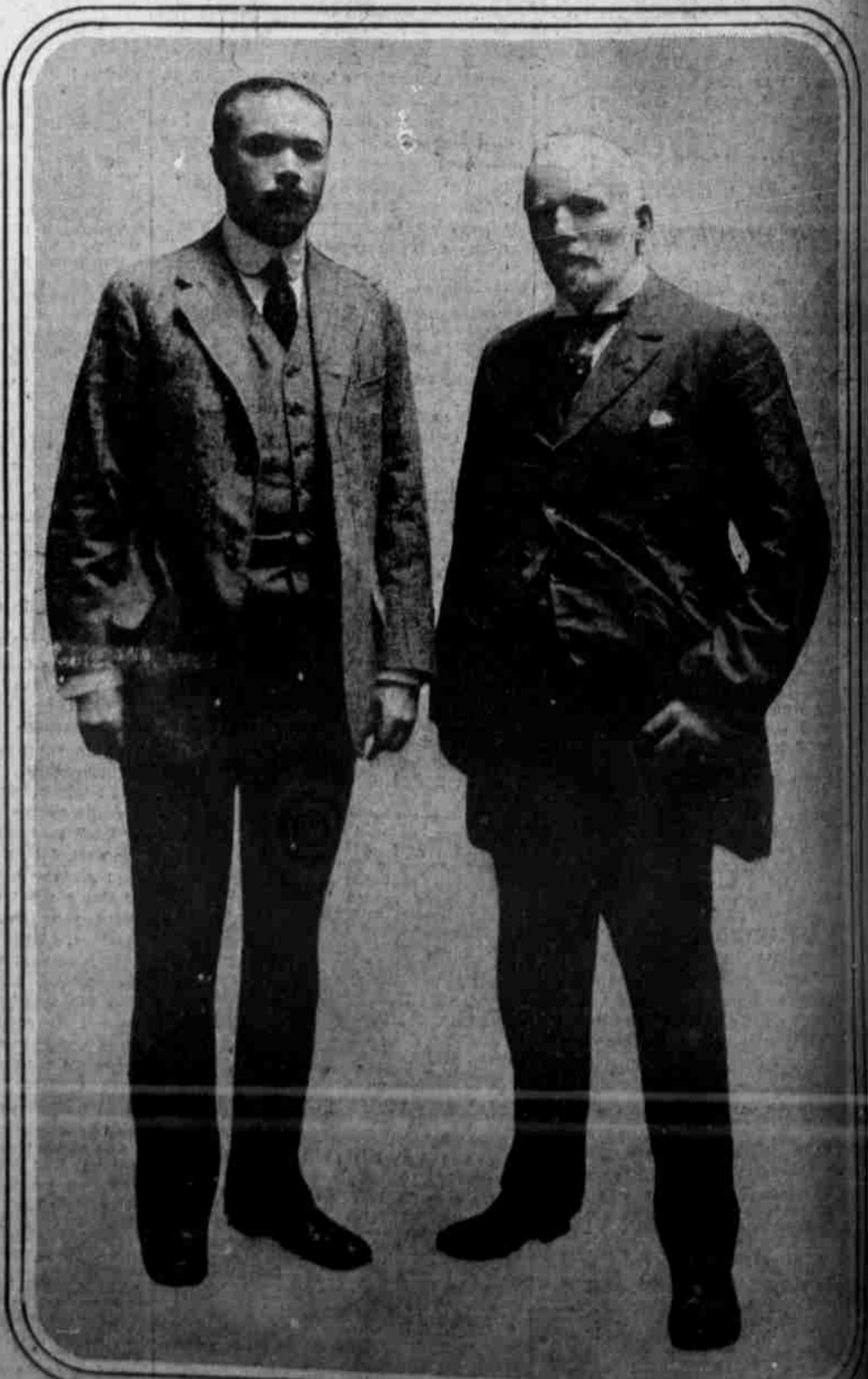
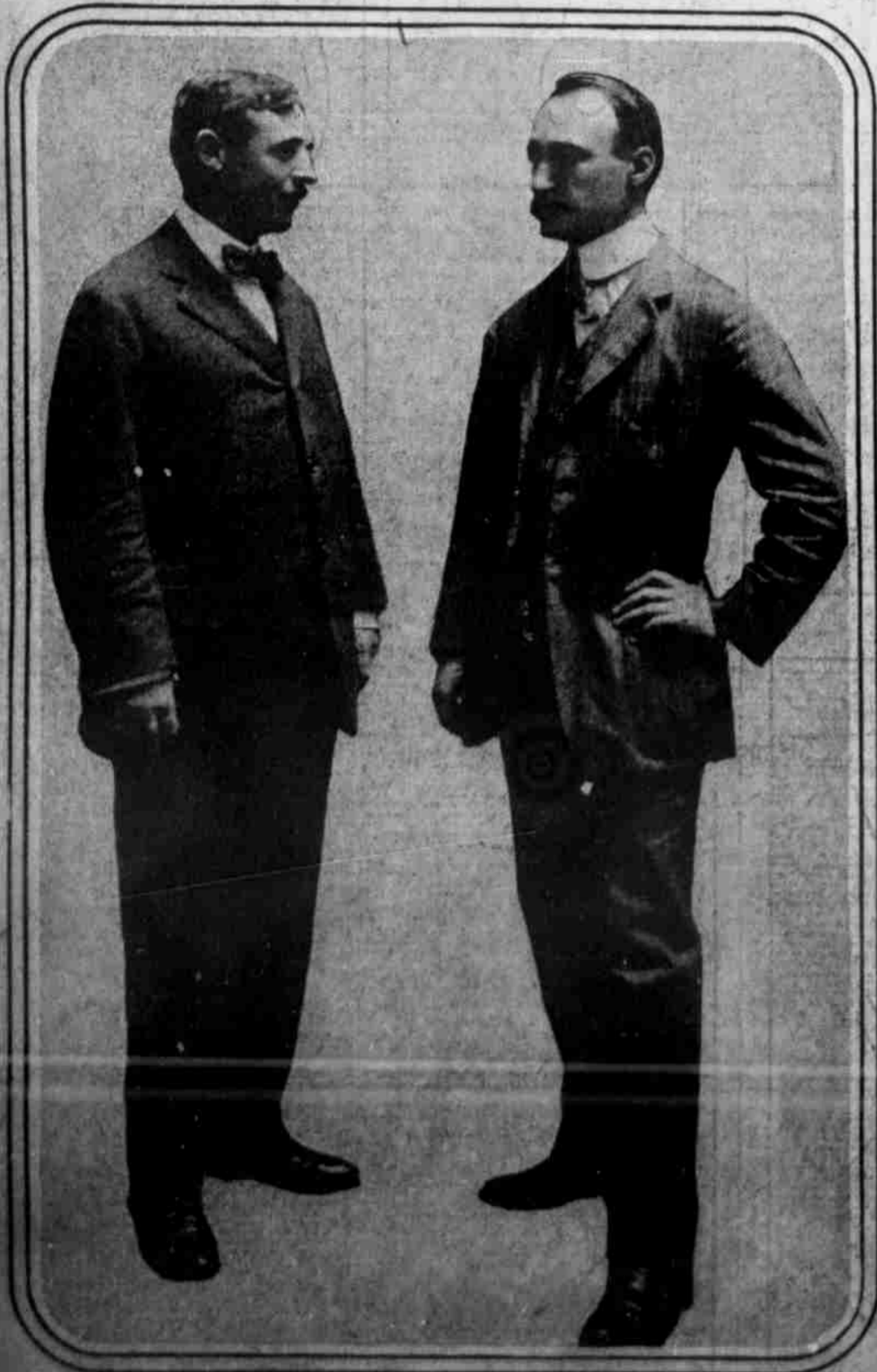
MRS. WHITNEY'S FASHION SHOW AND THE CHILDREN'S HOSPITAL CLAIM ATTENTION OF ALL WOMEN



A DAINTY NEGLIGEE
 Miss Robinson also wore this pink crepe de chine negligee. The band at the arms, shoulders and neck is outlined with seed pearls. The cap is by Judith Barbier.

AFTERNOON GOWNS ARE ATTRACTIVE
 This Jenny afternoon gown, worn by Miss Pauline Merriam, is a smart bit of apparel that won admiration yesterday. It is of emerald-green chiffon embroidered in silver and mounted over a green metal cloth. New puffed sleeves hang from the drop shoulder, and the waist is girdled by silver-brocaded ribbon.

A PAQUIN BALL GOWN
 Miss Dorothy Richardson is seen wearing a creation of blue and flesh tulle over pink taffeta, which excited much envy at the Fashion Show. A shoulder cape of silver lace falls away below the waist line in the back and is finished in Berthe effect in front.



FINANCIAL SPONSORS FOR CHILDREN'S HOSPITAL CAMPAIGN
 Treasurer William White, of the Hospital Board, on the left, and Secretary John Cadwalader, Jr., on the right, are responsible for the safekeeping of the contributions donated toward the \$500,000 fund for the Children's Hospital.

A NOVEL CREPE ROBE DE NUIT
 Miss Barbara Russell wore this nightdress at the fashion display in the Garrick Theatre. The sleeves are of creme point d'esprit, fastened by means of a rhinestone chain. Note the corset of fine French lace in black, with ribbons of flesh-colored taffeta.

EXECUTIVES IN CHILDREN'S HOSPITAL CAMPAIGN
 The task of collecting half a million dollars for the Children's Hospital is entrusted to Edward S. Sayres, president of the Hospital Board, on the right, and Vice Chairman Benjamin Rush on the left.