

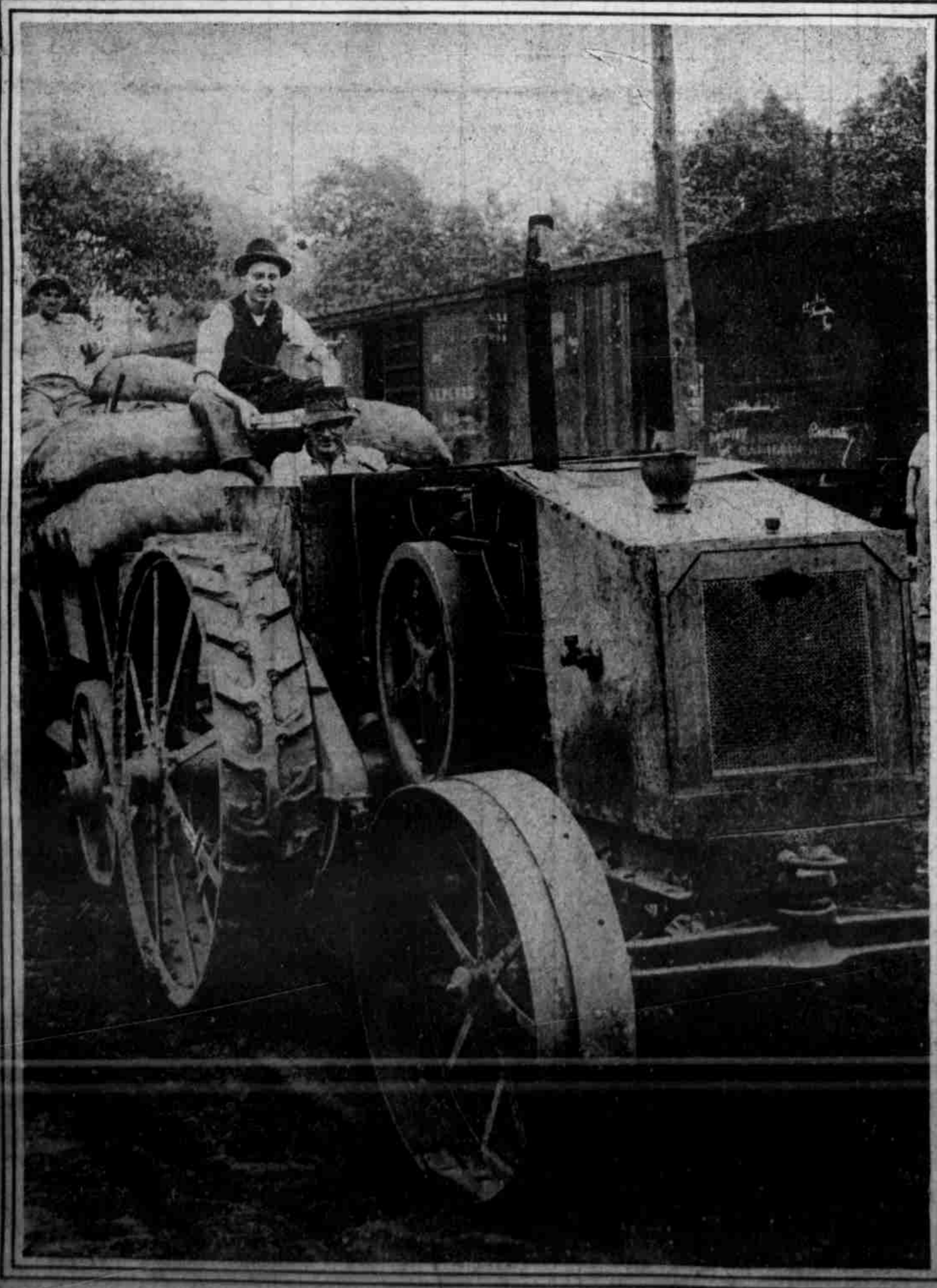
PERSONS, SCENES AND EVENTS THAT FIGURE IN THE NEWS OF THE DAY FROM DIVERS SOURCES



**IN THE COSTUMES OF YESTERYEAR**  
Miss Edythe Brown as "1857" and Miss Ethel Wilson as "1890" in the fashion show held by the Holy Trinity Bible Class on the Bidde place at Lansdowne.

**MAKING FULL USE OF THE LAST WARM DAYS OF THE SEASON**  
It's a long way to a public bathhouse from 21st and Tasker streets, so the kids of the neighborhood have recourse to the fountain there, with pleasing results, as shown.

**COMPARISON OF TWO ANCIENT VINTAGES**  
Misses Peggy Montague and Estelle Wilde were interesting figures at the Lansdowne fashion show. The former wore the attire of 1776, the latter of 1890.



**POTATOES WERE NEVER SO SOUND AND PLENTIFUL**  
This truck is hauling three wagons containing 50 sacks each. It makes five round trips daily between Dutch Neck and Princeton Junction—a big improvement since the days of "one-hoss" wagons and bad roads.



**JERSEY FARMERS BUSY GATHERING BOUNTIFUL HARVEST OF GARDEN TRUCK**  
Here are some of the tomatoes garnered from the fertile fields near Glassboro. They are on their way to the canning factories stretching all the way from Glassboro to Baltimore.



**THE WATERMELON SEASON IS JUST REACHING ITS FULL HEIGHT IN JERSEY**  
This big "patch" is near Bridgeton. It provides luscious melons for those persons who think—and they are not wrong—that watermelon tastes even better in the fall than in summer.