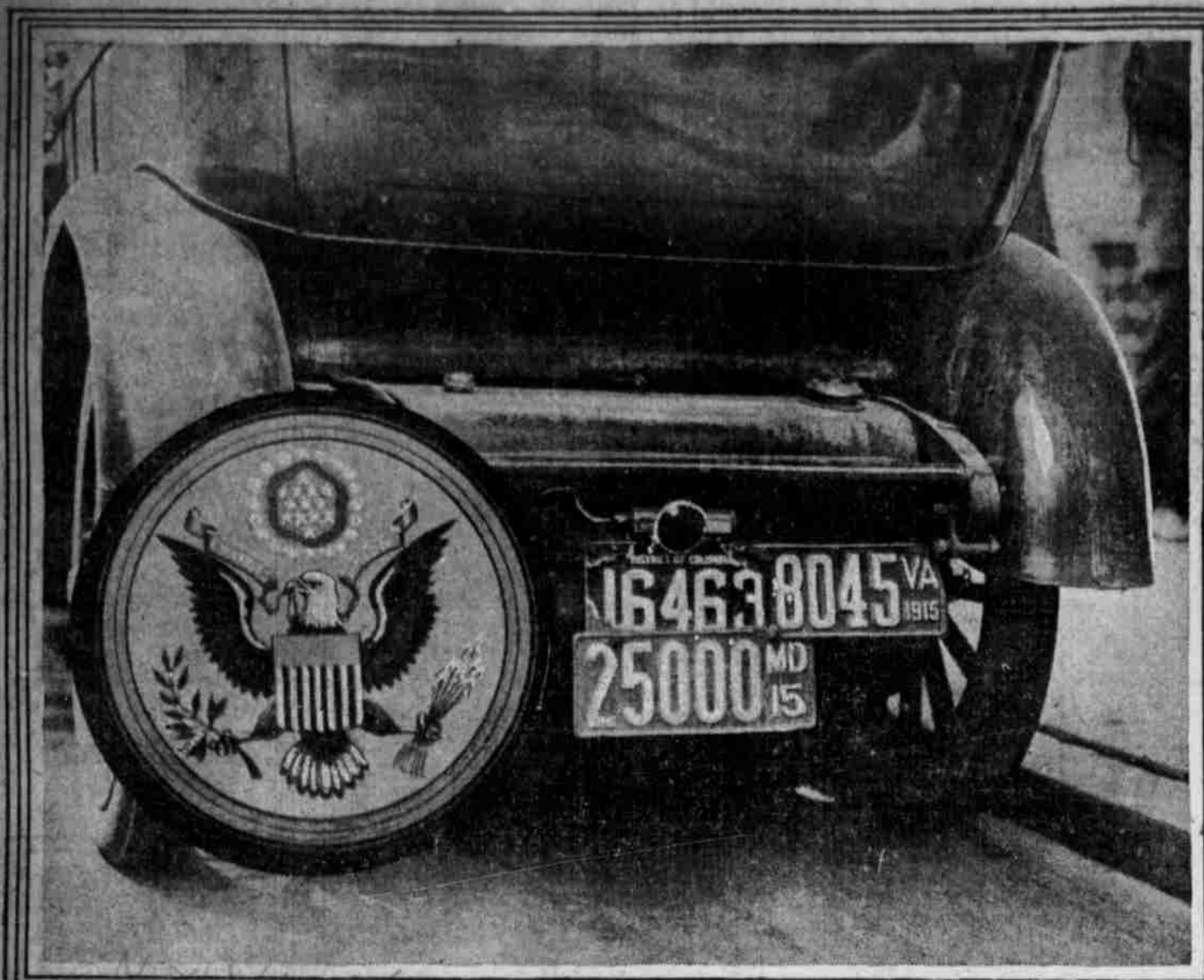




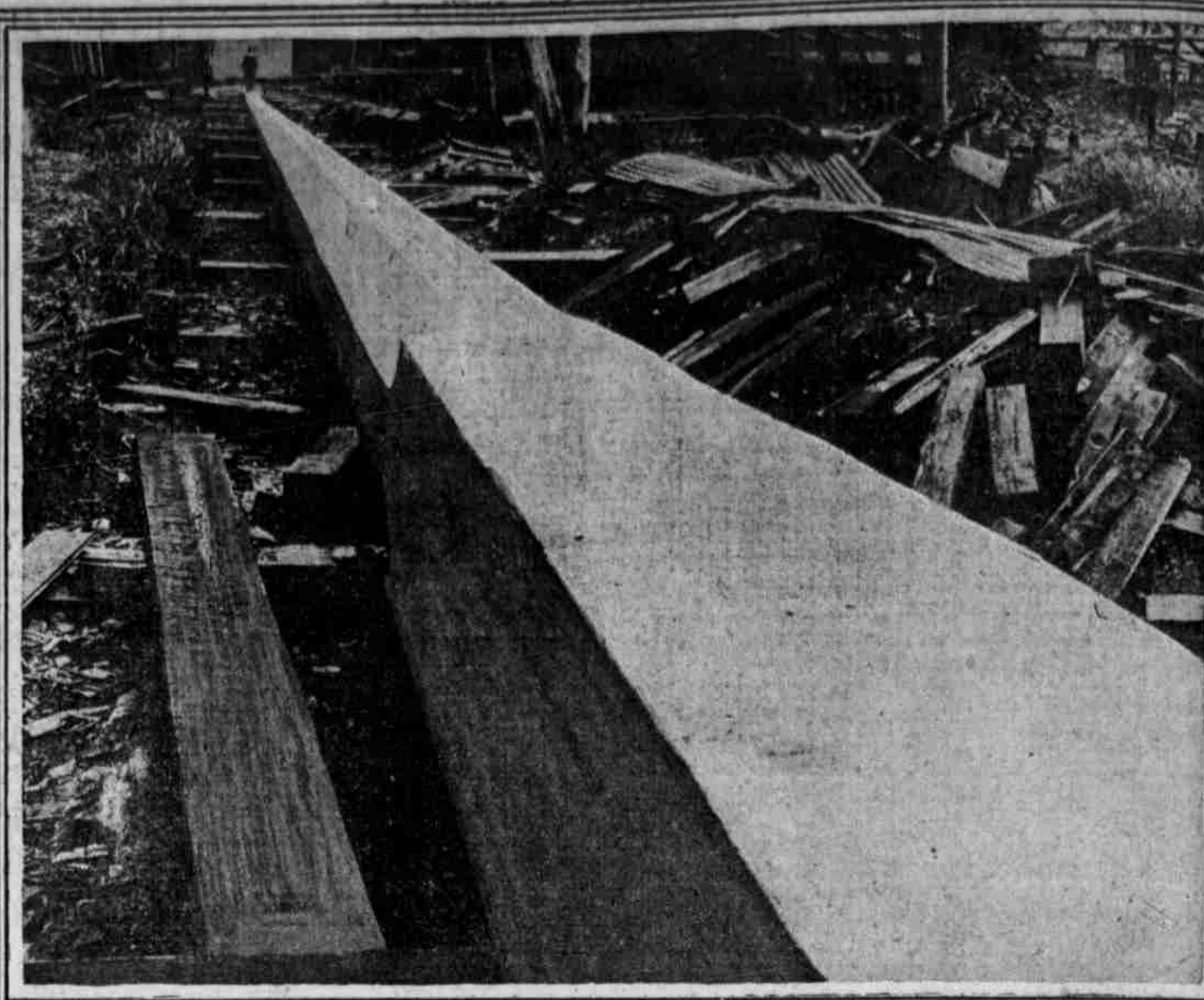
Evening Illustrated Ledger

MONDAY
September 6, 1915

ODD THINGS AND UNUSUAL SIGHTS FOUND BY THE PHOTOGRAPHER BOTH AT HOME AND ABROAD



LICENSE TAGS AND COAT OF ARMS ON PRESIDENT'S MOTORCAR
The picture shows the cluster of tags that the White House automobile carries in order to be able to travel without interruption through the District of Columbia, Virginia and Maryland. The United States seal appears on the doors of the car.



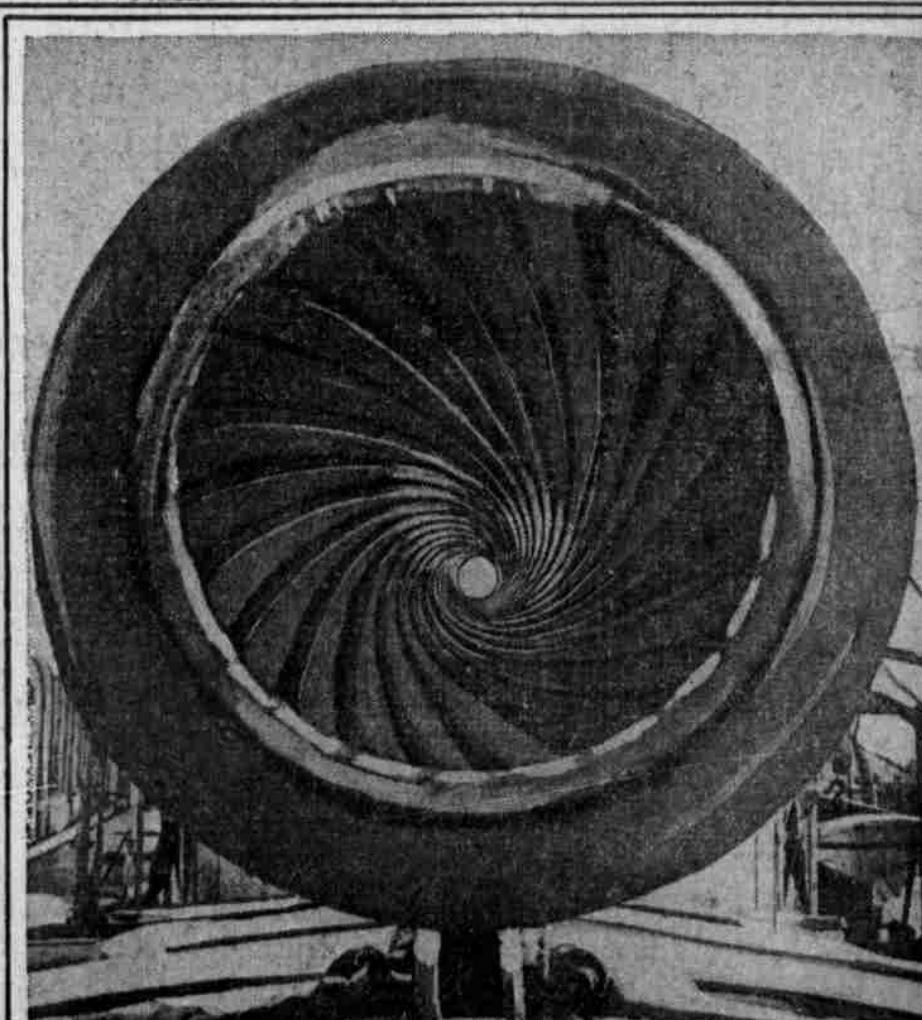
WORLD'S BIGGEST FLAGPOLE REQUIRES 7 CARS TO CARRY IT
The fir from which this was cut was 228 feet long, but was reduced to 216 feet. It came from the forests of Vancouver, British Columbia, and is intended for the Kew Botanical Gardens, at London. It measures about five feet in diameter at its base.



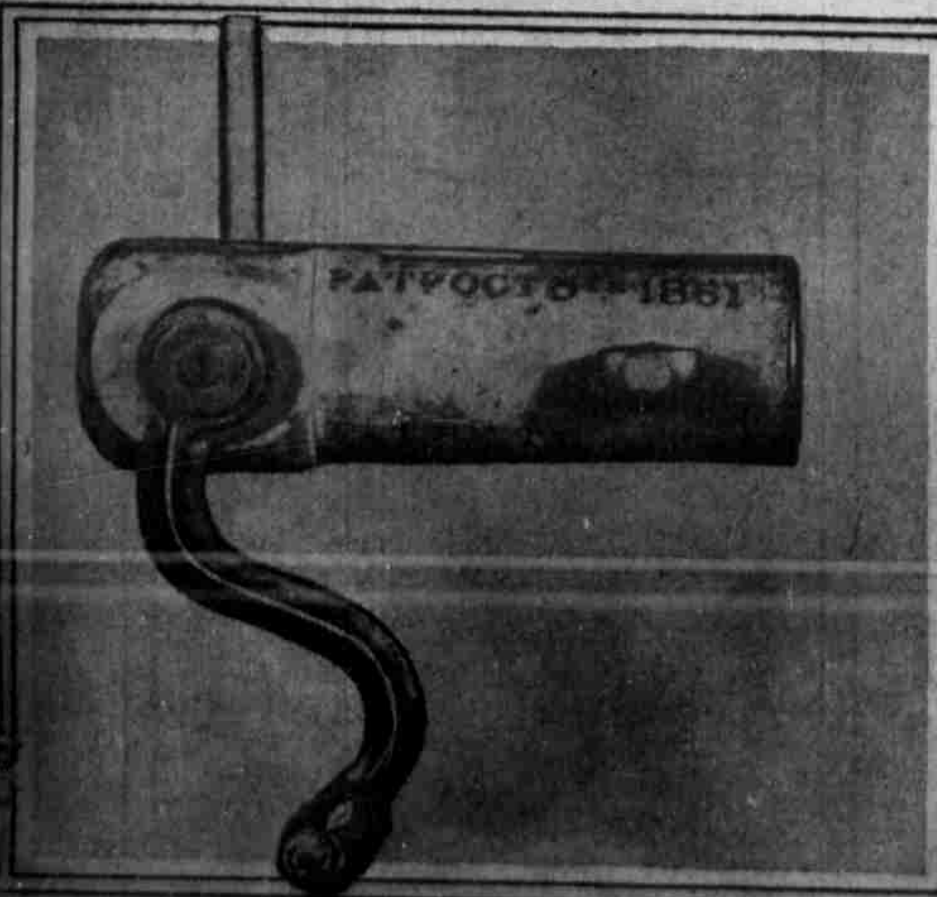
A YOUNG GREEK PATRIOT FROM CAMDEN
This young man is the son of a Greek business man on the Jersey side. He is wearing the national costume in view of the fact that Greece is about to enter the war.



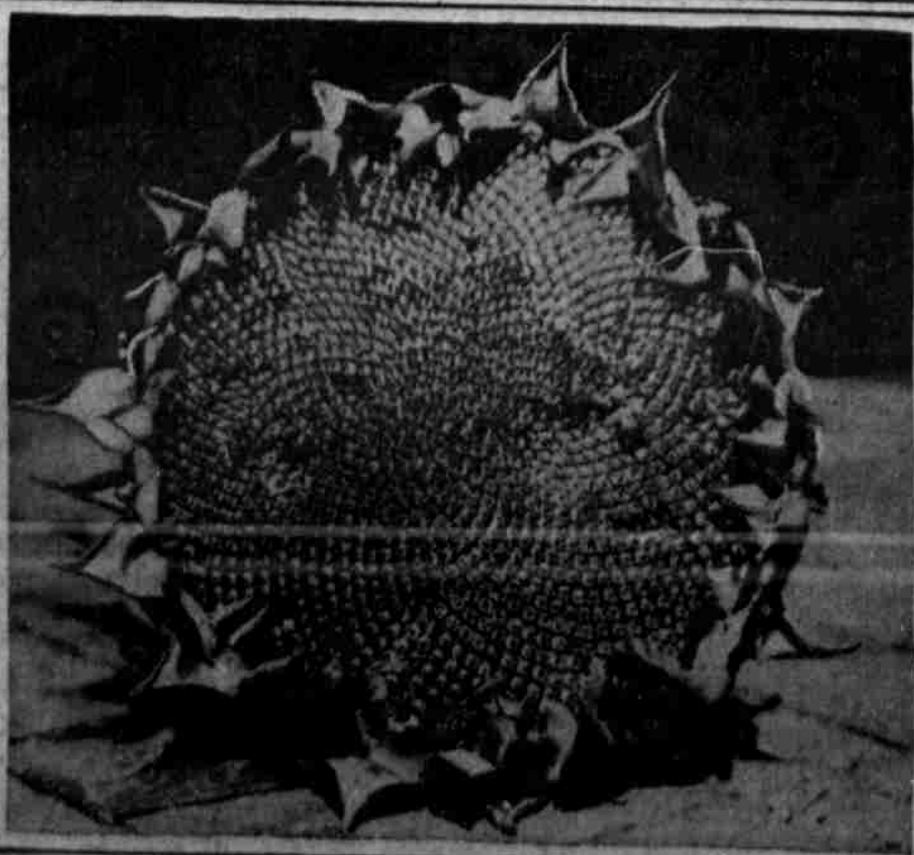
HE'S KISSING THE BLARNEY STONE, HENCE THE ATTITUDE
This Irish soldier went to imprint one more salute on the famous stone before departing with his regiment for the front. Friends are assisting by holding his legs.



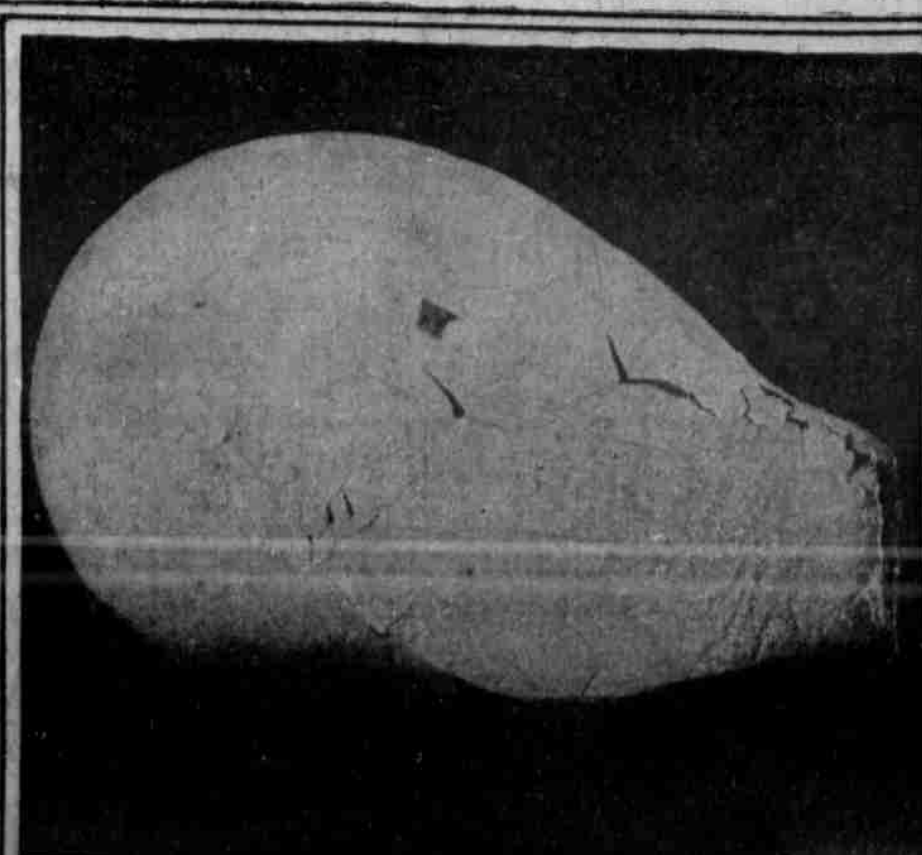
DOWN THE MUZZLE OF A BRITISH NAVAL GUN ON THE "LION"
These spiral grooves grip the copper band on a shell and force it to rotate, imparting to it steadiness and trueness of flight. Gunners call the raised ribs "lands."



THIS CURIOUS INSTRUMENT IS A CLOTHES-WRINGER
Will Bennett, of Willow Grove, bought it at an auction for two cents. For a long time no one could name it until an old inhabitant recognized it as belonging to the Civil War era.



BIG SUNFLOWER GROWN IN CITY LIMITS
Raised in a yard on Pittwater street, it measures 14 inches across. An idea of its size may be had by comparison with the brick in the lower left-hand corner.



NOT A BALLOON, BUT AN EGG
It was laid by one of the expert hens on Fern Rock Farm. It was not only imperfect in shape, but fragile in structure, breaking as soon as touched.