

HAVE
YOU
REGISTERED?

ILLUSTRATED Evening Ledger

THURSDAY
September 2, 1915

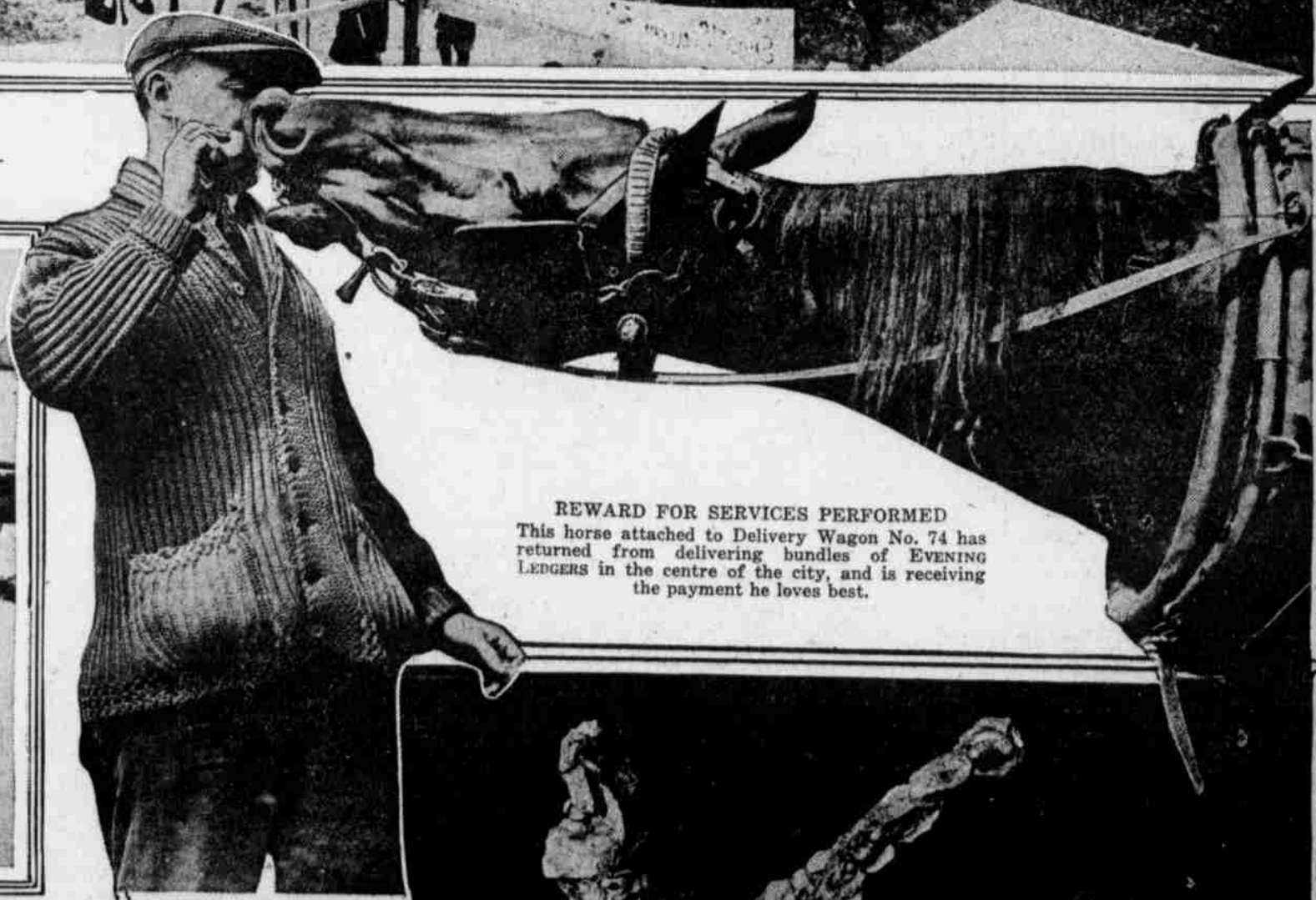
SEPTEMBER BRINGS THE OYSTER AGAIN; LIKEWISE COUNTY FAIRS AND LUSCIOUS, JUICY APPLES



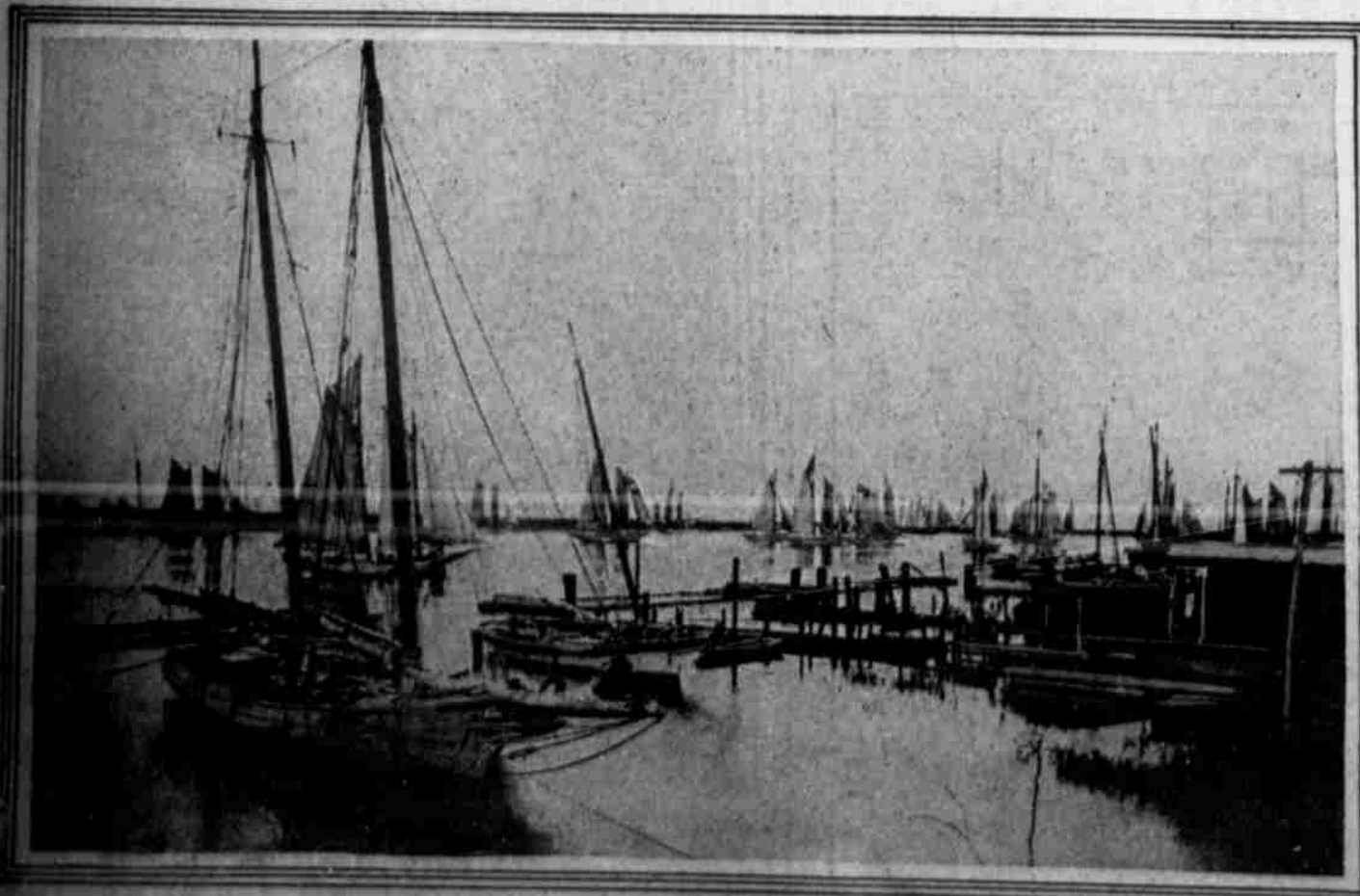
PANORAMA VIEW OF SECTION OF BYBERRY FAIR
Philadelphia's Annual County Fair opened yesterday. Part of the racetrack, with horses in sulkys exercising; the "Midway" and booths are seen.



OYSTER SEASON IS ON ONCE MORE AT BIVALVE, N. J.
The oysters in the foreground have been laid by for two tides, to fatten for the market at Maurice River.



REWARD FOR SERVICES PERFORMED
This horse attached to Delivery Wagon No. 74 has returned from delivering bundles of EVENING LEDGERS in the centre of the city, and is receiving the payment he loves best.



LEET OF OYSTER BOATS GOING TO BEDS
More than 600 sailboats leave Bivalve for the oyster beds, a short distance from the town.



FANTASTIC SHAPE TAKEN BY CLUSTER OF OYSTERS
These molluscs fasten themselves to any object that presents itself. The cluster in the picture is attached to a twig.