

TEMPEST AREA LIKE EGG WITH TWO YOLKS, MR. BLISS EXPLAINS

Storm Gathered Head in South Carolina, Swung Up Coast and Reached Reading, Hitting Philadelphia on Flank.

"The heaviest storm of the summer," said George E. Bliss, Philadelphia weather forecaster, today, "was due to the migration of a great egg-shaped storm area with two points of low pressure at the extremities, resembling a double yolk."

PHILADELPHIA LOSES HEAVILY IN BIG STORM

Chestnut Hill line was blocked for one hour because of a break in the wire but the rest of the city was not affected.

SEWER RELOCATION HELD UP

Work on the new sewer being constructed in connection with the subway tunnel was temporarily checked at 6th and Walnut streets when the excavation was flooded by the heavy rains.

STREET CAVES IN

At 6th and Wood streets a serious cave-in occurred. Excavations had been made there in the relocating of the sewers in connection with the new subway system.

LEAGUE ISLAND DAMAGED

League Island lost many of its finest trees. Some of the newly planted saplings at the Navy Yard were torn up by the force of the gale, and swept into the river.

CROPS DAMAGED TWENTY PER CENT IN BERKS COUNTY

State Road Near Kutztown Will Have to Be Rebuilt.

CAPTAIN AND SAILOR LOST IN SANDY HOOK SHIPWRECK

Lifeline Smashed to Pieces When They Attempt Launching.

CONSHOHOCKEN HOUSES UNROOFED

NORRISTOWN, Pa., Aug. 4.—Roots of five houses on Spring Mill avenue, Conshohocken, were torn off by the gale this morning.

DELAVARE SHIPPING ESCAPES

So far as is known no serious damage was done to ships on the Delaware River by the storm. Boats going up and down the river were not seriously affected.

PHONE OUT OF SERVICE

The Bell Telephone Company was a heavy loser through the storm. In Philadelphia only 125 out of 15,000 telephones were out of service.

MEDIA CROPS RUINED

The storm in Media was the worst seen there in 12 years. Crops were badly damaged, telephone and telegraph wires were blown down.

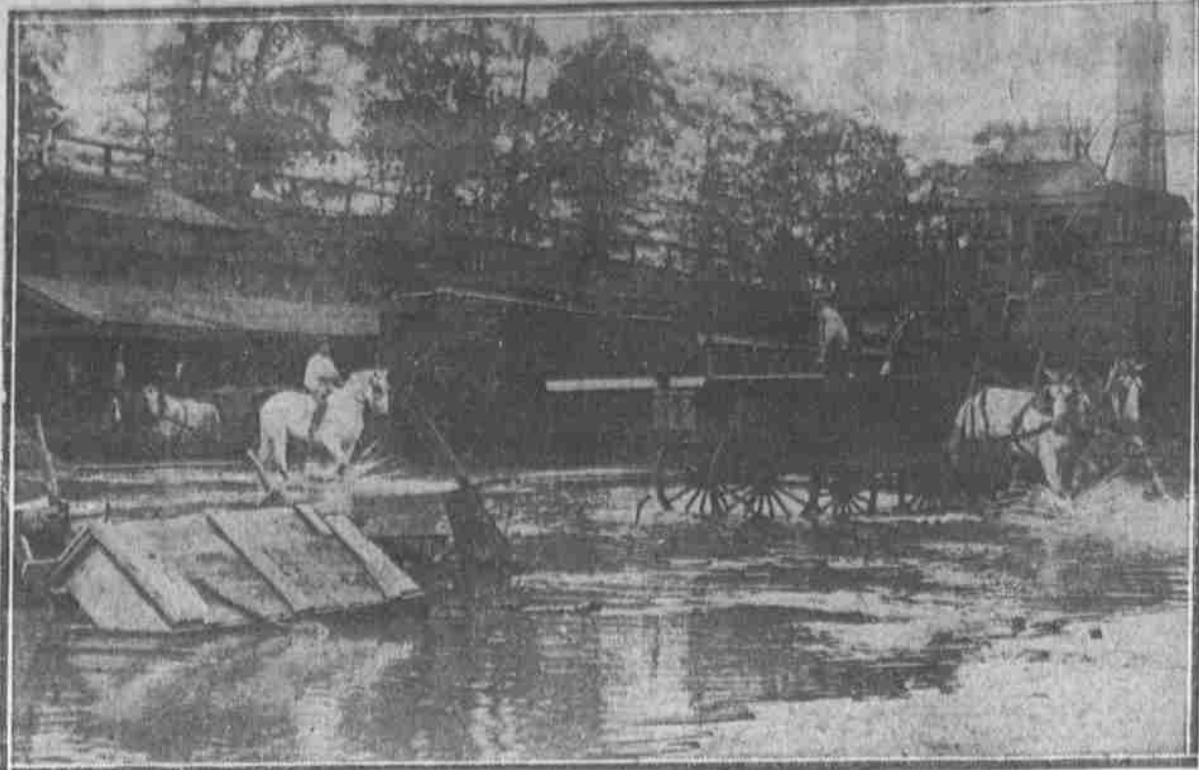
CHESTER AND DELAWARE COUNTIES HIT BY TEMPEST

Number of Boats Sunk and Damaged by Storm.

FRUIT TREES AT NORRISTOWN STRIPPED OF THEIR BEARING

Tents Erected by Carnival Company Are Blown Down.

FLOOD KNEE-DEEP AT 63d AND MARKET STREETS



The picture shows the yards of the Derr Lumber Company, where operations were seriously interfered with by a small sea of surging water.

ATLANTIC CITY EXPERIENCES 40-MILE GALE ON BOARDWALK

Shore Guests Never Will Forget Rage of Storm Northeast.

ATLANTIC CITY, Aug. 4.—Thousands of visitors from inland cities who had never experienced the violence of a full-grown northeast on the Atlantic shore probably never will forget last night.

GREAT HAVOC IS PLAYED ON FARMS NEAR HARRISBURG

Acres of Corn Leveled and Fruit Blown From Trees.

HARRISBURG, Aug. 4.—Thousands of dollars' worth of damage to farms was done by a heavy rain and wind storm which swept Harrisburg and surrounding country last night and early today.

CHESTER AND DELAWARE COUNTIES HIT BY TEMPEST

Number of Boats Sunk and Damaged by Storm.

CHESTER, Pa., Aug. 4.—The storm early this morning caused thousands of dollars' worth of damage throughout Chester and Delaware counties.

FRUIT TREES AT NORRISTOWN STRIPPED OF THEIR BEARING

Tents Erected by Carnival Company Are Blown Down.

NORRISTOWN, Pa., Aug. 4.—A terrific rain and wind storm visited Norristown last night, and this morning the streets were strewn with branches of trees.

POWDER PLANT FLOODED AT CARNEY'S POINT

Wilmingtonians Marooned on Fenton's Beach When Pier Goes.

WILMINGTON, Del., Aug. 4.—The storm of last night did immense damage in this section. Reports from the lower part of the State show that corn was leveled and in many cases ruined.

CROPS DAMAGED TWENTY PER CENT IN BERKS COUNTY

State Road Near Kutztown Will Have to Be Rebuilt.

CAPTAIN AND SAILOR LOST IN SANDY HOOK SHIPWRECK

Lifeline Smashed to Pieces When They Attempt Launching.

CONSHOHOCKEN HOUSES UNROOFED

NORRISTOWN, Pa., Aug. 4.—Roots of five houses on Spring Mill avenue, Conshohocken, were torn off by the gale this morning.

DELAVARE SHIPPING ESCAPES

So far as is known no serious damage was done to ships on the Delaware River by the storm.

PHONE OUT OF SERVICE

The Bell Telephone Company was a heavy loser through the storm. In Philadelphia only 125 out of 15,000 telephones were out of service.

MEDIA CROPS RUINED

The storm in Media was the worst seen there in 12 years. Crops were badly damaged, telephone and telegraph wires were blown down.

CHESTER AND DELAWARE COUNTIES HIT BY TEMPEST

Number of Boats Sunk and Damaged by Storm.

FRUIT TREES AT NORRISTOWN STRIPPED OF THEIR BEARING

Tents Erected by Carnival Company Are Blown Down.

ATLANTIC CITY EXPERIENCES 40-MILE GALE ON BOARDWALK

Shore Guests Never Will Forget Rage of Storm Northeast.

ATLANTIC CITY, Aug. 4.—Thousands of visitors from inland cities who had never experienced the violence of a full-grown northeast on the Atlantic shore probably never will forget last night.

GREAT HAVOC IS PLAYED ON FARMS NEAR HARRISBURG

Acres of Corn Leveled and Fruit Blown From Trees.

HARRISBURG, Aug. 4.—Thousands of dollars' worth of damage to farms was done by a heavy rain and wind storm which swept Harrisburg and surrounding country last night and early today.

CHESTER AND DELAWARE COUNTIES HIT BY TEMPEST

Number of Boats Sunk and Damaged by Storm.

FRUIT TREES AT NORRISTOWN STRIPPED OF THEIR BEARING

Tents Erected by Carnival Company Are Blown Down.

NORRISTOWN, Pa., Aug. 4.—A terrific rain and wind storm visited Norristown last night, and this morning the streets were strewn with branches of trees.

POWDER PLANT FLOODED AT CARNEY'S POINT

Wilmingtonians Marooned on Fenton's Beach When Pier Goes.

WILMINGTON, Del., Aug. 4.—The storm of last night did immense damage in this section. Reports from the lower part of the State show that corn was leveled and in many cases ruined.

CROPS DAMAGED TWENTY PER CENT IN BERKS COUNTY

State Road Near Kutztown Will Have to Be Rebuilt.

CAPTAIN AND SAILOR LOST IN SANDY HOOK SHIPWRECK

Lifeline Smashed to Pieces When They Attempt Launching.

CONSHOHOCKEN HOUSES UNROOFED

NORRISTOWN, Pa., Aug. 4.—Roots of five houses on Spring Mill avenue, Conshohocken, were torn off by the gale this morning.

DELAVARE SHIPPING ESCAPES

So far as is known no serious damage was done to ships on the Delaware River by the storm.

PHONE OUT OF SERVICE

The Bell Telephone Company was a heavy loser through the storm. In Philadelphia only 125 out of 15,000 telephones were out of service.

MEDIA CROPS RUINED

The storm in Media was the worst seen there in 12 years. Crops were badly damaged, telephone and telegraph wires were blown down.

CHESTER AND DELAWARE COUNTIES HIT BY TEMPEST

Number of Boats Sunk and Damaged by Storm.

FRUIT TREES AT NORRISTOWN STRIPPED OF THEIR BEARING

Tents Erected by Carnival Company Are Blown Down.

CONSHOHOCKEN HOUSES UNROOFED

NORRISTOWN, Pa., Aug. 4.—Roots of five houses on Spring Mill avenue, Conshohocken, were torn off by the gale this morning.

100 LIVES BELIEVED LOST IN ERIE FLOOD

Continued from Page One. Rescuers, firemen and policemen were all but futile, as the debris, floating on the 25-mile current, made even venturing into the edge of the water fatal.

The waters rose with incredible swiftness after last night's downpour, and a stream was soon racing down French street at the rate of 30 miles an hour.

Barrels, boxes, pieces of porch furniture and great trunks of the current, carrying everything before them. The water poured into cellars, tore away great sections from the banks of the creek and again its work of undermining the structures built close to its banks.

EFFECTIVE RESCUE WORK. Every fireman and every available policeman was doing duty in the stricken districts. Men, women and children were taken from endangered buildings by means of ropes, ladders and pieces of lumber hastily pressed into service.

The body of Mrs. John Higgins, with the body of her 13-month-old infant clasped in her arms, was found this morning by the rescuers. Previously the body of her husband was found on a lawn near Mill Creek.

Fireman John Schweitzer had his legs crushed while trying to turn heavy wreckage so that the flood would not rush higher than three feet in State street, the main business thoroughfare.

SIX BRIDGES ON THE LINE OF THE FLOOD were carried away and wreckage of brick buildings was piled 30 feet high in places.

DIES TRYING TO SAVE CHIEF. When the flood was raging at its height many heroic rescues were made by firemen, policemen and civilians. Three times Fire Chief McMahon was himself rescued, after having carried women or children to safety.

THE JARECKI IRON PLANT has been turned into a temporary morgue, as it is near the heart of the flooded district.

WHOLE FAMILIES are missing in the flood zone, which is being washed out by the force and business district.

THE EASTERN PORTION of the city was cut off nearly all night, but early today communication was established with that section.

SUMMER PARK DESTROYED. At the mouth of Four Mile Creek is the summer park of that name. All buildings there—theatre, refreshment hall and several amusement places—were swept over the high bluff into the lake.

ON EAST 10TH STREET, one and a half blocks from State street, debris was piled 20 feet high. It consisted of parts of broken frames, beams and other things.

RAILROADS TIED UP. The tracks of the New York Central Railway and the Nickel Plate Railway were washed away at Westleyville, three miles east of Erie.

STORM HITS DELAWARE CITY. DELAWARE CITY, Del., Aug. 4.—The heaviest storm in years struck this city early this morning. The wind reached hurricane proportions.

E. M. HOPKINS SPEAKS ON EMPLOYMENT WORK

"Bad Business to Hire and Discharge Employees in Large Numbers," He Tells Rotary Club.

E. M. Hopkins, employment manager of the Curtis Publishing Company, was the speaker at the weekly luncheon of the Rotary Club, at the St. James Hotel, today.

Mr. Hopkins spoke on "Present Employment Work as a Factor in Industrial Efficiency." He said that managers of big business concerns in Philadelphia have never seen the ocean looking from the ends of their work and were coming more and more to recognize the personal equation, that is, the hiring and discharging of men.

It is bad business to hire and discharge amovables in large numbers, he said. "Because it involves a loss of time and money and hampers the efficiency of the plants. The thing to do is to find the proper man for the proper place and promote him along the lines with which he is most familiar."

Mr. Hopkins said that next fall an association would be formed by the managers of large plants in this city for the study of employment problems. He predicted great changes in employment systems, declaring the practice of allowing foremen and subforemen to hire and discharge at will would be discontinued.

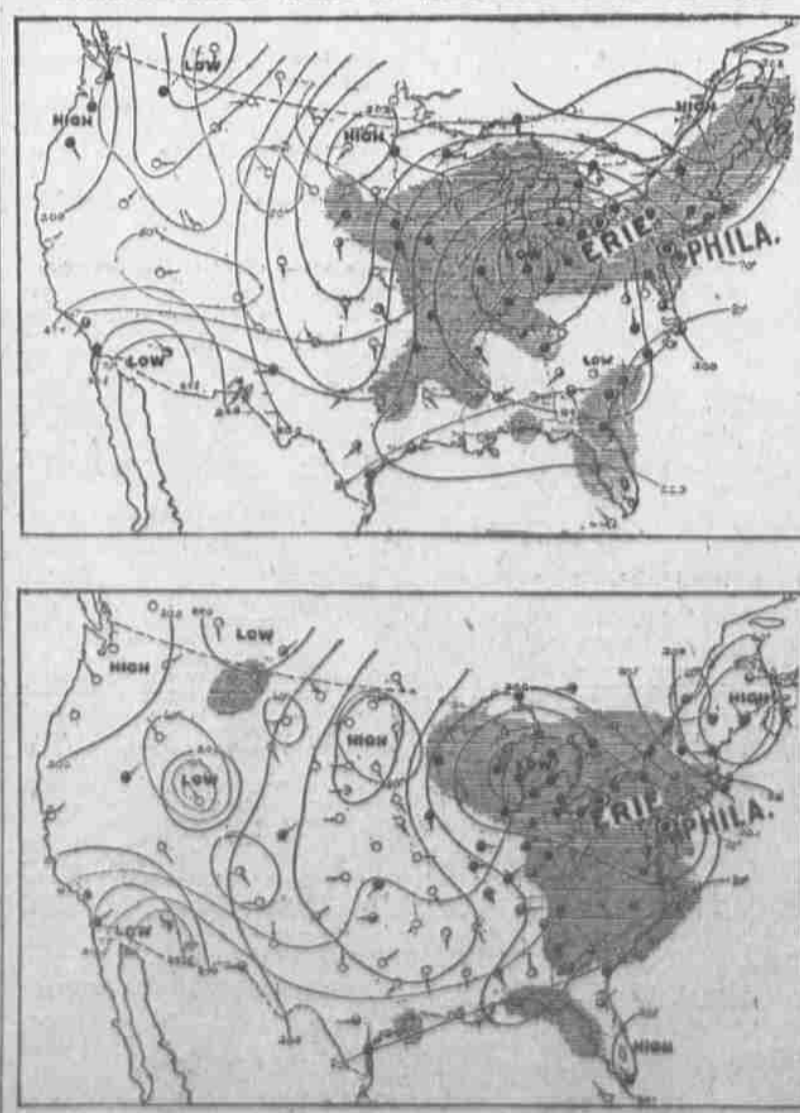
SHIPS CRASH IN STORM

Barge and Steamboat Collide Near Reedy Island.

The Norwegian steamship Tabor and the barge Totterville, crashed into each other during the storm early today below Reedy Island, in the Delaware Bay.

Delaware Orchards Suffer. DOVER, Del., Aug. 4.—The worst wind and rain storm of the season swept over this section of Kent County last night, leaving ruin in its wake. In the rural sections, trees were blown down, crops were ruined and cornfields flattened as though a steam roller had passed over them.

DIAGRAMS SHOW STORM PROGRESS



Weather Forecaster Bliss' reference to the double-yolk egg construction of the storm area can readily be understood from a glance at the two maps. The one above, the official map for yesterday, shows conditions when the storm started. The "egg" extends from Indiana with a "yolk" of low pressure there to South Carolina with another "yolk" there. The map below is the one for today and shows the conditions this morning. The egg shape of the storm area is still apparent, but the upper "yolk" of low pressure has moved north over Michigan, while the lower yolk of low pressure has swept up the coast and central over Reading.

PENNSY'S LOSS GREAT; READING LITTLE HURT

Erie and Jackson Washouts Isolate Pennsylvania Train. Many Wires Down.

The storm probably will cost the Pennsylvania Railroad thousands of dollars, but the Philadelphia and Reading lines escaped with little damage.

Fifty-five passengers are on the isolated train. The conductor reached Belle Mead at dawn today and made a report. Later a washout in the valley cut the remaining wires and since then officials of the road have not been able to get into communication with the train.

BRITISH NOT ABLE TO USE ARMY UNTIL NEXT YEAR. French fears that a depletion of his armament in a little while might later permit the Germans to get through the British lines to Calais.

ONLY 600,000 IN FIELD. The United Press learns that no more than 600,000 British troops are at the front in western Europe, on the Gallipoli Peninsula and in Egypt.

TRAFFIC CANNOT BE RESUMED ON THE NICKEL PLATE RAILWAY AND THE NICKEL PLATE RAILWAY were washed away at Westleyville, three miles east of Erie.

STORM HITS DELAWARE CITY. DELAWARE CITY, Del., Aug. 4.—The heaviest storm in years struck this city early this morning. The wind reached hurricane proportions.

E. M. HOPKINS SPEAKS ON EMPLOYMENT WORK. "Bad Business to Hire and Discharge Employees in Large Numbers," He Tells Rotary Club.

SHIPS CRASH IN STORM. Barge and Steamboat Collide Near Reedy Island.

DIAGRAMS SHOW STORM PROGRESS. Weather Forecaster Bliss' reference to the double-yolk egg construction of the storm area can readily be understood from a glance at the two maps.

DELAVARE SHIPPING ESCAPES. So far as is known no serious damage was done to ships on the Delaware River by the storm.

PHONE OUT OF SERVICE. The Bell Telephone Company was a heavy loser through the storm. In Philadelphia only 125 out of 15,000 telephones were out of service.

MEDIA CROPS RUINED. The storm in Media was the worst seen there in 12 years. Crops were badly damaged, telephone and telegraph wires were blown down.

CHESTER AND DELAWARE COUNTIES HIT BY TEMPEST. Number of Boats Sunk and Damaged by Storm.

FRUIT TREES AT NORRISTOWN STRIPPED OF THEIR BEARING. Tents Erected by Carnival Company Are Blown Down.

CONSHOHOCKEN HOUSES UNROOFED. NORRISTOWN, Pa., Aug. 4.—Roots of five houses on Spring Mill avenue, Conshohocken, were torn off by the gale this morning.

DELAVARE SHIPPING ESCAPES. So far as is known no serious damage was done to ships on the Delaware River by the storm.

PHONE OUT OF SERVICE. The Bell Telephone Company was a heavy loser through the storm. In Philadelphia only 125 out of 15,000 telephones were out of service.

MEDIA CROPS RUINED. The storm in Media was the worst seen there in 12 years. Crops were badly damaged, telephone and telegraph wires were blown down.

CHESTER AND DELAWARE COUNTIES HIT BY TEMPEST. Number of Boats Sunk and Damaged by Storm.

FRUIT TREES AT NORRISTOWN STRIPPED OF THEIR BEARING. Tents Erected by Carnival Company Are Blown Down.

CONSHOHOCKEN HOUSES UNROOFED. NORRISTOWN, Pa., Aug. 4.—Roots of five houses on Spring Mill avenue, Conshohocken, were torn off by the gale this morning.

DELAVARE SHIPPING ESCAPES. So far as is known no serious damage was done to ships on the Delaware River by the storm.

PHONE OUT OF SERVICE. The Bell Telephone Company was a heavy loser through the storm. In Philadelphia only 125 out of 15,000 telephones were out of service.

MEDIA CROPS RUINED. The storm in Media was the worst seen there in 12 years. Crops were badly damaged, telephone and telegraph wires were blown down.