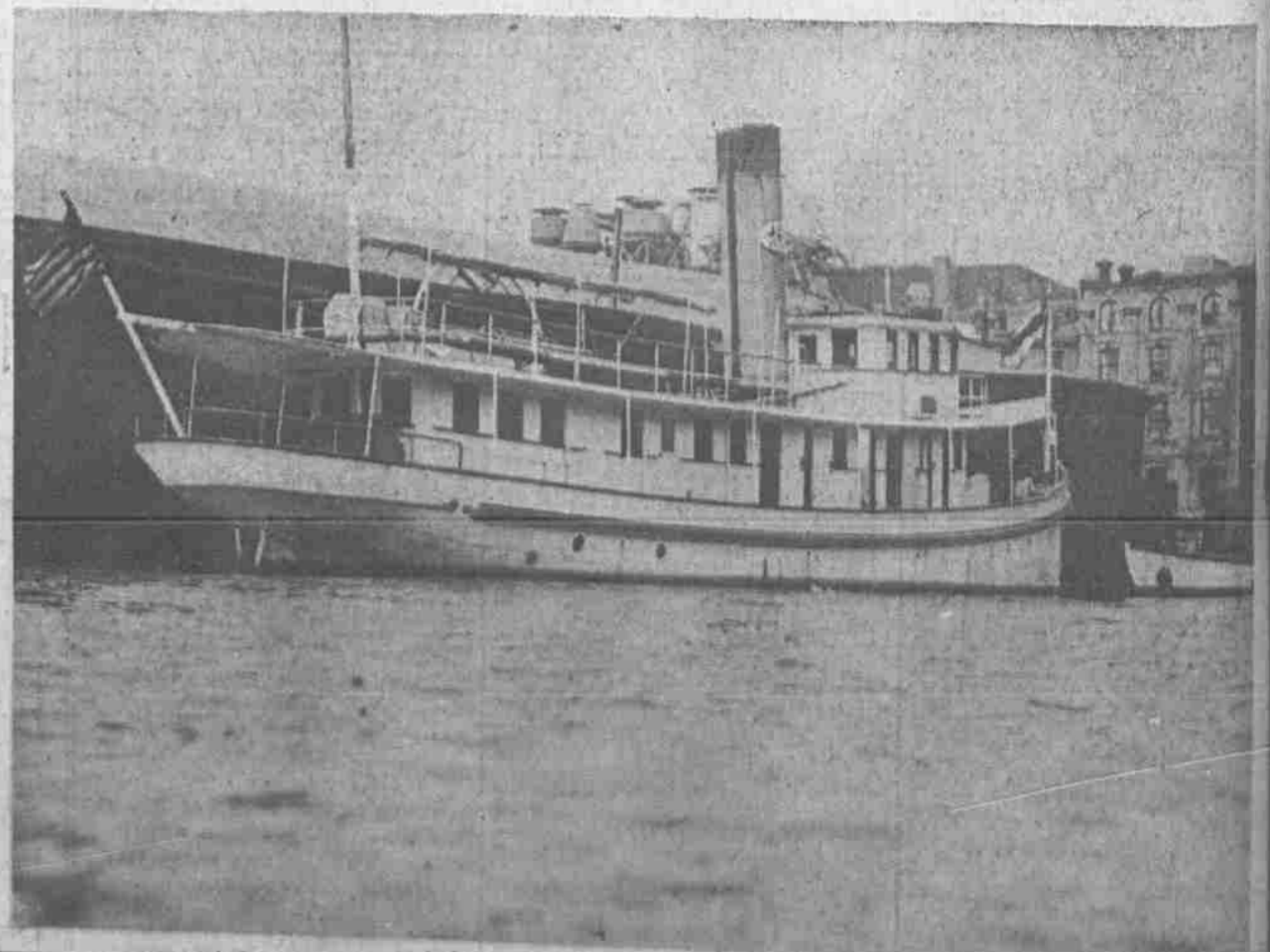
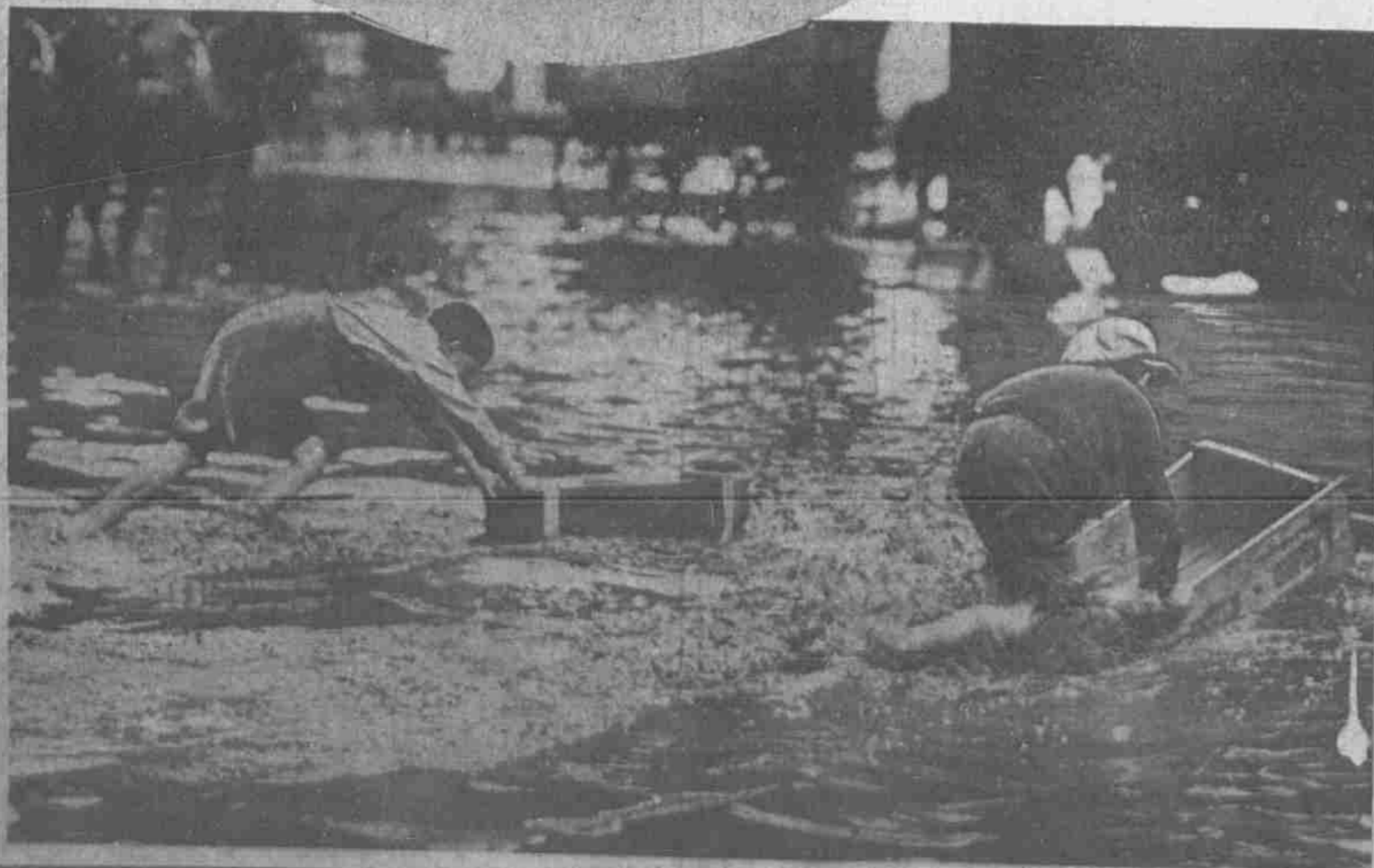
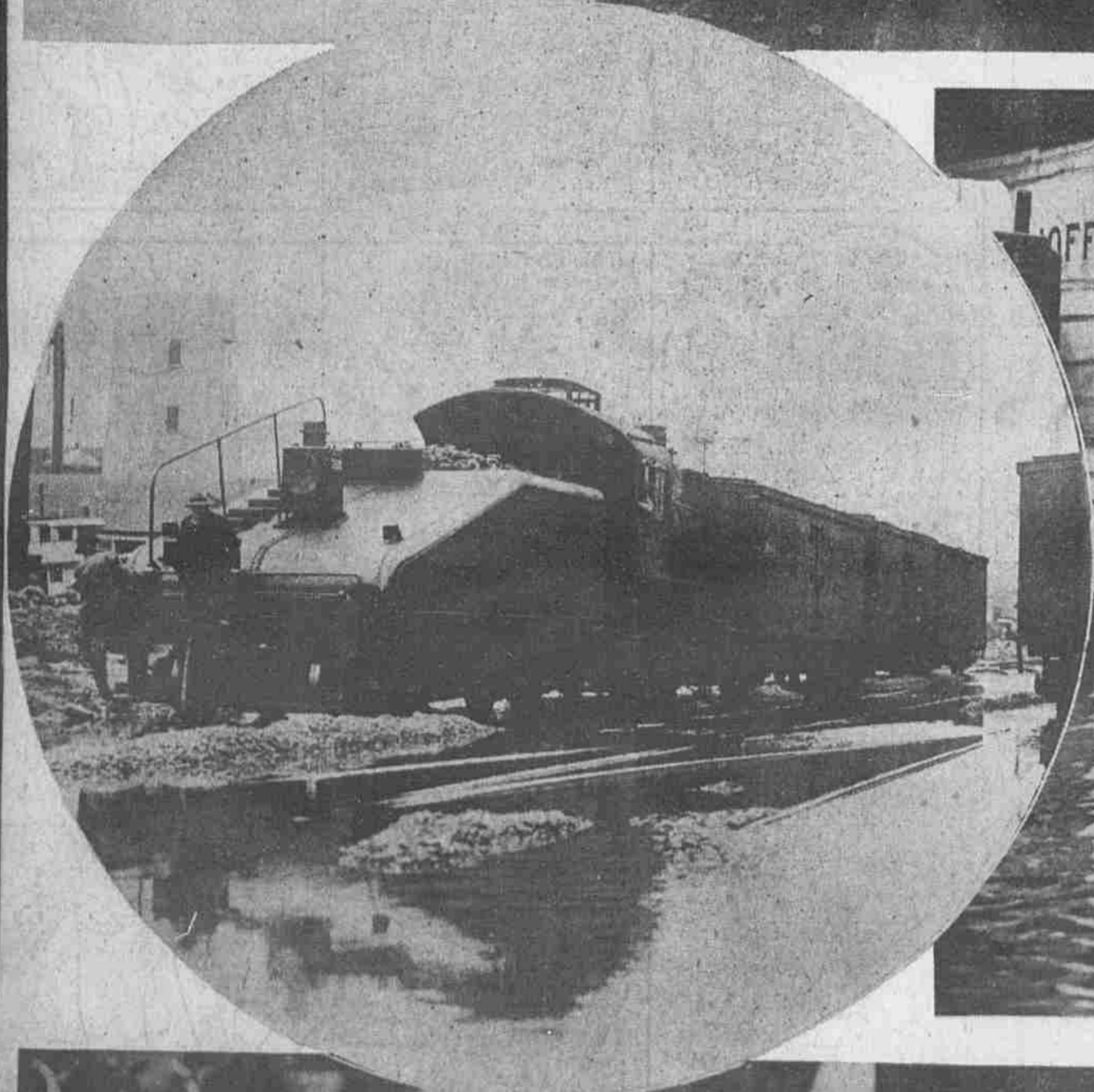




SCENES FROM PATH OF STORM WHICH CAUSED FLOOD THAT PUT PARTS OF CITY UNDER WATER



The top picture shows how the ordinarily peaceful Cobb's Creek ran out of bounds and overflowed the yards of the Pennsylvania freight station at 63d and Market streets, giving the building the appearance of an ark in a flood. Below, at the left, a switching engine is hastily pulling cars out of the up-creeping waters on Delaware avenue. Opposite is a lunchroom whose doors were entered by the flood. The bottom picture, at the left, shows how delighted small boys converted goods boxes into boats with which they merrily cruised the waters. On the right the picture indicates how the swollen Delaware lifted boats tied to their pier until the keels were almost even with the street level.