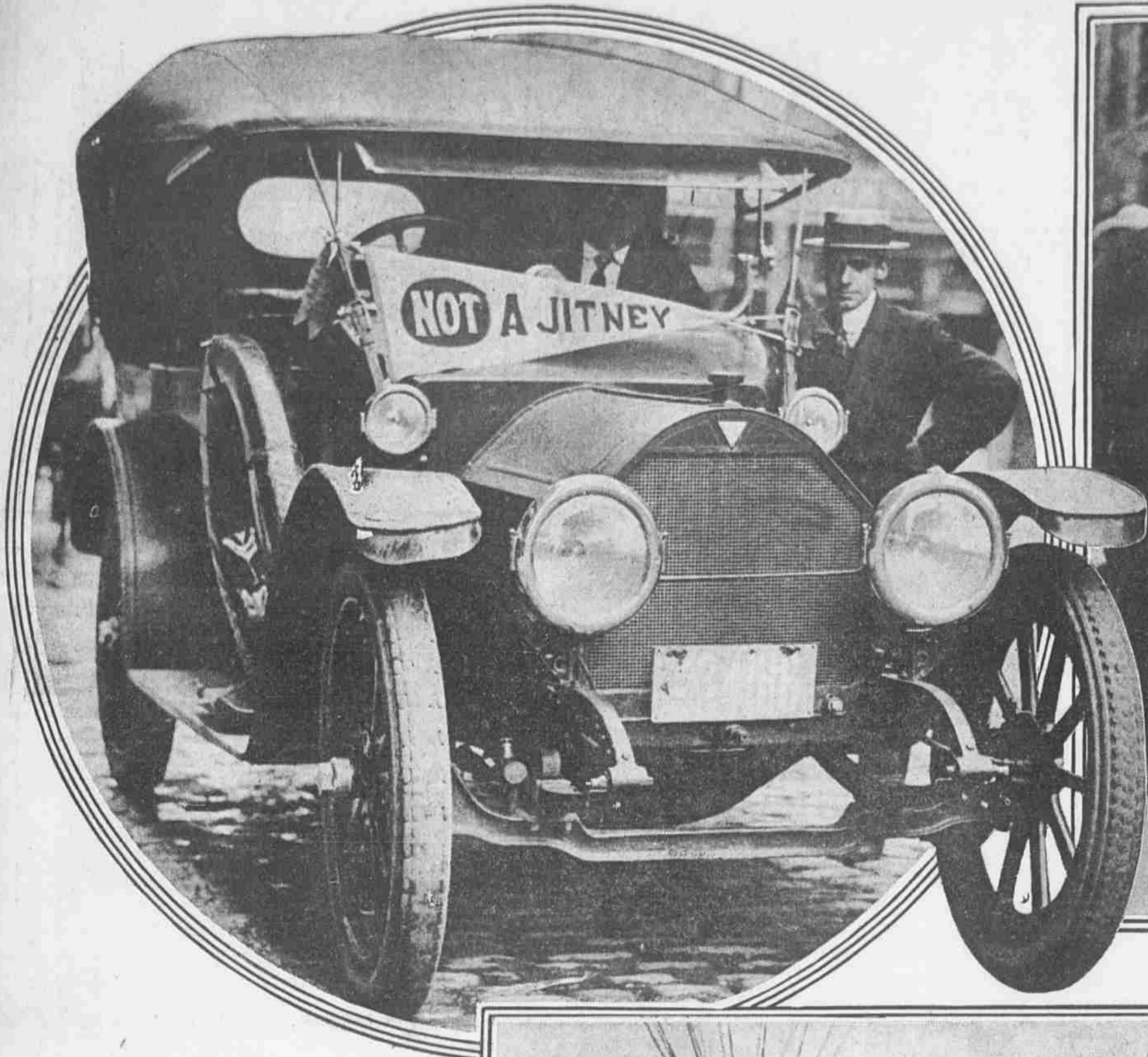


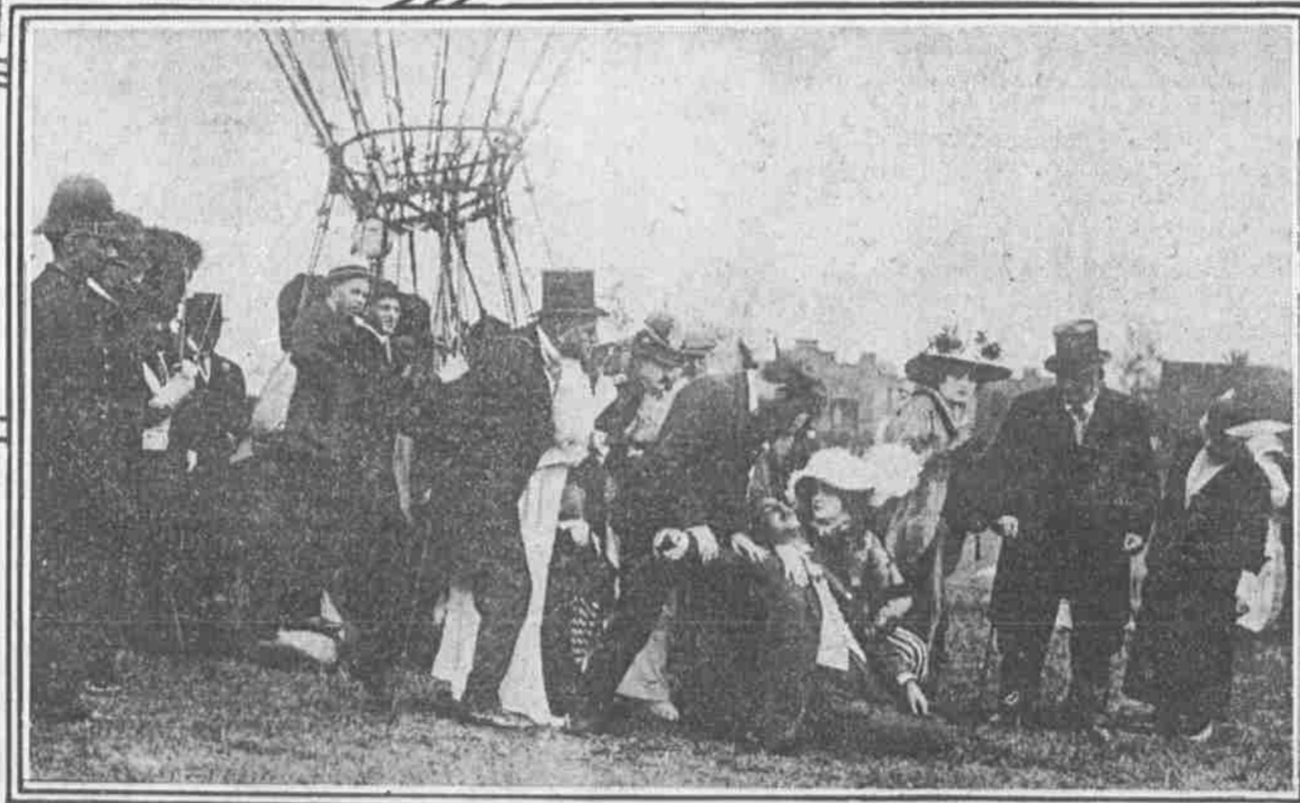
A PAGE OF PEOPLE AND THINGS FROM HOME AND NEARBY WHICH ARE PLEASANT TO LOOK AT



"TO JIT OR NOT TO JIT"
The first "Not a Jitney" sign to appear in Philadelphia is shown above. The prevalence of the "Jitney" occasionally makes it uncomfortable for the private owner. The sign above, imported from Los Angeles, is the answer. Henry M. Schadewald is the initiator in the car.

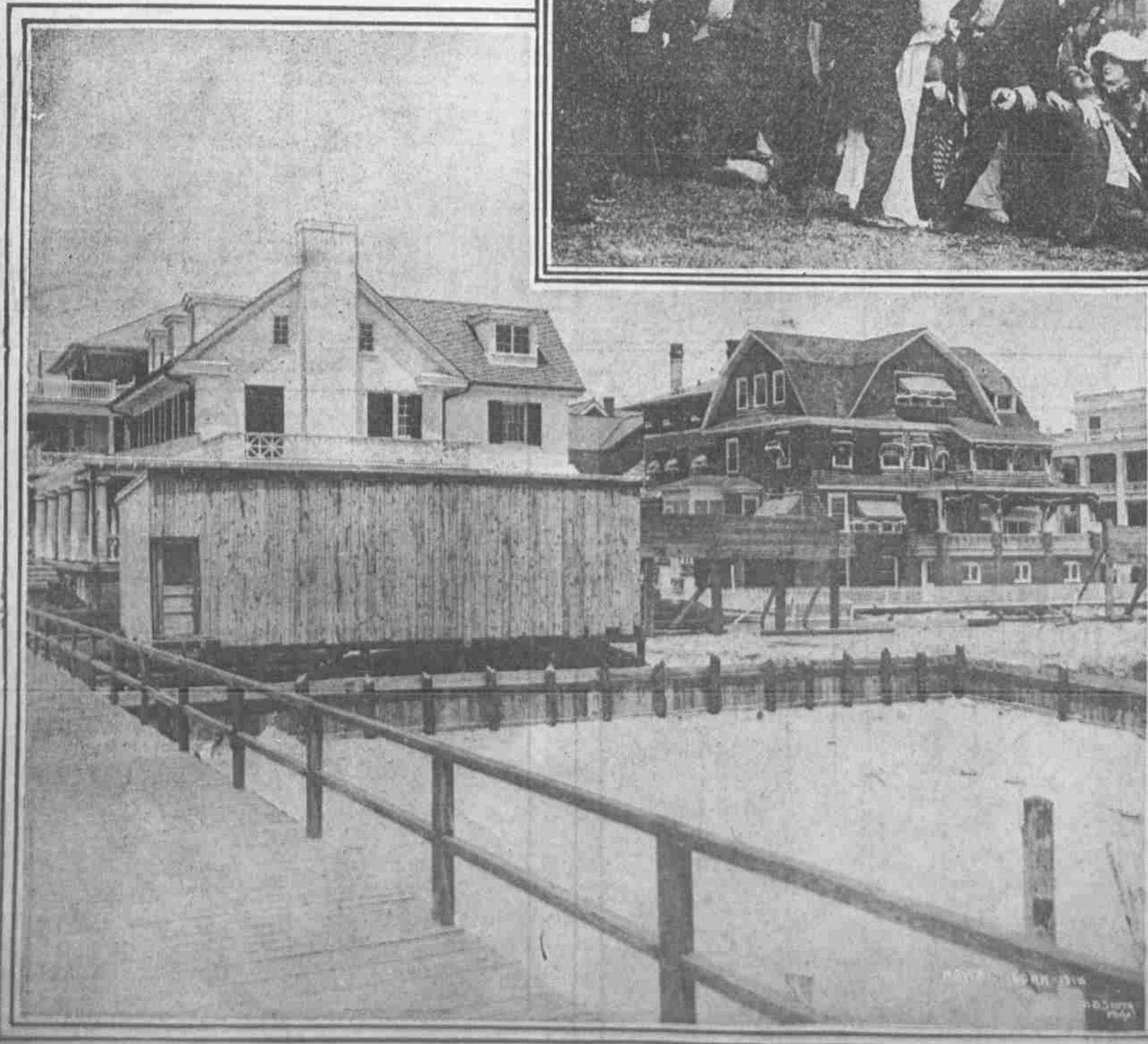


THERE IS NO LAW AGAINST IT
Furs are being worn while the thermometer scales furiously upward. The interest of beauty seems to be above that of comfort.

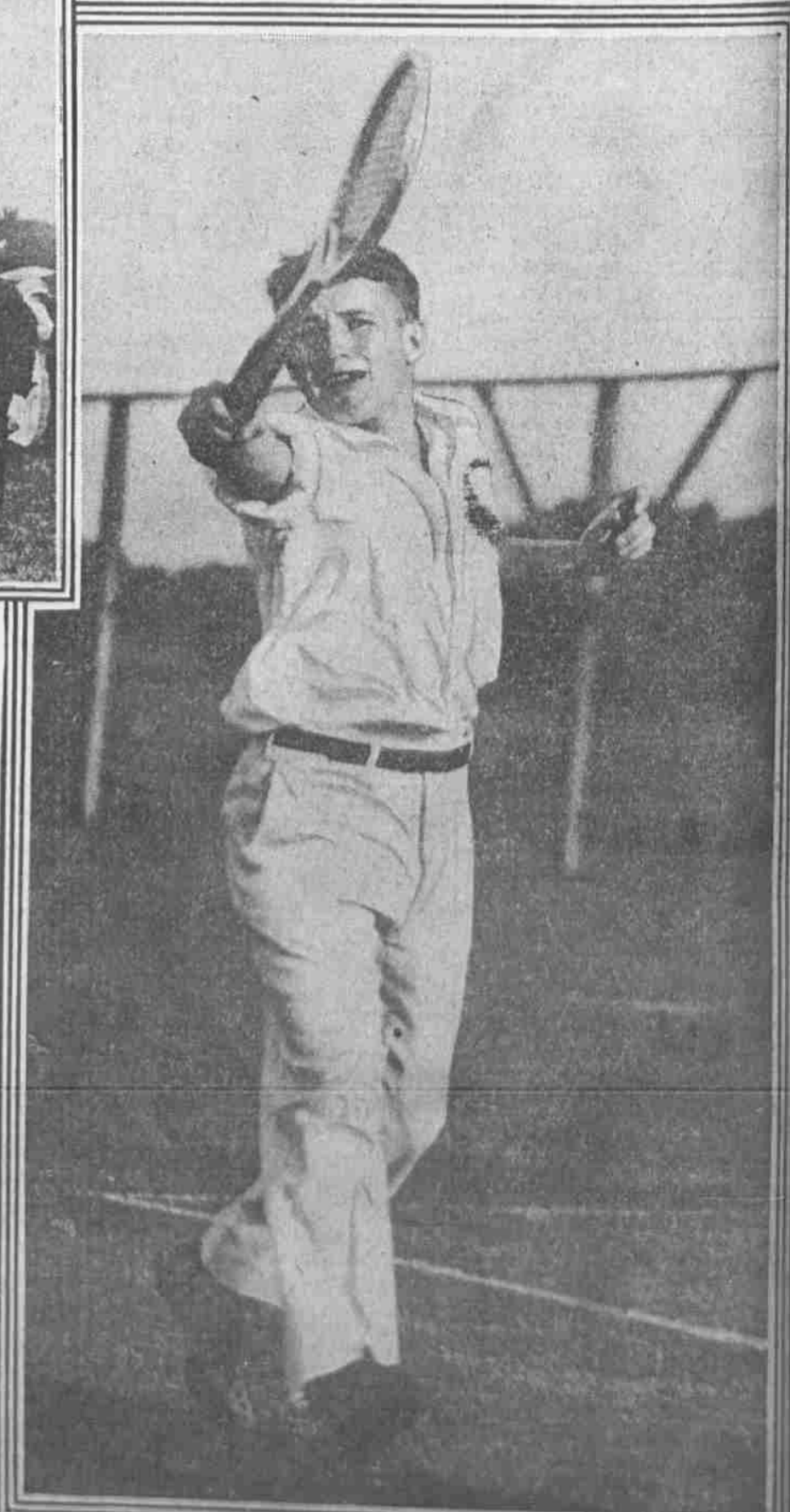


THE BEGINNING AND THE END IN ONE

The balloon which flew over this city yesterday made two flights. The first was to a height of some 30 feet. From that height a man was dropped. The balloon then rose to 300 feet and dropped a dummy. This picture shows the start of the final flight and the end of the moving picture episode for which it was made.



CONGRESSMAN WILLIAM S. VARE IS ANNOYED BY THE FOREGROUND
This picture was taken looking inward from the beach. It shows the shack built in front of the Congressman's house, at Chiles, completely blocking his view of the ocean. A lawsuit for the removal of the shack is pending.



SYDNEY THAYER, JR., OUTFACING THE BALL
An effective method when you are trying a difficult backhand. Mr. Thayer was captain of the Amover tennis team which defeated Exeter this year.