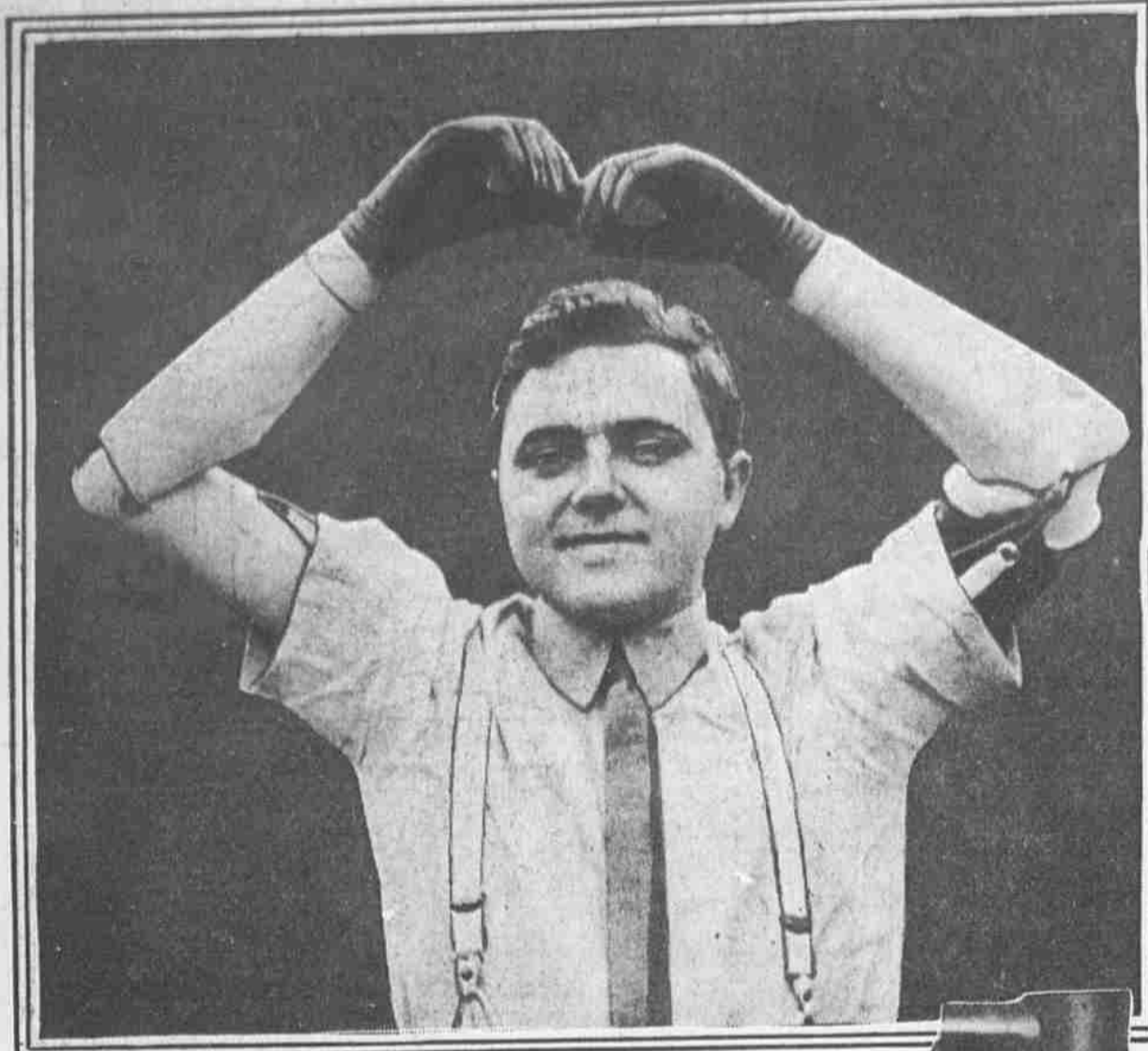
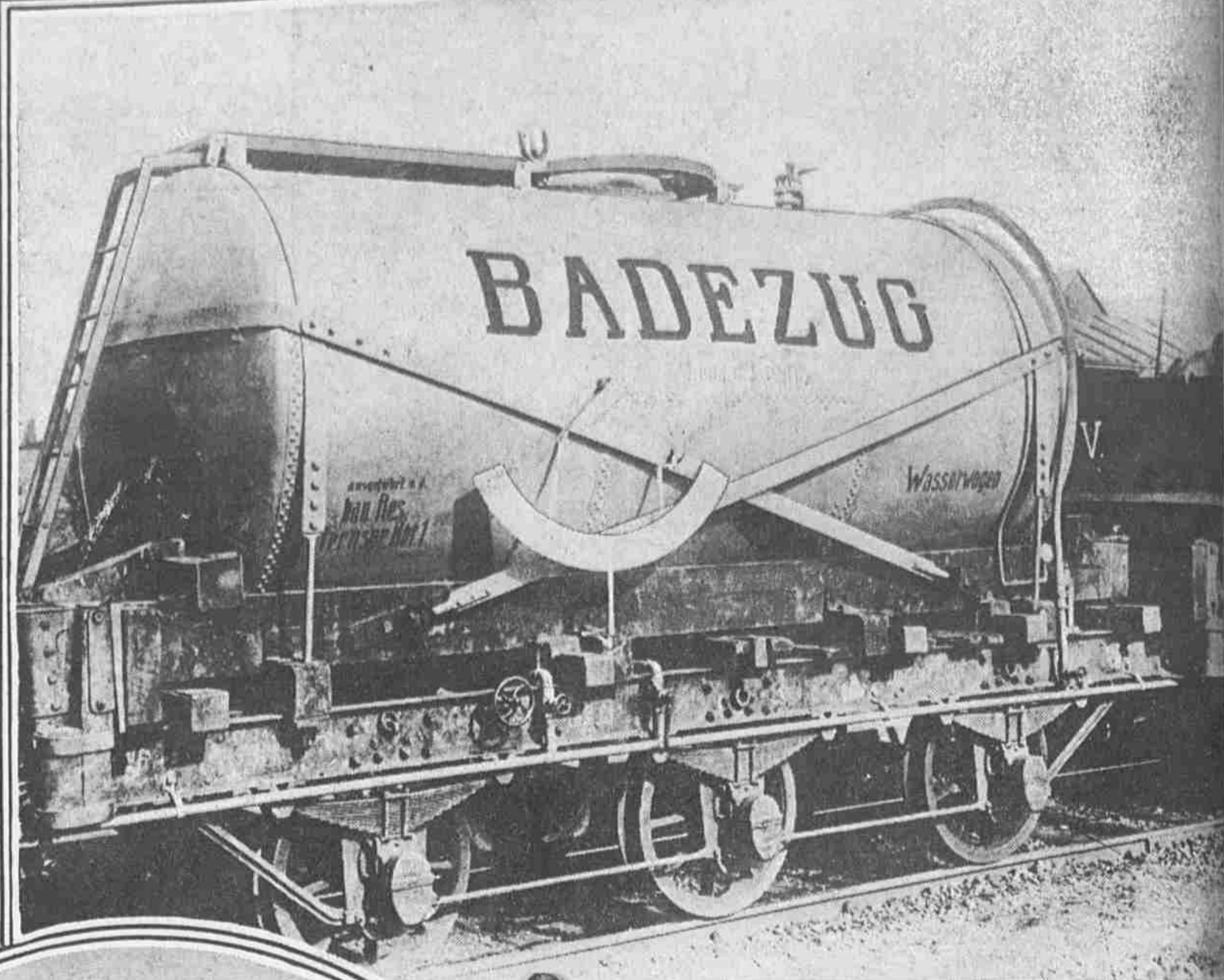




"GOD HATH MADE MAN UPRIGHT; BUT THEY HAVE SOUGHT OUT MANY INVENTIONS"—Ecclesiastes, vii, 2



ARTIFICIAL ARMS FOR WOUNDED TOMMIES
An invention for soldiers who have lost one or both arms is the artificial limbs which have movable elbows, wrists and fingers, making it possible to do anything which can be accomplished with the human arms, such as shaving, carrying, writing and dressing.



Copyright by Underwood & Underwood
THE GERMAN ARMY'S "WATER WAGON"
The train consists of an engine, water tank and three cars fitted out with shower baths for 50 soldiers. The train moves from point to point along the battlefield.



"SAFETY FIRST" COLLARS FOR SAILORS
The Queen has ordered out of her privy purse large numbers of these safety collars, which are now used by the sailors of the British Navy. The method of using these collars is plain from the picture.



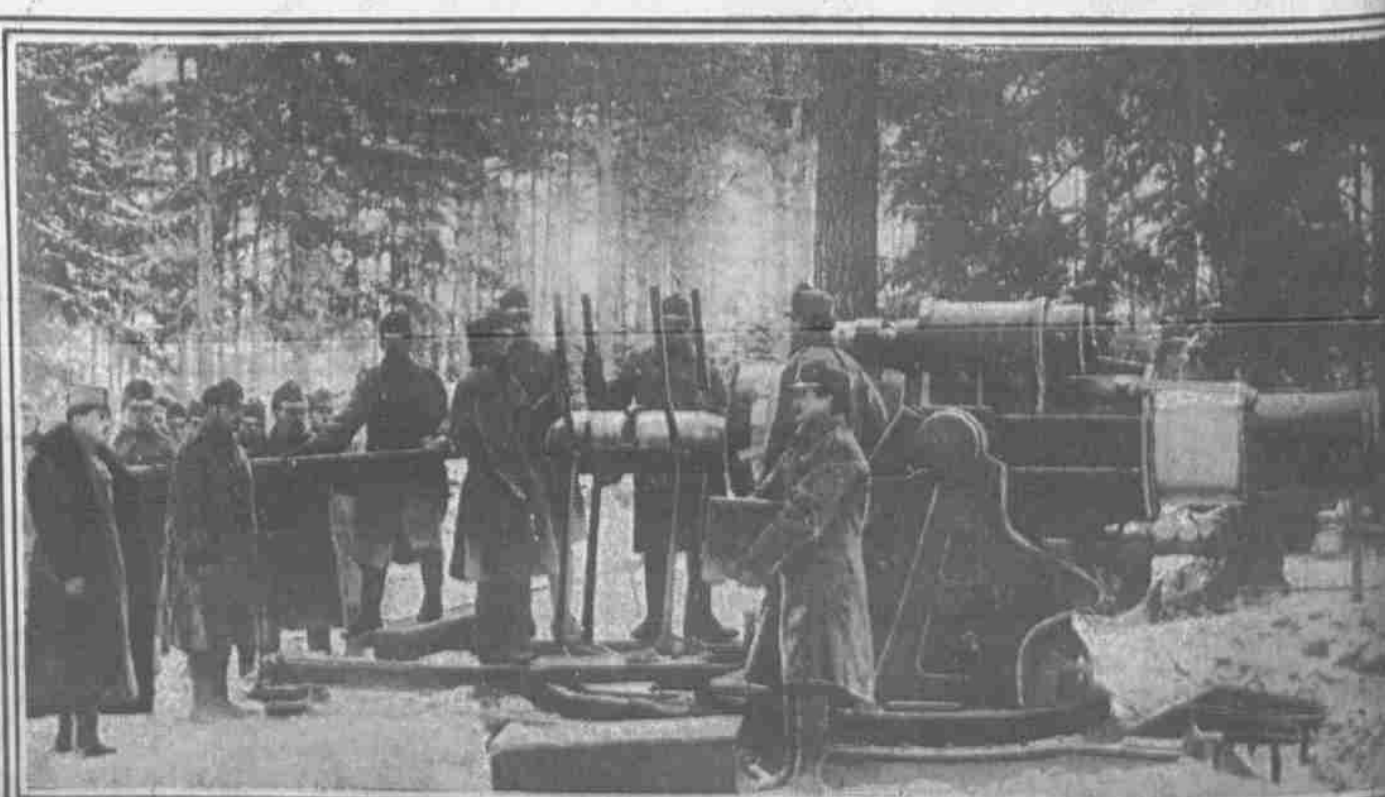
THE TELESCOPE RANGE-FINDER PUTS AN END TO THE PICTURESQUE
The German officer, seen above, no longer "dashes into the fray" or "appears on a white charger to rally his men." Miles behind the battle line he directs the fire of his artillery, without romance but with deadly accuracy.



PROPELLERS FITTED TO GERMANY'S AERO MISSILES
This small propeller, with three three-inch blades, was found attached to an exploded bomb dropped on a field at Beldington, Northumberland, England, from a German Zeppelin in a recent raid.



A MISSILE WHICH CUTS THROUGH BARBED WIRE
This French gun, called Ferte Amazur, fires a bomb fitted with a circular set of scythes to cut through entanglements. Wire is one of the most potent contrivances of modern warfare, as it may break up a charge when artillery fire has failed.



GREAT 12-INCH HOWITZER WHICH IS LOADED BY A MINIATURE RAILROAD
It is one of those used by the Austrians in the capture of Przemyel. The shell is slid into the breach along rails as shown in the picture. The great distances to be covered in the eastern theatre of war have made necessary such a gun, which can be taken apart, shipped on motors and reassembled in a short time.