



SCENES AND PERSONS OF NOTE IN THE WORLD'S NEWS DAY BY DAY AS REPORTED BY THE CAMERA



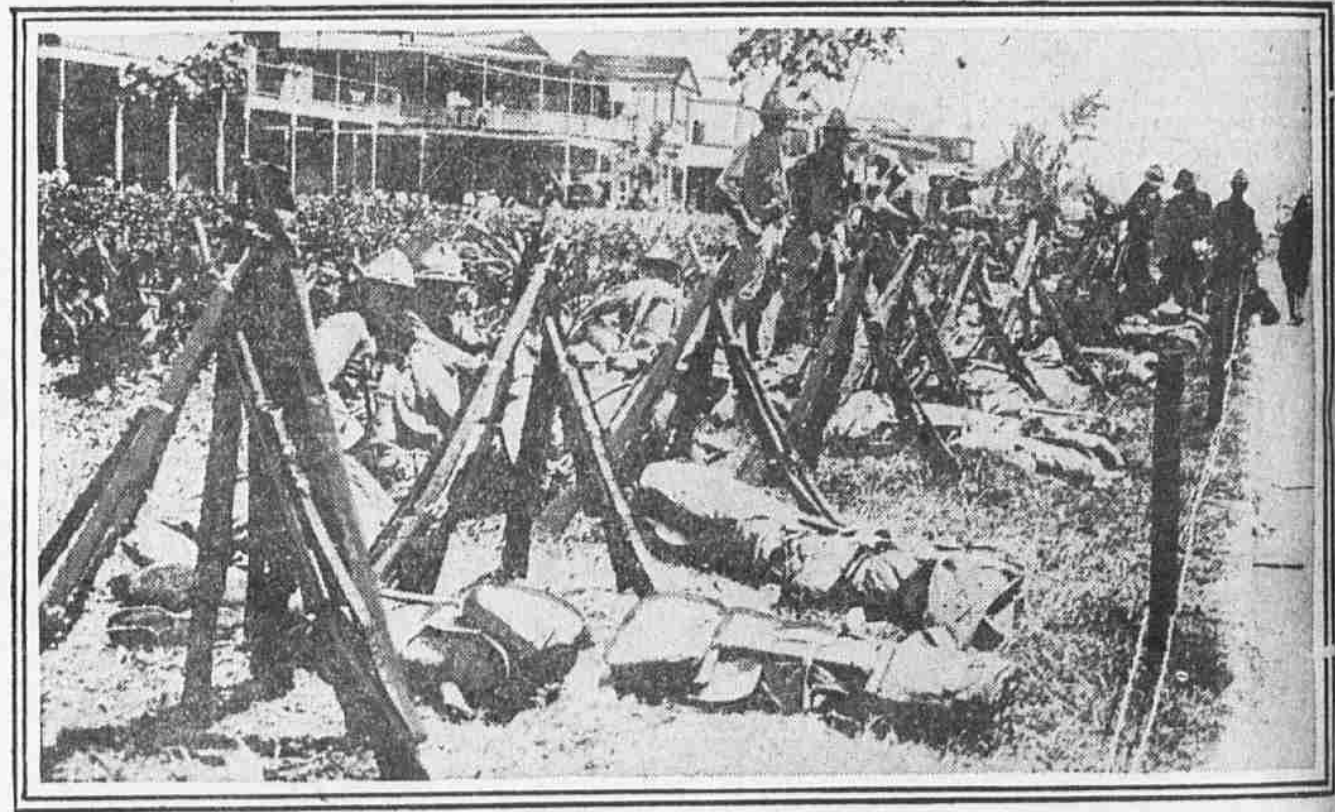
—Photo by Betty & Way.
MRS. GEORGE GORDON MEADE LARGE
 President of the flower show and fete, which today is in possession of Rittenhouse Square. Many persons prominent in the social world will attend.



PRINCIPALS IN COMING WEDDING
 From left to right are Miss Ellen Yuille, Anthony J. Drexel Biddle, Jr., and Miss Mary L. Duke as they were photographed at a recent meeting of the United Hunts at Belmont Park, L. I. The latter pair will be married June 16. Miss Yuille will be a bridesmaid.



GENERAL PHILIP KEARNY
 This statue has been erected in Arlington Cemetery, near Washington, by survivors of his famous brigade, most of whom live in New Jersey.



UNITED STATES SOLDIERS ON GUARD AT COLON FIRE
 This city on the Pacific side of the Canal Zone was recently visited by a disastrous fire which destroyed hundreds of homes, especially in the native quarter, and caused enormous damage. American troops were sent to maintain order and prevent looting.



ITALIAN AMBASSADOR AND FAMILY, WHOSE COUNTRY MAY SOON BE IN WAR
 Count Maschi di Cellere, the Italian Ambassador to Washington, his wife and two children are shown at a recent charity fete in Washington. According to indications, this will be another diplomatic family to be isolated because of the war.



PENN STUDENTS DON INSIGNIA OF APPROACHING GRADUATION
 Seniors of the University of Pennsylvania have appeared in cap and gown, according to the old custom, which dictates these garments as a sign of their approaching graduation two weeks hence. The campus is now dotted with these figures in solemn, scholastic garb.