

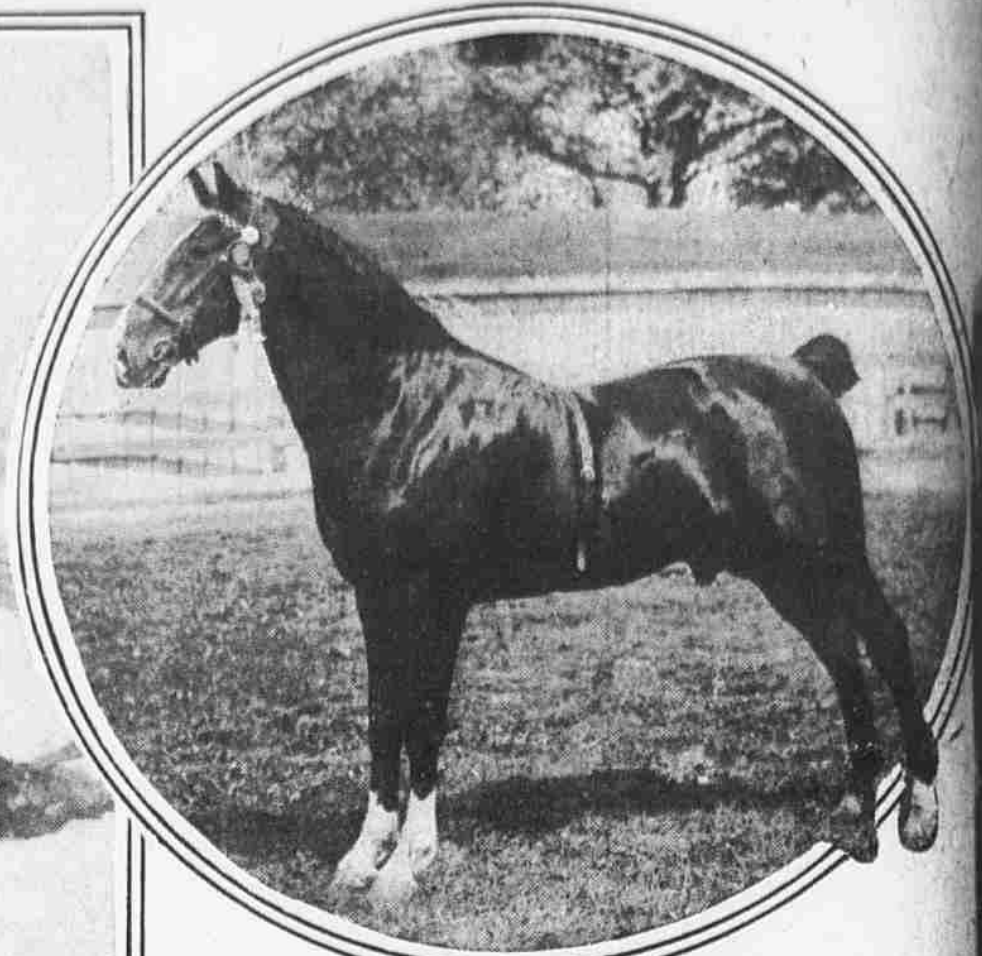


Evening ILLUSTRATED Ledger

THURSDAY

April 22, 1915

SCENES FROM PLACES UNDER WAR'S INFLUENCE BOTH AT HOME AND ABROAD AS CAUGHT BY CAMERA

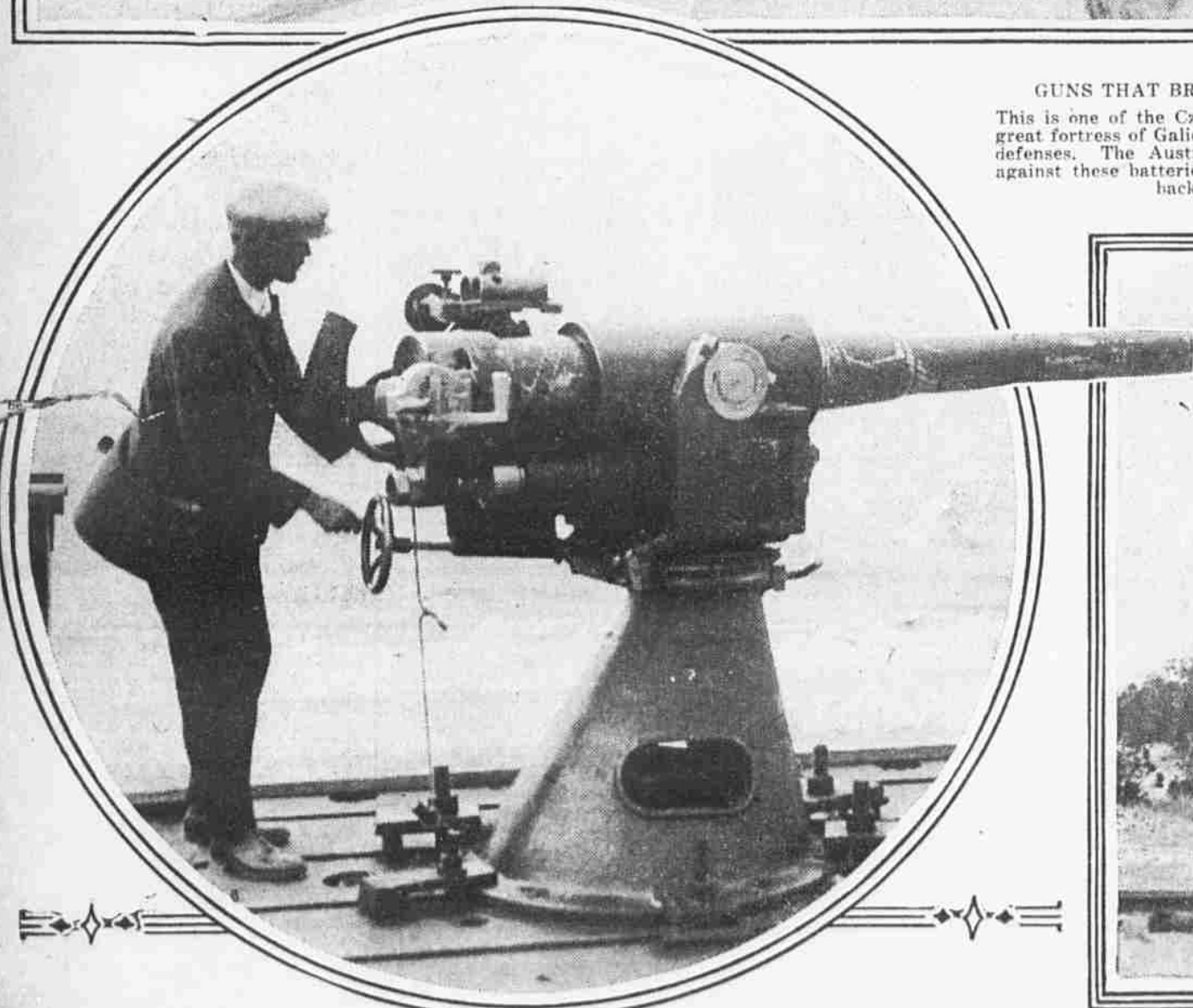
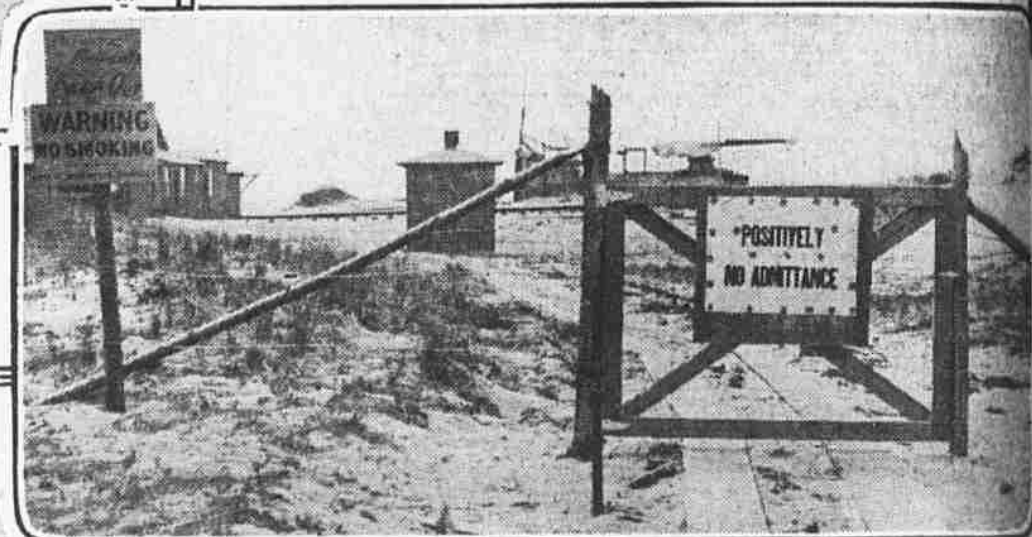


BEAUTY'S FASHION

Imported English hackney stallion from Williden Farms which will be one of the entries at the Indoor Horse Show. He has been a winner in England and America.

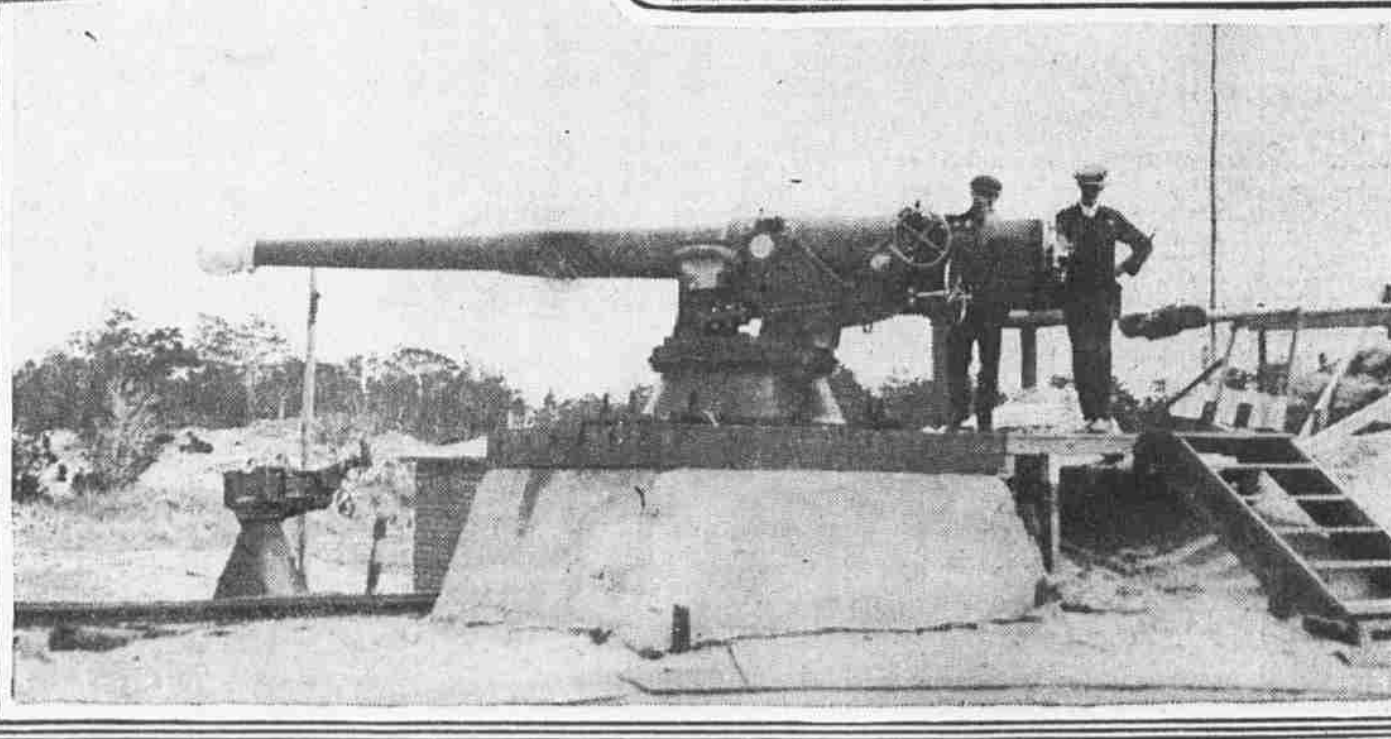
GUNS THAT BROUGHT DOWNFALL OF PREZMSYL

This is one of the Czar's batteries which for months ringed the great fortress of Galicia and kept up an incessant fire on its outer defenses. The Austrian commander repeatedly hurled sorties against these batteries, but the assailants were as often driven back under a devastating fire.



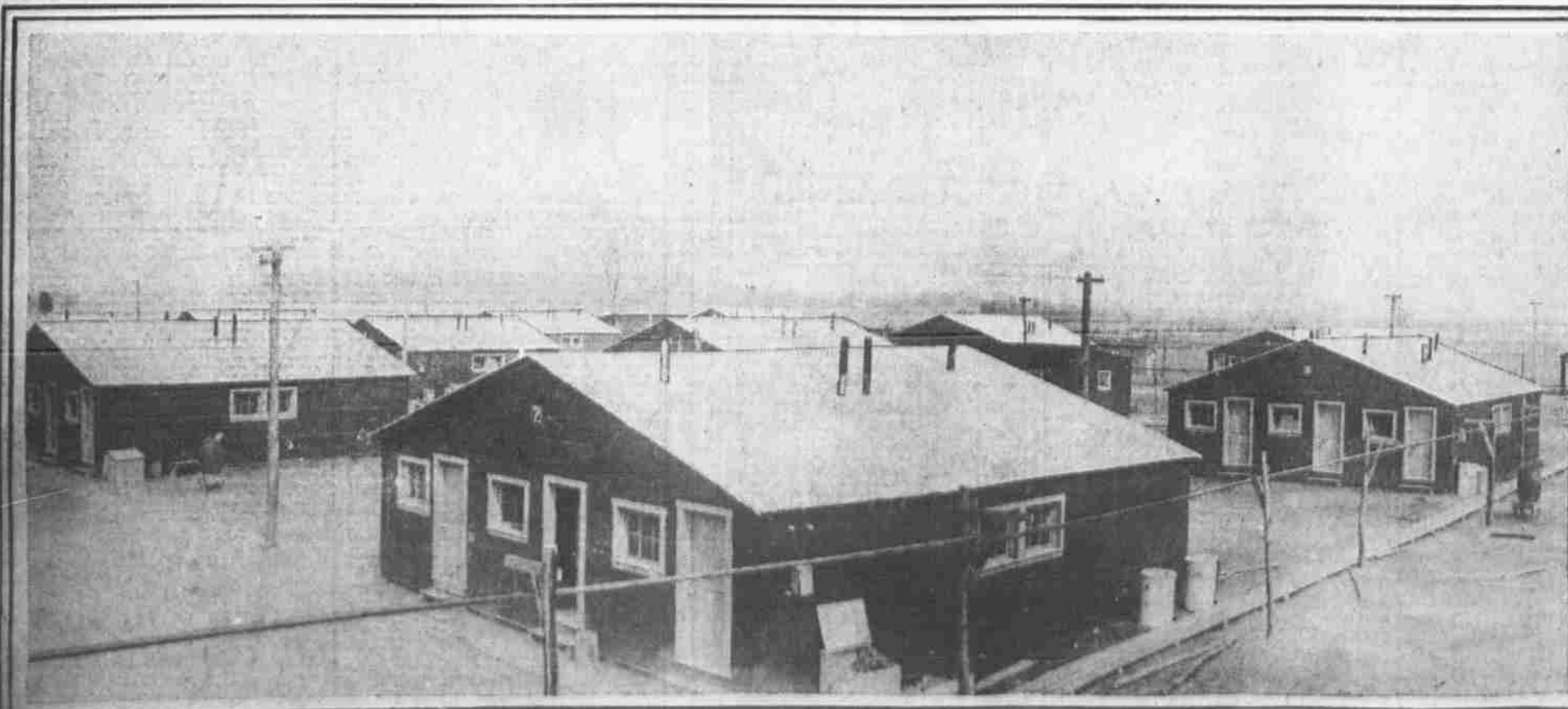
3.3-INCH GUN ON STEEL PEDESTAL AND CONCRETE BASE

Its shells are hurled out into the bay at Cape May, in the background. The turning mechanism is being tested here. An article describing a trip to the proving grounds will be found in the news pages. The steel company has leased about 6000 square yards of sea beach here, lying in a strip about 100 yards wide, where shells and ordnance are proved before being shipped to Europe.



ONE OF THE GUNS BUILT BY THE BETHLEHEM STEEL COMPANY FOR THE BRITISH ARMY

The 4.7-inch rifle, immediately above, is being tested on the Bethlehem Steel Company's reservation on the New Jersey bay shore about a mile and a half north of Cape May Point and three miles from Cape May proper. The tests are carried out under the observation of a British army officer. The upper picture at the right shows the entrance to the proving grounds.



SCENES FROM PENNSGROVE, THE JERSEY WAR-MADE TOWN, WHICH HAS GROWN UP LIKE A MUSHROOM IN THE NIGHT.

Only yesterday, so to speak, Pennsgrove was a spot on the sands, a little village of 200 people. Now it is estimated to have 7000 inhabitants, with more coming in every day. The remarkable stimulation is due to the extraordinary demands for powder created by the European war, a demand which the DuPont company is making every effort to supply, working shifts by day and night and raising wages to attract more workers. At the right is shown a fresh batch of workmen who have just arrived in search of jobs. The other picture shows a group of the houses and sheds which are springing up overnight to keep pace with the ever-growing population.

