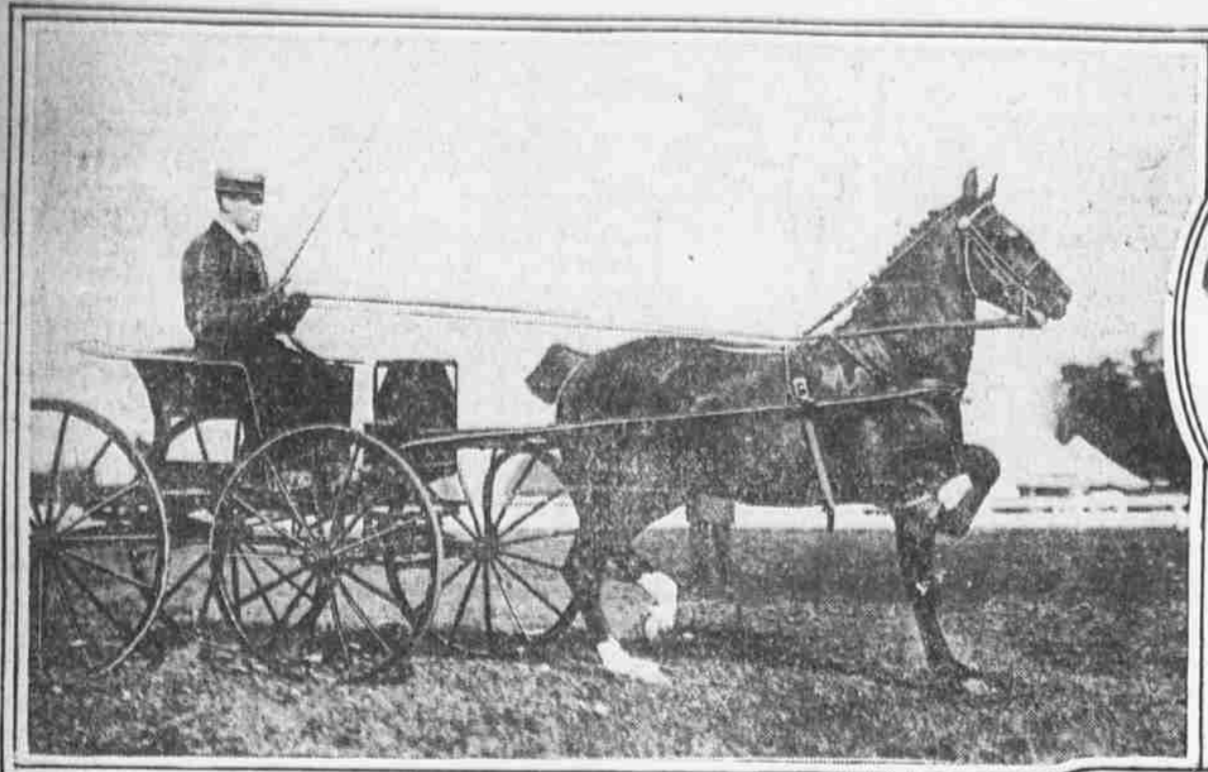




Evening Illustrated Ledger

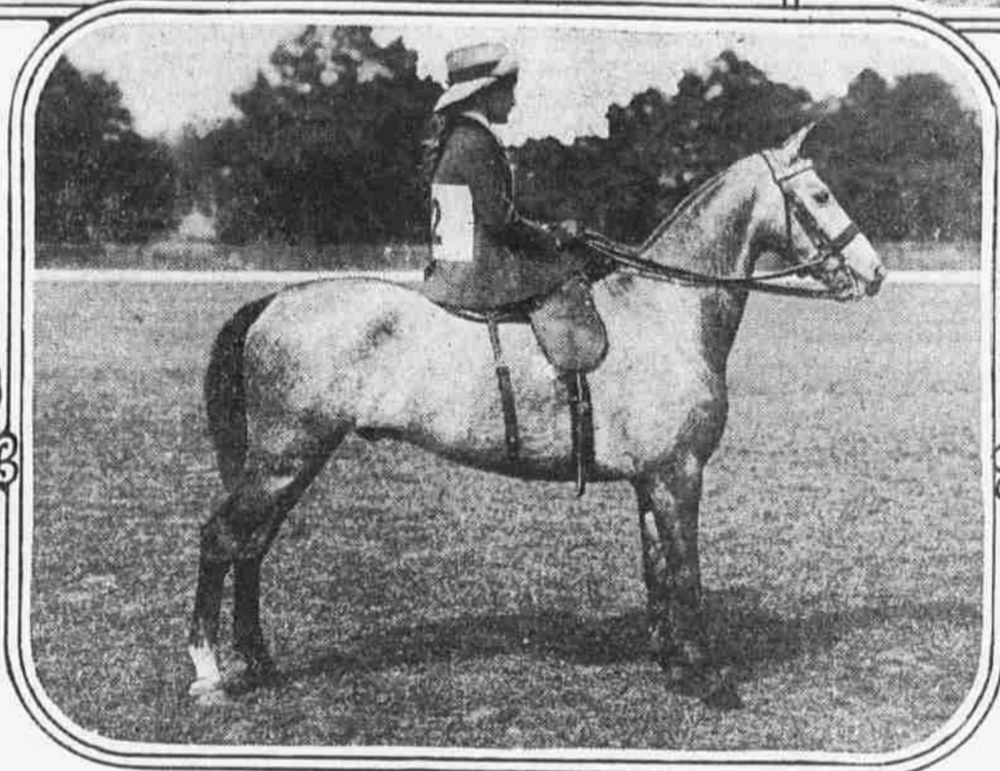
MONDAY
April 19, 1915

ENTRIES FOR THE INDOOR HORSE SHOW AND PERSONS AND PLACES IN THE NEWS OF THE DAY



MRS. WALTER C. HANCOCK
Main spring of the Philadelphia Indoor Horse Show and the chairman of the committee.

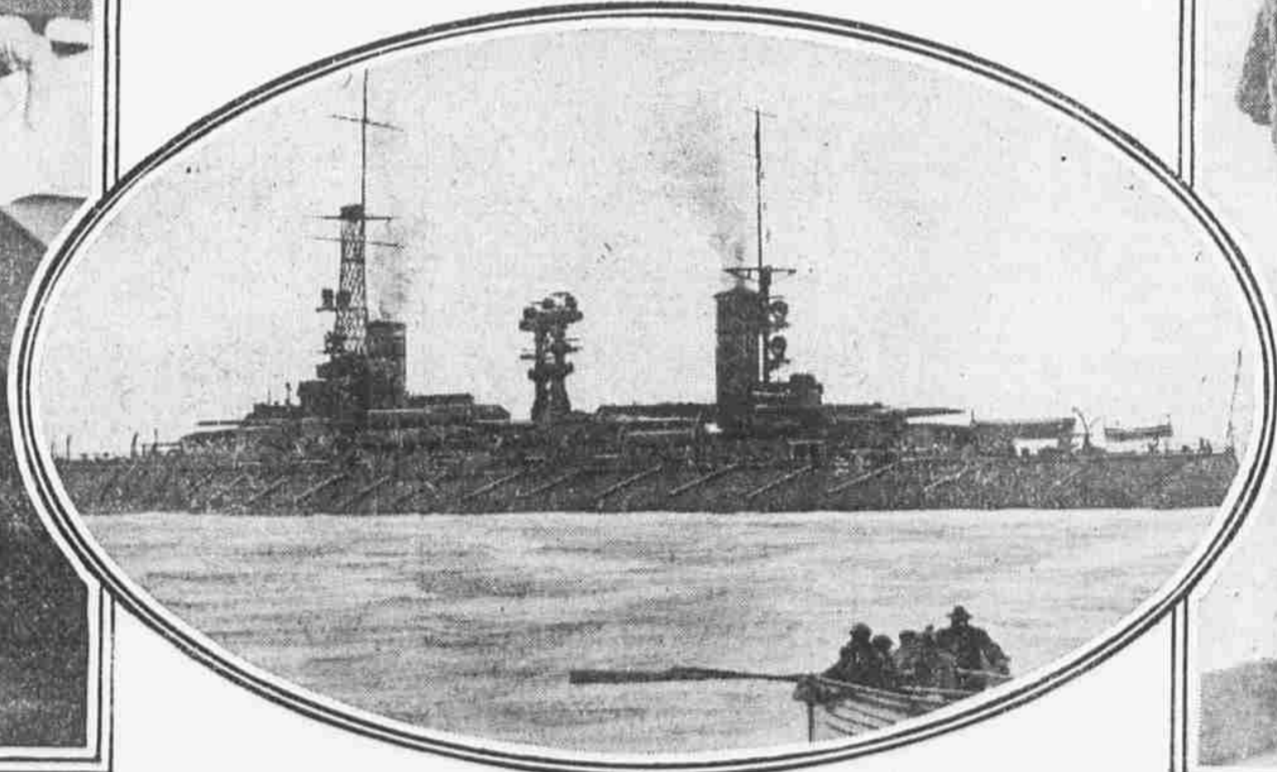
DARK BLUE
A Williden Farm champion and winner of many blues. He was sired by Champion Oxford out of Imp. Mimbridge Mandess.



MISS ISABELLA WANAMAKER
And her registered hackney mare Natoma (by Oxford). She will be seen in the ring also with her superb pair, Eve and Suave.



MISS ANNE ASHTON UP
She, with her unbeaten pony, First Whip, will be among the figures of note at the 3d Regiment Armory next Thursday, Friday and Saturday.



DR. HARRY PLOTZ
Copyright by Dan News Service.
This New York hospital physician, though less than 25 years old, is said to have isolated the bacillus of typhus and discovered a prophylactic vaccine.

BATTLESHIP MORENO SAILS FOR NEW HOME
After a delay of four months, the new Argentine warship is shown as she moved out to sea. The pilot boat is seen leaving her.

PADEREWSKI ARRIVES FROM WAR ZONE
Photo by Bath.
The great Polish pianist is pictured here with Mme. Paderewski as they arrived the other day direct from their war-torn country.



MEN GROW OLD FAST ON THE FIGHTING LINE
By Eastman Kodak Company.
An intimate view of trench life in an advanced French position held throughout the winter. Note the youths grown full bearded.

LIFE BEHIND THE SCENES IN THE TRENCHES
By Eastman Kodak Company.
A French heavy battery position in the Vosges Mountains. Note the concrete base and winter hut, also the trench mortar for hurling grenades.