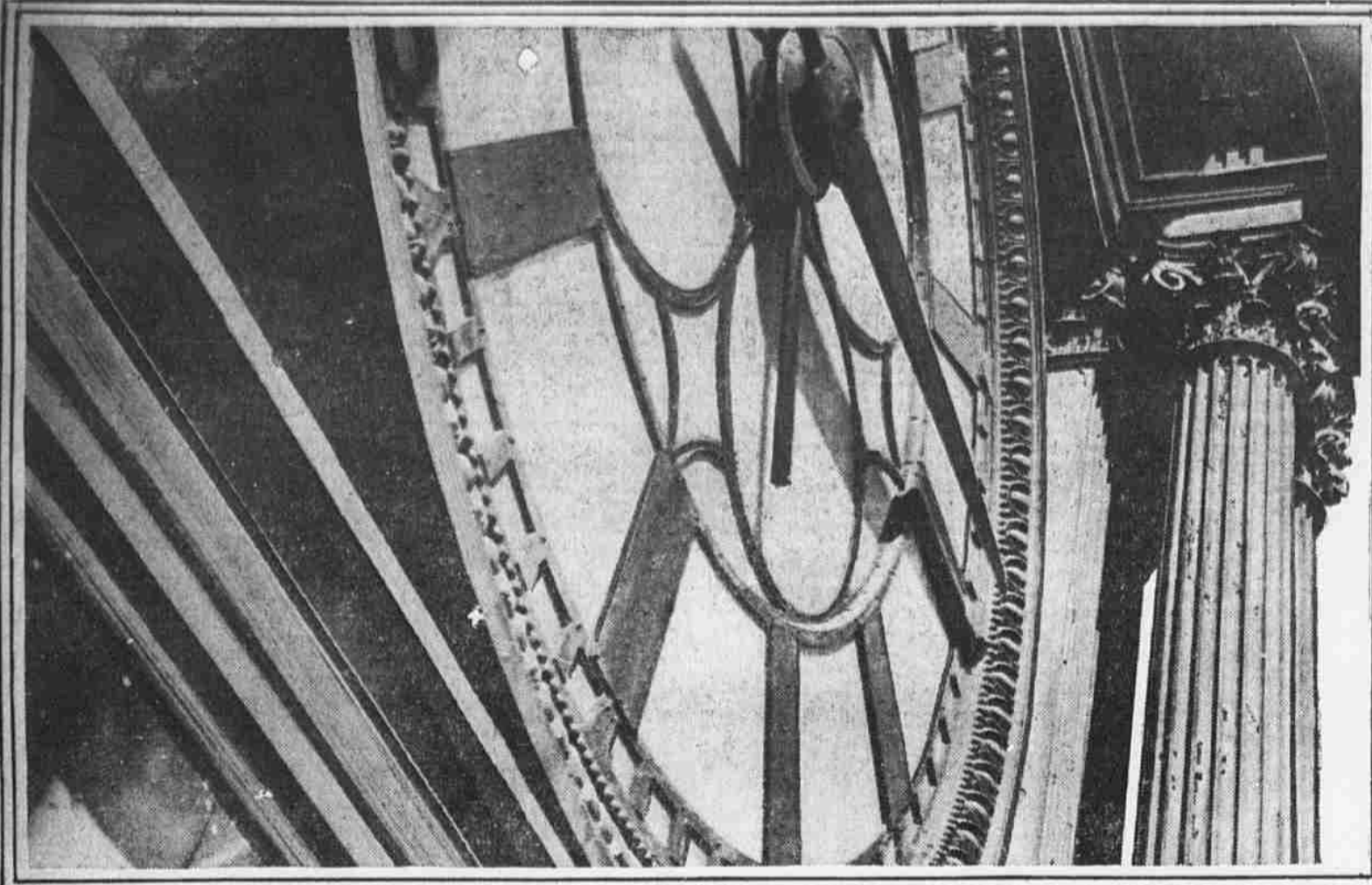


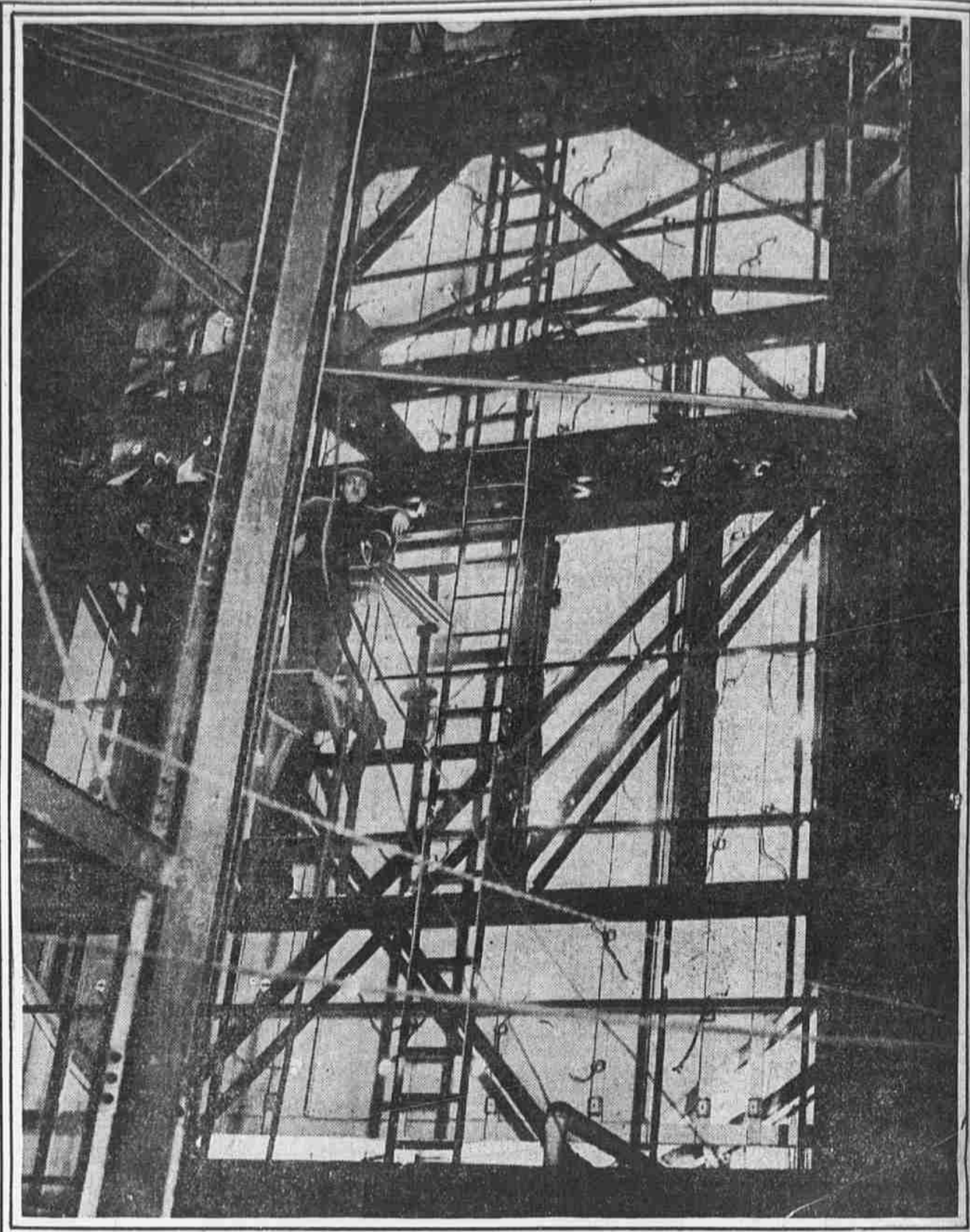


## THE CITY HALL CLOCK FROM THE INSIDE AND SOME OF THE MEN WHO FIGURE IN THE CITY'S PUBLIC LIFE



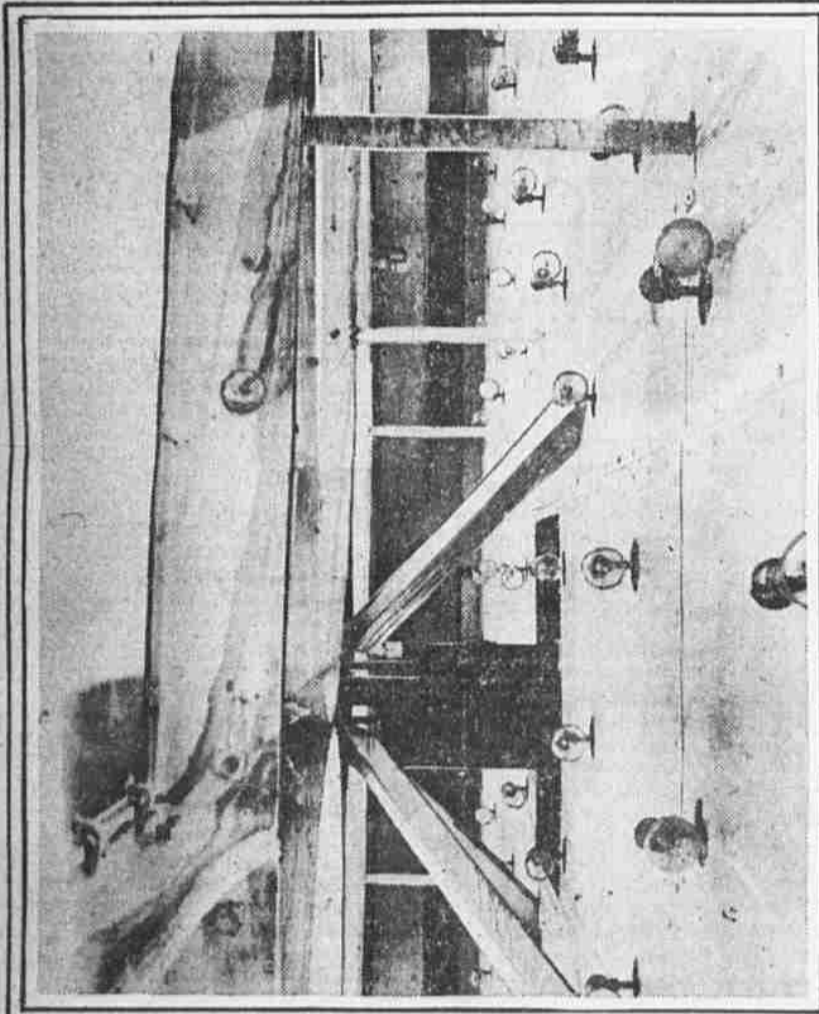
THE CLOCK FACE FROM A NARROW LEDGE BENEATH

No facilities have been provided for the photographer who wishes to take a close-up view of the entire face, so this was the best that could be done. Its diameter is 26 feet and the hands go around 361 feet above the pavement.



HOW THE CLOCK FACE APPEARS FROM THE INSIDE LOOKING OUT

It is safe to say that few persons out of the hundreds of thousands who glance at the City Hall clock daily have any idea of what its interior looks like. This is it—more like the interior of a factory than a clock.



BETWEEN THE INNER AND OUTER FACES

The round object in the lower part of the picture is the great axle on which the hands turn. The rows of globes are the electric lights which keep the face illuminated so citizens can tell the time miles away.



THIS DIAL CONTROLS THE CLOCK'S MOVEMENTS

Standing alongside is James G. Gaskill, nurse and caretaker of the big clock. It is his business to keep his finger on its pulse and correct any abnormal movements or jumpy tendencies.



SNAPSHOTS OF CITIZENS AND OFFICIALS MORE OR LESS IN THE PUBLIC EYE SOME OF WHOM YOU MAY NOT KNOW



William H. Bull is chief of the Bureau of City Property under whose jurisdiction the City Hall clock comes. When it needs repairs it is his business to give the orders.



This is George G. Pierie, registration commissioner and the man who made that old song, "The Darby Ram," famous. He is a big favorite at Clever Club dinners and knows many people.



Who was Director of Public Works under Mayor Rayburn. He is—George H. Siemens, member of an engineering firm now and probably glad he is out of politics and public life.

Presiding Judge Charles B. McMichael, of Common Pleas Court No. 4, and Charles P. McMichael, his son, who is a real estate assessor. At first glance the resemblance may not appear strong, until you compare the noses which are exactly alike in shape and size.