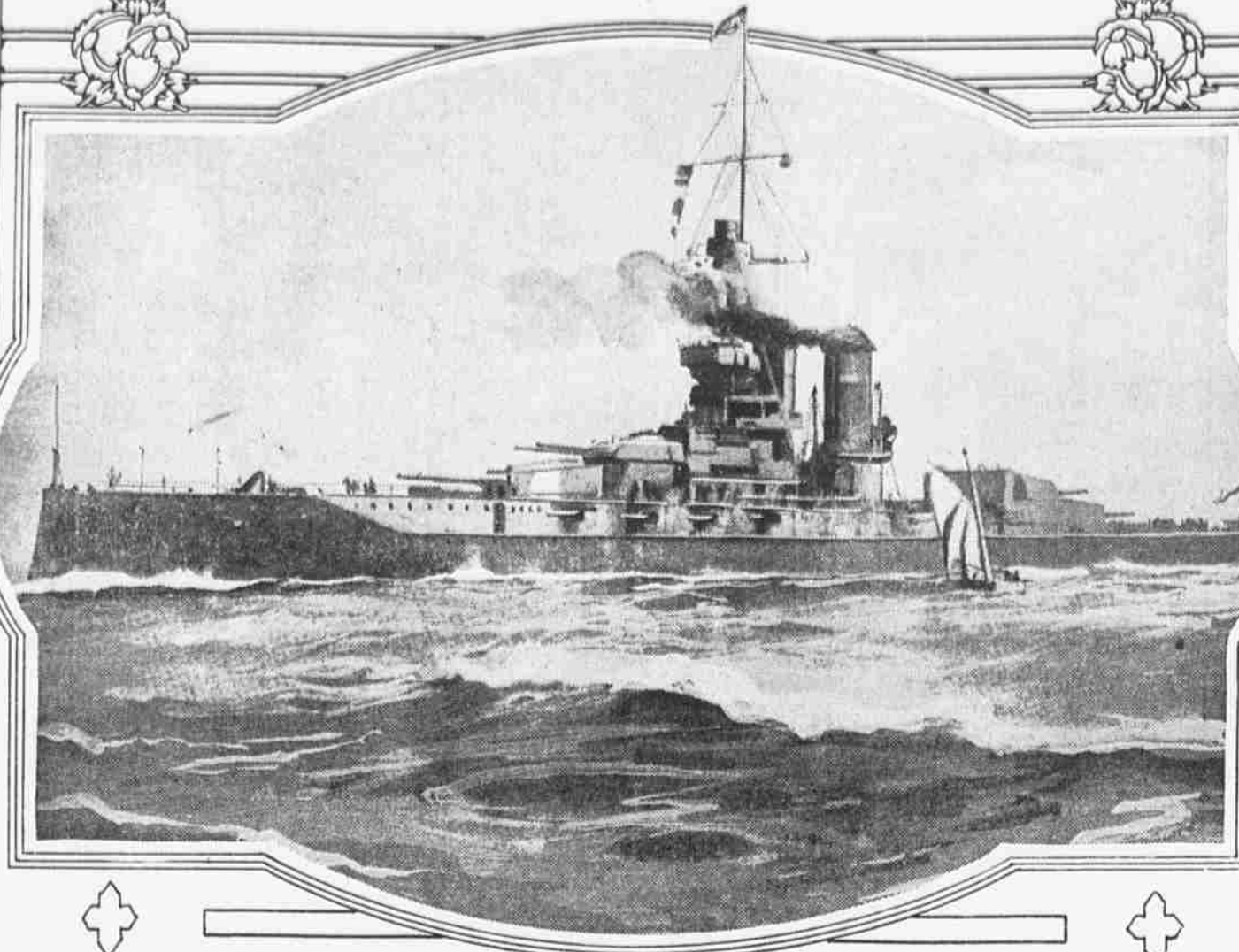


PERSONS AND PLACES PROMINENT IN THE
 WORLD'S NEWS OF A DAY



SHE WAS A BRIDE FOR A DAY

Mrs. Madge-Major Jackins, of this city, a dancer, eloped with Paul R. Jackins, of Baltimore, on February 8 and left him after dinner the same day. She only married him to spite her parents, she said.



MIGHTIEST SEA FIGHTER OF THE BRITISH NAVY

The Queen Elizabeth, the most powerful battleship in the world in service, has shown the remarkable value of its long-range 15-inch guns, which enable the ship to keep out of range of the Turkish guns at the Dardanelles. She has a displacement of 27,500 tons. Her main armament consists of eight 15-inch guns and sixteen 6-inch guns.



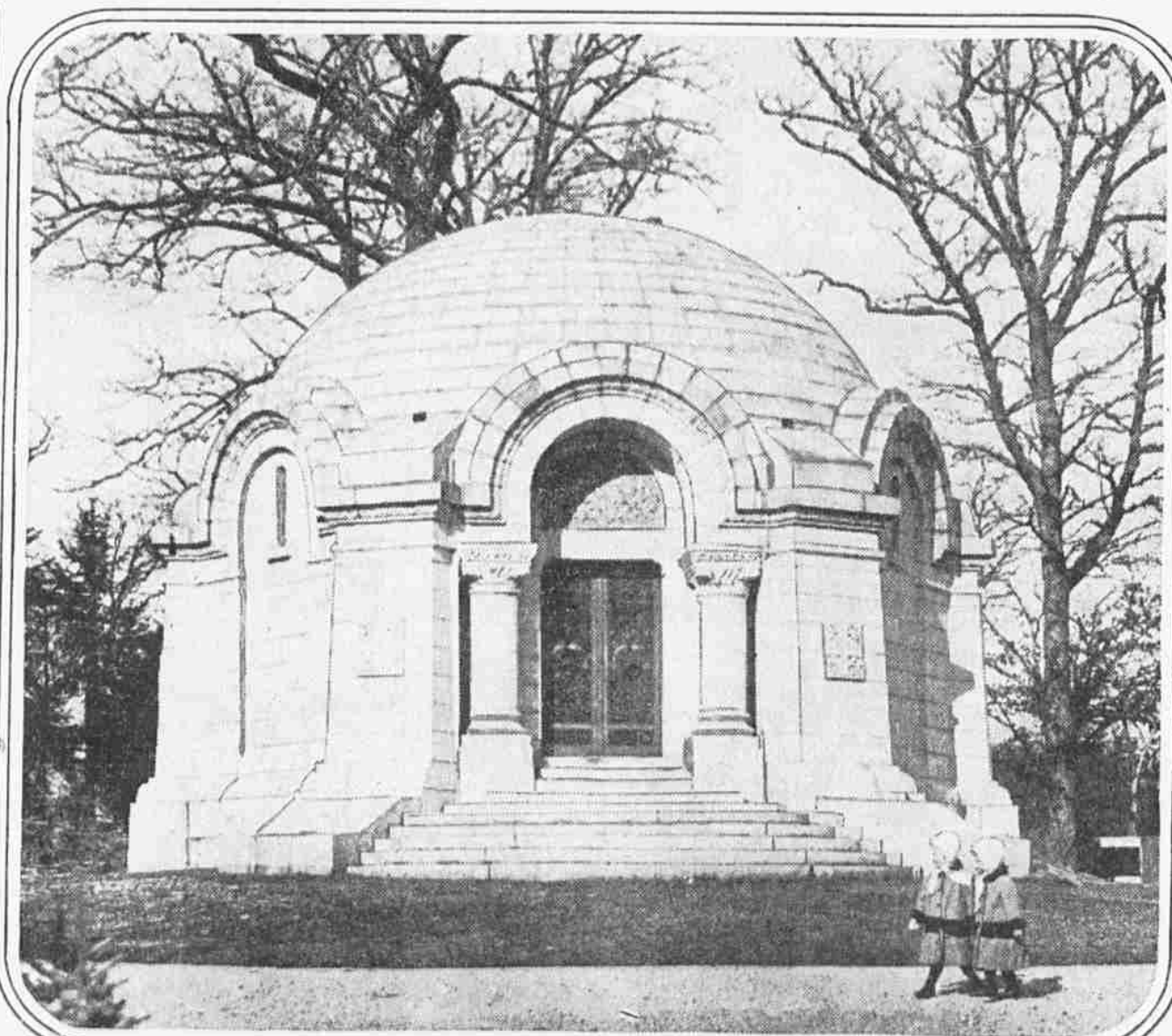
SAVING SOUVENIRS FROM TABERNACLE

An EVENING LEDGER photographer arrived at the deserted tabernacle in time to catch a souvenir hunter stealthily cutting away the last available bit of the canvas which covered the rostrum from which the devil was daily chased.



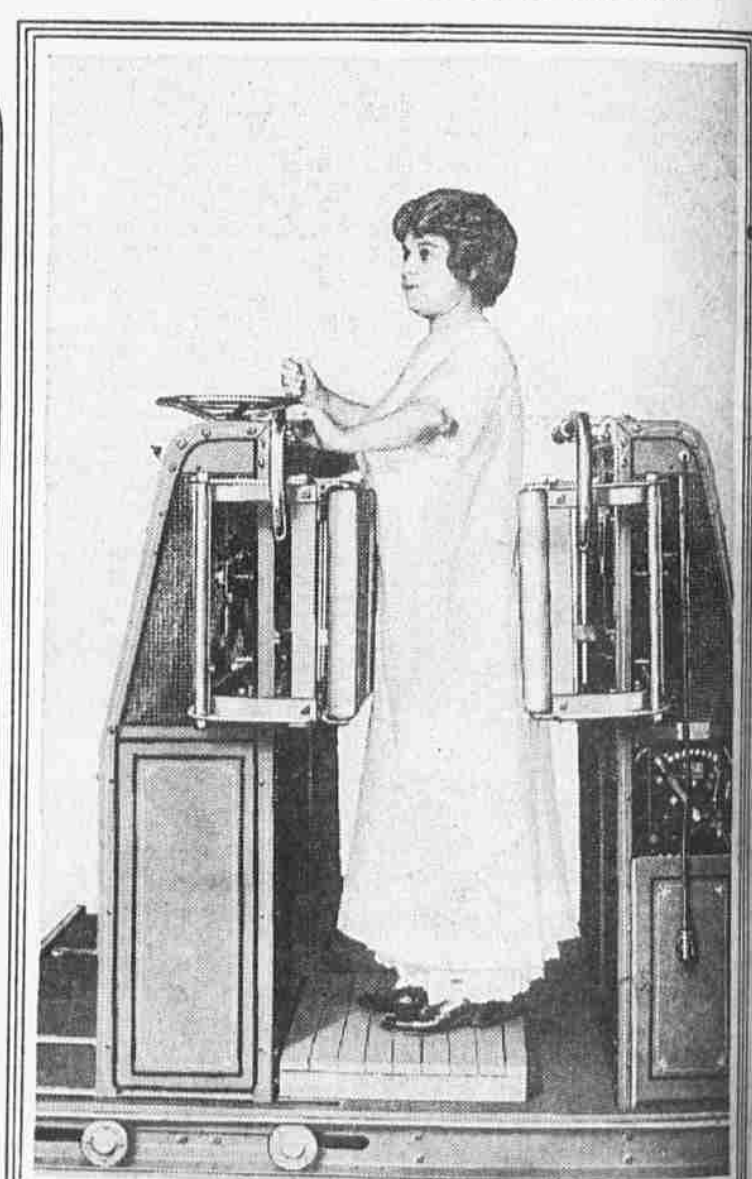
SHE'S CHINESE AND PRETTY AND PANTALETED

The pantalette gown has reached the Pacific Coast. The first person to wear it in Oregon was Jue Quon Tai, the belle of Portland's Chinatown and daughter of a wealthy Chinese merchant. Miss Jue has stage aspirations.



ROCKEFELLER MAUSOLEUM AT TARRYTOWN, N. Y.

The body of Mrs. John D. Rockefeller has been placed in this costly monument at Pocantico Hills until the family cemetery in Cleveland is made ready.



ROLL YOUR AVOIRDUPOIS AWAY

This machine is receiving a test in one of the city's prominent gymnasiums and is called a success. The combination of vise and roller is declared to be most efficacious.



ALL THAT IS LEFT OF THE GALLANT BELGIAN LANCERS' REGIMENT

This picture was recently received from a point near Ypres, where the Belgians are still clinging to a narrow strip of their native soil. Only 14 men remain out of the 800 who originally composed the crack cavalry regiment of the little kingdom, which has always boasted of its expert horsemen.

Photo by Eastman Kodak Company.